

AZ Displays, Inc.

1. MECHANICAL DATA

(1) Product No.	AGM3224E
(2) Module Size	141.9 (W)mm x 117.0 (H)mm x MAX 14.0 (D)mm (CCFT B.L.)
(3) Dot Size	0.27 (W)mm x 0.27 (H)mm
(4) Dot Pitch	0.30 (W)mm x 0.30 (H)mm
(5) Number of Dots	320 (W) x 240 (H)Dots
(6) Duty	1/240
(7) LCD Display Mode	STN: <input type="checkbox"/> Gray Mode <input type="checkbox"/> Yellow Mode <input type="checkbox"/> Blue Mode FSTN: <input type="checkbox"/> Black and White(Normal White/Positive Image) <input type="checkbox"/> Black and White(Normal Black/Negative Image) Rear Polarizer: <input type="checkbox"/> Reflective <input type="checkbox"/> Transflective <input type="checkbox"/> Transmissive <input type="checkbox"/> Transflective(High Transmissive)
(8) Viewing Direction	<input type="checkbox"/> 6 O'clock <input type="checkbox"/> 12 O'clock <input type="checkbox"/> ____O'clock
(9) Backlight	<input type="checkbox"/> W/O <input type="checkbox"/> LED <input type="checkbox"/> EL <input type="checkbox"/> CCFT
(10) Weight	210 g (approx.)

AZ Displays, Inc.

2. ABSOLUTE MAXIMUM RATINGS

(1) ELECTRICAL ABSOLUTE RATINGS

VSS=0V STANDARD

ITEM	SYMBOL	MIN	MAX	UNIT	COMMENT
Power Supply for Logic	VDD-VSS	-0.3	7.0	V	
Power Supply for LCD Drive	VDD-V0	0	26.0	V	
Input Voltage	VI	-0.3	VDD	V	
CCFL Driving Voltage	VFL	0	500	Vrms	
CCFL Input Current	IFL	-	7.0	mArms	
Static Electricity	-	-	-	-	Note 1

Note 1 LCM should be grounded during handling

(2) ENVIRONMENTAL ABSOLUTE MAXIMUM RATINGS

ITEM	NORMAL TEMP.			
	OPERATING		STORAGE	
	MIN.	MAX.	MIN.	MAX.
Ambient Temperature	-10	60	-20	70
Humidity(Without Condensation)	Note 1,3		Note 2,3	

Note 1 $T_a \leq 60^\circ\text{C}$: 85%RH max

$T_a > 60^\circ\text{C}$: Absolute humidity must be lower

than the humidity of 85%RH at 60°C

Note 2 T_a at -20°C will be $< 48\text{hrs}$, at 70°C will be $< 120\text{hrs}$

Note 3 Background color changes slightly depending on ambient temperature.

This phenomenon is reversible.

AZ Displays, Inc.

3. ELECTRICAL CHARACTERISTICS

(VDD = 5V±5%)

ITEM		SYMBOL	CONDITION	MIN.	TYP.	MAX.	UNIT	
Power Supply for Logic		VDD-VSS	-	4.75	5.0	5.25	V	
Recommended Operating Voltage for LCD		VDD-VO	Duty=1/240 Bias=1/13	-10°C	-	23.6	24.2	V
				25°C	20.9	21.9	22.6	
				60°C	18.0	18.5	-	
Input Voltage		V _{IH}	H level	0.8VDD	-	VDD	V	
		V _{IL}	L level	0	-	0.2VDD	V	
Power Supply Current		I _{DD}	FLM = 70 Hz VDD = 5.0 V VEE = -27.0 V VDD-VO = 21.9 V	-	7.5	-	mA	
		I _{EE}	PATTERN : <div style="display: flex; justify-content: space-around; font-family: monospace;"> □■□■□■ </div> <div style="display: flex; justify-content: space-around; font-family: monospace;"> ■□■□■□ </div>	-	5.8	-	mA	
CCFL LAMP	Open Voltage	V _{Open}	Lamp Current = 5 mArms Frequency = 35 KHz	-	420	-	V _{rms}	
	Lamp Voltage	V _L		-	234	-	V _{rms}	
	Brightness	B		-	23000	-	cd/m ²	
	Color Degree	X		-	0.34	-	-	
		Y		-	0.367	-		

AZ Displays, Inc.

4. OPTICAL CHARACTERISTICS

AT V_{OP}

MODE \ ITEM		Cr(Contrast Ratio)		θ (Viewing Angle)		ϕ (Viewing Angle)	
		25°C		25°C, Cr \geq 2		25°C, Cr \geq 2	
		MIN.	TYP.	MIN.	TYP.	MIN.	TYP.
S	A	—	—	—	—	—	—
	C	—	—	—	—	—	—
	J	3	5	25	45	20	30
T	E,F	3	4	30	60	20	35
	G,H	—	—	—	—	—	—
note		NOTE 5		NOTE 6			

AT $\phi=0^\circ$ $\theta=0^\circ$

ITEM	SYMBOL	CONDITION	MIN.	TYP.	MAX.	UNIT	NOTE
Response Time (rise)	Tr	-10°C	—	1050	2100	ms	NOTE 2
		25°C	—	150	300		
		60°C	—	60	120		
Response Time (fall)	Tf	-10°C	—	1400	2400	ms	NOTE 2
		25°C	—	200	350		
		60°C	—	70	130		

note:

S: TRANSFLECTIVE
 T: TRANSMISSIVE
 A: GRAY
 C: YELLOW
 E,F: BLUE
 G,H: NORMALLY BLACK
 J: NORMALLY WHITE

AZ Displays, Inc.

6. INTERNAL PIN CONNECTION

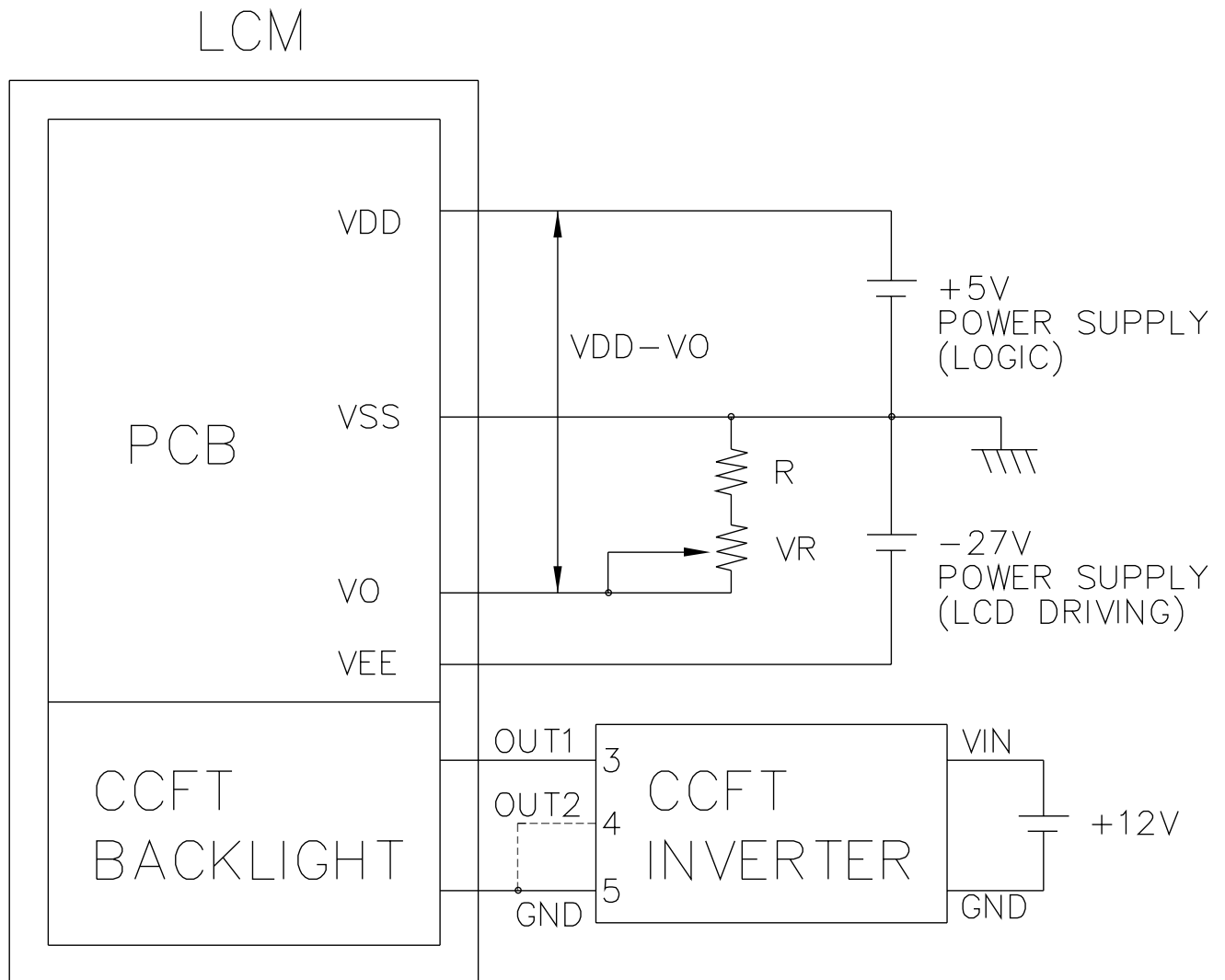
PIN NO.	SYMBOL	LEVEL	FUNCTION
1	VO	-	LCD CONTRAST ADJUST VOLTAGE
2	VEE	-	POWER SUPPLY FOR LCD DRIVING(-27V)
3	D3	H/L	DISPLAY DATA
4	D2		
5	D1		
6	D0		
7	VSS	-	GND FOR LOGIC(0V)
8	VDD	-	POWER SUPPLY FOR LOGIC(+5V)
9	CL2	H→L	DISPLAY DATA FETCH PULSE
10	CL1	H→L	DISPLAY DATA LATCH PULSE
11	FLM	H/L	SCAN START PULSE
12	NC	-	NO CONNECTION
13	NC	-	NO CONNECTION
14	REV	H/L	DISPLAY DATA REVERSE

CCFL CONNECTOR : J.A.E./IL-G-4S-S3C2 OR EQUIVALENT

PIN NO.	SYMBOL	LEVEL	FUNCTION
1	V _{FL}	-	POWER SUPPLY FOR CCFT BACKLIGHT
2	NC	-	-
3	NC	-	-
3	V _{FL}	-	POWER SUPPLY FOR CCFT BACKLIGHT

AZ Displays, Inc.

7. POWER SUPPLY



1. VR: 30K~50K Ω

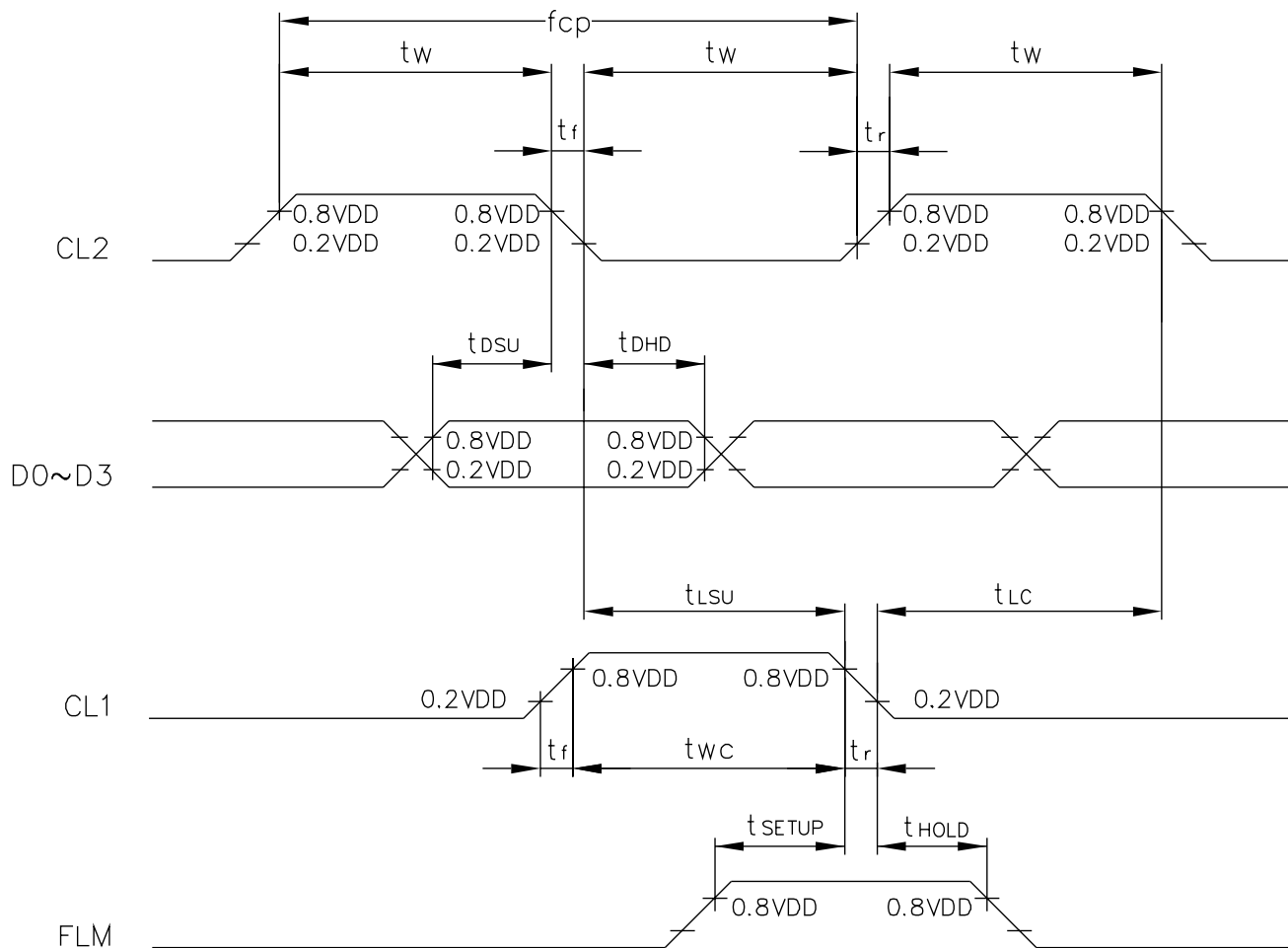
R: 4.3K Ω

2. RECOMMENDED CCFT INVERTER : CXA-L10L(TDK)

AZ Displays, Inc.

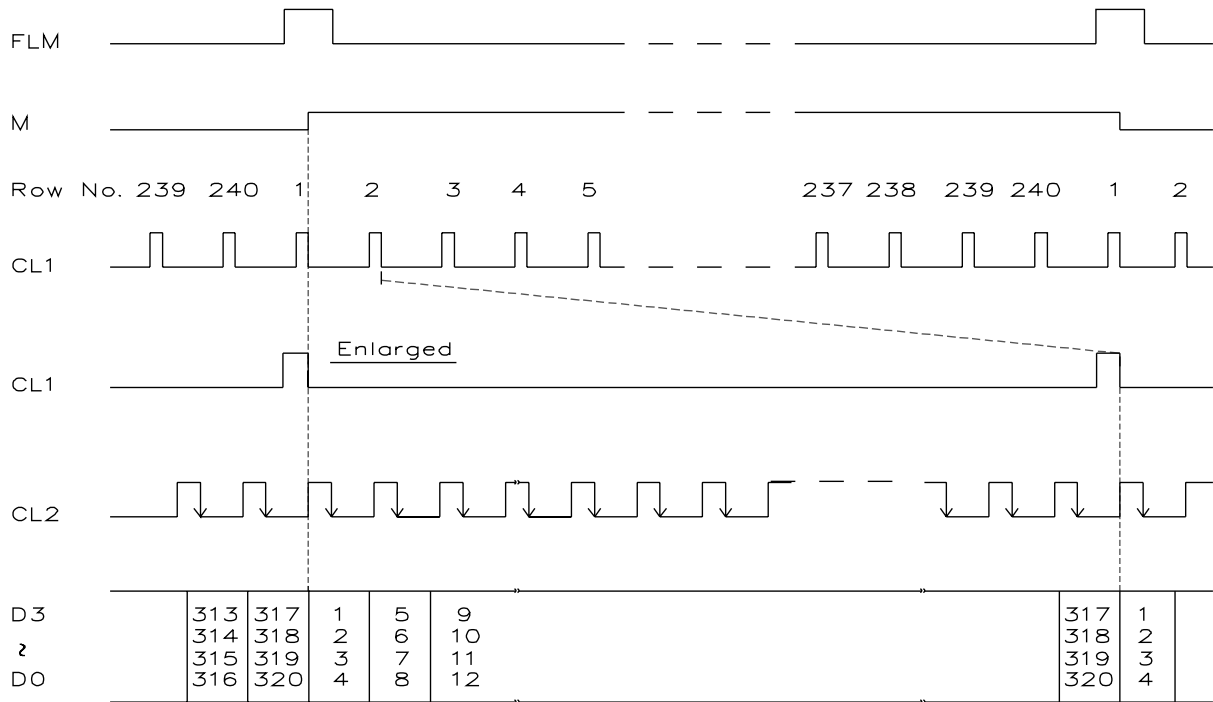
8.1 TIMING CHARACTERISTICS

ITEM	SYMBOL	MIN.	TYP.	MAX.	UNIT
CLOCK FREQUENCY	f_{cp}	—	—	6.5	MHZ
CLOCK PULSE WIDTH	t_w	63	—	—	ns
CLOCK RISE,FALL TIME	t_r, t_f	—	—	20	ns
DATA SET UP TIME	t_{dsu}	50	—	—	ns
DATA HOLD TIME	t_{dhd}	50	—	—	ns
CL1 SET UP TIME	t_{lsu}	80	—	—	ns
CL1 → CLOCK TIME	t_{lc}	80	—	—	ns
"FLM" SET UP TIME	t_{setup}	100	—	—	ns
"FLM" HOLD TIME	t_{hold}	100	—	—	ns
"CL1" PULSE WIDTH	t_{wc}	125	—	—	ns

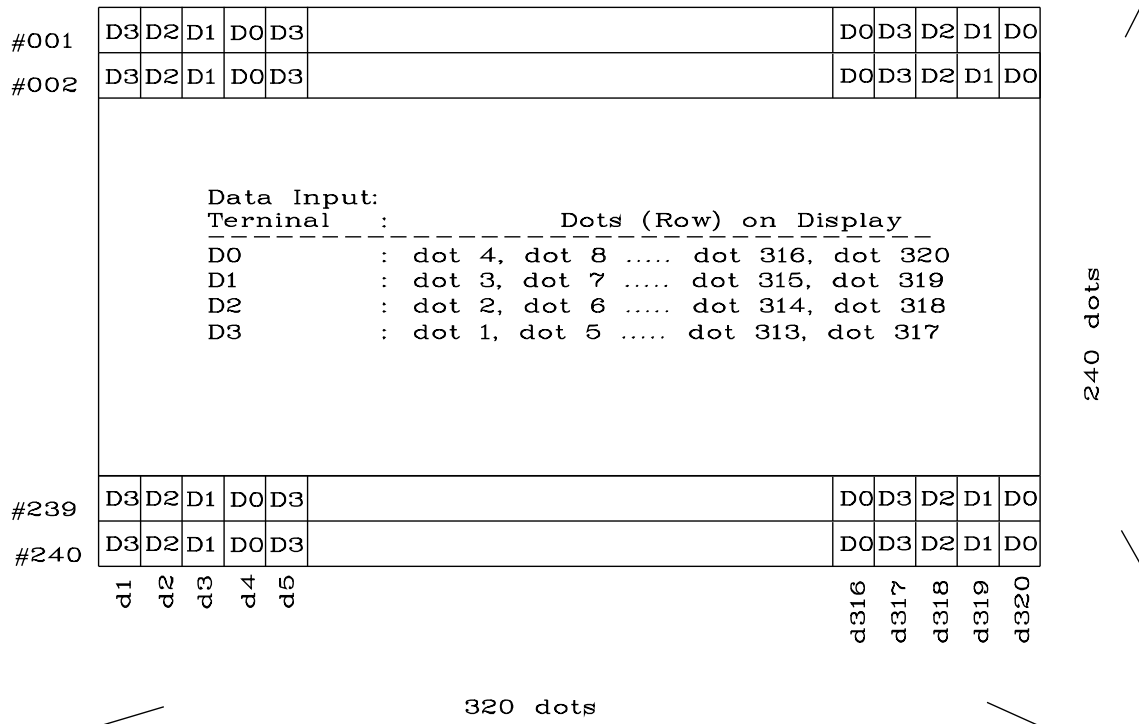


AZ Displays, Inc.

8.2 TIMING CHART OF INPUT SIGNALS

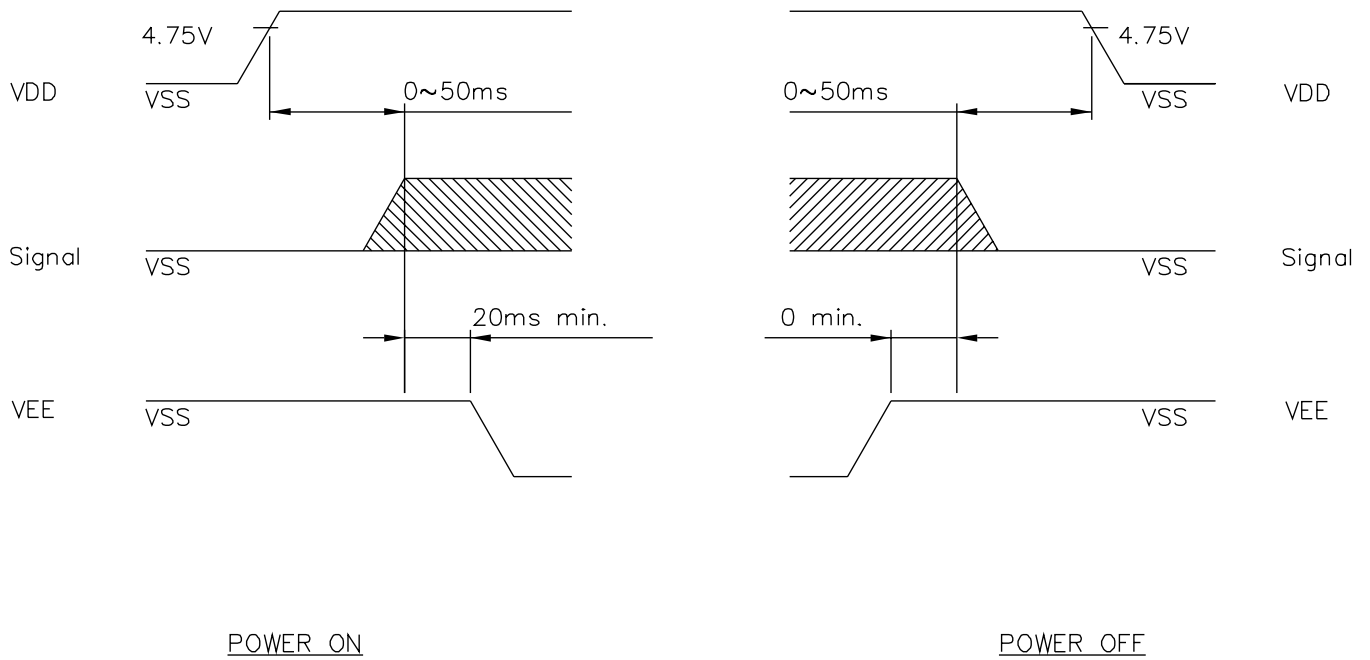


8.3 DISPLAY PATTERN



AZ Displays, Inc.

8.4 POWER ON/OFF TIMING

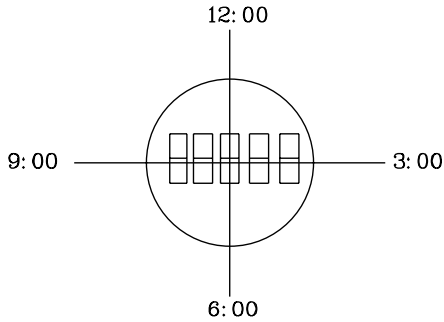


Missing pixels may occur when the LCM is driven beyond above power interface timing sequence.

AZ Displays, Inc.

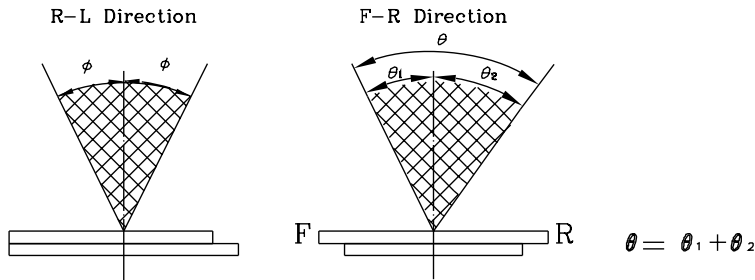
(NOTE 4)

Definition of Viewing Direction



(NOTE 5)

Definition of Viewing Angle

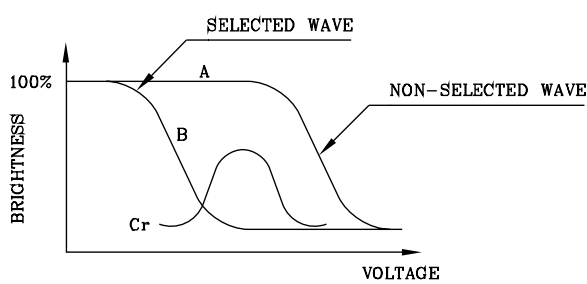


*Conditions

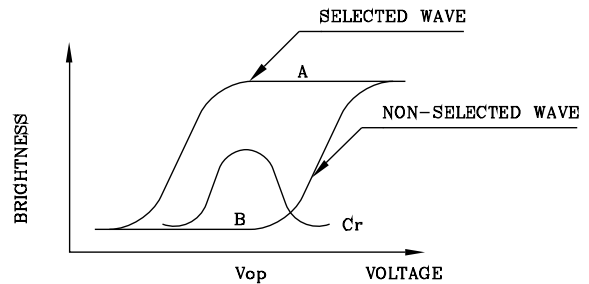
- Operating Voltage : V_{op}
- Frame Frequency : 70Hz
- Applying Waveform : 1/N duty 1/a bias
- Contrast Ratio : larger than 2

(NOTE 6)

Definition of Contrast Ratio (Cr)



(positive type)

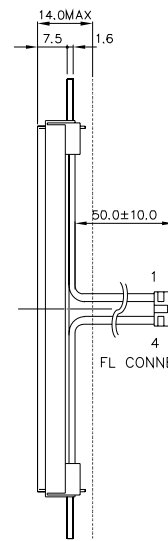
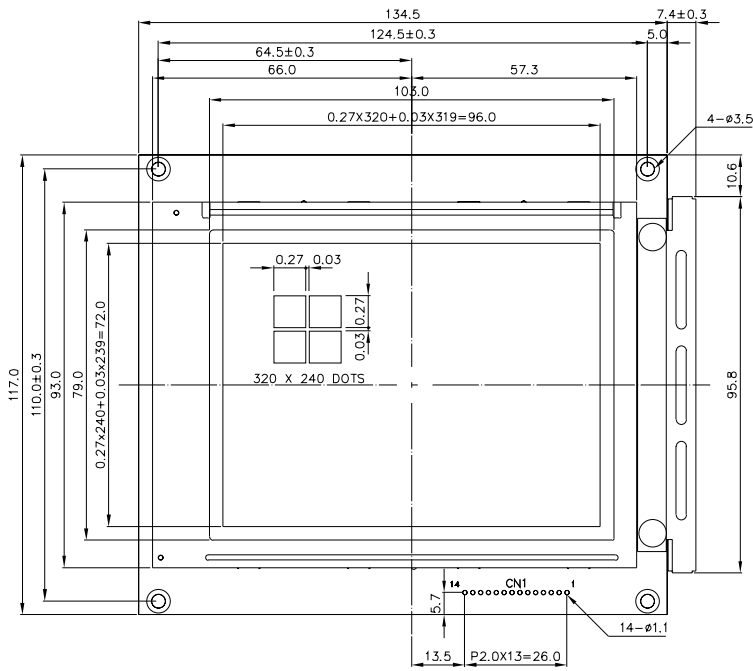


(negative type)

Contrast Ratio : $Cr=A/B$

*Conditions

- Viewing Angle : 0
- Frame Frequency : 70Hz
- Applying Waveform : 1/N duty 1/a bias



FL CONNECTER : J.A.E./IL-G-4S-S3C2



PinNo.	Symbol	Level	Function
1	V0	-	Operating voltage for LCD driving
2	VEE	-	Power supply for LCD driving
3	D3	H/L	Display data 2
4	D2	H/L	Display data 2
5	D1	H/L	Display data 1
6	D0	H/L	Display data 0
7	VSS	-	GND for logic(0V)
8	VDD	-	Power supply for logic(+5V)
9	CL2	H/L	Display data latch pulse
10	CL1	H/L	Display data latch pulse
11	FLM	H/L	Scan start pulse
12	NC	-	No Connection
13	NC	-	No Connection
14	REV	H/L	Display data reverse

NOTES :
 1.RESOLUTION : 320 X 240 Dots
 2.CONTROLLER : WITHOUT
 3.DC/DC : WITHOUT

AGM3224E		AZ DISPLAYS, INC.	
NAME	DATE	TITLE	
APPROVE		DWG-NO	MBAX078X
CHECK		UNIT : mm	SCALE : 1/1
DESIGN		THIRD ANGLE PROJECT	
DRAW	MAY PING	86.03.24	