

**FEATURES**

- Trimmed 0.5% Bandgap Reference
- Nominal Temperature Range Extended to 105°C
- Temperature-Compensated: 30ppm/°C
- Internal Amplifier with 150mA Capability
- Low Output Noise
- Low Frequency Dynamic Output Impedance

**DESCRIPTION**

The CL431 is an adjustable shunt regulator designed to act as an open-loop error amplifier with a 2.5V temperature compensated reference. Its highly accurate 0.5% bandgap reference is perfect for applications requiring stability and accuracy over temperature and life.

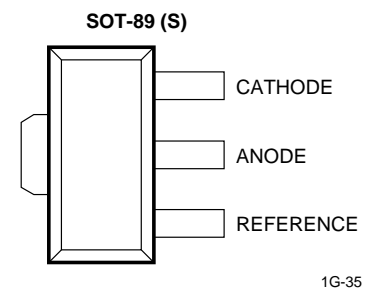
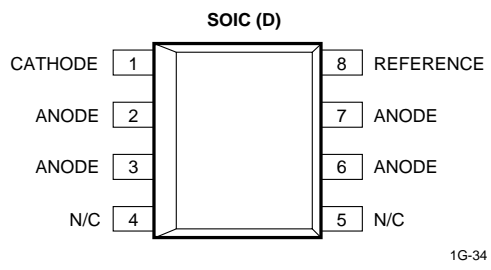
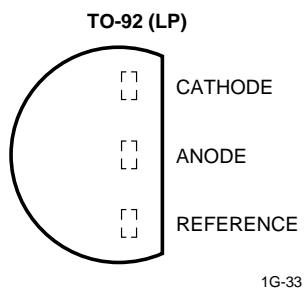
Sharp turn-on characteristics and a low temperature coefficient make the CL431 an excellent replacement for many zener diode applications, programmable to any value greater than 2.5V and up to 36V by using two external resistors. As a combination error amplifier and reference, it can be used to manage control loops such as switching power supplies.

The CL431 can be used as a direct replacement for the standard TL431.

**ORDERING INFORMATION**

Part	Package	Temperature Range
CL431LP	TO-92	0 to 105°C
CL431D	8-Pin Plastic SOIC	0 to 105°C
CL431S	SOT-89	0 to 105°C

**PIN CONFIGURATION (Top View)**



**ABSOLUTE MAXIMUM RATINGS**

SYMBOL	PARAMETER	RATING	UNITS
V <sub>KA</sub>	Cathode-Anode Reverse Breakdown	37	V
I <sub>AK</sub>	Anode-Cathode Forward Current	1	A
I <sub>KA</sub>	Operating Cathode Current	250	mA
I <sub>REF</sub>	Reference Input Current	10	mA
P <sub>D</sub>	Continuous Power at 25°C TO-92 8L SOIC SOT-89	775 750 1000	mW mW mW
T <sub>J</sub>	Junction Temperature	150	°C
T <sub>STG</sub>	Storage Temperature	-65 to 150	°C
T <sub>L</sub>	Lead Temperature, Soldering 10 Seconds	300	°C

Exceeding ABSOLUTE MAXIMUM RATINGS may cause permanent damage. Extended operation of the device at these or any other conditions above those indicated in the operational sections of this specification is not recommended as it may adversely affect reliability and performance.

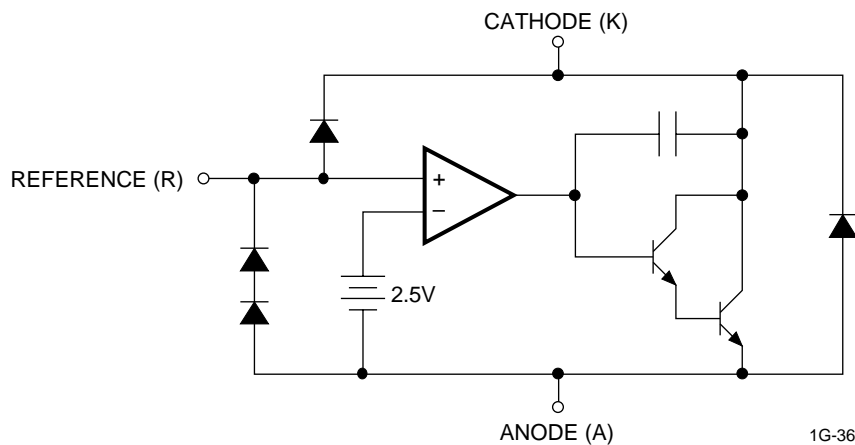
**RECOMMENDED CONDITIONS**

SYMBOL	PARAMETER	RATING	UNIT
V <sub>KA</sub>	Cathode Voltage	V <sub>REF</sub> to 20	V
I <sub>K</sub>	Cathode Current	10	mA

**TYPICAL THERMAL RESISTANCE**

PACKAGE	θ <sub>JA</sub>	θ <sub>JC</sub>	TYPICAL DERATING
TO-92	160°C/W	80°C/W	6.3mW/°C
SOIC	175°C/W	45°C/W	5.7mW/°C
SOT-89	110°C/W	8°C/W	9.1mW/°C

**FUNCTIONAL BLOCK DIAGRAM**

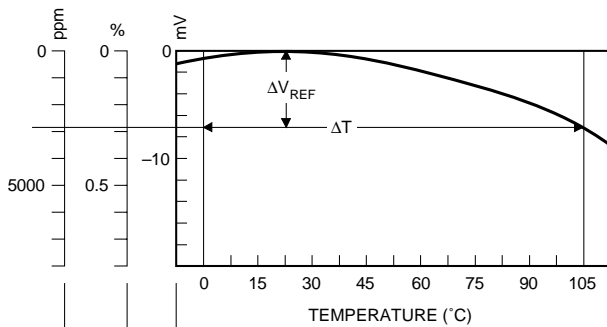


**ELECTRICAL CHARACTERISTICS**

Electrical Characteristics are guaranteed over full junction temperature range (0 to 105°C). Ambient temperature must be derated based on power dissipation and package thermal characteristics. The conditions are:  $V_{KA} = V_{REF}$  and  $I_K = 10mA$  unless otherwise stated.

SYMBOL	PARAMETER	CL431 (0.5%)			UNIT	TEST CIRCUIT	TEST CONDITION
		MIN	TYP	MAX			
$V_{REF}$	Reference Voltage	2.490	2.503	2.515	V	1	$T_A = 25^\circ C$
		2.469		2.536	V	1	Over Temp.
TC	$\Delta V_{REF}$ with Temp.*		0.07	0.20	mV/°C	1	
$\frac{\Delta V_{REF}}{\Delta V_K}$	Ratio of Change in $V_{REF}$ to Cathode Voltage	-2.7	-1.0		mV/V	2	$V_{REF}$ to 10V
		-2	-0.4	0.3			10V to 36V
$I_{REF}$	Reference Input Current		0.7	4	$\mu A$	2	
$\Delta I_{REF}$	$I_{REF}$ Temp Deviation		0.4	1.2	$\mu A$	2	Over Temp.
$I_{K(MIN)}$	Min $I_K$ for Regulation		0.4	1	mA	1	
$I_{K(OFF)}$	Off State Leakage		0.04	250	nA	3	$V_{REF} = 0V, V_{KA} = 36V$
$Z_{KA}$	Dynamic Output Impedance		0.15	0.5	$\Omega$	1	$f \leq 1kHz, I_K = 1$ to 150mA

**\*CALCULATING AVERAGE TEMPERATURE COEFFICIENT (TC)**



• TC in mV/°C =  $\frac{\Delta V_{REF} (mV)}{\Delta T_A}$

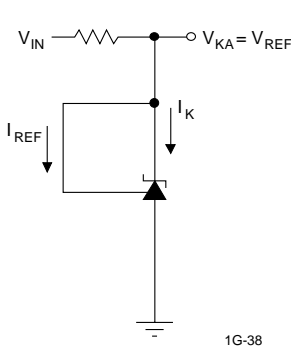
• TC in %/°C =  $\frac{\left(\frac{\Delta V_{REF}}{V_{REF \text{ at } 25^\circ C}}\right) \times 100}{\Delta T_A}$

• TC in ppm/°C =  $\frac{\left(\frac{\Delta V_{REF}}{V_{REF \text{ at } 25^\circ C}}\right) \times 10^6}{\Delta T_A}$

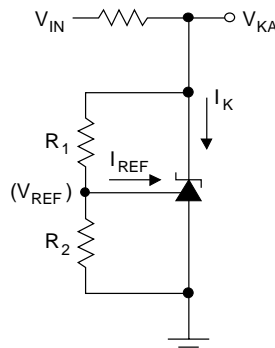
→ 0.07 mV/°C  
→ 0.003 %/°C  
→ 27 ppm/°C

1G-37

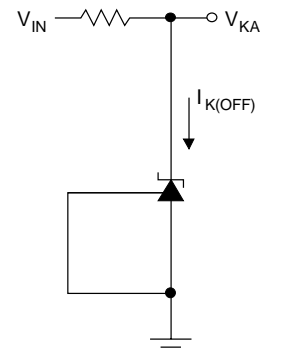
**TEST CIRCUITS**



**TEST CIRCUIT 1**



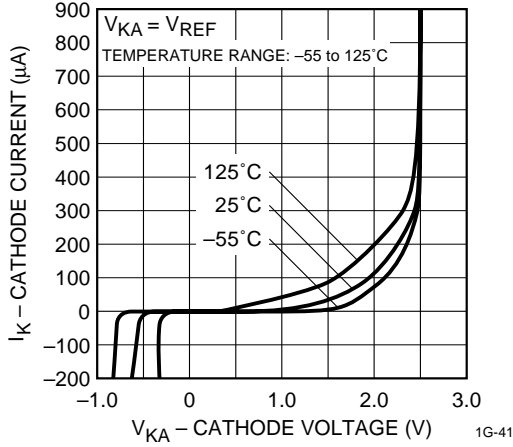
**TEST CIRCUIT 2**



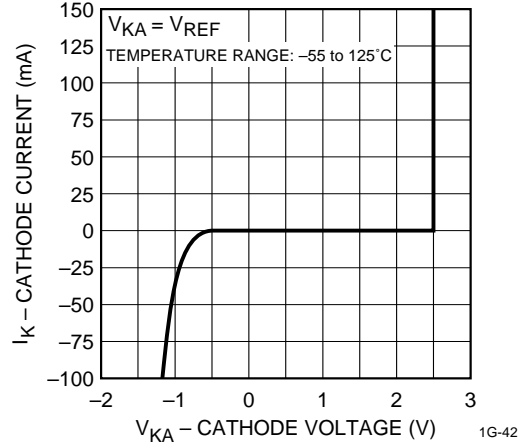
**TEST CIRCUIT 3**

TYPICAL PERFORMANCE CURVES

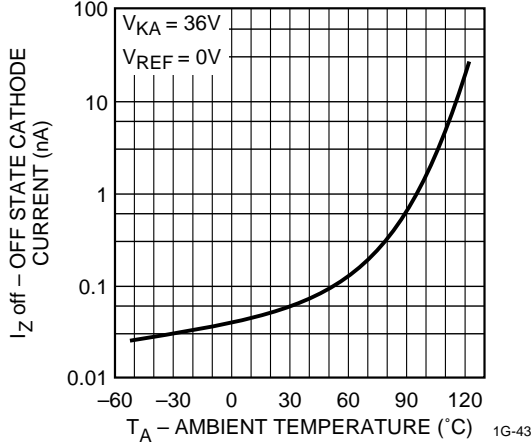
LOW CURRENT OPERATING CHARACTERISTICS



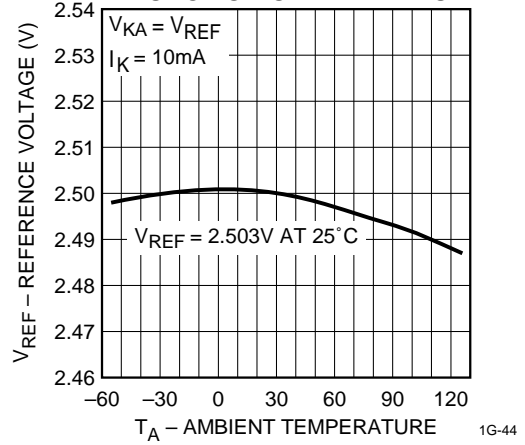
HIGH CURRENT OPERATING CHARACTERISTICS



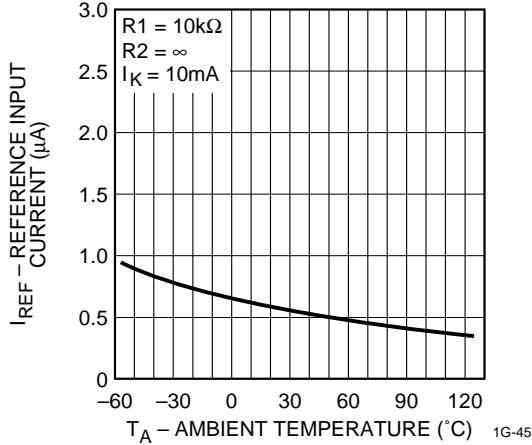
OFF STATE LEAKAGE



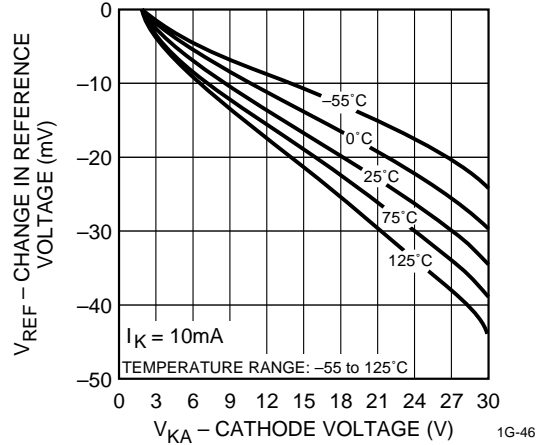
TEMPERATURE COEFFICIENT AS A FUNCTION OF TRIM VALUE



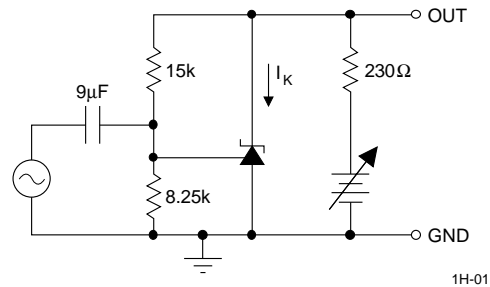
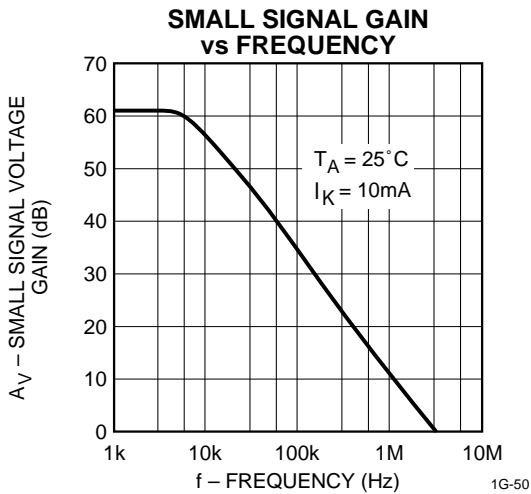
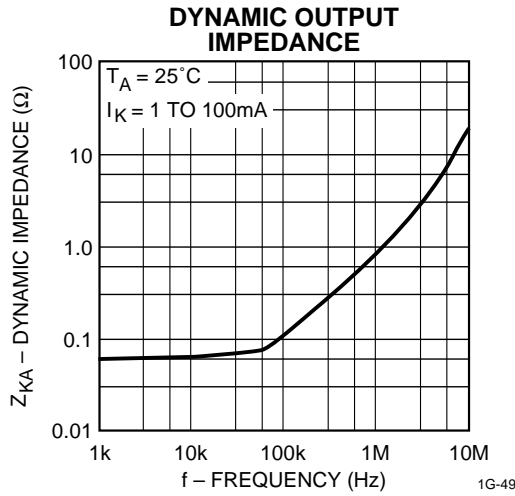
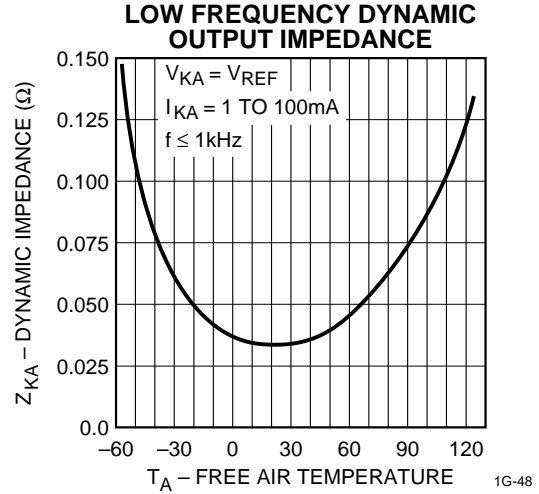
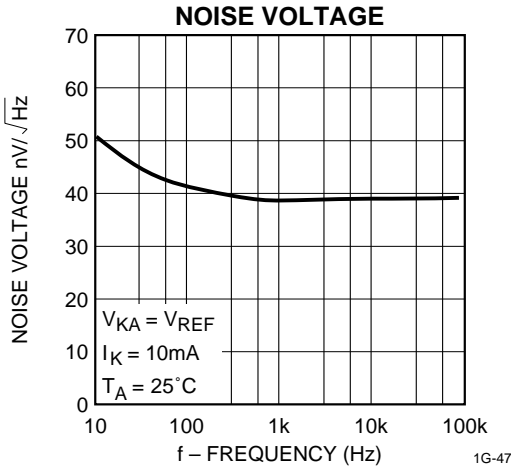
REFERENCE INPUT CURRENT



REFERENCE VOLTAGE LINE REGULATION



TYPICAL PERFORMANCE CURVES (continued)



TYPICAL PERFORMANCE CURVES (continued)

