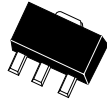


BCX54
BCX55
BCX56

**SURFACE MOUNT
NPN SILICON TRANSISTOR**



SOT-89 CASE

CentralTM
Semiconductor Corp.

DESCRIPTION:

The CENTRAL SEMICONDUCTOR BCX54, BCX55, and BCX56 types are NPN Silicon Transistors manufactured by the epitaxial planar process, epoxy molded in a surface mount package, designed for high current general purpose amplifier applications.

MAXIMUM RATINGS ($T_A=25^\circ\text{C}$)

		<u>BCX54</u>	<u>BCX55</u>	<u>BCX56</u>	<u>UNITS</u>
Collector-Base Voltage	V_{CB0}	45	60	100	V
Collector-Emitter Voltage	V_{CEO}	45	60	80	V
Emitter-Base Voltage	V_{EBO}		5.0		V
Collector Current	I_C		1.0		A
Peak Collector Current	I_{CM}		1.5		A
Base Current	I_B		100		mA
Peak Base Current	I_{BM}		200		mA
Power Dissipation	P_D		1.2		W
Operating and Storage					
Junction Temperature	T_J, T_{stg}		-65 to +150		$^\circ\text{C}$
Thermal Resistance	Θ_{JA}		104		$^\circ\text{C/W}$

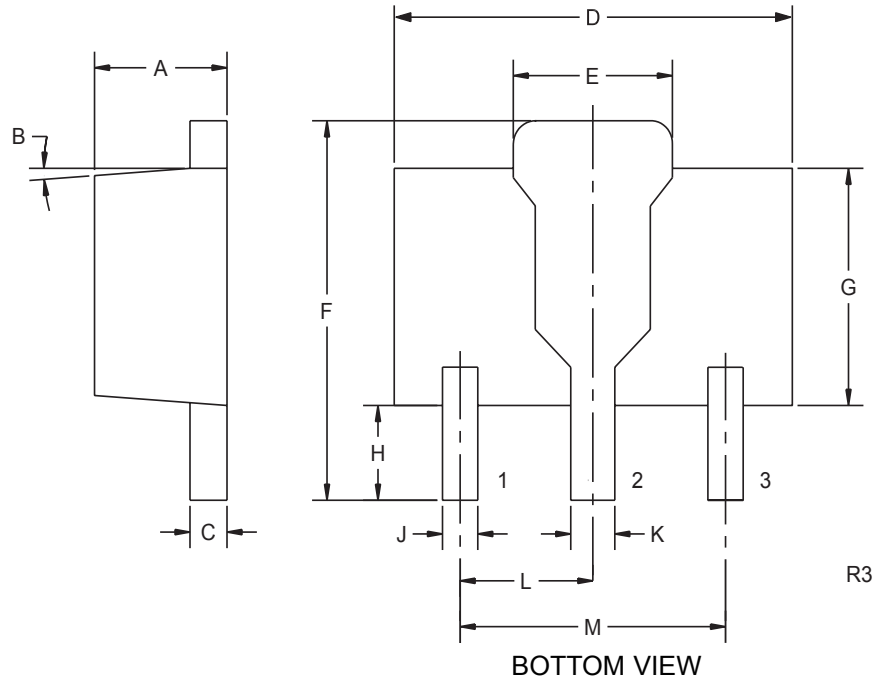
ELECTRICAL CHARACTERISTICS: ($T_A=25^\circ\text{C}$ unless otherwise noted)

<u>SYMBOL</u>	<u>TEST CONDITIONS</u>	<u>MIN</u>	<u>TYP</u>	<u>MAX</u>	<u>UNITS</u>
I_{CBO}	$V_{CB}=30\text{V}$			100	nA
I_{CBO}	$V_{CB}=30\text{V}, T_A=125^\circ\text{C}$			10	μA
I_{EBO}	$V_{EB}=5.0\text{V}$			100	nA
BV_{CBO}	$I_C=100\mu\text{A}$ (BCX54)	45			V
BV_{CBO}	$I_C=100\mu\text{A}$ (BCX55)	60			V
BV_{CBO}	$I_C=100\mu\text{A}$ (BCX56)	100			V
BV_{CEO}	$I_C=10\text{mA}$ (BCX54)	45			V
BV_{CEO}	$I_C=10\text{mA}$ (BCX55)	60			V
BV_{CEO}	$I_C=10\text{mA}$ (BCX56)	80			V
$V_{CE(SAT)}$	$I_C=500\text{mA}, I_B=50\text{mA}$			0.5	V
$V_{BE(ON)}$	$V_{CE}=2.0\text{V}, I_B=500\text{mA}$			1.0	V
h_{FE}	$V_{CE}=2.0\text{V}, I_C=5.0\text{mA}$	63			
h_{FE}	$V_{CE}=2.0\text{V}, I_C=150\text{mA}$	63		250	
h_{FE}	$V_{CE}=2.0\text{V}, I_C=150\text{mA}$ (BCX54-10, BCX55-10, BCX56-10)	63		160	
h_{FE}	$V_{CE}=2.0\text{V}, I_C=150\text{mA}$ (BCX54-16, BCX55-16, BCX56-16)	100		250	
h_{FE}	$V_{CE}=2.0\text{V}, I_C=500\text{mA}$	40			
f_T	$V_{CE}=5.0\text{V}, I_C=10\text{mA}, f=100\text{MHz}$		130		MHz

R1 (18-December 2001)

**SURFACE MOUNT
NPN SILICON TRANSISTOR**

SOT-89 CASE - MECHANICAL OUTLINE



LEAD CODE:

- 1) EMITTER
- 2) COLLECTOR
- 3) BASE

MARKING CODE:

- | | |
|----------|----|
| BCX54 | BA |
| BCX54-10 | BC |
| BCX54-16 | BD |
| BCX55 | BE |
| BCX55-10 | BG |
| BCX55-16 | BM |
| BCX56 | BH |
| BCX56-10 | BK |
| BCX56-16 | BL |

SYMBOL	DIMENSIONS			
	INCHES		MILLIMETERS	
	MIN	MAX	MIN	MAX
A	0.055	0.067	1.40	1.70
B	4°		4°	
C	0.016	0.018	0.40	0.46
D	0.173	0.185	4.40	4.70
E	0.070	0.074	1.79	1.87
F	0.146	0.177	3.70	4.50
G	0.094	0.106	2.40	2.70
H	0.028	0.051	0.70	1.30
J	0.015	0.019	0.38	0.48
K	0.019	0.023	0.48	0.58
L	0.059		1.50	
M	0.118		3.00	

SOT-89 (REV: R3)

R1 (18-December 2001)