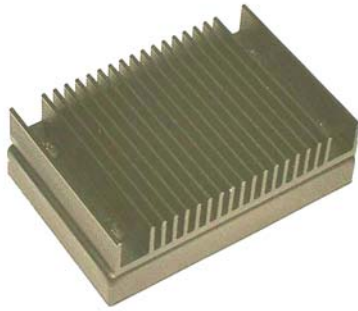


TDD40 SERIES

DC-DC CONVERTER 33 ~ 42W



TDD40 - 03 S 2

WATTAGE

03 : 3.3V OUT
05 : 5V OUT
12 : 12V OUT
15 : 15V OUT

2: 18~60V IN
3: 35~75V IN

S : SINGLE OUTPUT
D : DUAL OUTPUT

MODEL LIST

MODEL NO.	INPUT VOLTAGE	OUTPUT WATTAGE	OUTPUT VOLTAGE	OUTPUT CURRENT	EFF. (MIN.)	CASE
Single Output Models						
TDD40 - 03S2	18~60 VDC	33 WATTS	+3.3 VDC	10000 mA	76%	TC
TDD40 - 05S2	18~60 VDC	40 WATTS	+ 5 VDC	8000 mA	82%	TC
TDD40 - 12S2	18~60 VDC	42 WATTS	+ 12 VDC	3500 mA	85%	TC
TDD40 - 15S2	18~60 VDC	42 WATTS	+ 15 VDC	2800 mA	85%	TC
TDD40 - 03S3	35~75 VDC	33 WATTS	+3.3 VDC	10000 mA	76%	TC
TDD40 - 05S3	35~75 VDC	40 WATTS	+ 5 VDC	8000 mA	82%	TC
TDD40 - 12S3	35~75 VDC	42 WATTS	+ 12 VDC	3500 mA	85%	TC
TDD40 - 15S3	35~75 VDC	42 WATTS	+ 15 VDC	2800 mA	85%	TC
Dual Output Models						
TDD40 - 12D2	18~60 VDC	40 WATTS	± 12 VDC	±1700 mA	84%	TC
TDD40 - 15D2	18~60 VDC	42 WATTS	± 15 VDC	±1400 mA	84%	TC
TDD40 - 12D3	35~75 VDC	40 WATTS	± 12 VDC	±1700 mA	84%	TC
TDD40 - 15D3	35~75 VDC	42 WATTS	± 15 VDC	±1400 mA	84%	TC

FEATURES

- * LOW COST
- * 2:1 AND 3:1 WIDE INPUT RANGE
- * I/O ISOLATION
- * INPUT Pi FILTER
- * SHORT CIRCUIT PROTECTION
- * HIGH PERFORMANCE
- * 2 YEARS WARRANTY

DESCRIPTION

THE TDD40 SERIES ARE 40WATTS SINGLE & DUAL OUTPUT DC/DC CONVERTER, 3:1 WIDE INPUT RANGE, I/O ISOLATION, GOOD EFFICIENCY WITH EXCELLENT LINE/LOAD REGULATION WITH SHORT CIRCUIT PROTECT FEATURES. IT MAKES TDD40 SUITABLE TO POWER COMMERCIAL & INDUSTRIAL TYPES OF ELECTRONIC CIRCUITS AT VERY LOW COST. ALL TDD40 MODELS ARE PACKAGED IN 3" x 2" x 0.95" HEIGHT OF HEATSINK TO BE ADVISED BLACK COATED METAL CASE WITH NON-CONDUCTIVE PLASTIC BASE PLATE CONFIGURATION, AND PCB MOUNTABLE DIRECTLY.



CHINFA ELECTRONICS IND., CO. LTD.
ISO 9001 Certified

www.chinfa.com
sales@chinfa.com

SPECIFICATION

All Specifications Typical At Nominal Line, Full Load, 25°C Unless Otherwise Noticed

GENERAL SPECIFICATION

- * Switching frequency: >200KHz
- * Isolation voltage: 1,500VDC
- * Isolation resistance: 100M Ω (min.)
- * Operating ambient temperature: -25 to +71°C
- * Storage temperature: -40 to +100°C
- * Max. Case temperature: 100°C
- * M.T.B.F.: 218,000Hrs at @ GF40, according to MIL-HDBK-217F
- * Cooling: Free air convection
- * Transient recovery time: 500 μ S, 25% load step change
- * Temperature coefficient: $\pm 0.02\%$ / °C
- * Dimension: 76.2 x 50.8 x 24mm

INPUT SPECIFICATIONS

- * Input voltage range / frequency: 18 ~ 60VDC for 24V
35 ~ 75VDC for 48V
- * Input filter: Pi filter

OUTPUT SPECIFICATIONS

- * Output voltage accuracy: $\pm 2\%$ at Vo_nom
- * Minimum load: No load for single output models
 $\pm 6\%$ at Vo_nom for dual output models
- * Line regulation: $\pm 1\%$ at Vo_nom
- * Load regulation: $\pm 2\%$ (NL ~ FL) at Vo_nom for single output models
 $\pm 5\%$ (20% ~ FL) at Vo_nom for dual output models
- * Ripple & noise: Vout x $\pm 1\%$ mVp-p (max.)
- * Efficiency: Up to 85%, see model list
- * Voltage trim range: $\pm 10\%$ at Vo_nom
 $\pm 5\%$ for 3.3V_out
- * Derating: 51°C
- * Case material: Metal

CONTROL AND PROTECTION

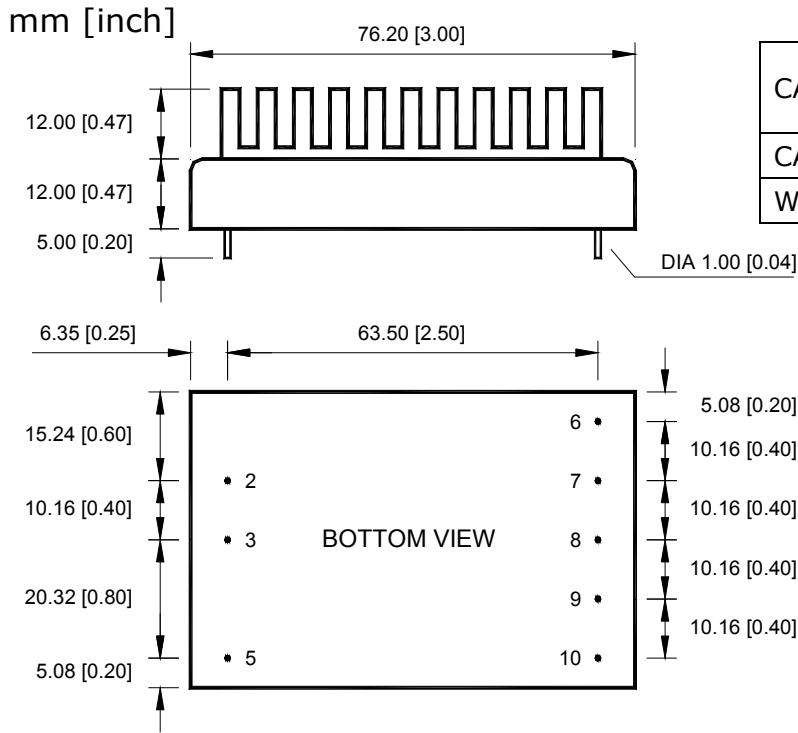
- * Remote on/off: ON : open or 8 ~ 10VDC
OFF : -0.3 ~ 2VDC
- * Output short circuit: Continuous



TDD40 SERIES

DC-DC CONVERTER 33 ~ 42W

MECHANISM & PIN CONFIGURATION



PHYSICAL CHARACTERISTICS

CASE SIZE	76.2 x 50.8 x 24mm 3 x 2 x 0.94inches
CASE MATERIAL	Metal
WEIGHT	175 g

PIN ASSIGNMENT

PIN NO.	2	3	5	6	7	8	9	10
SINGLE	Vi-	Vi+	ON/OFF	N.C.	N.C.	Vo-	Vo+	Trim
DUAL	Vi-	Vi+	ON/OFF	Vo-	N.C.	com	Vo+	Trim

Derating:

[TABLE 1]

