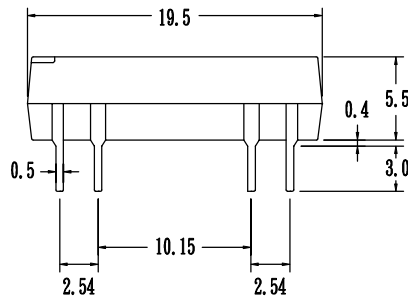
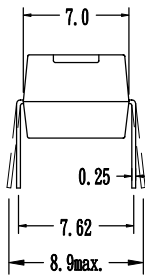
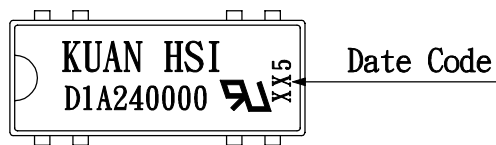


PRODUCT SPECIFICATION

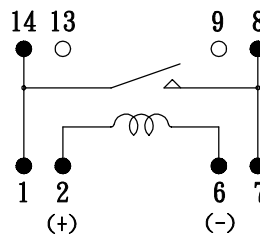
COSMO ELECTRONICS CORPORATION	REED RELAY: D1A240000	SHEET 1 OF 2
---	---------------------------------	--------------

1. OUTSIDE DIMENSION : UNIT (mm)



TOLERANCE : $\pm 0.1\text{mm}$

2. SCHEMATIC : TOP VIEW



PRODUCT SPECIFICATION

COSMO ELECTRONICS CORPORATION	REED RELAY: D1A240000	SHEET 2 OF 2
---	---------------------------------	--------------

3.0 COIL RATINGS: (AT 20°C)

3.1 Coil resistance	2150	Ω ($\pm 10\%$)
3.2 Nominal coil current	24	VDC
3.3 Maximum Continuous voltage	28	VDC
3.4 Must operate	18	VDC
3.5 Must release	2.4	VDC
3.6 Rated current	11.1	mA

4.0 ELECTRONICAL CHARACTERISTICS:

4.1 Contact resistance	100	m Ω (max)
4.2 Operate time	0.5	ms (max)
4.3 Bounce time	0.5	ms (max)
4.4 Release time	0.2	ms (max)
4.5 Insulation resistance (100 VDC open contact)	10^{11}	Ω (min)
4.6 Power	10	VA (max)
4.7 Switching voltage	200	VDC (max)
4.8 Switching current	0.5	A (max)
4.9 Carry current	1.0	A (max)
4.10 Breakdown voltage (across open contact)	250	VDC (min)
(between coil & contact)	500	VDC (min)
4.11 Life expectancy (signal level)	10^8	
4.12 Operating temp	-40 to 85°C	
4.13 Storage temp	-50 to 125°C	
4.14 Resonant frequency	3.5	KHZ
4.15 Vibration (10-2000HZ)	20	g (max)
4.16 Minimum permissible load	100	mVDC 10uA