

100315 Low Skew Quad Clock Driver

General Description

The 100315 contains four low skew differential drivers, designed for generation of multiple, minimum skew differential clocks from a single differential input. This device also has the capability to select a secondary single-ended clock source for use in lower frequency system level testing. The 100315 is a 300 Series redesign of the 100115 clock driver.

Features

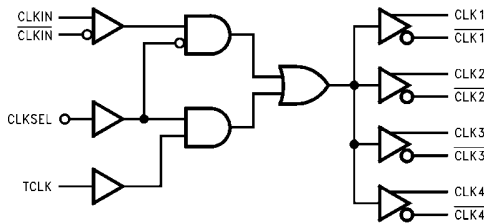
- Low output-to-output skew (≤ 50 ps)
- Differential inputs and outputs
- Secondary clock available for system level testing
- 2000V ESD protection
- Voltage compensated operating range: -4.2V to -5.7V

Ordering Code:

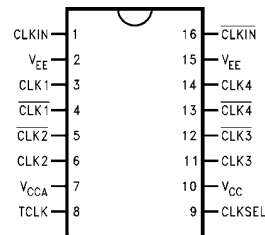
Order Number	Package Number	Package Descriptions
100315SC	M16A	16-Lead Small Outline Integrated Circuit (SOIC), JEDEC MS-012, 0.150 Narrow

Devices also available in Tape and Reel. Specify by appending the suffix letter "X" to the ordering code.

Logic Diagram



Connection Diagram



Pin Descriptions

Pin Names	Description
CLKIN, $\overline{\text{CLKIN}}$	Differential Clock Inputs
CLK ₁₋₄ , $\overline{\text{CLK}}_{1-4}$	Differential Clock Outputs
TCLK	Test Clock Input (Note 1)
CLKSEL	Clock Input Select (Note 1)

Note 1: TCLK and CLKSEL are single-ended inputs, with internal 50 k Ω pull-down resistors.

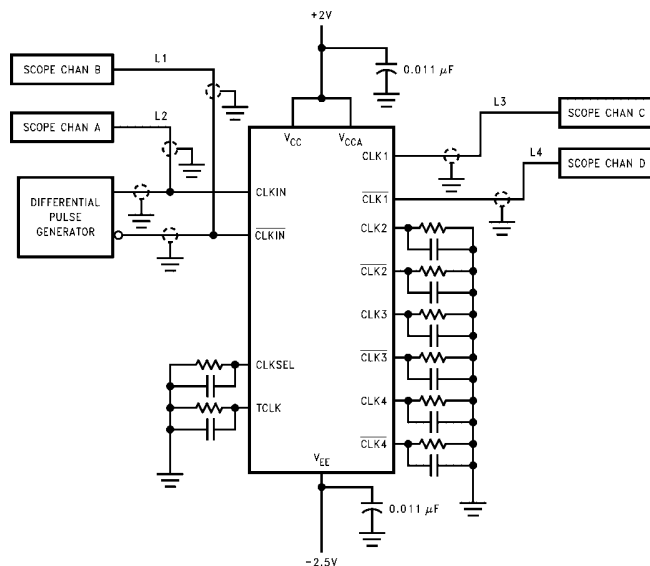
Truth Table

CLKSEL	CLKIN	$\overline{\text{CLKIN}}$	TCLK	CLK _n	$\overline{\text{CLK}}_{n}$
L	L	H	X	L	H
L	H	L	X	H	L
H	X	X	L	L	H
H	X	X	H	H	L

L = LOW Voltage Level
H = HIGH Voltage Level
X = Don't Care

Absolute Maximum Ratings (Note 2)				Recommended Operating Conditions					
Storage Temperature	-65°C to +150°C			Case Temperature (T _C)	0°C to +85°C				
Maximum Junction Temperature (T _J)	+150°C			Supply Voltage (V _{EE})	-5.7V to -4.2V				
Case Temperature under Bias (T _C)	0°C to +85°C			Note 2: The "Absolute Maximum Ratings" are those values beyond which the safety of the device cannot be guaranteed. The device should not be operated at these limits. The parametric values defined in the Electrical Characteristics tables are not guaranteed at the absolute maximum rating. The "Recommended Operating Conditions" table will define the conditions for actual device operation.					
V _{EE} Pin Potential to Ground Pin	-7.0V to +0.5V			Note 3: ESD testing conforms to MIL-STD-883, Method 3015.					
Input Voltage (DC)	V _{CC} to +0.5V								
Output Current (DC Output HIGH)	-50 mA								
Operating Range (Note 2)	-5.7V to -4.2V								
ESD (Note 3)	≥2000V								
DC Electrical Characteristics (Note 4)									
V _{EE} = -4.2V to -5.7V, V _{CC} = V _{CCA} = GND, T _C = 0°C to +85°C									
Symbol	Parameter	Min	Typ	Max	Units	Conditions			
V _{OH}	Output HIGH Voltage	-1025	-955	-870	mV	V _{IN} = V _{IH(Max)} or V _{IL(Min)}	Loading with 50Ω to -2.0V		
V _{OL}	Output LOW Voltage	-1830	-1705	-1620					
V _{OHC}	Output HIGH Voltage	-1035			mV	V _{IN} = V _{IH(Min)} or V _{IL(Max)}	Loading with 50Ω to -2.0V		
V _{OLC}	Output LOW Voltage			-1610					
V _{IH}	Single-Ended Input HIGH Voltage	-1165		-870	mV	Guaranteed HIGH Signal for All Inputs			
V _{IL}	Single-Ended Input LOW Voltage	-1830		-1475	mV	Guaranteed LOW Signal for All Inputs			
I _{IL}	Input LOW Current	0.50			μA	V _{IN} = V _{IL(Min)}			
I _{IH}	Input HIGH Current CLKIN, CLKIN TCLK CLKSEL			150	μA	V _{IN} = V _{IH(Max)}			
				250	μA				
				250	μA				
V _{DIFF}	Input Voltage Differential	150			mV	Required for Full Output Swing			
V _{CM}	Common Mode Voltage	V _{CC} - 2V		V _{CC} - 0.5V	V				
I _{CBO}	Input Leakage Current	-10			μA	V _{IN} = V _{EE}			
I _{EE}	Power Supply Current	-67		-35	mA				
Note 4: The specified limits represent the "worst case" value for the parameter. Since these "worst case" values normally occur at the temperature extremes, additional noise immunity and guard banding can be achieved by decreasing the allowable system operating ranges.									
AC Electrical Characteristics									
V _{EE} = -4.2V to -4.8, V _{CC} = V _{CCA} = GND									
Symbol	Parameter	T _C = 0°C		T _C = +25°C		T _C = +85°C		Units	Conditions
		Min	Max	Min	Max	Min	Max		
f _{MAX}	Maximum Clock Frequency	750		750		750		MHz	
t _{PLH}	Propagation Delay CLKIN, CLKIN to CLK ₍₁₋₄₎ , CLK ₍₁₋₄₎ Differential Single-Ended	0.59		0.62		0.67		ns	Figures 1, 3
t _{PHL}		0.79		0.82		0.87			
t _{PHL}		0.99		1.02		1.07			
t _{PLH}	Propagation Delay, TCLK to CLK ₍₁₋₄₎ , CLK ₍₁₋₄₎	0.50		0.50		0.50		ns	Figures 1, 2
t _{PHL}		1.20		1.20		1.20			
t _{PLH}	Propagation Delay, CLKSEL to CLK ₍₁₋₄₎ , CLK ₍₁₋₄₎	0.80		0.80		0.80		ns	Figures 1, 2
t _{PHL}		1.60		1.60		1.60			
t _{TLH}	Transition Time 20% to 80%, 80% to 20%	0.30		0.30		0.30		ns	Figures 1, 4
t _{THL}		0.80		0.80		0.80			
t _{OST}	Maximum Skew Opposite Edge Output-to-Output Variation Data to Output Path	50		50		50		ps	(Note 5)
DIFF		50		50		50			
Note 5: Output-to-Output Skew is defined as the absolute value of the difference between the actual propagation delay for any outputs within the same packaged device. The specifications apply to any outputs switching in the same direction either HIGH-to-LOW (t _{OSHL}), or LOW-to-HIGH (t _{OSLH}), or in opposite directions both HL and LH (t _{OST}). Parameters t _{OST} and t _{PS} guaranteed by design.									

Test Circuit



Note:
 Shown for testing CLKIN to CLK1 in the differential mode.
 L1, L2, L3 and L4 = equal length 50Ω impedance lines.
 All unused inputs and outputs are loaded with 50Ω in parallel with ≤ 3 pF to GND.
 Scope should have 50Ω input terminator internally.

FIGURE 1. AC Test Circuit

Switching Waveforms

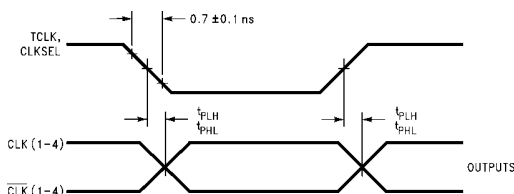


FIGURE 2. Propagation Delay, TCLK, CLKSEL to Outputs

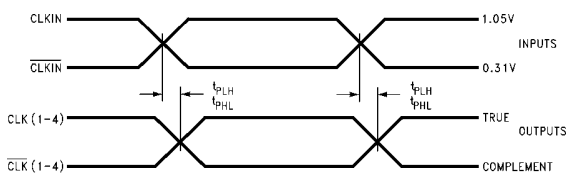


FIGURE 3. Propagation Delay, CLKIN/CLKIN to Outputs

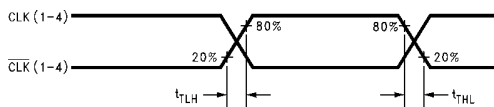
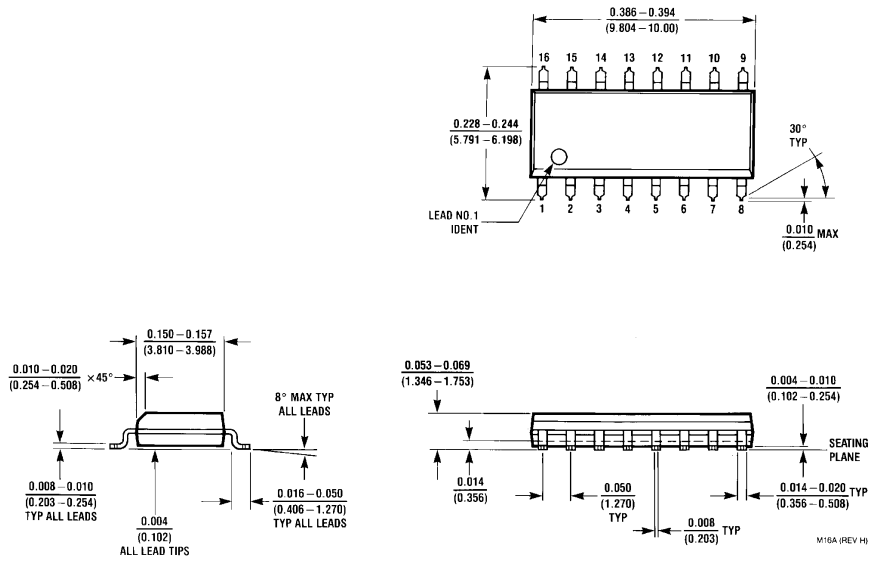


FIGURE 4. Transition Times

Physical Dimensions inches (millimeters) unless otherwise noted



16-Lead Small Outline Integrated Circuit (SOIC), JEDEC MS-012, 0.150 Narrow Package Number M16A

Fairchild does not assume any responsibility for use of any circuitry described, no circuit patent licenses are implied and Fairchild reserves the right at any time without notice to change said circuitry and specifications.

LIFE SUPPORT POLICY

FAIRCHILD'S PRODUCTS ARE NOT AUTHORIZED FOR USE AS CRITICAL COMPONENTS IN LIFE SUPPORT DEVICES OR SYSTEMS WITHOUT THE EXPRESS WRITTEN APPROVAL OF THE PRESIDENT OF FAIRCHILD SEMICONDUCTOR CORPORATION. As used herein:

1. Life support devices or systems are devices or systems which, (a) are intended for surgical implant into the body, or (b) support or sustain life, and (c) whose failure to perform when properly used in accordance with instructions for use provided in the labeling, can be reasonably expected to result in a significant injury to the user.
2. A critical component in any component of a life support device or system whose failure to perform can be reasonably expected to cause the failure of the life support device or system, or to affect its safety or effectiveness.

www.fairchildsemi.com