

Focused Lens-End Lamps

Line No.	Part No.	Volts	Amps	Lux*	Color Temp. Degrees Kelvin	Life Hours	Vacuum Or Gas	Filament Type	Base Type	Drawing
1	L1005	2.5	0.350	1,550	2,200	25,000	V	C-6	Brass	A
2	L1005A	2.5	0.350	1,550	2,200	25,000	V	C-6	Brass	C
3	L1026A	2.5	0.350	2,000	2,250	10,000	V	C-2R	Brass	C
4	L1023	2.5	0.350	2,100	2,250	15,000	V	C-6	Brass	A
5	L1006	3.5	0.450	1,600	2,230	30,000	G	C-6	Brass	A
6	L1024	3.5	0.560	3,800	2,490	4,500	G	C-6	Brass	A
7	L1024A	3.5	0.560	3,800	2,490	4,500	G	C-6	Brass	C
8	L1021	3.5	0.600	12,000	2,850	100	Krypton	C-6	Brass	A
9	L1030	3.5	1.200	16,000	2,950	150	Halogen	C-6	Brass	A
10	L1007	5.0	0.160	880	2,300	12,500	V	C-2R	Brass	B
11	L1025	5.0	0.240	1,200	2,450	10,000	V	C-2R	Brass	B

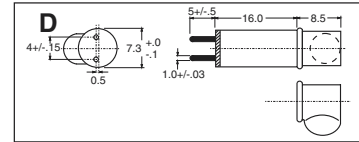
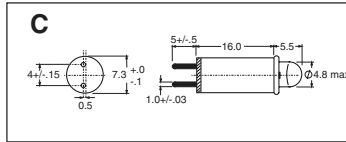
* Lux at 50mm. Light Distribution page 7, figure 1.



Telephone: 781-935-4442
Fax: 781-938-5867

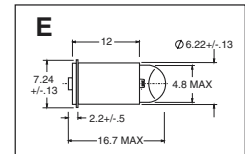
sales@gilway.com
www.gilway.com

Gilway
Technical Lamp
Engineering Catalog 169



Cartridge Lens-End Lamps

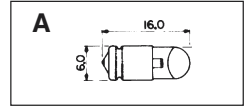
Line No.	Part No.	Volts	Amps	Life Hours	Base Type	Drawing
7	L4038	2.50	0.350	10,000	Cartridge	C
8	L4040	2.50	0.300	30,000	Cartridge	D
		2.75	0.310	20,000		
		3.00	0.325	10,000		
		3.25	0.340	3,500		
3.50	0.370	1,000				
9	L4075	5.00	0.170	12,500	Cartridge	C



Midget Flanged Base Lens-End Lamps

Line No.	Part No.	Volts	Amps	Lux*	Color Temp. Degrees Kelvin	Life Hours	Vacuum Or Gas	Filament Type	Drawing
10	169-14	2.5	0.340	1,000	2,170	30,000	V	C-6	E
11	180-14	2.5	0.350	2,100	2,250	15,000	V	C-6	E
12	173-14	3.5	0.600	12,000	2,850	100	G	C-6	E
13	179-14	3.5	0.750	13,000	3,030	35	G	C-6	E
14	174-14	5.0	0.170	880	2,300	12,500	V	C-2R	E

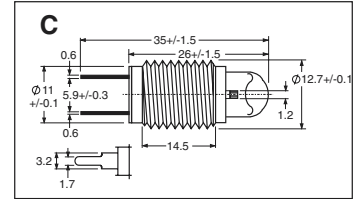
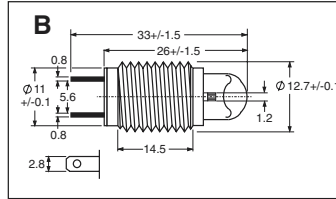
* Lux at 50mm



Midget Grooved Base Lens-End Lamps

Line No.	Part No.	Volts	Amps	Lux*	Color Temp. Degrees Kelvin	Life Hours	Vacuum Or Gas	Filament Type	Drawing
1	L4044	2.5	0.350	1,600	2,250	10,000	V	C-6	A
2	L4076	5.0	0.240	-	2,450	10,000	V	C-2R	A

* Lux at 50mm



Focused Lens-End Lamps

Line No.	Part No.	Volts	Amps	Lux*	Color Temp. Degrees Kelvin	Life Hours	Vacuum Or Gas	Filament Type	Base Type	Drawing
3	L8006	5.0	0.770	26 lumens	2,420	10,000	G	C-6	½-20 UNF-2A	B
4	L8035	5.0	0.770	7,000	2,420	10,000	G	C-6	½-20 UNF-2A	C
5	L8008	5.0	0.750	8,000	2,490	10,000	G	C-6	½-20 UNF-2A	B
6	L8050	5.0	0.810	3,000	2,140	20,000	V	C-6	½-20 UNF-2A	C
7	L8017	6.0	1.600	38,000	2,900	150	G	C-6	½-20 UNF-2A	B

* Lux at 50mm. Light Distribution page 7, Figure 2.