

GaAs MMIC 4 x 2 SWITCH MATRIX 700 - 3000 MHz

FEBRUARY 2001

v03.0101

Features

- 4x2 SWITCH MATRIX USING ONE IC
- 4x4 SWITCH MATRIX USING TWO IC's
- INTEGRATED 4 BIT DECODER
- SINGLE POSITIVE SUPPLY: $V_{dd} = +5V$
- SUITABLE FOR DBS SWITCHING APPLICATIONS

General Description

The HMC276QS24 is a low-cost 4x2 switch matrix in a 24-lead QSOP package for use in RF multiplexing applications from 700 to 3000 MHz. A positive voltage controlled 4 bit decoder is integrated on the switch. The switch may be used in either 75 ohm or 50 ohm DBS, CATV, cable modem, or cellular systems.



Both switch outputs (OP1 & OP2) can independently select any of the four inputs (HH, HL, VH, VL) or simultaneously select the same inputs. Note that the switch is bi-directional and input/output functionality may be interchanged. The recommended loading impedance is 62.5 ohms on each input (HH, HL, VH, VL) and 75 ohms on each output (OP1 & OP2). All data presented was measured in a 50 ohm (input/output) system.

Guaranteed Performance, For $V_{dd} = +5V$ in a 50 Ohm system, -40 to +85 deg C

Parameter	Frequency	Min.	Typ.	Max.	Units
Insertion Loss	700 - 1000 MHz		6.0	6.7	dB
	950 - 1450 MHz		5.8	6.5	dB
	1450 - 3000 MHz		5.5	6.5	dB
Isolation	700 - 1000 MHz	34	>38		dB
	950 - 1450 MHz	See OP1/2 Isolation Tables pg 7-129			
	1450 - 2150 MHz	29	>33		dB
	2150 - 3000 MHz	25	>30		dB
Return Loss (Input; VL, HL, VH, HH)	700 - 2150 MHz	12	16		dB
	2150 - 3000 MHz	14	17		dB
Return Loss (Output: OP1, OP2)	700 - 2150 MHz	14	18		dB
	2150 - 3000 MHz	11	14		dB
Output IP3	700 - 3000MHz	31	37		dBm
Input Power for 1 dB Compression	700 - 3000 MHz	22	26		dBm
Switching Speed	700 - 3000 MHz		140		ns
		tRISE, tFALL (10/90% RF) tON, tOFF (50% CTL to 10/90% RF)	350		ns



HMC276QS24 4 x 2 SWITCH MATRIX 700 - 3000 MHz

v03.0101

FEBRUARY 2001

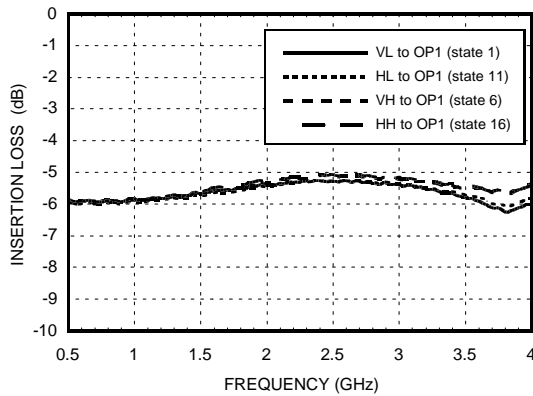
OP1 Isolation 950 - 1450 MHz

Input to Output State	Interfering Signal	State	Min (dB)	Typ (dB)
HL to OP1	VL to OP1	9	34	36
	VL to OP1	11	36	38
	All Other States	All Other States	40	>43
VL to OP1	VH to OP1	2	37	40
	All Other States	All Other States	40	>43
VH to OP1	VL to OP1	5	35	37
	VL to OP1	6	37	40
	All Other States	All Other States	40	>42
HH to OP1	VL to OP1	13	35	37
	VL to OP1	16	36	38
	HL to OP1	15	39	41

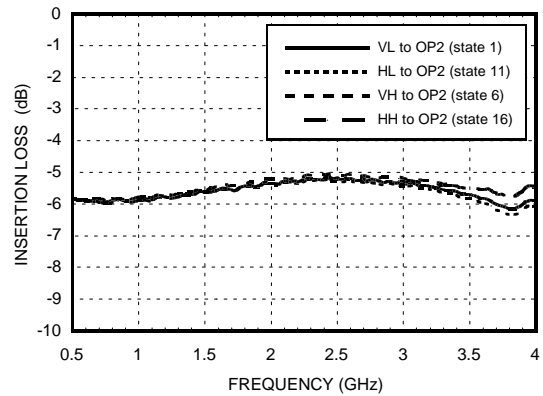
OP2 Isolation 950 - 1450 MHz

Input to Output State	Interfering Signal	State	Min (dB)	Typ (dB)
HL to OP2	HH to OP2	15	38	40
	All Other States	All Other States	40	>43
VH to OP2	HL to OP2	10	34	37
	HL to OP2	6	36	38
	All Other States	All Other States	37	>40
VL to OP2	HL to OP2	9	34	36
	HL to OP2	1	36	38
	All Other States	All Other States	40	>42
HH to OP2	HL to OP2	12	35	37
	HL to OP2	16	38	40
	All Other States	All Other States	40	>42

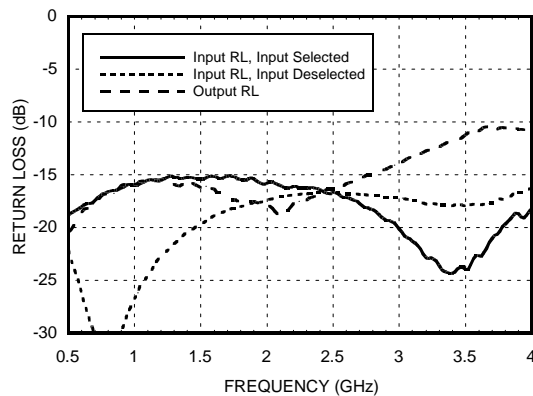
Insertion Loss on OP1



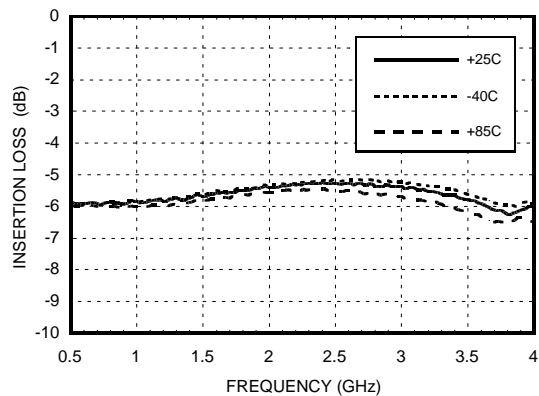
Insertion Loss on OP2



Return Loss



Typical Insertion Loss vs Temperature



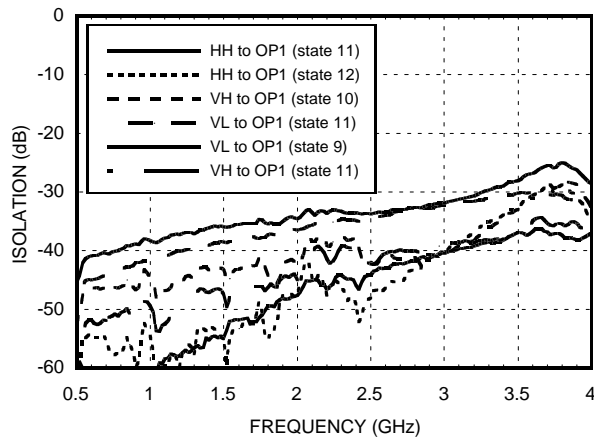
S-Parameter data is available On-Line at www.hittite.com

HMC276QS24 4 x 2 SWITCH MATRIX 700 - 3000 MHz

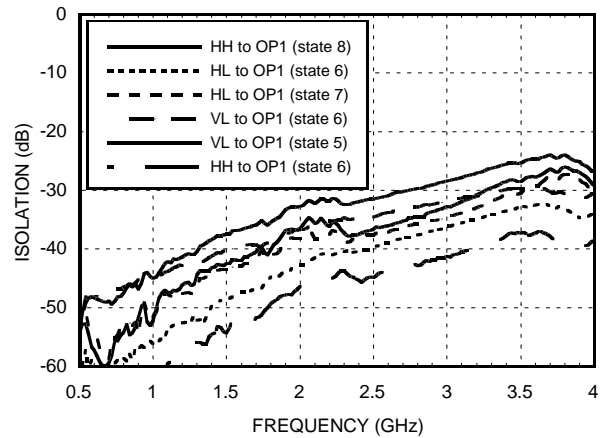
FEBRUARY 2001

v03.0101

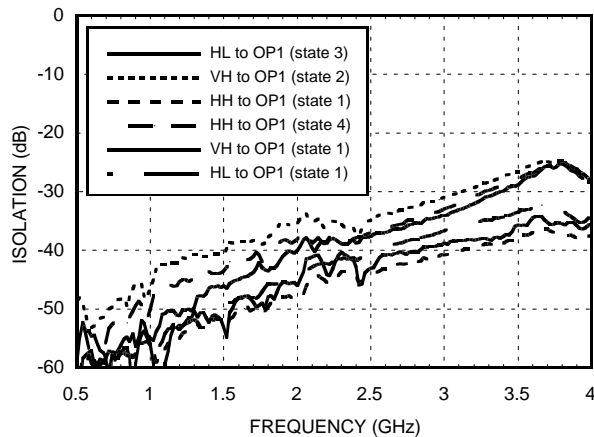
Isolation when HL is connected to OP1



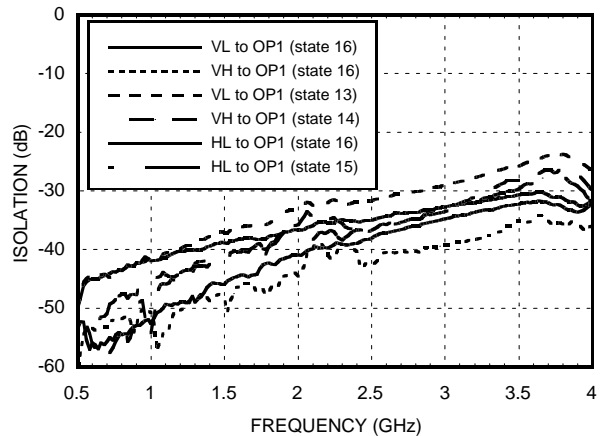
Isolation when VH is connected to OP1



Isolation when VL is connected to OP1



Isolation when HH is connected to OP1



Note: All isolations are recorded above insertion loss & measured at output of switch.

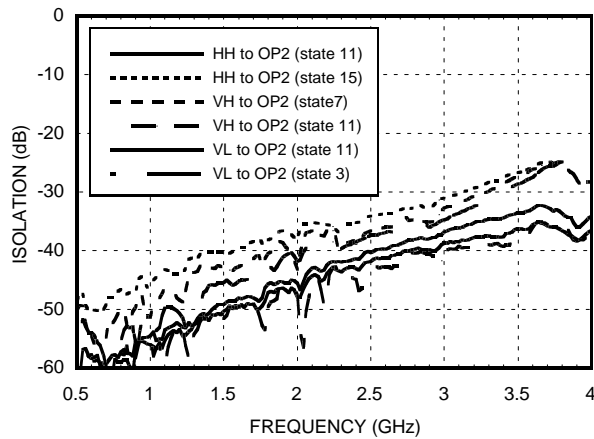


HMC276QS24 4 x 2 SWITCH MATRIX 700 - 3000 MHz

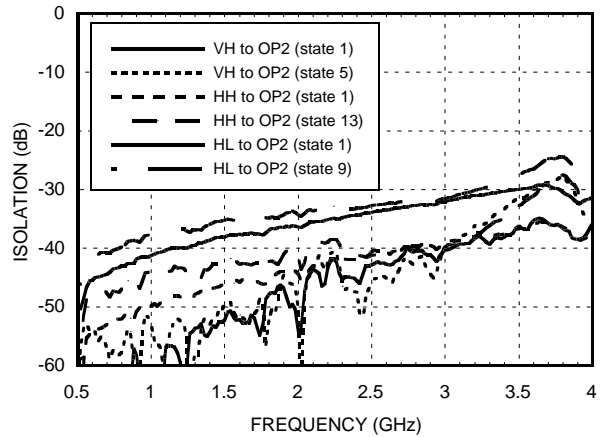
v03.0101

FEBRUARY 2001

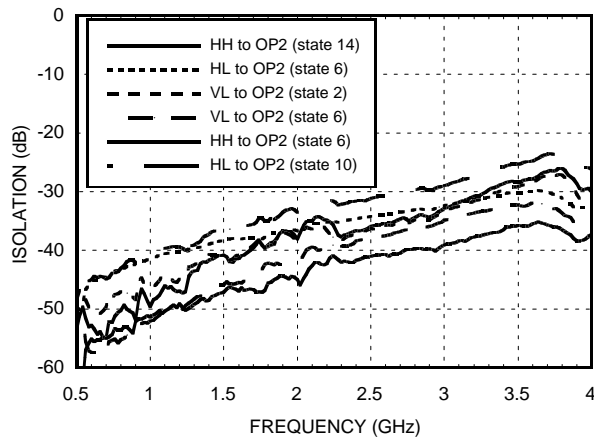
Isolation when HL is connected to OP2



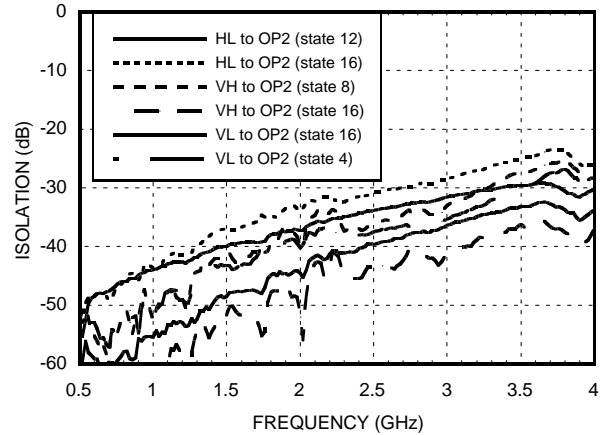
Isolation when VL is connected to OP2



Isolation when VH is connected to OP2



Isolation when HH is connected to OP2



Note: All isolations are recorded above insertion loss & measured at output of switch.

HMC276QS24 4 x 2 SWITCH MATRIX 700 - 3000 MHz

FEBRUARY 2001

v03.0101

Output Third Order Intercept Point

Path	State	F1 Pout (dBm)	Pout Intermod (dBm)	IMR (dBc)	Output IP3 (dBm)
VL to OP1	1	-12	-106	94	35
VL to OP2	1	-12	-114	102	39
HL to OP1	11	-12	-108	96	36
HL to OP2	11	-12	-110	98	37
VH to OP1	6	-12	-115	103	39.5
VH to OP2	6	-12	-115	103	39.5
HH to OP1	16	-12	-116	104	40
HH to OP2	16	-12	-114	102	39
<i>Test Conditions</i> Temp= +25C F1=2150(MHz): -12 dBm at the output F2=2151(MHz): -12 dBm at the output				Vdd=+5V Vctl. Low = 0V High = +5V	

7

SMT MATRIX SWITCHES



HMC276QS24 4 x 2 SWITCH MATRIX 700 - 3000 MHz

v03.0101

FEBRUARY 2001

Truth Table

State	CONTROL INPUT				OUTPUT to INPUT STATE		RF PATH STATE							
	HV 1	Tone 1	HV 2	Tone 2	OP 1	OP 2	VL to OP1	HL to OP1	VH to OP1	HH to OP1	VL to OP2	HL to OP2	VH to OP2	HH to OP2
1	0	0	0	0	VL	VL	LOSS	ISOL	ISOL	ISOL	LOSS	ISOL	ISOL	ISOL
2	0	0	0	1	VL	VH	LOSS	ISOL	ISOL	ISOL	ISOL	ISOL	LOSS	ISOL
3	0	0	1	0	VL	HL	LOSS	ISOL	ISOL	ISOL	ISOL	LOSS	ISOL	ISOL
4	0	0	1	1	VL	HH	LOSS	ISOL	ISOL	ISOL	ISOL	ISOL	ISOL	LOSS
5	0	1	0	0	VH	VL	ISOL	ISOL	LOSS	ISOL	LOSS	ISOL	ISOL	ISOL
6	0	1	0	1	VH	VH	ISOL	ISOL	LOSS	ISOL	ISOL	ISOL	LOSS	ISOL
7	0	1	1	0	VH	HL	ISOL	ISOL	LOSS	ISOL	ISOL	LOSS	ISOL	ISOL
8	0	1	1	1	VH	HH	ISOL	ISOL	LOSS	ISOL	ISOL	ISOL	ISOL	LOSS
9	1	0	0	0	HL	VL	ISOL	LOSS	ISOL	ISOL	LOSS	ISOL	ISOL	ISOL
10	1	0	0	1	HL	VH	ISOL	LOSS	ISOL	ISOL	ISOL	ISOL	LOSS	ISOL
11	1	0	1	0	HL	HL	ISOL	LOSS	ISOL	ISOL	ISOL	LOSS	ISOL	ISOL
12	1	0	1	1	HL	HH	ISOL	LOSS	ISOL	ISOL	ISOL	ISOL	ISOL	LOSS
13	1	1	0	0	HH	VL	ISOL	ISOL	ISOL	LOSS	LOSS	ISOL	ISOL	ISOL
14	1	1	0	1	HH	VH	ISOL	ISOL	ISOL	LOSS	ISOL	ISOL	LOSS	ISOL
15	1	1	1	0	HH	HL	ISOL	ISOL	ISOL	LOSS	ISOL	LOSS	ISOL	ISOL
16	1	1	1	1	HH	HH	ISOL	ISOL	ISOL	LOSS	ISOL	ISOL	ISOL	LOSS

Control Voltages

HV1, TONE1, HV2, TONE2

State	Bias Condition
Low (0)	0 to 0.8 Vdc @ 5 uA Typical
High (1)	+2.0 to +5.0 Vdc @25 uA Typical

Bias Voltage

Vdd Range = +5.0 Vdc ± 10%		
Vdd (VDC)	Idd (Typ.) (mA)	Idd (Max.) (mA)
+5.0	1	2

DC BLOCKING AND DECOUPLING CAPACITORS

The HMC276QS24 requires DC blocks on all 6 RF ports(OP1, OP2, VL, HL, VH, HH). Characterization on the HMC276QS24 was done using 0603 size 330pF capacitors on all RF ports. A 0.01µF DC decoupling capacitor (0603 size) is recommended for the Vdd pin.

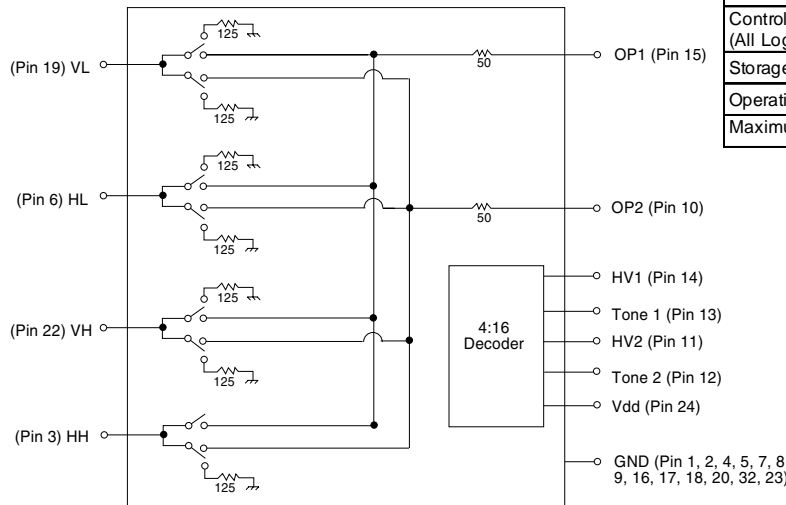


HMC276QS24 4 x 2 SWITCH MATRIX 700 - 3000 MHz

FEBRUARY 2001

v03.0101

Functional Diagram



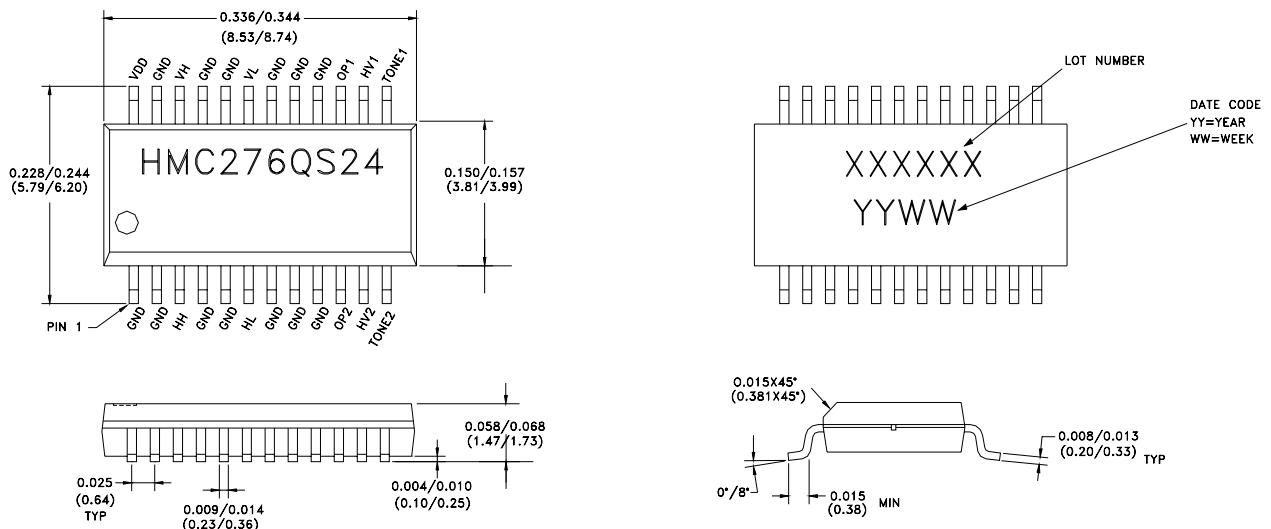
Absolute Maximum Ratings

Bias Voltage Range (Vdd)	+8.0 Vdc
Control Voltage Range (All Logic Lines)	Vdd + 0.5V to -0.2V Vdc
Storage Temperature	-65 to +150 deg C
Operating Temperature	-40 to +85 deg C
Maximum Input Power	+17dBm (700-2150MHz)

7

SMT MATRIX SWITCHES

Outline Drawing



- 1) MATERIAL:
 - A) PACKAGE BODY: LOW STRESS INJECTION MOLDED PLASTIC, SILICA & SILICONE IMPREGNATED
 - B) LEADFRAME MATERIAL: COPPER ALLOY
2. PLATING: LEAD-TIN SOLDER PLATE
3. DIMENSIONS ARE IN INCHES (MILLIMETERS)

HMC276QS24 4 x 2 SWITCH MATRIX 700 - 3000 MHz

v03.0101

FEBRUARY 2001

Switch Application Circuit for 4x4 Switch Matrix

The HMC276QS24 switch can operate as a 4x4 switch by connecting the 4 inputs of two switches directly together.

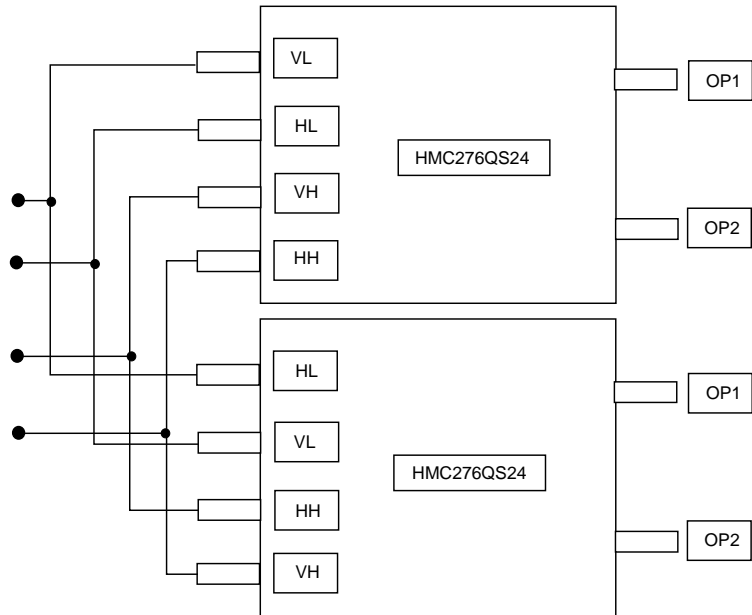
The VL, VH, HL, and HH inputs of the first switch should be connected to the second switch, as illustrated.

Mirror image switch performance can be realized by inverting the HV1 & HV2 logic control signals of one of the HMC276QS24 switches.

The input loading impedance of two switches in parallel should be 31.25 ohms. The output loading impedance on each output should be 75 ohms. The interconnect RF line between the switch's inputs should be an RF trace with a characteristic impedance of 62.5 ohms. This will allow the switch to remain matched in all possible switch states.

The HMC276QS24 does not provide output to output (OP1 to OP2) isolation. For this reason, it is recommended that external amplifiers should be used at each output. The amplifier's reverse isolation will provide output to output isolation, if this is necessary.

Each HMC276QS24 requires DC blocking capacitors on ALL RF input and output ports.

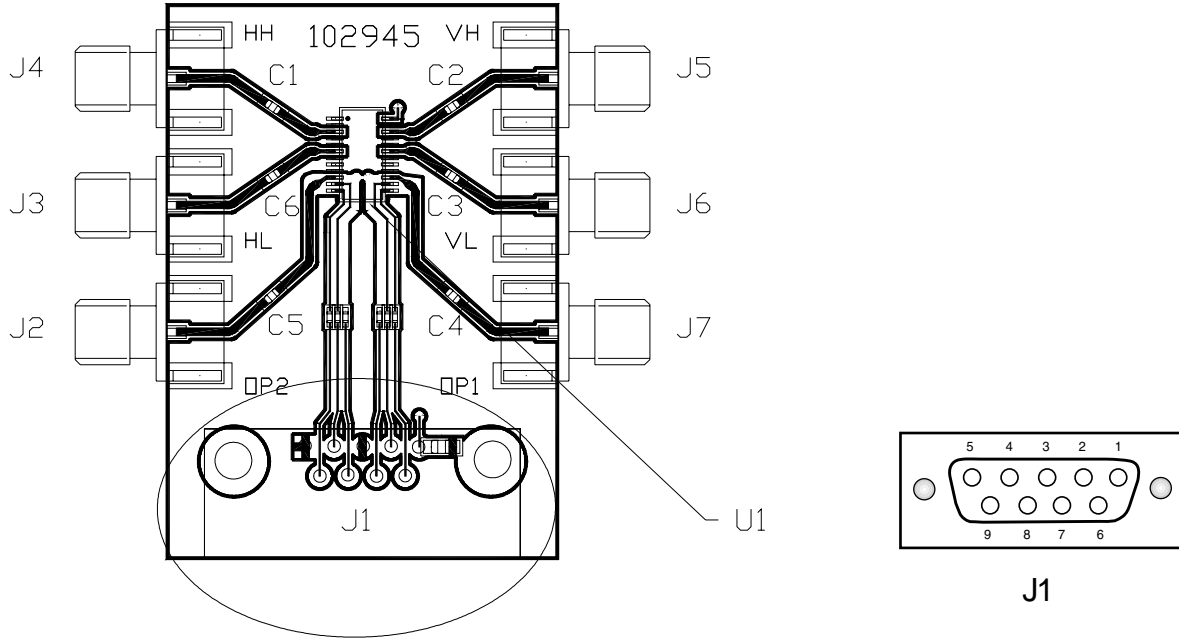


HMC276QS24 4 x 2 SWITCH MATRIX 700 - 3000 MHz

FEBRUARY 2001

v03.0101

Evaluation PCB Layout (Top View)



7

SMT MATRIX SWITCHES

The circuit board used in the final application should be generated with proper RF circuit design techniques. Signal lines at the RF port should have 50 ohm impedance and the package ground leads should be connected directly to the ground plane similar to that shown above. A generous number of ground vias should be used to interconnect top/bottom ground planes. The evaluation circuit board shown above is available from Hittite Microwave Corporation upon request.

List of Material

Item	Description
J2 - J7	PC Mount SMA RF Connector
J1	9 Pin Rt. Angle Connector
C1 - C6	100 pF Capacitor, 0402 Pkg.
U1	HMC276QS24 4x2 Switch Matrix
PCB*	102945 Eval Board
* Circuit Board Material : 4350	

Multi Pin DC Interface (J1)

PIN	LINE
1	Vdd
2	HV1
3	GND
4	HV2
5	GND
6	Tone1
7	N/C
8	N/C
9	Tone2

HMC276QS24 4 x 2 SWITCH MATRIX 700 - 3000 MHz

v03.0101

FEBRUARY 2001

NOTE: