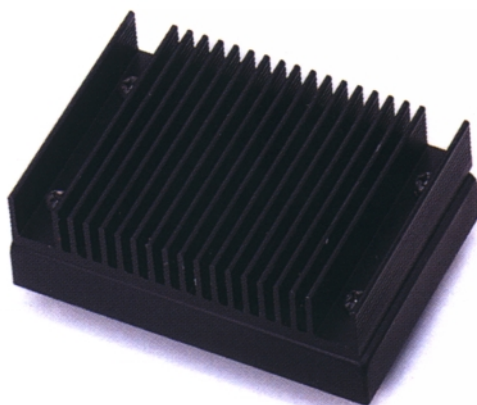


40 W
DC/DC
TDD
MODUL

TDD 40 DC Power Package

40 Watt Wide-Input 3" x 2" - Serie



HN-MODUL

Besondere Merkmale Features

Weiter Eingang 2:1/3:1	Wide input range 2:1/3:1
Geringe Bauhöhe	Low profile
Isolationspg. min. 1500V DC	Isolation min. 1500V DC
Hoher Wirkungsgrad	High efficiency
Kurzschlußfest	Short circuit protection
Eingang-PI-Filter	Input-PI-Filter

Anwendung Application

Telekommunikation	Telecommunication
Rechnersysteme	Computer applications
MSR	Control equipments
Mikroprozessorsysteme	Microprocessor systems

Technische Daten Specification

(bei 25°C Umgebungstemperatur) (at 25°C ambient temperature)

Eingangsdaten Input Specifications

Eingangsspannung	Input voltages	18...60, 35...75 VDC
Eingangsfiler (integriert)	Build in filter	PI-Type

Ausgangsdaten Output Specifications

Leistung	Power	40 Watt
Wirkungsgrad	Efficiency	typ. 84%
Schaltfrequenz	Switching frequency	typ. 200 kHz
Regelabweichung	Voltage accuracy	typ. ±2%
Last	Load	± 2% (Dual ± 5%)
Eingang	Line	± 1%
Restwelligkeit	Ripple and noise	150mV typ.

Allgemeine Daten General Specifications

Betriebstemperatur	Operating temp.	-25°C...+71°C, derating (51°-71°C 2%/°C)
Lagertemperatur	Storage temperature	-40°C...+100°C
Temperaturkoeffizient	Temp. coefficient	0.02% / K
Kurzschlußfest	Short circuit protection	Current foldback
Gehäusematerial	Case material	Copper with black coated
Kühlung	Cooling	Free air convection

TDD 40 DC Power Package

40 Watt Wide-Input 3" x 2" Compact-Serie

Bestell-Information / Order Information

Modell	Eingang Input VDC	Ausgang1 Output 1 V/mA	Ausgang 2 Output 2 V/mA	Gehäuse Case
TDD402403S	18-60	3,3/10000		3" x 2"
TDD402405S	18-60	05/8000		3" x 2"
TDD402412S	18-60	12/3500		3" x 2"
TDD402415S	18-60	15/2800		3" x 2"
TDD404803S	35-75	3,3/10000		3" x 2"
TDD404805S	35-75	05/8000		3" x 2"
TDD404812S	35-75	12/3500		3" x 2"
TDD404815S	35-75	15/2800		3" x 2"
TDD402412D	18-60	+12/1700	-12/1700	3" x 2"
TDD402415D	18-60	+15/1400	-15/1400	3" x 2"
TDD404812D	35-75	+12/1700	-12/1700	3" x 2"
TDD404815D	35-75	+15/1400	-12/1400	3" x 2"

MEMO:

PIN-Belegung und Zeichnung / Pin Assignments & Drawing, mm (inch)

