

**4A, 100V, 0.60 Ohm, P-Channel Power MOSFET**

This P-Channel enhancement mode silicon gate power field effect transistor is designed for applications such as switching regulators, switching converters, motor drivers, relay drivers, and drivers for high power bipolar switching transistors requiring high speed and low gate drive power. These types can be operated directly from integrated circuits.

Formerly developmental type TA17501.

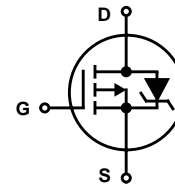
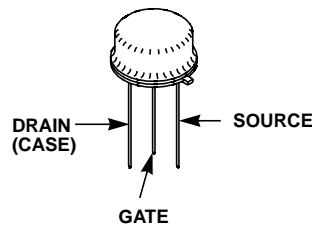
**Ordering Information**

PART NUMBER	PACKAGE	BRAND
IRFF9120	TO-205AF	IRFF9120

NOTE: When ordering, use the entire part number.

**Features**

- 4A, 100V
- $r_{DS(ON)} = 0.60\Omega$
- Single Pulse Avalanche Energy Rated
- SOA is Power-Dissipation Limited
- Nanosecond Switching Speeds
- Linear Transfer Characteristics
- High Input Impedance

**Symbol**

**Packaging**
**JEDEC TO-205AF**


# IRFF9120

## Absolute Maximum Ratings $T_C = 25^\circ\text{C}$ , Unless Otherwise Specified

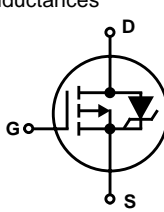
	IRFF9120	UNITS
Drain to Source Voltage (Note 1) . . . . .	-100	V
Drain to Gate Voltage ( $R_{GS} = 20k\Omega$ ) (Note 1) . . . . .	-100	V
Continuous Drain Current, $T_C = 25^\circ\text{C}$ . . . . .	-4	A
Pulsed Drain Current (Note 3) . . . . .	-16	A
Gate to Source Voltage . . . . .	$\pm 20$	V
Maximum Power Dissipation, (Figure 14) . . . . .	20	W
Linear Derating Factor (Figure 14) . . . . .	0.16	$\text{W}/^\circ\text{C}$
Single Pulse Avalanche Energy Rating (Note 4) . . . . .	370	mJ
Operating and Storage Temperature . . . . .	-55 to 150	$^\circ\text{C}$
Maximum Temperature for Soldering Leads at 0.063in (1.6mm) from Case for 10s . . . . .	300	$^\circ\text{C}$
Package Body for 10s, See Techbrief 334 . . . . .	260	$^\circ\text{C}$

CAUTION: Stresses above those listed in "Absolute Maximum Ratings" may cause permanent damage to the device. This is a stress only rating and operation of the device at these or any other conditions above those indicated in the operational sections of this specification is not implied.

**NOTE:**

1.  $T_J = 25^\circ\text{C}$  to  $125^\circ\text{C}$ .

## Electrical Specifications $T_C = 25^\circ\text{C}$ , Unless Otherwise Specified

PARAMETER	SYMBOL	TEST CONDITIONS	MIN	TYP	MAX	UNITS		
Drain to Source Breakdown Voltage	$BV_{DSS}$	$V_{GS} = 0V, I_D = 250\mu A$	-100	-	-	V		
Gate Threshold Voltage	$V_{GS(TH)}$	$V_{DS} = V_{GS}, I_D = 250\mu A$	-2.0	-	-4.0	V		
Zero Gate Voltage Drain Current	$I_{DSS}$	$V_{DS} = \text{Max Rating}, V_{GS} = 0V$	-	-	-250	$\mu A$		
		$V_{DS} = \text{Max Rating} \times 0.8, V_{GS} = 0V, T_J = 125^\circ\text{C}$	-	-	-1000	$\mu A$		
On-State Drain Current (Note 2)	$I_{D(ON)}$	$V_{DS} > I_{D(ON)} \times r_{DS(ON)MAX}, V_{GS} = -10V$	-4	-	-	A		
Gate to Source Leakage Forward	$I_{GSS}$	$V_{GS} = -20V$	-	-	-100	nA		
Gate to Source Leakage Reverse	$I_{GSS}$	$V_{GS} = 20V$	-	-	100	nA		
Drain to Source On-State Resistance (Note 2)	$r_{DS(ON)}$	$V_{GS} = 10V, I_D = -2A$	-	0.5	0.6	$\Omega$		
Forward Transconductance (Note 2)	$g_{fs}$	$V_{DS} > I_{D(ON)} \times r_{DS(ON) MAX}, I_D = 2A$	1.25	2	-	S		
Turn-On Delay Time	$t_{D(ON)}$	$V_{DD} \cong 0.5BV_{DSS}, I_D = 4A, R_G = 9.1\Omega$ (Figure 18) MOSFET Switching Times are Essentially Independent of Operating Temperature	-	25	50	ns		
Rise Time	$t_r$		-	50	100	ns		
Turn-Off Delay Time	$t_{D(OFF)}$		-	50	100	ns		
Fall Time	$t_f$		-	50	100	ns		
Total Gate Charge (Gate to Source + Gate to Drain)	$Q_{G(TOT)}$	$V_{GS} = 10V, I_D = 4A, V_{DS} = 0.8 \text{ Max } BV_{DSS}$ (See Figure 18 for Test Circuit) Gate Charge is Essentially Independent of Operating Temperature	-	16	22	nC		
Gate to Source Charge	$Q_{GS}$		-	9	-	nC		
Gate to Drain "Miller" Charge	$Q_{GD}$		-	7	-	nC		
Input Capacitance	$C_{ISS}$	$V_{GS} = 0V, V_{DS} = 25V, f = 1.0\text{MHz}$ , See Figure 10	-	300	-	pF		
Output Capacitance	$C_{OSS}$		-	200	-	pF		
Reverse Transfer Capacitance	$C_{RSS}$		-	50	-	pF		
Internal Drain Inductance	$L_D$	Measured from the Drain Lead, 5.0mm (0.2in) From Header to Center of Die	Modified MOSFET Symbol Showing the Internal Device Inductances 		-	5.0	-	nH
Internal Source Inductance	$L_S$	Measured from the Source Lead, 5.0mm (0.2in) from Header to Source Bonding Pad			-	15	-	nH
Junction to Case	$R_{\theta JC}$		-	-	6.25	$^\circ\text{C}/\text{W}$		
Junction to Ambient	$R_{\theta JA}$	Typical Socket Mount	-	-	175	$^\circ\text{C}/\text{W}$		

Source to Drain Diode Specifications

PARAMETER	SYMBOL	TEST CONDITIONS	MIN	TYP	MAX	UNITS
Continuous Source Current	$I_{SD}$	Modified MOSFET Symbol Showing the Integral Reverse P-N Junction Rectifier	-	-	-4	A
Pulse Source Current (Note 3)	$I_{SM}$		-	-	-16	A
Source to Drain Diode Voltage (Note 2)	$V_{SD}$	$T_J = 25^{\circ}\text{C}$ , $I_{SD} = -4\text{A}$ , $V_{GS} = 0\text{V}$	-	-	-1.5	V
Diode Reverse Recovery Time	$t_{rr}$	$T_J = 150^{\circ}\text{C}$ , $I_{SD} = 4\text{A}$ , $dI_{SD}/dt = 100\text{A}/\mu\text{s}$	-	230	-	ns
Reverse Recovery Charge	$Q_{RR}$	$T_J = 150^{\circ}\text{C}$ , $I_{SD} = -4\text{A}$ , $dI_{SD}/dt = 100\text{A}/\mu\text{s}$	-	1.3	-	$\mu\text{C}$

NOTES:

2. Pulse test: Pulse width  $\leq 300\mu\text{s}$ , Duty Cycle 2%.
3. Repetitive rating: Pulse width limited by maximum junction temperature. See Transient Thermal Impedance Curve (Figure 3).
4.  $V_{DD} = 25\text{V}$ , starting  $T_J = 250^{\circ}\text{C}$ ,  $L = 34.7\text{mH}$ ,  $R_G = 25\Omega$ , peak  $I_{AS} = 4.0\text{A}$ . See Figures 15 and 16)

Typical Performance Curves

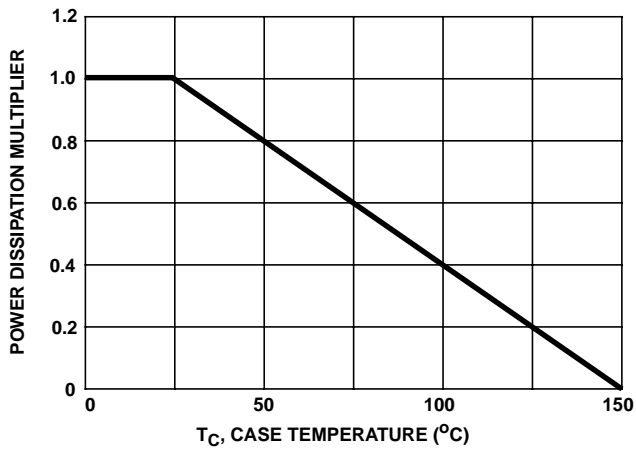


FIGURE 1. NORMALIZED POWER DISSIPATION vs CASE TEMPERATURE

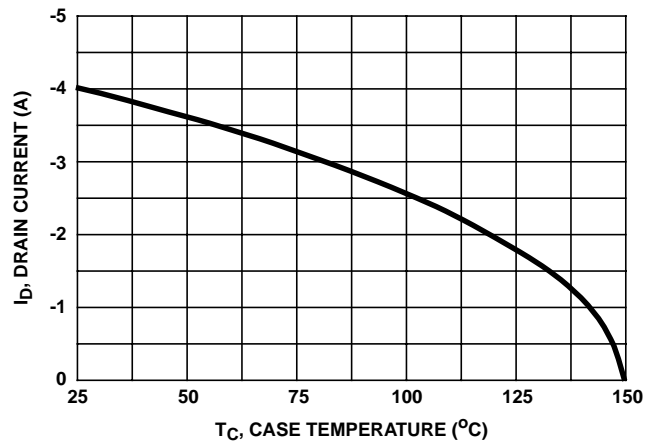


FIGURE 2. MAXIMUM CONTINUOUS DRAIN CURRENT vs CASE TEMPERATURE

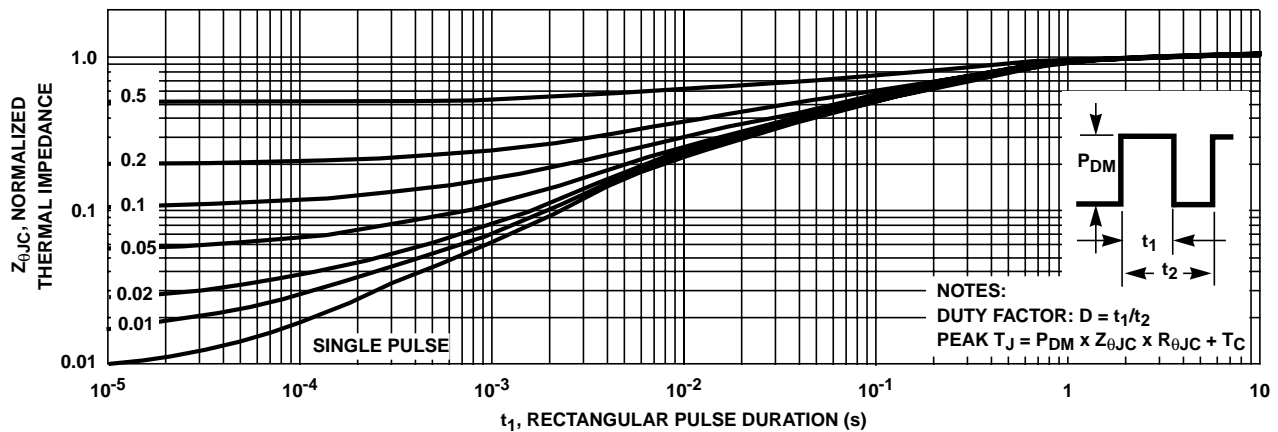


FIGURE 3. NORMALIZED MAXIMUM TRANSIENT THERMAL IMPEDANCE

Typical Performance Curves (Continued)

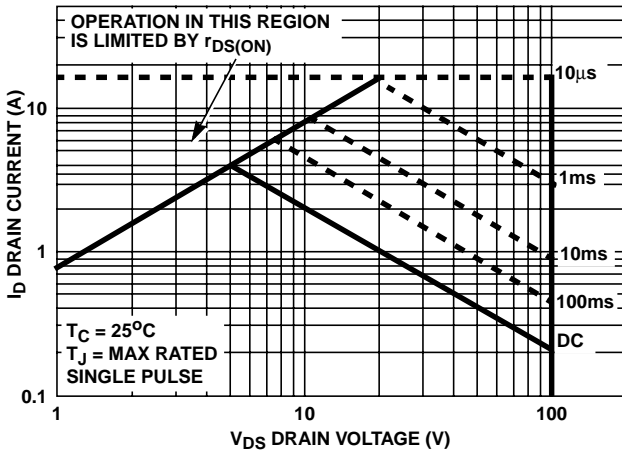


FIGURE 4. FORWARD BIAS SAFE OPERATING AREA

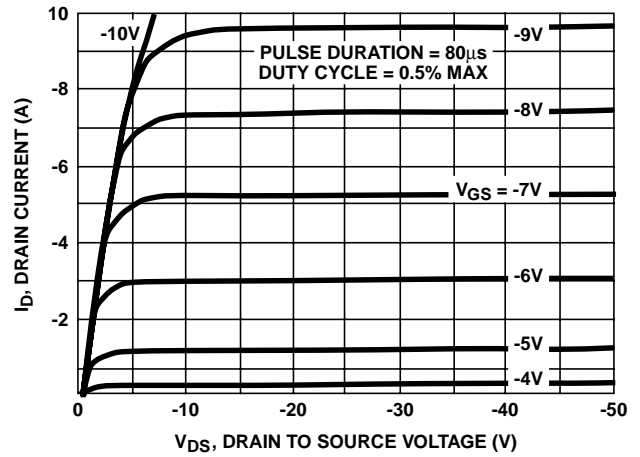


FIGURE 5. OUTPUT CHARACTERISTICS

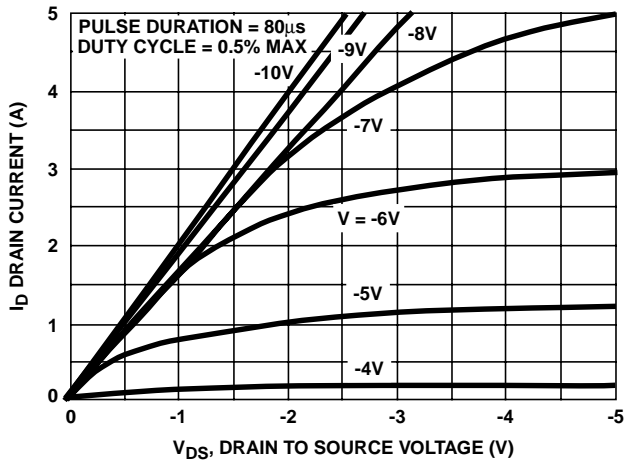


FIGURE 6. SATURATION CHARACTERISTICS

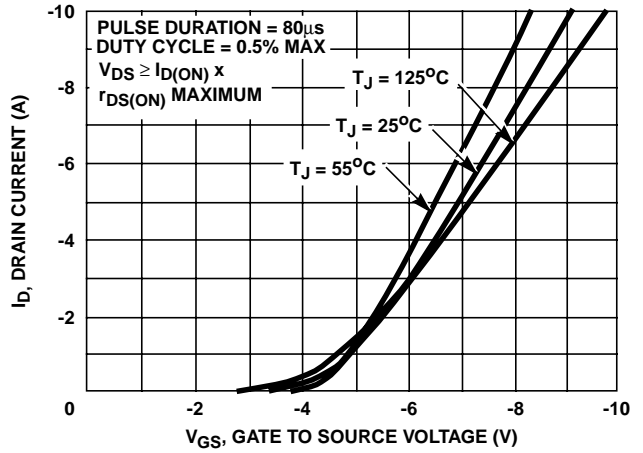


FIGURE 7. TRANSFER CHARACTERISTICS

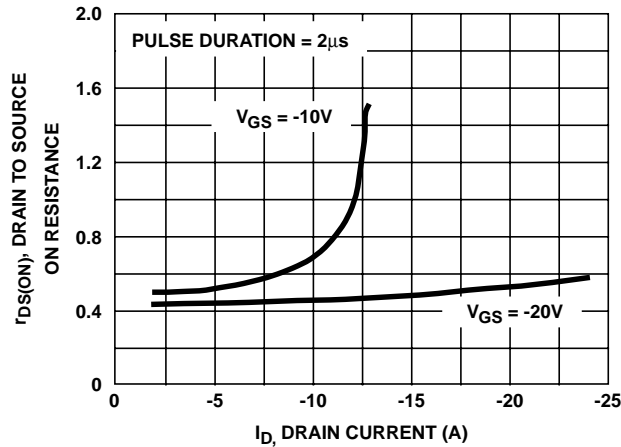


FIGURE 8. DRAIN TO SOURCE ON RESISTANCE vs GATE VOLTAGE AND DRAIN CURRENT

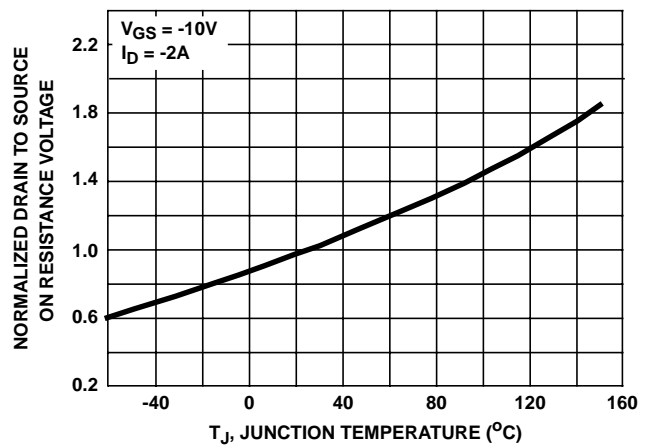


FIGURE 9. NORMALIZED DRAIN TO SOURCE ON RESISTANCE vs JUNCTION TEMPERATURE

Typical Performance Curves (Continued)

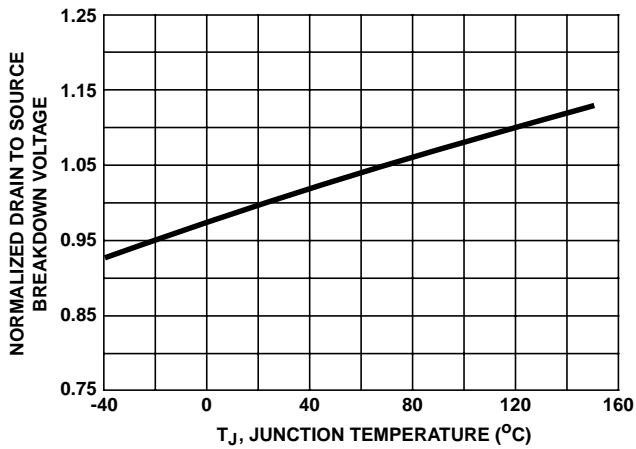


FIGURE 10. NORMALIZED DRAIN TO SOURCE BREAKDOWN VOLTAGE vs JUNCTION TEMPERATURE

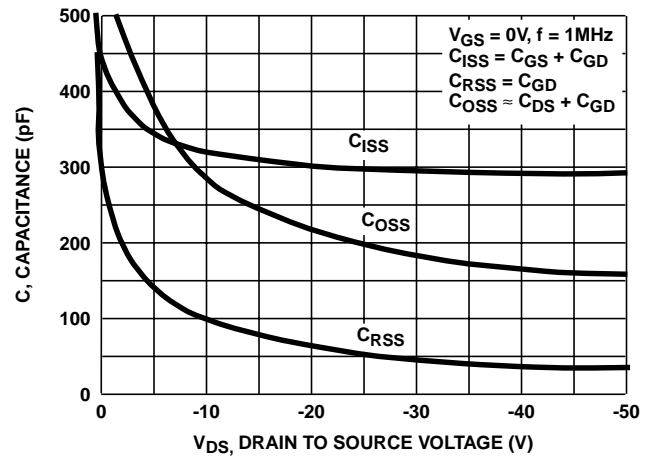


FIGURE 11. CAPACITANCE vs DRAIN TO SOURCE VOLTAGE

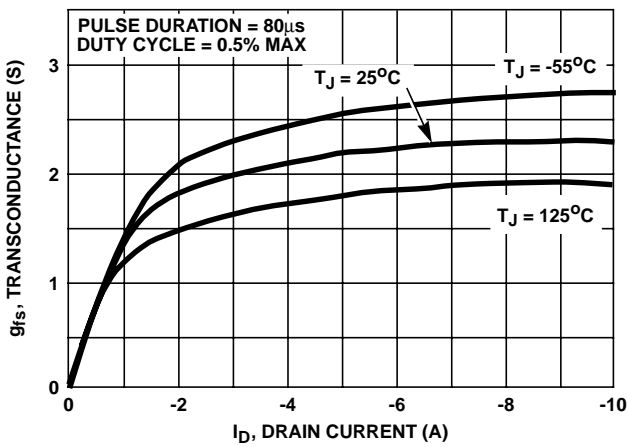


FIGURE 12. TRANSCONDUCTANCE vs DRAIN CURRENT

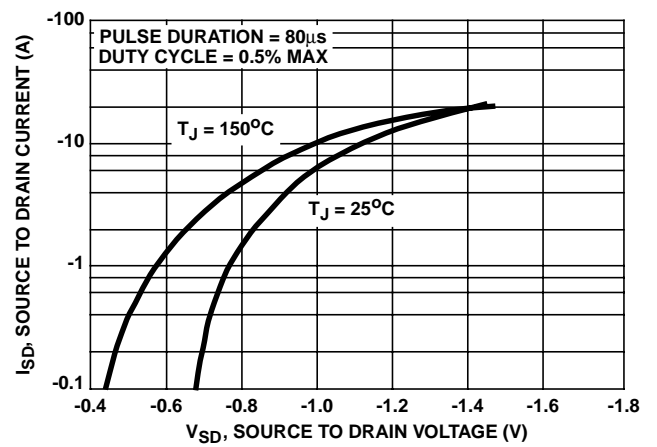


FIGURE 13. SOURCE TO DRAIN DIODE VOLTAGE

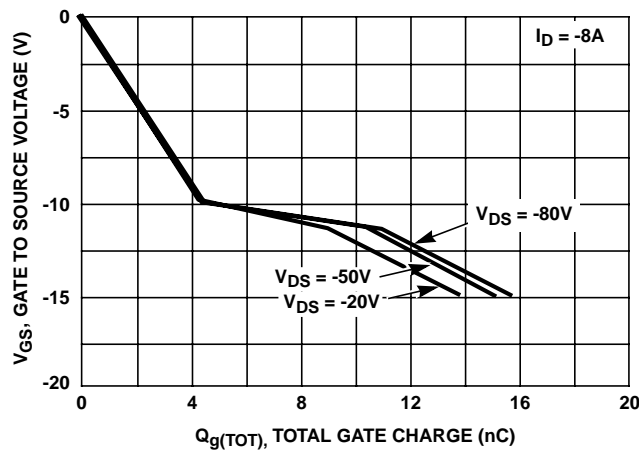


FIGURE 14. GATE TO SOURCE VOLTAGE vs GATE CHARGE

Test Circuits and Waveforms

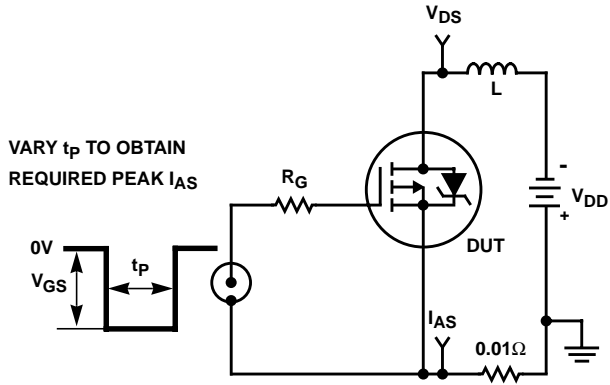


FIGURE 15. UNCLAMPED ENERGY TEST CIRCUIT

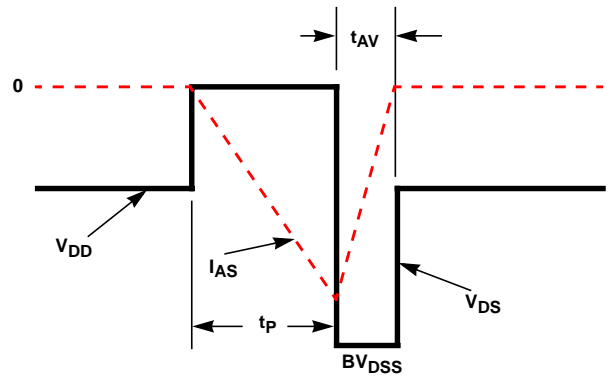


FIGURE 16. UNCLAMPED ENERGY WAVEFORMS

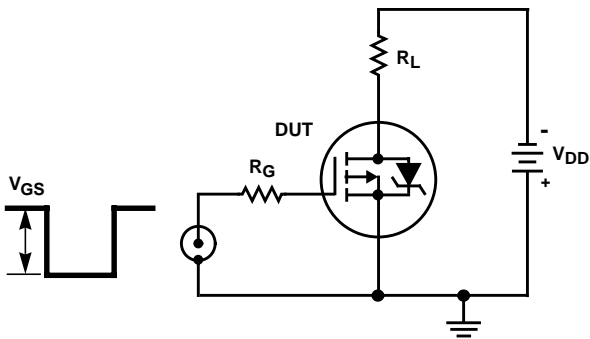


FIGURE 17. SWITCHING TIME TEST CIRCUIT

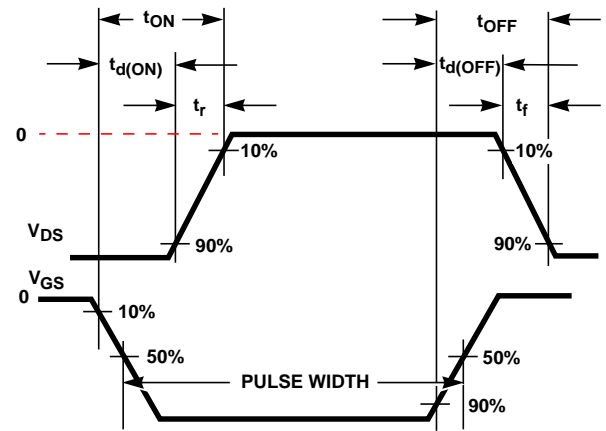


FIGURE 18. RESISTIVE SWITCHING WAVEFORMS

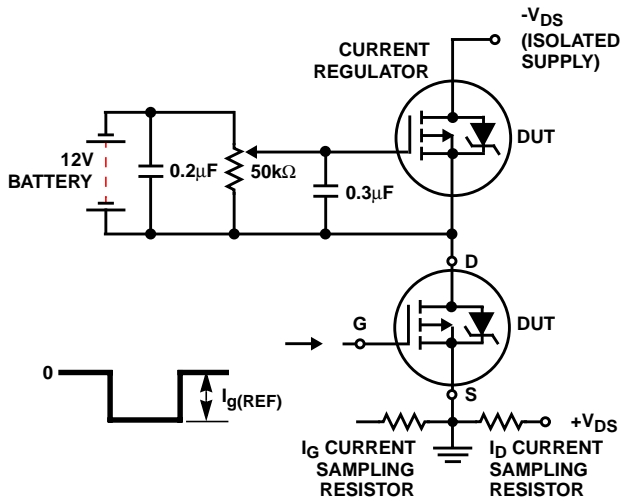


FIGURE 19. GATE CHARGE TEST CIRCUIT

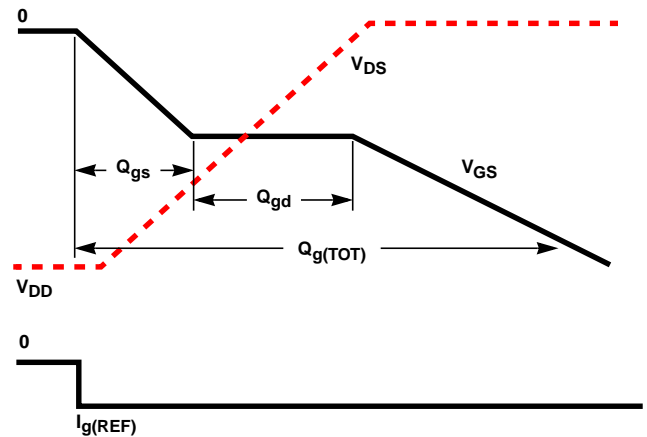


FIGURE 20. GATE CHARGE WAVEFORMS

All Intersil semiconductor products are manufactured, assembled and tested under **ISO9000** quality systems certification.

*Intersil semiconductor products are sold by description only. Intersil Corporation reserves the right to make changes in circuit design and/or specifications at any time without notice. Accordingly, the reader is cautioned to verify that data sheets are current before placing orders. Information furnished by Intersil is believed to be accurate and reliable. However, no responsibility is assumed by Intersil or its subsidiaries for its use; nor for any infringements of patents or other rights of third parties which may result from its use. No license is granted by implication or otherwise under any patent or patent rights of Intersil or its subsidiaries.*

For information regarding Intersil Corporation and its products, see web site <http://www.intersil.com>

### **Sales Office Headquarters**

#### **NORTH AMERICA**

Intersil Corporation  
P. O. Box 883, Mail Stop 53-204  
Melbourne, FL 32902  
TEL: (407) 724-7000  
FAX: (407) 724-7240

#### **EUROPE**

Intersil SA  
Mercure Center  
100, Rue de la Fusee  
1130 Brussels, Belgium  
TEL: (32) 2.724.2111  
FAX: (32) 2.724.22.05

#### **ASIA**

Intersil (Taiwan) Ltd.  
7F-6, No. 101 Fu Hsing North Road  
Taipei, Taiwan  
Republic of China  
TEL: (886) 2 2716 9310  
FAX: (886) 2 2715 3029