

FEATURES

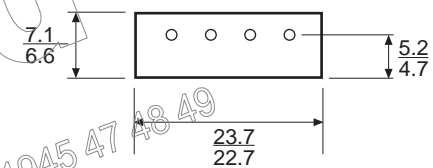
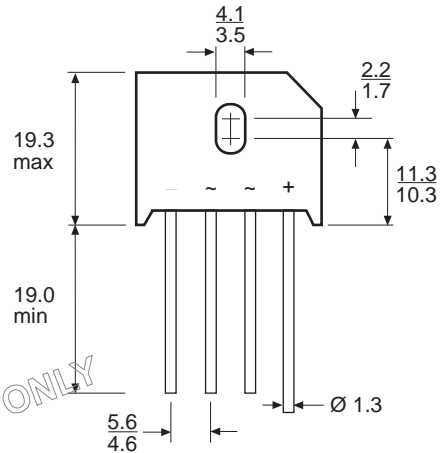
- Plastic package has Underwriters Laboratory flammability classification 94V-0
- Low leakage.
- Surge overload rating - 250 amperes peak.
- Ideal for printed circuit boards.
- Exceeds environmental standards of MIL - STD - 19500.

MECHANICAL DATA

- Case** : Reliable low cost construction utilizing moulded plastic technique results in inexpensive product.
- Terminals:** Leads, solderable per MIL-STD-202, Method 208.
- Polarity** : Polarity symbols printed on body.
- Weight** : 0.3 ounce, 8.0 grams.

VOLTAGE RANGE
50 to 1000 Volts PRV

CURRENT
8.0 Amperes



Dimensions in millimetres

MAXIMUM RATINGS AND ELECTRICAL CHARACTERISTICS

Ratings at 25°C ambient temperature unless otherwise specified. Single phase, half wave, 60 Hz, resistive or inductive load. For capacitive load, derate current by 20%.

		KBU8A	KBU8B	KBU8D	KBU8G	KBU8J	KBU8K	KBU8M	
Maximum Recurrent Peak Reverse Voltage	V _{RRM}	50	100	200	400	600	800	1000	V
Maximum Bridge Input Voltage RMS	V _{RMS}	35	70	140	280	420	560	700	V
Maximum DC Blocking Voltage	V _{DC}	50	100	200	400	600	800	1000	V
Maximum Average Forward Current at T _A = 65°C* / T _C = 100°C** (see Fig 2)	I _{F(AV)}	8.0							A
Peak Forward Surge Current, 8.3 ms single half sine - wave superimposed on rated load (see Fig 1)	I _{FSM}	250							A
Maximum Forward Voltage Drop per Element at 4.0A (see Fig 3)	V _F	1.0							V
Maximum Reverse Current at Rated DC Blocking Voltage per Element (see Fig 4)	I _R	10.0 1.0							µA mA
Operating Temperature Range	T _J	- 55 to + 125							°C
Storage Temperature Range	T _{STG}	- 55 to + 150							°C

Notes * Unit mounted on metal heatsink.
** Unit mounted on P.C. board.

RATING AND CHARACTERISTIC CURVES KBU8 SERIES

FIG 1 : MAXIMUM NON-REPETITIVE SURGE CURRENT PER ELEMENT

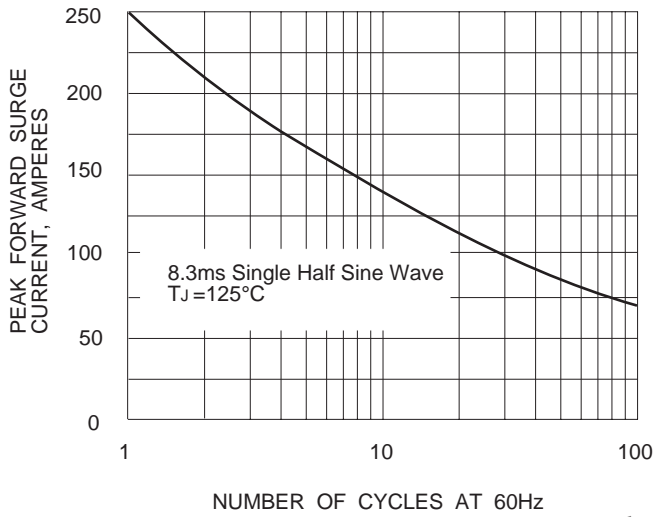


FIG 2 : DERATING CURVE FOR RECTIFIED OUTPUT CURRENT

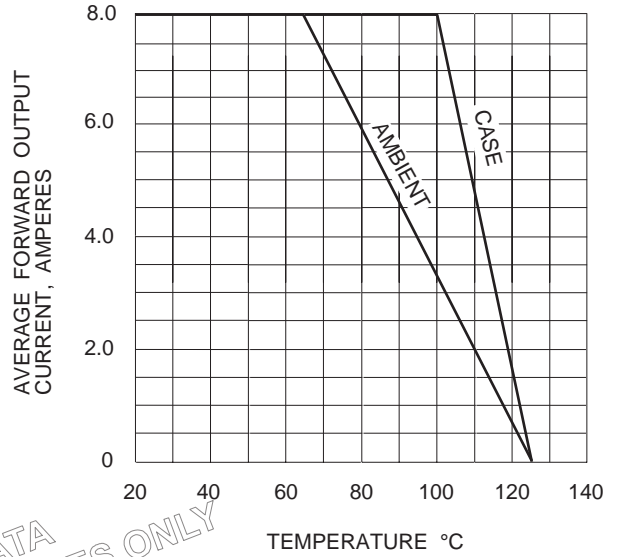


FIG 3 : TYPICAL FORWARD CHARACTERISTICS PER ELEMENT

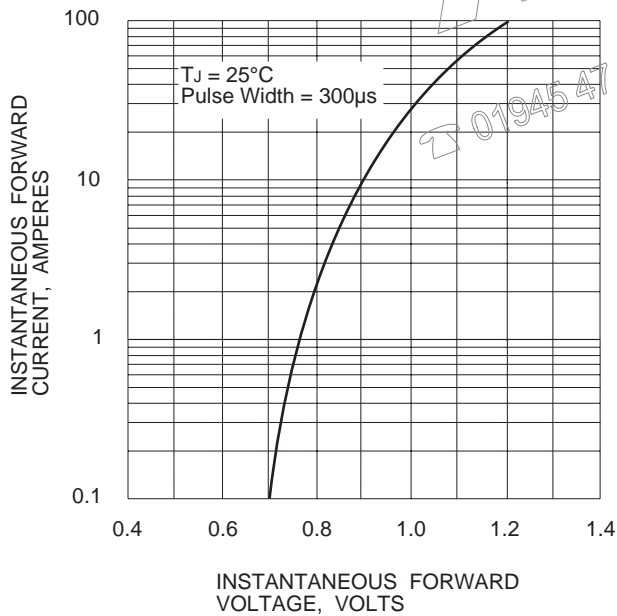
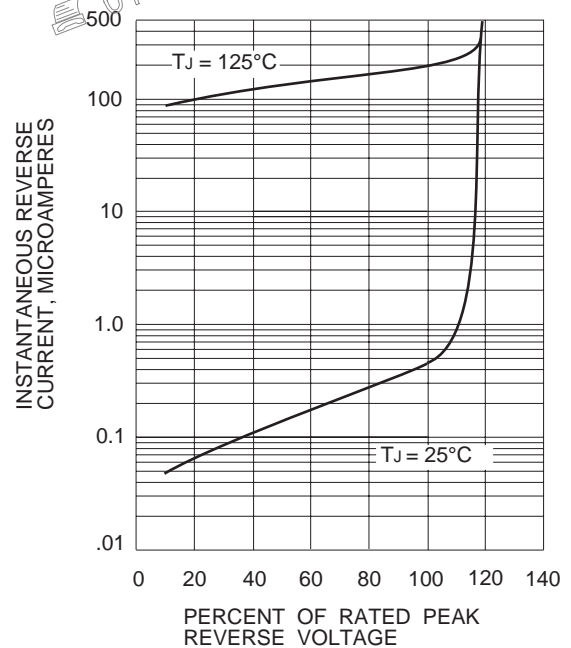


FIG 4 : TYPICAL REVERSE CHARACTERISTICS PER ELEMENT



TECHNICAL DATA
FOR REFERENCE PURPOSES ONLY

Anglia

01945 47 47 47

01945 47 49