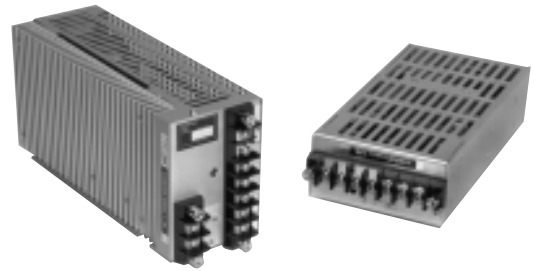


International Power Sources, Inc.

260 Hopping Brook Road
 Holliston, Massachusetts 01746
 Tel. (508) 429-4440 Fax (800) 226-2100
<http://www.intlpower.com>

AC/DC Power Supplies



100 and 150 WATT

FEATURES

- Efficiency to 88%
- Adjustable Outputs
- Soft Start
- Internal EMI/RFI Filter
- Remote Sense
- Remote Disable
- Input/Output Protection
- Compact Size/Light Weight

ORDERING GUIDE: Series/Input Code/Output Code

Example: ACE 102 - 100 Watt Series, 110VAC Input, 12 Volt Output @ 9 AMPS

| Series | Output |
|--------|-----------|
| ACE | 100 Watts |
| ACF | 150 Watts |

| Input Code | Input Range |
|------------|-------------------------------------|
| 1 | 90-132 VAC, 110-175 VDC (47-440 Hz) |
| 2 | 180-264 VAC, (47-440 Hz) |

| Output Code |
|---------------------|
| From Chart Below |

| SERIES | | ACE | ACF |
|-------------|-------------------|----------------|----------------|
| OUTPUT CODE | OUTPUT VOLTAGE(S) | OUTPUT CURRENT | OUTPUT CURRENT |
| 01 | 5VDC | 20A | 30A |
| 02 | 12VDC | 9A | 14A |
| 03 | 15VDC | 7A | 11A |
| 04 | 24VDC | 5A | 7A |
| 10 | 48VDC | 2A | 4A |

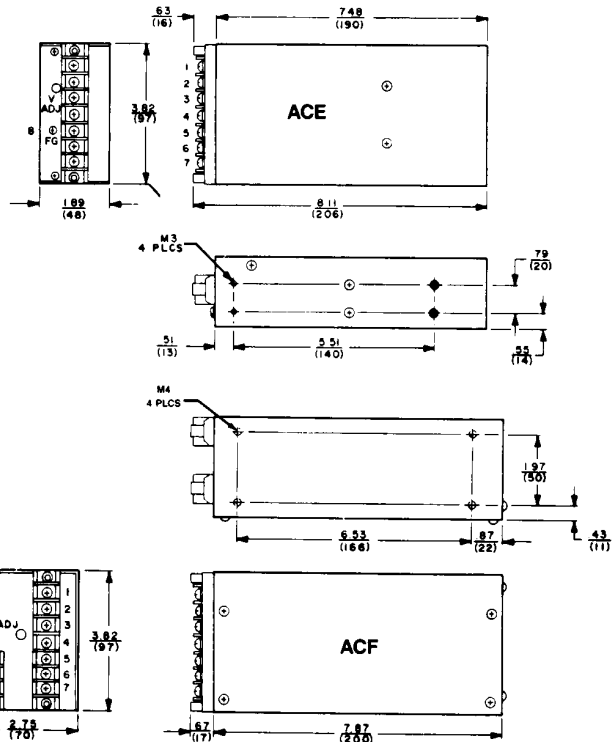
** For 110/220 selectable inputs add suffix "S" to part number.

ELECTRICAL SPECIFICATIONS

All specifications typical at nominal line, full load and 25°C

| | ACE | ACF |
|-------------------------------------|----------------------------------|----------|
| OUTPUT SPECIFICATIONS | | |
| Voltage Adjustment | ±10% | |
| Line Regulation | .8% | |
| Load Regulation | .9% | |
| Ripple and Noise (DC-100MHz) | 1% of VOUT & 50mV p-p | |
| Temperature Coefficient | .03%/°C | |
| Oversvoltage Protection | Output Shutdown | |
| Short Circuit Protection | Foldback Current Limit | |
| Remote Sense | Standard | |
| Remote Disable | Connect RC to (-)S | |
| Rise Time | 100ms Max. | |
| Hold Up Time | 20msec. | |
| INPUT SPECIFICATIONS | | |
| Input Voltage Range | See Table | |
| Input Filter | FCC Class A/EMI/RFI | |
| Input Inrush Current | 20 Amps Max | |
| Input Protection | Input Fuse | |
| GENERAL SPECIFICATIONS | | |
| Switching Frequency | 80 kHz Typical | |
| Efficiency | 85% Typical | |
| Isolation (Input-Output-Case) | 500VDC (50Mohm) | |
| Weight | 1.7 lbs | 3.1 lbs. |
| ENVIRONMENTAL SPECIFICATIONS | | |
| Operating Temperature | 0°C to 50°C (to 60°C @ 50% Load) | |
| Storage Temperature | -40°C to 85°C | |
| Humidity | 85% | |
| Vibration | (5-10Hz) 10mm, (10-55Hz) 2G | |
| Shock | 30G | |
| Safety | UL 1012 Compliance | |

| TERMINAL | ACE | ACF |
|----------|------------------|---------------|
| 1 | +Vout | +Vout |
| 2 | +Vout | +Vout |
| 3 | -Vout | +S |
| 4 | -Vout | -S |
| 5 | Filter Gnd (LFG) | -Vout |
| 6 | ACin | -Vout |
| 7 | ACin | RC |
| 8 | Case Gnd (FG) | ACin |
| 9 | — | ACin |
| 10 | — | Case Gnd (FG) |



Specifications subject to change