

## General Description

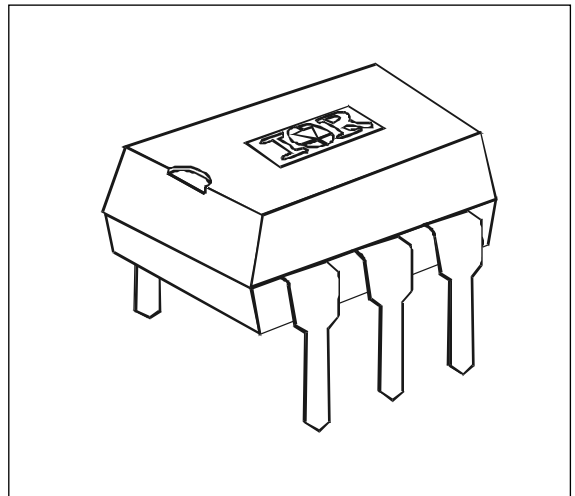
The PVT312 Photovoltaic Relay is a single-pole, normally open solid-state relay that can replace electromechanical relays in many applications. It utilizes International Rectifier's proprietary HEXFET power MOSFET as the output switch, driven by an integrated circuit photovoltaic generator of novel construction. The output switch is controlled by radiation from a GaAlAs light emitting diode (LED) which is optically isolated from the photovoltaic generator.

This SSR is specifically designed for telecom applications. PVT312L employs an active current-limiting circuitry enabling it to withstand current surge transients.

PVT312 Relays are packaged in a 6-pin, molded DIP package with either through-hole or surface mount ( "gull-wing") terminals. It is available in standard plastic shipping tubes or on tape-and-reel. Please refer to the Part Identification information opposite.

## PVT312L Features

- HEXFET Power MOSFET output ■
- Bounce-free operation ■
- 4,000 V<sub>RMS</sub> I/O isolation ■
- Load current limiting ■
- Linear AC/DC operation ■
- Solid-State reliability ■
- UL recognized ■



## Applications

- On/Off Hook switch
- Dial-Out relay
- Ring injection relay
- Ground start
- General switching

## Part Identification

PVT312L	current limit, through-hole
PVT312LS	current limit, surface-mount
PVT312LS-T	surface-mount, tape and reel
PVT312	no current limit, through-hole
PVT312S	no current limit, surface-mount
PVT312S-T	no current limit, surface-mount, tape and reel

# Series PVT312 — HEXFET® Photovoltaic Relay

International  
**IOR** Rectifier

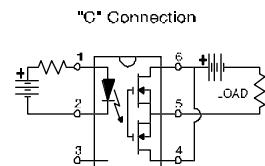
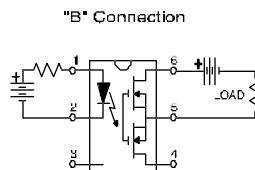
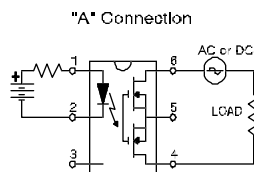
Electrical Specifications ( $-40^{\circ}\text{C} \leq T_A \leq +85^{\circ}\text{C}$  unless otherwise specified)

INPUT CHARACTERISTICS	Part Numbers		Units
	PVT312L	PVT312	
Minimum Control Current (see figures 1 and 2)	2.0		mA
Maximum Control Current for Off-State Resistance @ $T_A=+25^{\circ}\text{C}$	0.4		mA
Control Current Range (Caution: current limit input LED, see figure 6)	2.0 to 25		mA
Maximum Reverse Voltage	7.0		V

OUTPUT CHARACTERISTICS	PVT312L		PVT312	
Operating Voltage Range	0 to $\pm 250$			$V_{\text{DC or AC peak}}$
Maximum Load Current @ $T_A=+40^{\circ}\text{C}$ , 5mA Control (see figures 1 and 2)				
A Connection	170	190		mA (AC or DC)
B Connection	190	210		mA (DC)
C Connection	300	320		mA (DC)
Maximum On-State Resistance @ $T_A=+25^{\circ}\text{C}$ for 50mA pulsed load 5mA Control (see figure 4)				
A Connection	15	10		$\Omega$
B Connection	8	5.5		$\Omega$
C Connection	4.25	3		$\Omega$
Maximum Off-State Leakage @ $T_A=+25^{\circ}\text{C}$ , $\pm 250\text{V}$ (see figure 5)	1.0			$\mu\text{A}$
Current Limit @ $T_A=+25^{\circ}\text{C}$ , 5mA Control				
Connection:	A	C		
Minimum	190	330	n/a	mA
Maximum	300	560	n/a	mA
Maximum Turn-On Time @ $T_A=+25^{\circ}\text{C}$ (see figure 7) for 50mA, 100 $V_{\text{DC}}$ load, 5mA Control	3.0			ms
Maximum Turn-Off Time @ $T_A=+25^{\circ}\text{C}$ (See Fig. 6) For 50mA, 100 $V_{\text{DC}}$ load, 5mA Control	0.5			ms
Maximum Output Capacitance @ 50V <sub>DC</sub>	50			pF

GENERAL CHARACTERISTICS	ALL MODELS		
Minimum Dielectric Strength, Input-Output	4000		$V_{\text{RMS}}$
Minimum Insulation Resistance, Input-Output @ $T_A=+25^{\circ}\text{C}$ , 50%RH, 100V <sub>DC</sub>	$10^{12}$		$\Omega$
Maximum Capacitance, Input-Output	1.0		pF
Maximum Pin Soldering Temperature (10 seconds maximum)	+260		$^{\circ}\text{C}$
Ambient Temperature Range:	Operating	-40 to +85	$^{\circ}\text{C}$
	Storage	-40 to +100	

## Connection Diagrams



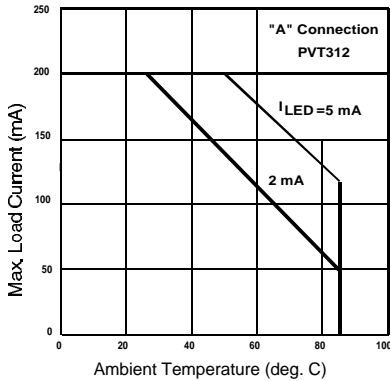


Figure 1. Typical Current Derating Curves

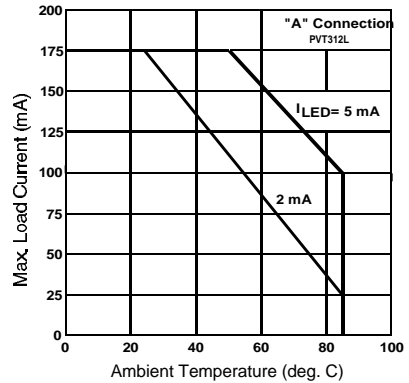


Figure 2. Typical Current Derating Curves

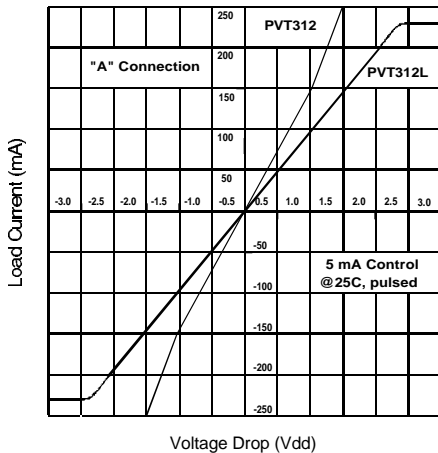


Figure 3. Linearity Characteristics

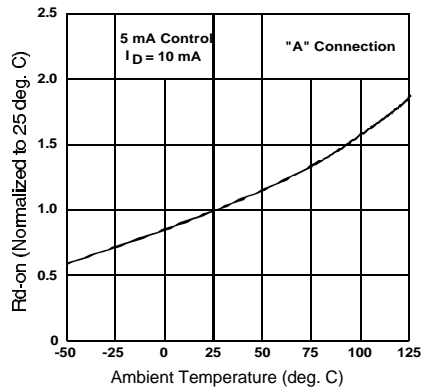


Figure 4. Typical Normalized On-Resistance

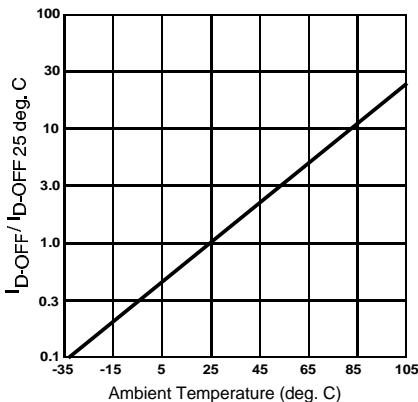


Figure 5. Typical Normalized Off-State Leakage

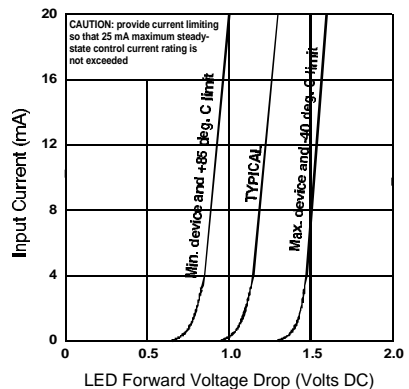


Figure 6. Input Characteristics (Current Controlled)

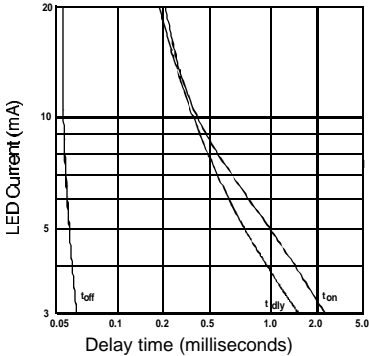


Figure 7. Typical Delay Times

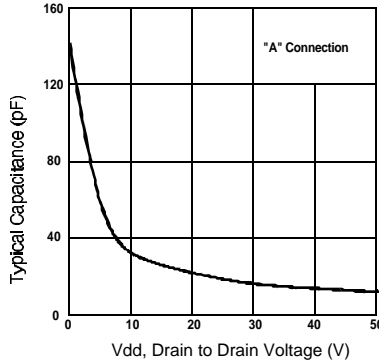


Figure 9. Typical Output Capacitance

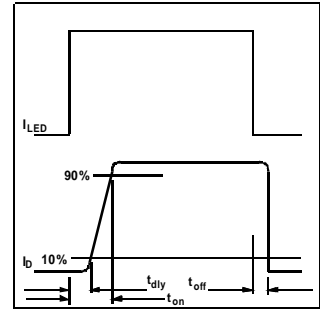
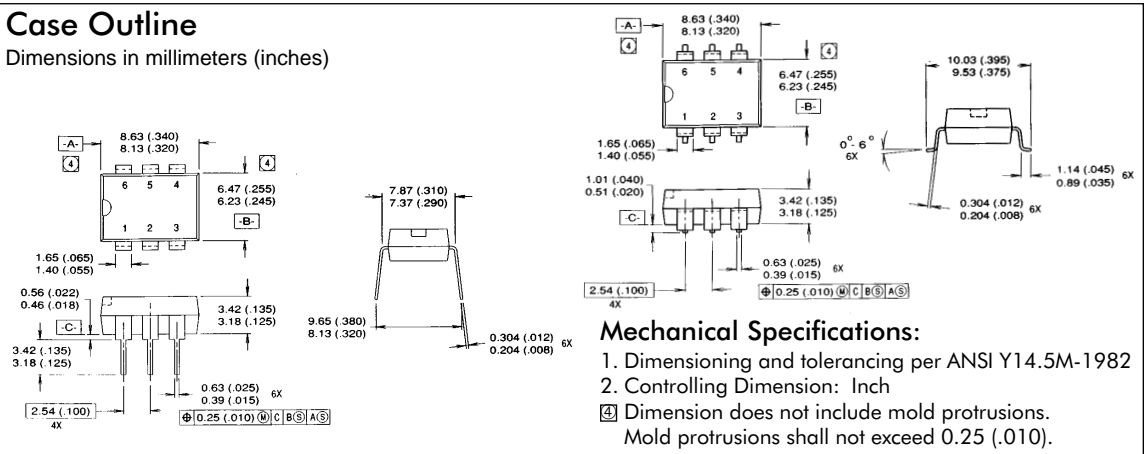


Figure 8. Delay Time Definitions

**Case Outline**

Dimensions in millimeters (inches)



**Mechanical Specifications:**

1. Dimensioning and tolerancing per ANSI Y14.5M-1982
2. Controlling Dimension: Inch
- ④ Dimension does not include mold protrusions. Mold protrusions shall not exceed 0.25 (.010).