

Series PVU414

Microelectronic
Power IC Relay

Single Pole, Normally Open

0-400V, 140mA AC/DC

HEXFET® POWER MOSFET PHOTOVOLTAIC RELAY

General Description

The PVU414 Series Photovoltaic Relay is a single-pole, normally open solid-state relay that can replace electromechanical relays in many applications. It utilizes International Rectifier's proprietary HEXFET power MOSFET as the output switch, driven by an integrated circuit photovoltaic generator of novel construction. The output switch is controlled by radiation from a GaAlAs light emitting diode (LED) which is optically isolated from the photovoltaic generator.

The PVU414 is ideally suited for instrumentation, multiplexing, scanning and data acquisition applications. It offers high operating speed, low thermal offset (EMF) voltage, low and stable on-state resistance and high off-state resistance.

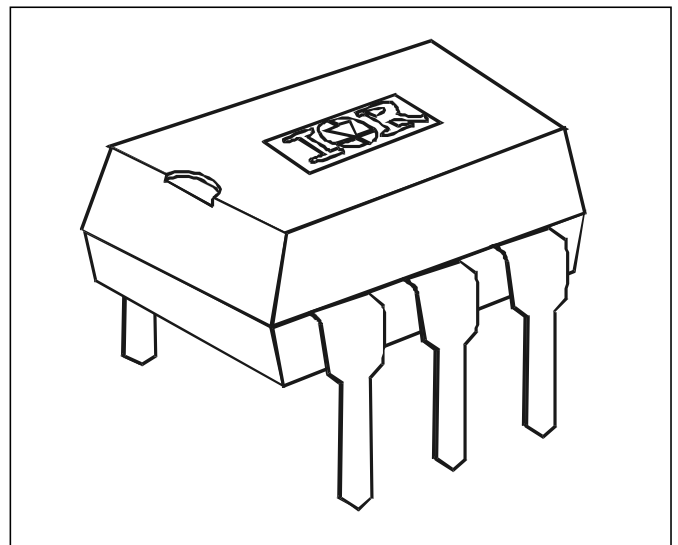
The PVU414 relay is packaged in a 6-pin, molded DIP package with either thru-hole or "gull-wing" surface mount terminals. It is available in standard plastic shipping tubes or on tape-and-reel. Refer to Part Identification information.

Applications

- Multiplexing ■
- Scanning ■
- Multichannel Sampling ■
- Data Acquisition ■
- Signal Level Switching ■
- Instrumentation and Measurement ■

PVU414 Features

- HEXFET output ■
- Bounce-free operation ■
- High operating speed ■
- High off-state resistance ■
- 0.2 μ V thermal offset voltage ■
- Linear AC/DC operation ■
- 4,000 V_{RMS} I/O isolation ■
- Solid-state reliability ■
- UL and CSA certifications pending ■



Part Identification

PVU414	thru-hole
PVU414S	SMT
PVU414S-T	SMT, T&R

(HEXFET is the registered trademark for International Rectifier's power MOSFETs)

Series PVU414

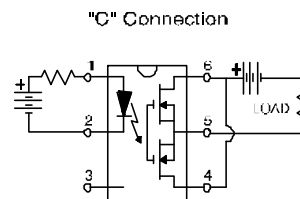
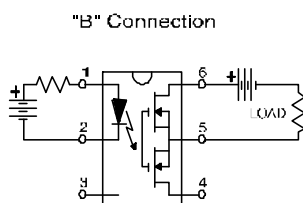
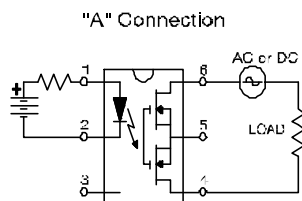
Electrical Specifications (-40°C ≤ T_A ≤ +85°C unless otherwise specified)

INPUT CHARACTERISTICS	Limits	Units
Min. Control Current (See Fig. 1)	3.0	mA
Max. Control Current for Off-State Resistance @T _A =+25°C	0.4	mA
Control Current Range (Caution: current limit input LED, See Fig.6)	3.0 to 25	mA
Max. Reverse Voltage	7.0	V

OUTPUT CHARACTERISTICS	Limits	Units	
Operating Voltage Range	0 to ±400	V(DC or AC peak)	
Max. Load Current @T _A =+40°C 5mA Control (See Fig. 1)	'A' Connection 'B' Connection 'C' Connection	140 150 210	mA (AC or DC) mA (DC) mA (DC)
Max. On-State Resistance @T _A =+25°C For 50mA Pulsed Load, 5mA Control (See Fig.5)	'A' Connection 'B' Connection 'C' Connection	27 14 7	Ω Ω Ω
Min. Off-State Resistance @T _A =+25°C, ±320V (See Fig. 5)		10 ¹⁰	Ω
Max. Turn-On Time @T _A =+25°C (See Fig. 7) For 50mA, 100 V _{DC} Load, 5mA Control		500	μs
Max. Turn-Off Time @T _A =+25°C (See Fig. 7) For 50mA, 100 V _{DC} Load, 5mA Control		200	μs
Max. Thermal Offset Voltage @ 5mA Control		0.2	μV
Max. Output Capacitance @ 50V _{DC} (See Fig. 2)		12	pF

GENERAL CHARACTERISTICS	Limits	Units	
Min. Dielectric Strength, Input-Output	4000	V _{RMS}	
Min. Insulation Resistance, Input-Output @T _A =+25°C, 50%RH, 100V _{DC}	10 ¹²	Ω	
Max. Capacitance, Input-Output	1.0	pF	
Max. Pin Soldering Temperature (10 seconds max.)	+260	°C	
Ambient Temperature Range:	Operating Storage	-40 to +85 -40 to +100	°C °C

Connection Diagrams



Series PVU414

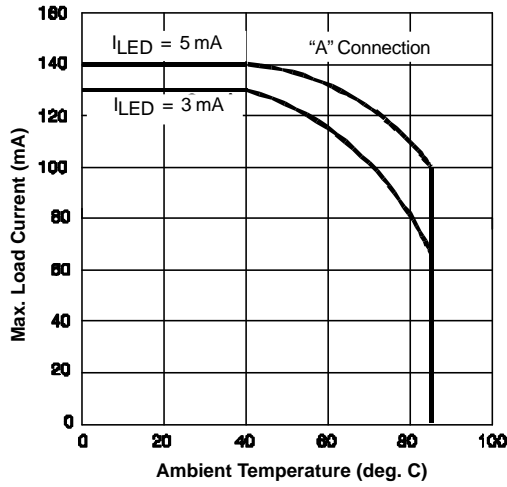


Figure 1. Current Derating Curves

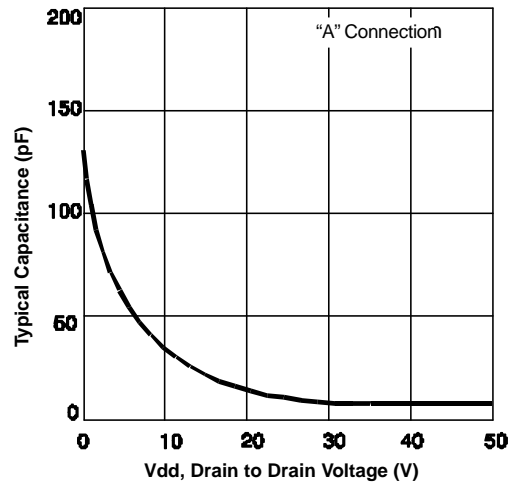


Figure 2. Typical Output Capacitance

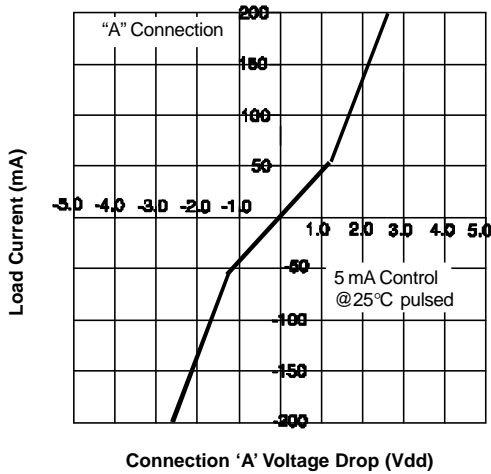


Figure 3. Linearity Characteristics

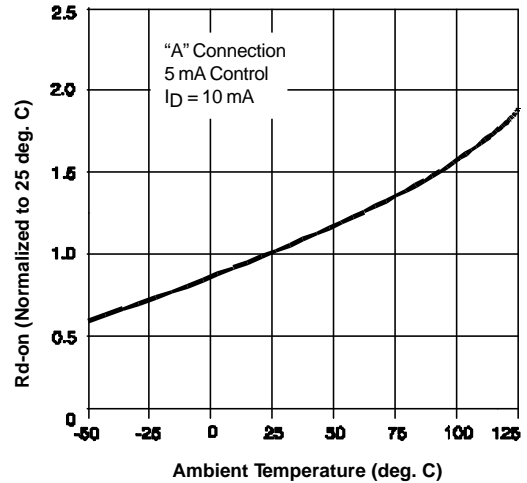


Figure 4. Typical Normalized On-Resistance

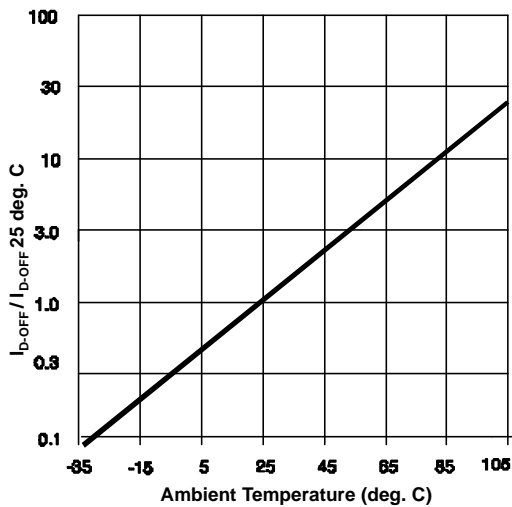


Figure 5. Typical Normalized Off-State Leakage

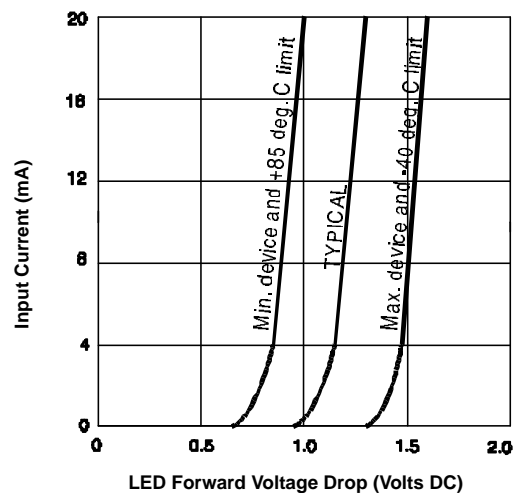


Figure 6. Input Characteristics (Current Controlled)

Series PVU414

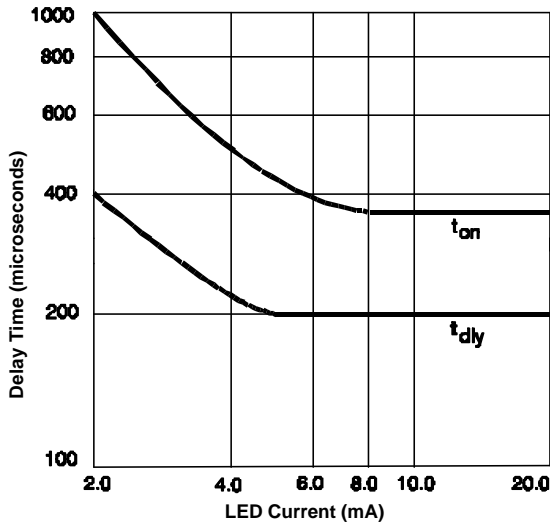


Figure 7. Typical Delay Times

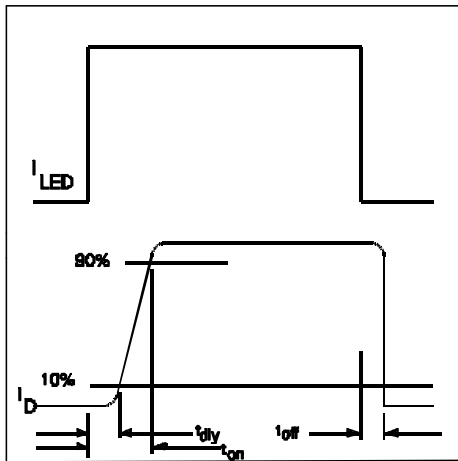
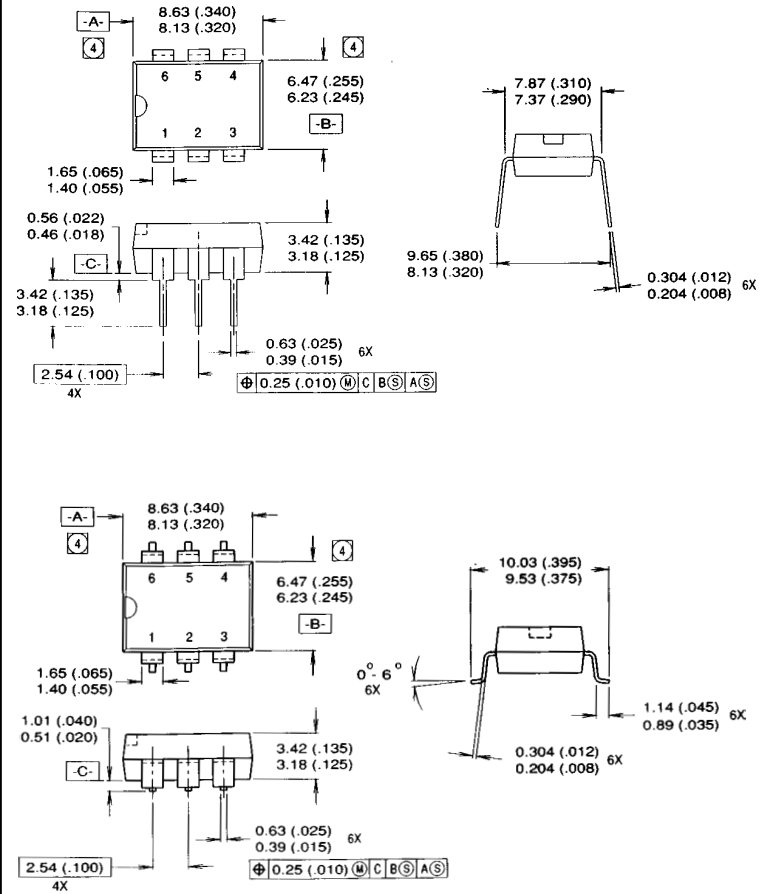


Figure 8. Delay Time Definitions

Mechanical Specifications

(Dimensions in millimeters (inches))



1. DIMENSIONING AND TOLERANCING PER ANSI Y14.5M-1982
2. CONTROLLING DIMENSION: INCH
- ④ DIMENSION DOES NOT INCLUDE MOLD PROTRUSIONS. MOLD PROTRUSIONS SHALL NOT EXCEED 0.25 (.010).

International
IR Rectifier

WORLD HEADQUARTERS: 233 Kansas St., El Segundo, California 90245, Tel: (310) 322 3331

EUROPEAN HEADQUARTERS: Hurst Green, Oxted, Surrey RH8 9BB, UK Tel: ++ 44 1883 732020

IR CANADA: 7321 Victoria Park Ave., Suite 201, Markham, Ontario L3R 2Z8, Tel: (905) 475 1897

IR GERMANY: Saalburgstrasse 157, 61350 Bad Homburg Tel: ++ 49 6172 96590

IR ITALY: Via Liguria 49, 10071 Borgaro, Torino Tel: ++ 39 11 451 0111

IR FAR EAST: K&H Bldg., 2F, 3-30-4 Nishi-Ikeburo 3-Chome, Toshima-Ki, Tokyo Japan 171 Tel: 81 3 3983 0086

IR SOUTHEAST ASIA: 315 Outram Road, #10-02 Tan Boon Liat Building, Singapore 0316 Tel: 65 221 8371

<http://www.irf.com/>

Data and specifications subject to change without notice.

8/96