



KBP200G THRU KBP210G

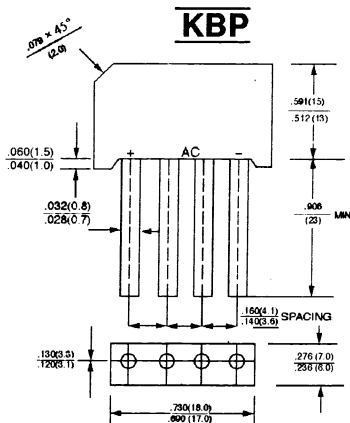
SINGLE PHASE 2.0 AMPS. GLASS PASSILATED BRIDGE RECTIFIERS



FEATURES

- * Ideal for printed circuit board
- * Reliable low cost construction
- * High Surge Current Capability
- * Small size, simple installation

VOLTAGE RANGE
50 to 1000 Volts
CURRENT
2.0 Amperes



Dimensions in inches and (millimeters)

MAXIMUM RATINGS AND ELECTRICAL CHARACTERISTICS

Rating at 25°C ambient temperature unless otherwise specified.

Single phase, half wave, 60 Hz, resistive or inductive load.

For capacitive load, derate current by 20%

TYPE NUMBER	SYMBOLS	KBP 200G	KBP 201G	KBP 202G	KBP 204G	KBP 206G	KBP 208G	KBP 210G	UNITS
Maximum Recurrent Peak Reverse Voltage	V_{RRM}	50	100	200	400	600	800	1000	V
Maximum RMS Bridge Input Voltage	V_{RMS}	35	70	140	280	420	560	700	V
Maximum D. C Blocking Voltage	V_{DC}	50	100	200	400	600	800	1000	V
Maximum Average Forward Rectified Current @ $T_A = 50^\circ C$	$I_{F(AV)}$	2.0							A
Peak Forward Surge Current, 8.3 ms single half sine-wave superimposed on rated load (JEDEC method)	I_{FSM}	50							A
Maximum Forward Voltage Drop per element @ 1.0A (Note)	V_F	1.10							V
Maximum Reverse Current at Rated @ $T_A = 25^\circ C$ D. C. Blocking Voltage per element @ $T_A = 125^\circ C$	I_R	10 500							μA μA
Operating Temperature Range	T_J	-55 to +150							$^\circ C$
Storage Temperature Range	T_{STG}	-55 to +150							$^\circ C$

NOTE: Mounted on glass - epoxy P. C. B, Soldering land $\phi 3mm$.

RATINGS AND CHARACTERISTIC CURVES (KBP200G THRU KBP210G)

FIG.1 - MAXIMUM NON-REPETITIVE FORWARD SURGE CURRENT - PER ELEMENT

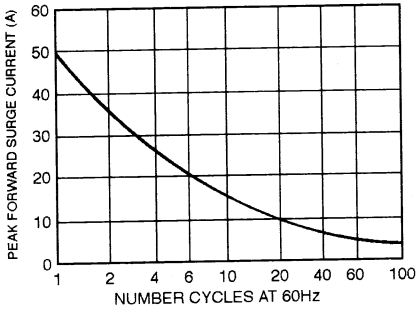


FIG.2 - TYPICAL FORWARD OUTPUT DERATING CURVE

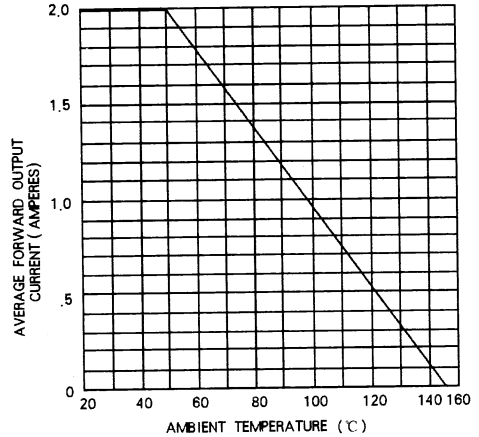


FIG.3 - TYPICAL INSTANTANEOUS FORWARD CHARACTERISTICS - PER ELEMENT

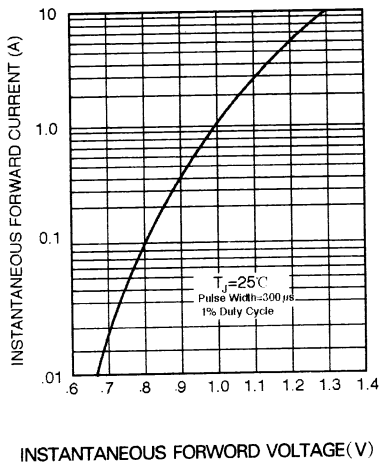


FIG.4 - TYPICAL REVERSE CHARACTERISTICS - PER ELEMENT

