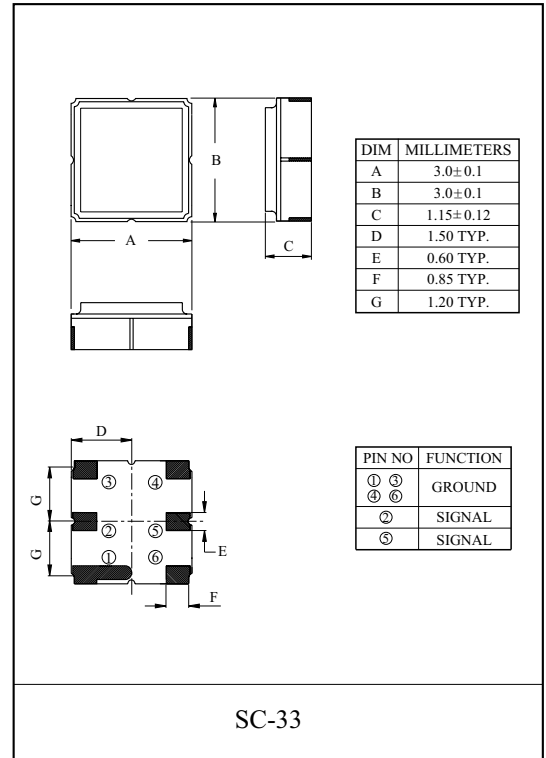


Band pass filters for TX of AMPS/TDMA/CDMA

- High stability and reliability with good performance and no adjustment.
- Wide and sharp pass band characteristics.
- Low insertion loss and deep stop band attenuation for interference.

MAXIMUM RATINGS

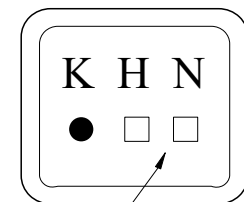
ITEM	SYMBOL	RATING	UNIT
Input Signal Level	IS_{max}	+15	dBm
DC Permissive Voltage	V_{DC}	5	V
Operating Temperature Range	T_{opr}	-30 ~ +85	°C
Storage Temperature Range	T_{stg}	-40 ~ +85	°C



ELECTRICAL CHARACTERISTICS (Ta=-30 to 85 °C)

ITEMS	SYMBOL	TEST CONDITION	MIN.	TYP.(25 °C)	MAX.	UNIT
Nominal Center Frequency	f_0	-	-	881.5	-	MHz
Bandwidth	BW_{3dB}	-	$f_0 \pm 12.5$	-	-	MHz
Insertion Loss	IL_{PASS}	$f_0 \pm 12.5MHz$	-	3.0	3.5	dB
Ripple Level	A_{RIP}	$f_0 \pm 12.5MHz$	-	1.0	2.0	dB
Rejection Level	IL_{STOP}	DC ~ 800MHz	25	30	-	dB
		800 ~ 849MHz	33	38	-	
		914 ~ 939MHz	20	33	-	
		939 ~ 1049MHz	30	34	-	
		1049 ~ 2000MHz	25	30	-	
Voltage Standing Wave Ratio	VSWR	$f_0 \pm 12.5MHz$	-	1.9	2.2	-
Input/Output Impedance	$Z_I(Z_O)$	-	-	50Ω	-	-

MARKING

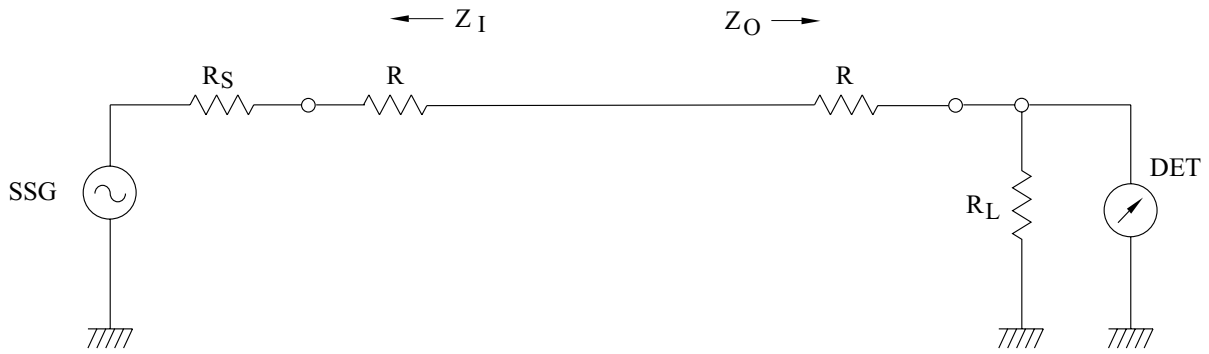


Lot No. _____

KF881FU

TEST CIRCUIT

REFERENCE LEVEL TEST CIRCUIT

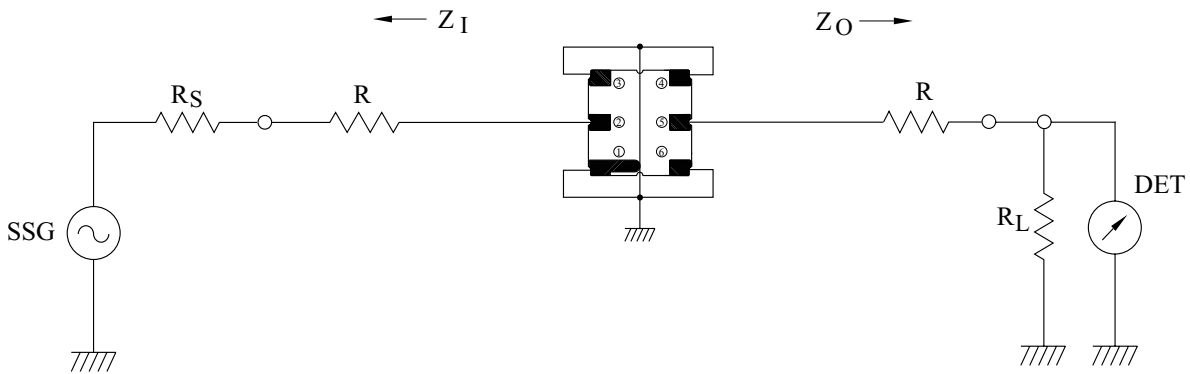


$R_S, R_L : 50 \Omega$ (Internal Impedance of Source and Load)

$R : 0 \Omega$

$$Z_I(Z_O) = R_S(R_L) + R$$

MEASUREMENT CIRCUIT



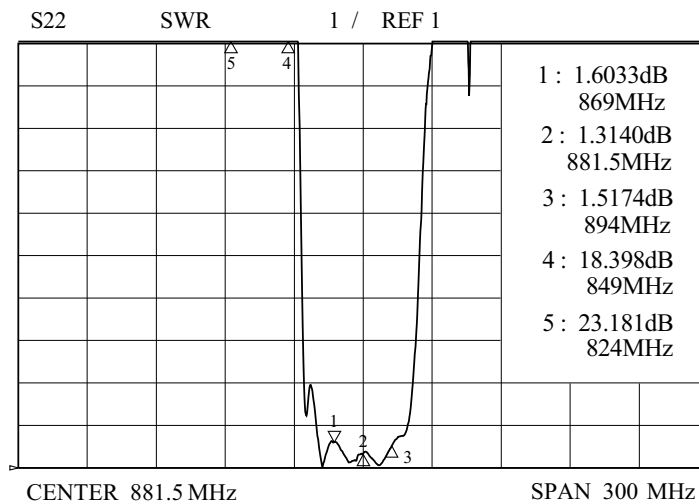
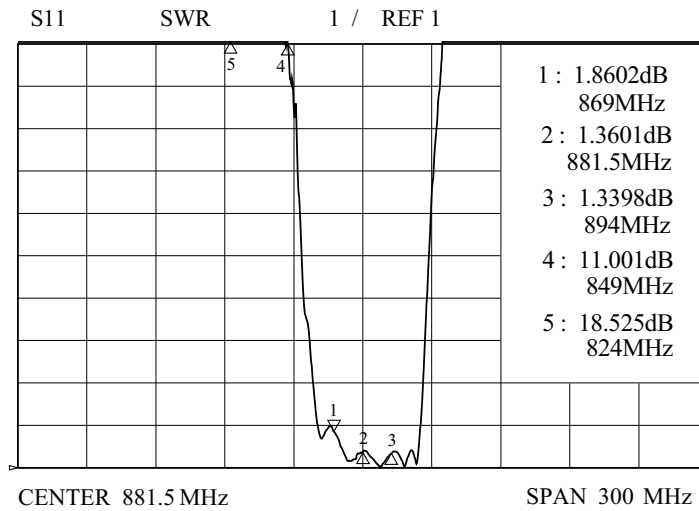
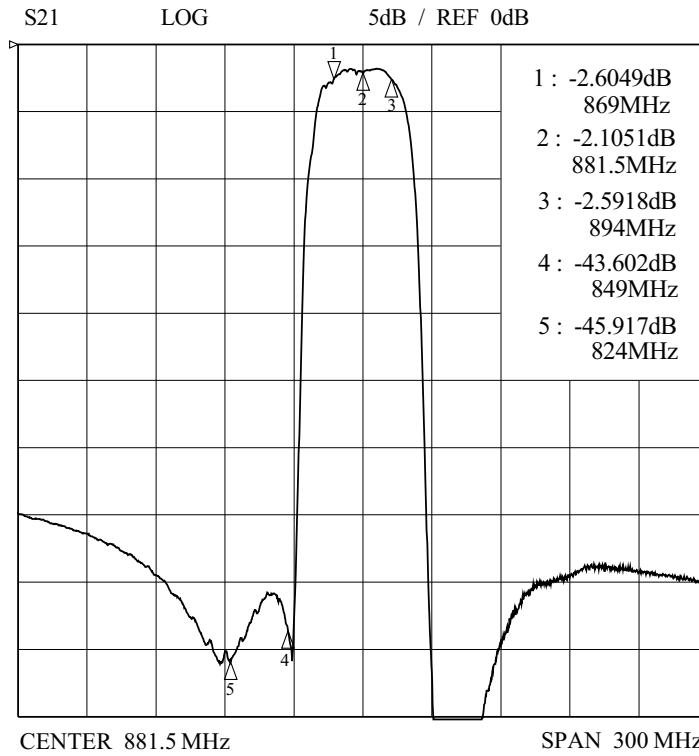
② : INPUT ①, ③, ④, ⑥ : GROUND ⑤ : OUTPUT

$R_S, R_L : 50 \Omega$ (Internal Impedance of Source and Load)

$R : 0 \Omega$

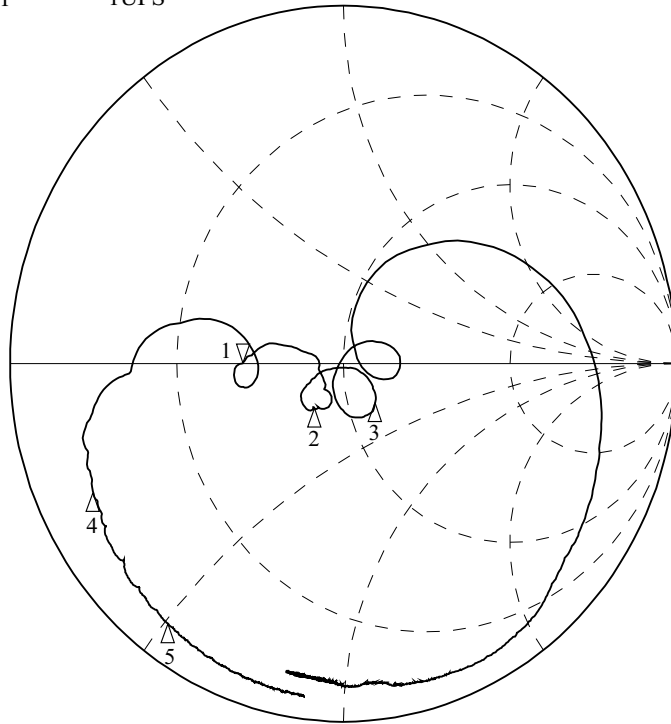
$$Z_I(Z_O) = R_S(R_L) + R$$

KF881FU



KF881FU

S11 1UFS

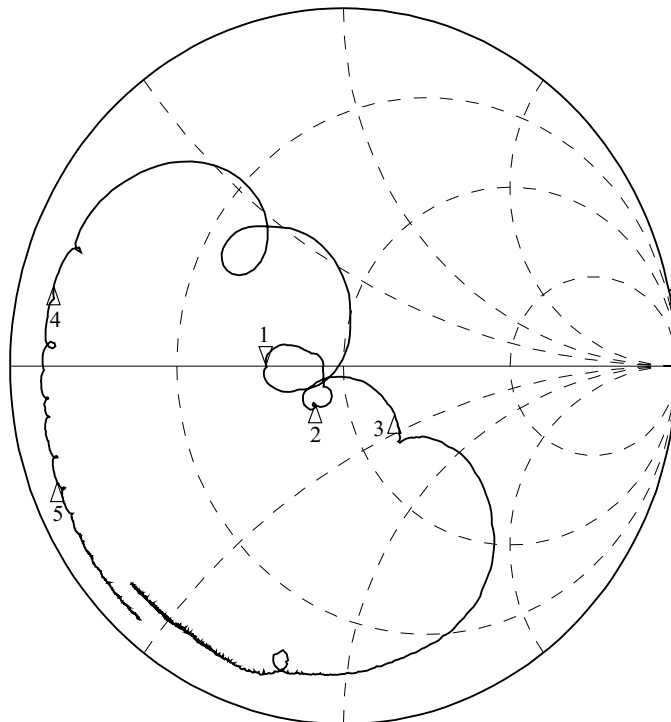


- 1 : 26.877Ω
0.1191Ω
21.820pH
869MHz
- 2 : 40.729Ω
-10.402Ω
881.5MHz
- 3 : 58.988Ω
-13.168Ω
894MHz
- 4 : 4.7778Ω
-11.266Ω
849MHz
- 5 : 3.3994Ω
-26.450Ω
824MHz

CENTER 881.5 MHz

SPAN 300 MHz

S22 1UFS



- 1 : 31.186Ω
0.1377Ω
25.219pH
869MHz
- 2 : 41.365Ω
-8.9844Ω
881.5MHz
- 3 : 65.289Ω
-18.492Ω
894MHz
- 4 : 2.7603Ω
6.3049Ω
849MHz
- 5 : 2.2280Ω
-9.1548Ω
824MHz

CENTER 881.5 MHz

SPAN 300 MHz

KF881FU

