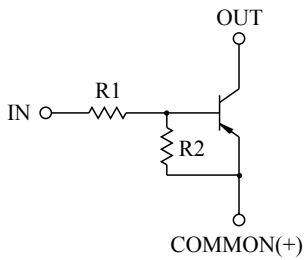


SWITCHING APPLICATION.
INTERFACE CIRCUIT AND DRIVER CIRCUIT APPLICATION.

FEATURES

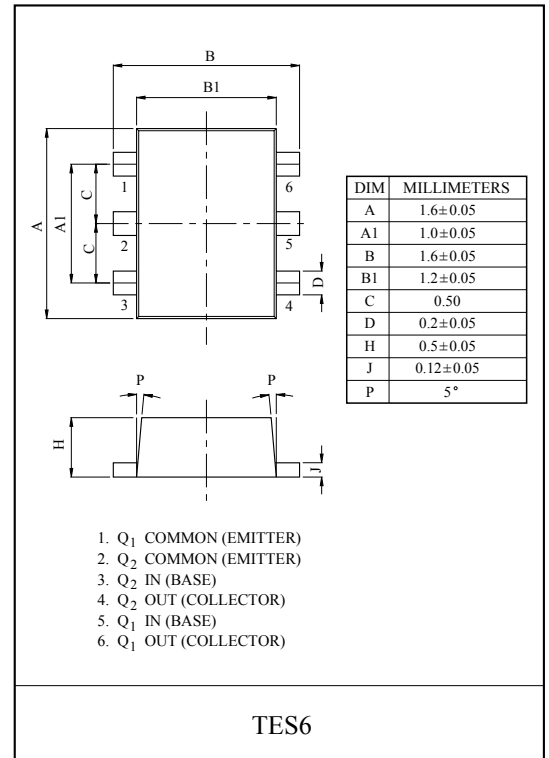
- With Built-in Bias Resistors.
- Simplify Circuit Design.
- Reduce a Quantity of Parts and Manufacturing Process.
- High Packing Density.

EQUIVALENT CIRCUIT

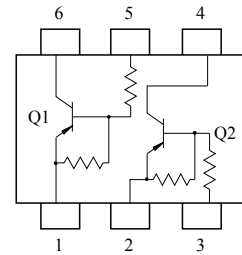


BIAS RESISTOR VALUES

TYPE NO.	R1(kΩ)	R2(kΩ)
KRA721E	4.7	4.7
KRA722E	10	10
KRA723E	22	22
KRA724E	47	47
KRA725E	2.2	47
KRA726E	4.7	47



EQUIVALENT CIRCUIT (TOP VIEW)



MAXIMUM RATING (Ta=25°C)

CHARACTERISTIC		SYMBOL	RATING	UNIT
Output Voltage	KRA721E ~ 726E	V_O	-50	V
Input Voltage	KRA721E	V_I	-20, 10	V
	KRA722E		-30, 10	
	KRA723E		-40, 10	
	KRA724E		-40, 10	
	KRA725E		-12, 5	
	KRA726E		-20, 5	
Output Current	KRA721E ~ 726E	I_O	-100	mA
Power Dissipation		P_D^*	200	mW
Junction Temperature		T_j	150	°C
Storage Temperature Range		T_{stg}	-55 ~ 150	°C

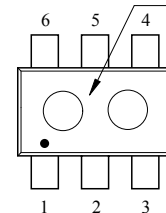
* Total Rating.

MARK SPEC

TYPE	KRA721E	KRA722E	KRA723E	KRA724E	KRA725E	KRA726E
MARK	JA	JB	JC	JD	JE	JF

Marking

Type Name



KRA721E~KRA726E

ELECTRICAL CHARACTERISTICS (Ta=25°C)

CHARACTERISTIC		SYMBOL	TEST CONDITION	MIN.	TYP.	MAX.	UNIT
Output Cut-off Current	KRA721E ~ 726E	$I_{O(OFF)}$	$V_O=-50V, V_I=0$	-	-	-500	nA
DC Current Gain	KRA721E	G_I	$V_O=-5V, I_O=-10mA$	30	55	-	
	KRA722E			50	80	-	
	KRA723E			70	120	-	
	KRA724E			80	200	-	
	KRA725E			80	200	-	
	KRA726E			80	200	-	
Output Voltage	KRA721E ~ 726E	$V_{O(ON)}$	$I_O=-10mA, I_I=-0.5mA$	-	-0.1	-0.3	V
Input Voltage (ON)	KRA721E	$V_{I(ON)}$	$V_O=-0.2V, I_O=-5mA$	-	-1.5	-2.0	V
	KRA722E			-	-1.8	-2.4	
	KRA723E			-	-2.1	-3.0	
	KRA724E			-	-2.8	-5.0	
	KRA725E			-	-0.8	-1.1	
	KRA726E			-	-0.9	-1.3	
Input Voltage (OFF)	KRA721E ~ 724E	$V_{I(OFF)}$	$V_O=-5V, I_O=-0.1mA$	-1.0	-1.2	-	V
	KRA725E ~ 726E			-0.5	-0.65	-	
Transition Frequency	KRA721E ~ 726E	f_T^*	$V_O=-10V, I_O=-5mA$	-	200	-	MHz
Input Current	KRA721E	I_I	$V_I=-5V$	-	-	-1.8	mA
	KRA722E			-	-	-0.88	
	KRA723E			-	-	-0.36	
	KRA724E			-	-	-0.18	
	KRA725E			-	-	-3.6	
	KRA726E			-	-	-1.8	

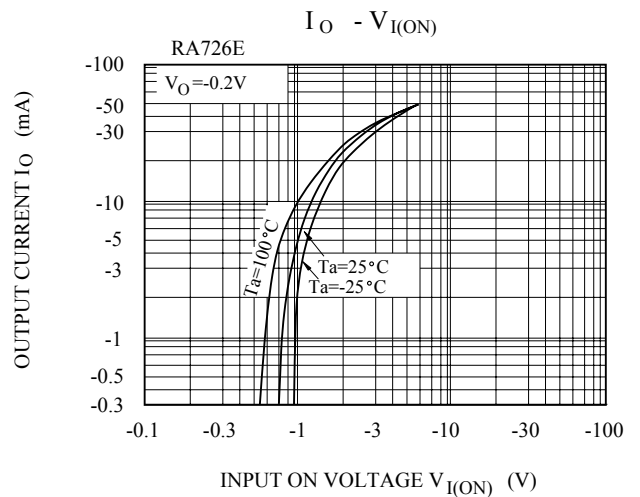
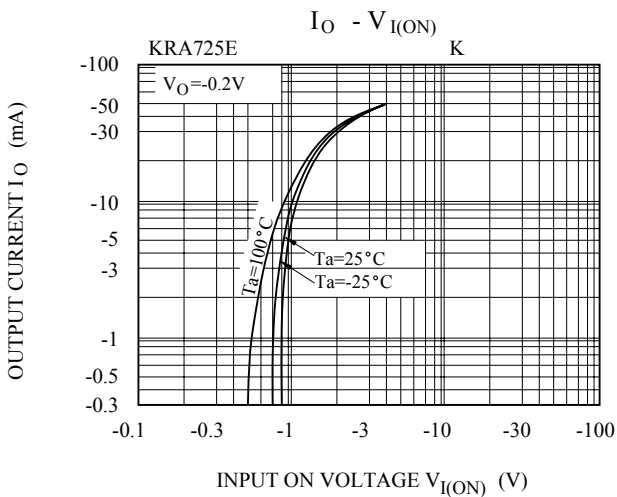
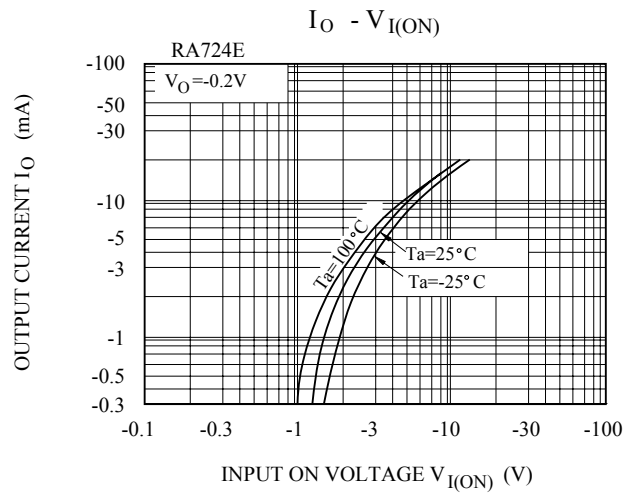
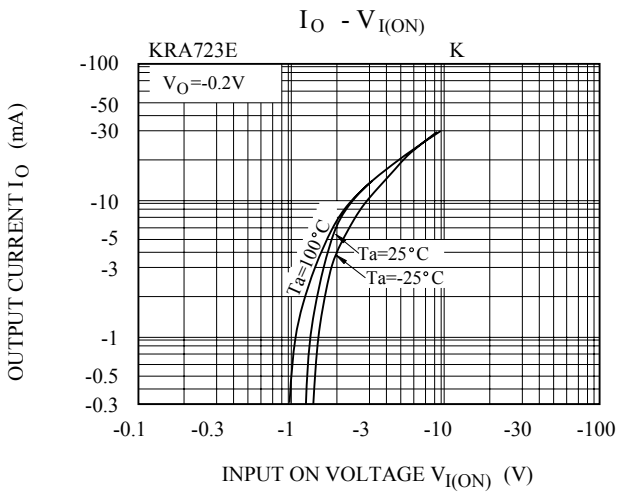
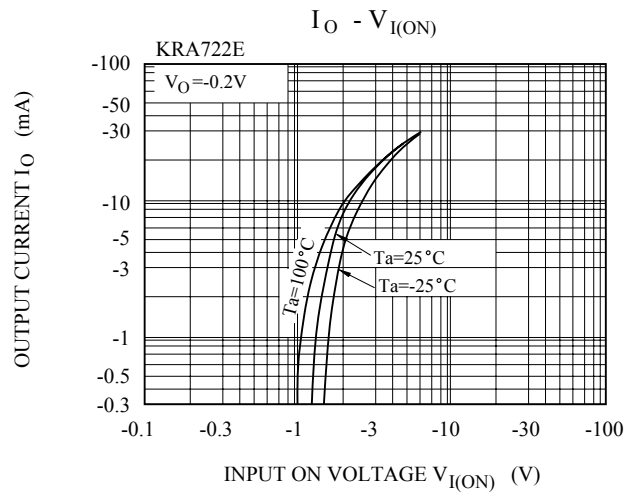
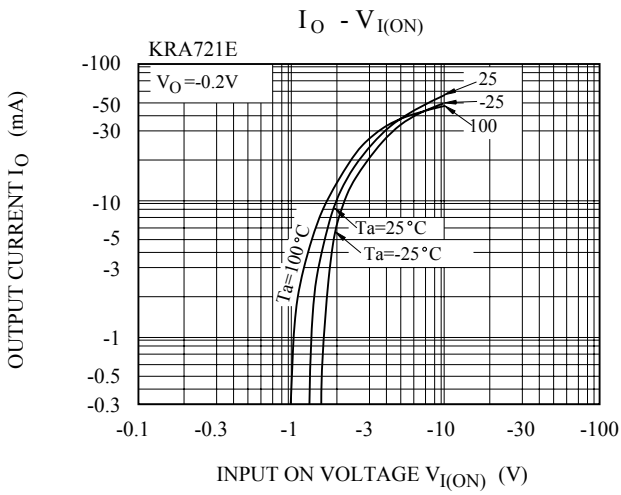
Note : * Characteristic of Transistor Only.

KRA721E~KRA726E

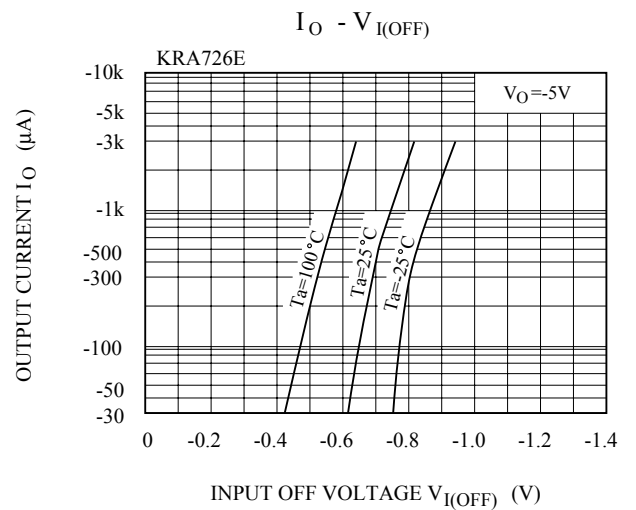
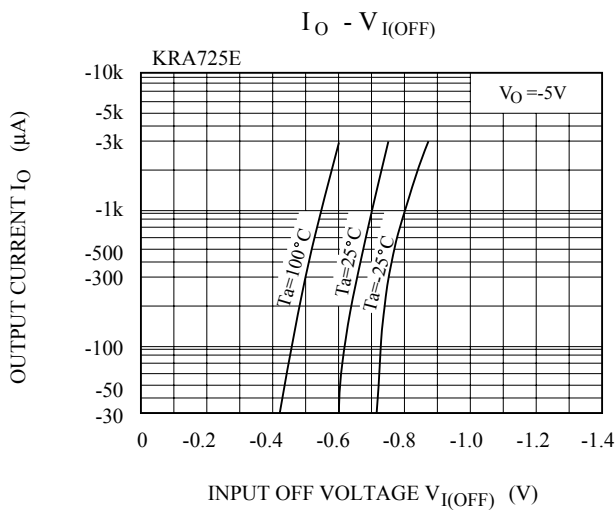
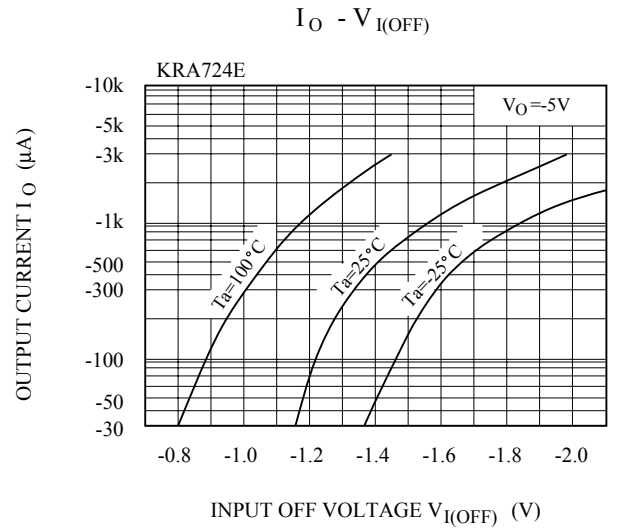
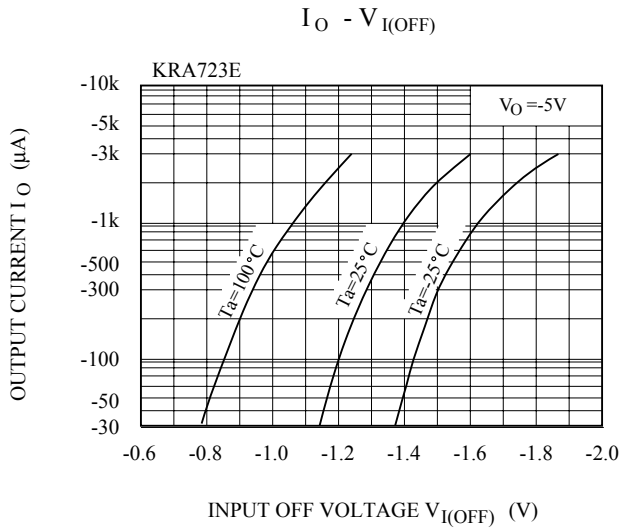
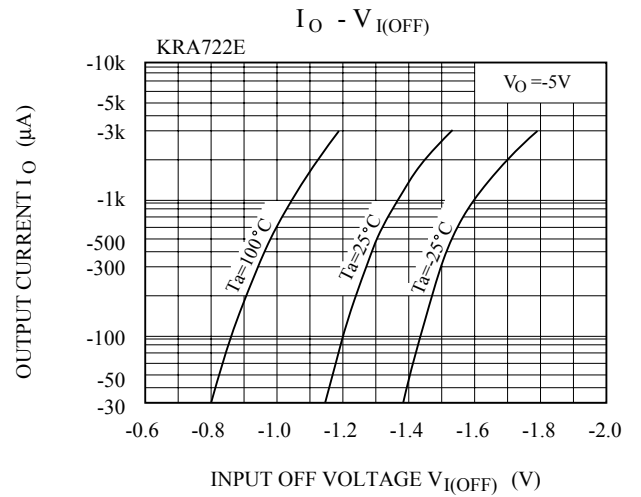
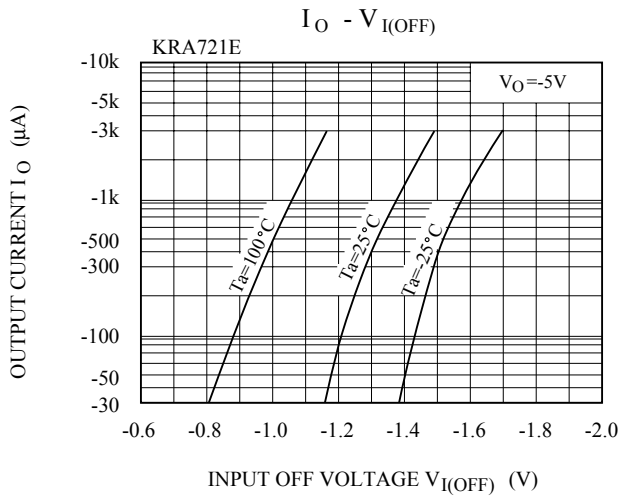
ELECTRICAL CHARACTERISTICS (Ta=25°C)

CHARACTERISTIC		SYMBOL	TEST CONDITION	MIN.	TYP.	MAX.	UNIT
Switching Time	Rise Time	KRA721E	V _O =-5V V _{IN} =-5V R _L =1kΩ	-	0.07	-	μS
		KRA722E		-	0.06	-	
		KRA723E		-	0.2	-	
		KRA724E		-	0.24	-	
		KRA725E		-	0.02	-	
		KRA726E		-	0.07	-	
	Storage Time	KRA721E		-	1.1	-	
		KRA722E		-	1.1	-	
		KRA723E		-	1.1	-	
		KRA724E		-	1.1	-	
		KRA725E		-	1.1	-	
		KRA726E		-	1.1	-	
	Fall Time	KRA721E		-	0.15	-	
		KRA722E		-	0.24	-	
		KRA723E		-	0.38	-	
		KRA724E		-	0.63	-	
		KRA725E		-	0.1	-	
		KRA726E		-	0.2	-	

KRA721E~KRA726E



KRA721E~KRA726E



KRA721E~KRA726E

