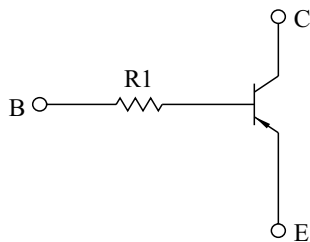


SWITCHING APPLICATION.  
INTERFACE CIRCUIT AND DRIVER CIRCUIT APPLICATION.

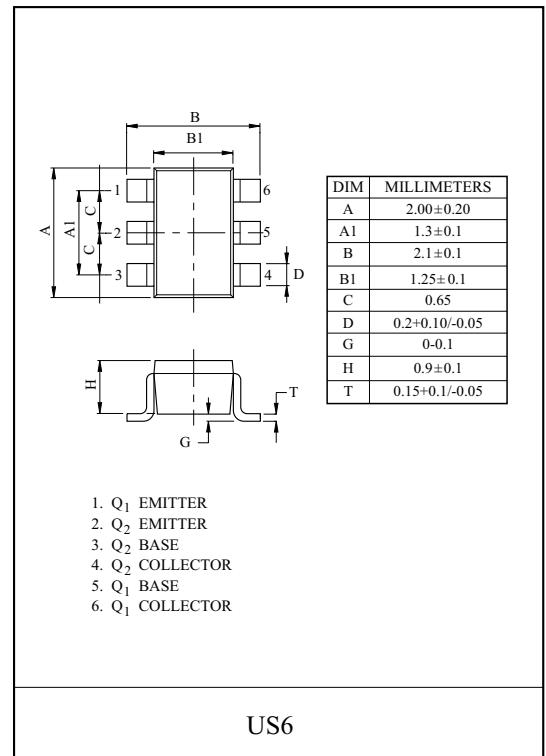
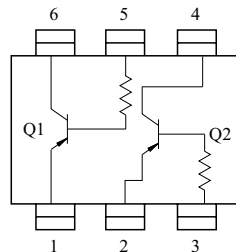
### FEATURES

- With Built-in Bias Resistors.
- Simplify Circuit Design.
- Reduce a Quantity of Parts and Manufacturing Process.
- High Packing Density.

### EQUIVALENT CIRCUIT



### EQUIVALENT CIRCUIT (TOP VIEW)



### MAXIMUM RATING (Ta=25 °C)

CHARACTERISTIC	SYMBOL	RATING	UNIT	CHARACTERISTIC	SYMBOL	RATING	UNIT
Collector-Base Voltage	$V_{CBO}$	-50	V	Collector Power Dissipation	$P_C^*$	200	mW
Collector-Emitter Voltage	$V_{CEO}$	-50	V	Junction Temperature	$T_j$	150	°C
Emitter-Base Voltage	$V_{EBO}$	-5	V	Storage Temperature Range	$T_{stg}$	-55 ~ 150	°C
Collector Current	$I_C$	-100	mA	* Total Rating.			

### ELECTRICAL CHARACTERISTICS (Ta=25 °C)

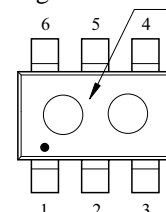
CHARACTERISTIC	SYMBOL	TEST CONDITION	MIN.	TYP.	MAX.	UNIT	
Collector Cut-off Current	$I_{CBO}$	$V_{CB}=-50V, I_E=0$	-	-	-100	nA	
Emitter Cut-off Current	$I_{EBO}$	$V_{EB}=-5V, I_C=0$	-	-	-100	nA	
DC Current Gain	$h_{FE}$	$V_{CE}=-5V, I_C=-1mA$	120	-	-		
Collector-Emitter Saturation Voltage	$V_{CE(sat)}$	$I_C=-10mA, I_B=-0.5mA$	-	-0.1	-0.3	V	
Transition Frequency	$f_T^*$	$V_{CE}=-10V, I_C=-5mA$	-	250	-	MHz	
Input Resistor	KRA730U	$R_1$		-	4.7	-	kΩ
	KRA731U			-	10	-	
	KRA732U			-	100	-	
	KRA733U			-	22	-	
	KRA734U			-	47	-	

Note : \* Characteristic of transistor only.

### MARK SPEC

TYPE	KRA730U	KRA731U	KRA732U	KRA733U	KRA734U
MARK	JK	JM	JN	JO	JP

### Marking

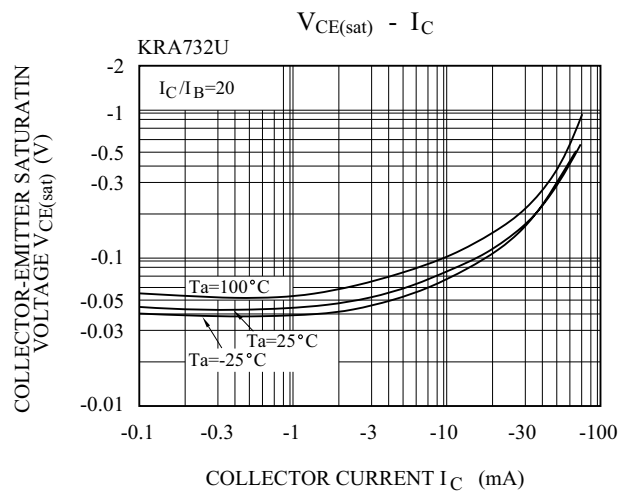
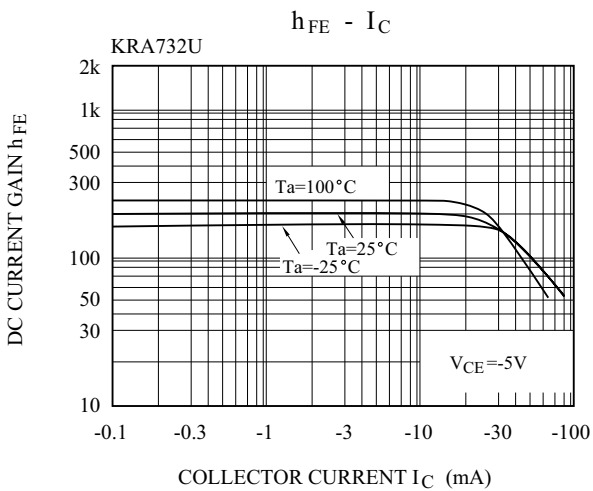
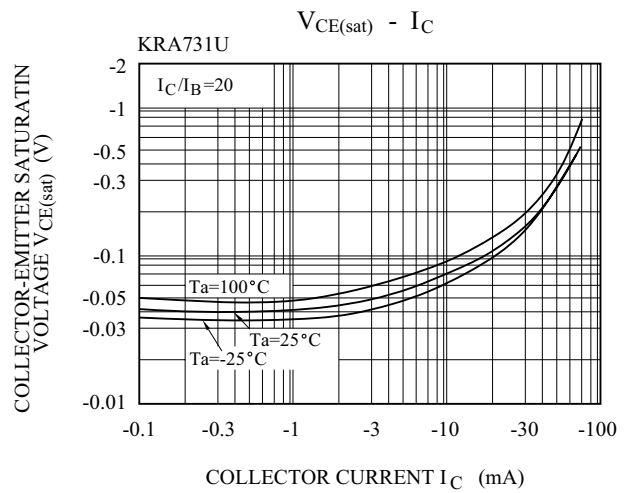
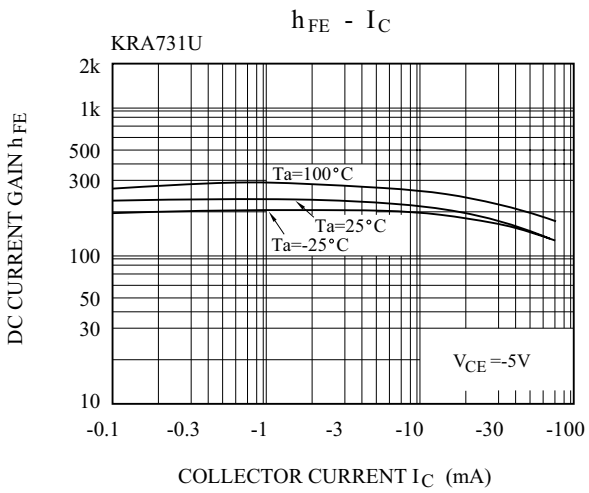
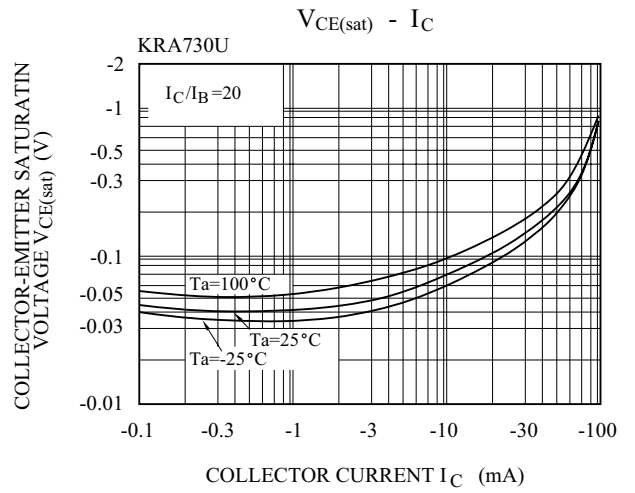
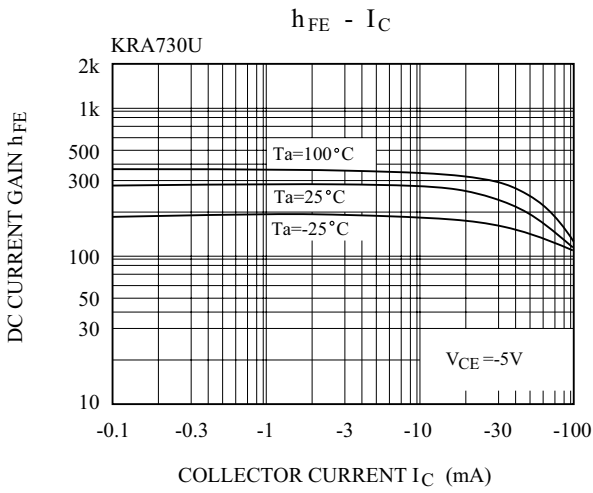


# KRA730U~KRA734U

## ELECTRICAL CHARACTERISTICS (Ta=25 °C)

CHARACTERISTIC		SYMBOL	TEST CONDITION	MIN.	TYP.	MAX.	UNIT
Switching Time	Rise Time	KRA730U	V <sub>O</sub> =-5V V <sub>IN</sub> =-5V R <sub>L</sub> =1k Ω	-	0.2	-	μS
		KRA731U		-	0.065	-	
		KRA732U		-	0.4	-	
		KRA733U		-	0.1	-	
		KRA734U		-	0.15	-	
	Storage Time	KRA730U		-	2.0	-	
		KRA731U		-	1.7	-	
		KRA732U		-	3.0	-	
		KRA733U		-	2.0	-	
		KRA734U		-	1.5	-	
	Fall Time	KRA730U		-	0.3	-	
		KRA731U		-	0.3	-	
		KRA732U		-	1.7	-	
		KRA733U		-	0.8	-	
		KRA734U		-	1.5	-	

# KRA730U~KRA734U



# KRA730U~KRA734U

