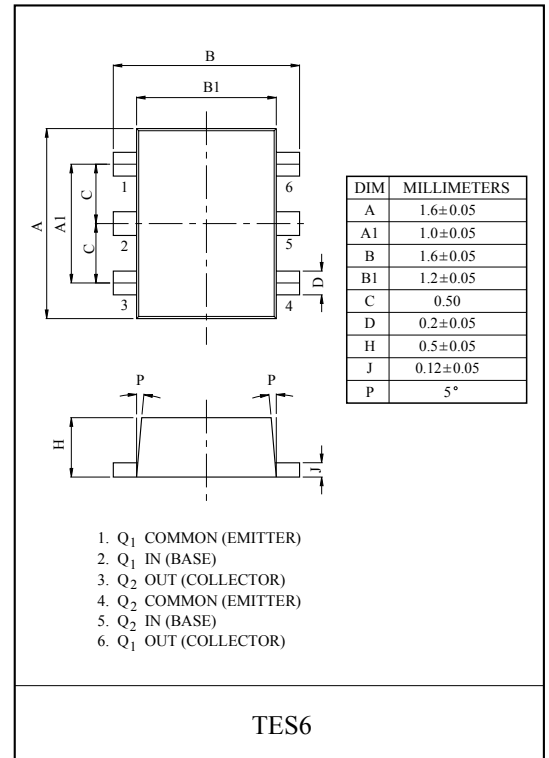
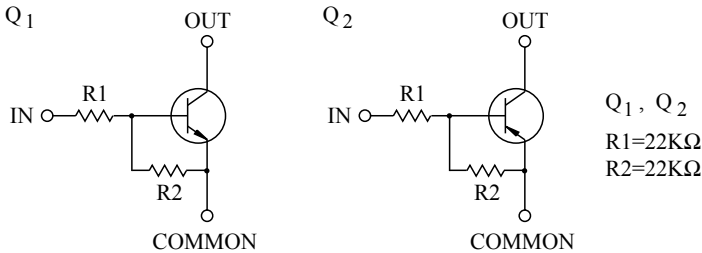


SWITCHING APPLICATION.
INTERFACE CIRCUIT AND DRIVER CIRCUIT APPLICATION.

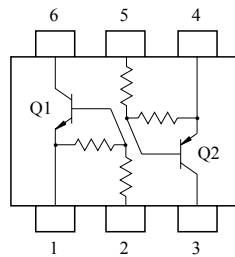
FEATURES

- Including two devices in TES6.
(Thin Extreme Super mini type with 6 pin.)
- With Built-in bias resistors.
- Simplify circuit design.
- Reduce a quantity of parts and manufacturing process.

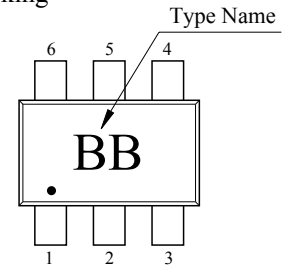
EQUIVALENT CIRCUIT



EQUIVALENT CIRCUIT (TOP VIEW)



Marking



Q1 MAXIMUM RATING (Ta=25°C)

| CHARACTERISTIC | SYMBOL | RATING | UNIT |
|----------------|----------------|---------|------|
| Output Voltage | V _O | 50 | V |
| Input Voltage | V _I | 40, -10 | V |
| Output Current | I _O | 100 | mA |

Q2 MAXIMUM RATING (Ta=25°C)

| CHARACTERISTIC | SYMBOL | RATING | UNIT |
|----------------|----------------|---------|------|
| Output Voltage | V _O | -50 | V |
| Input Voltage | V _I | -40, 10 | V |
| Output Current | I _O | -100 | mA |

Q1, Q2 MAXIMUM RATING (Ta=25°C)

| CHARACTERISTIC | SYMBOL | RATING | UNIT |
|---------------------------|------------------|-----------|------|
| Power Dissipation | P _D * | 200 | mW |
| Junction Temperature | T _j | 150 | °C |
| Storage Temperature Range | T _{stg} | -55 ~ 150 | °C |

* Total Raing.

KRX202E

Q1 ELECTRICAL CHARACTERISTICS (Ta=25 °C)

| CHARACTERISTIC | SYMBOL | TEST CONDITION | MIN. | TYP. | MAX. | UNIT. |
|------------------------|--------------|-----------------------|------|------|------|-------|
| Output Cut-off Current | $I_{O(OFF)}$ | $V_O=50V, V_I=0$ | - | - | 500 | nA |
| DC Current Gain | G_I | $V_O=5V, I_O=10mA$ | 70 | 120 | - | |
| Output Voltage | $V_{O(ON)}$ | $I_O=10mA, I_I=0.5mA$ | - | 0.1 | 0.3 | V |
| Input Voltage (ON) | $V_{I(ON)}$ | $V_O=0.2V, I_O=5mA$ | - | 2.1 | 3.0 | V |
| Input Voltage (OFF) | $V_{I(OFF)}$ | $V_O=5V, I_O=0.1mA$ | 1.0 | 1.2 | - | V |
| Transition Frequency | f_T^* | $V_O=10V, I_O=5mA$ | - | 200 | - | MHz |
| Input Current | I_I | $V_I=5V$ | - | - | 0.36 | mA |

Note : * Characteristic of Transistor Only.

Q2 ELECTRICAL CHARACTERISTICS (Ta=25 °C)

| CHARACTERISTIC | SYMBOL | TEST CONDITION | MIN. | TYP. | MAX. | UNIT. |
|------------------------|--------------|-------------------------|------|------|-------|-------|
| Output Cut-off Current | $I_{O(OFF)}$ | $V_O=-50V, V_I=0$ | - | - | -500 | nA |
| DC Current Gain | G_I | $V_O=-5V, I_O=-10mA$ | 70 | 120 | - | |
| Output Voltage | $V_{O(ON)}$ | $I_O=-10mA, I_I=-0.5mA$ | - | -0.1 | -0.3 | V |
| Input Voltage (ON) | $V_{I(ON)}$ | $V_O=-0.2V, I_O=-5mA$ | - | -2.1 | -3.0 | V |
| Input Voltage (OFF) | $V_{I(OFF)}$ | $V_O=-5V, I_O=-0.1mA$ | -1.0 | -1.2 | - | V |
| Transition Frequency | f_T^* | $V_O=-10V, I_O=-5mA$ | - | 200 | - | MHz |
| Input Current | I_I | $V_I=-5V$ | - | - | -0.36 | mA |

Note : * Characteristic of Transistor Only.

KRX202E

