

**FAST RECOVERY  
GLASS PASSIVATED RECTIFIERS**

REVERSE VOLTAGE - **50 to 1000** Volts  
FORWARD CURRENT - **1.5** Amperes

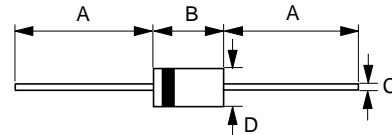
**FEATURES**

- Fast switching for high efficiency
- Glass passivated chip
- Low reverse leakage current
- Low forward voltage drop
- High current capability
- Plastic material has UL flammability classification 94V-0

**MECHANICAL DATA**

- Case : JEDEC DO-41 molded plastic
- Polarity : Color band denotes cathode
- Weight : 0.012 ounces, 0.34 grams
- Mounting position : Any

**DO-41**



DO-41		
Dim.	Min.	Max.
A	25.4	-
B	4.10	5.20
C	0.71 $\varnothing$	0.86 $\varnothing$
D	2.00 $\varnothing$	2.70 $\varnothing$

All Dimensions in millimeter

**MAXIMUM RATINGS AND ELECTRICAL CHARACTERISTICS**

Ratings at 25°C ambient temperature unless otherwise specified.  
Single phase, half wave, 60Hz, resistive or inductive load.  
For capacitive load, derate current by 20%

CHARACTERISTICS	SYMBOL	PR 1501GS	PR 1502GS	PR 1503GS	PR 1504GS	PR 1505GS	PR 1506GS	PR 1507GS	UNIT
Maximum Recurrent Peak Reverse Voltage	VRRM	50	100	200	400	600	600	1000	V
Maximum RMS Voltage	VRMS	35	70	140	280	420	560	700	V
Maximum DC Blocking Voltage	VDC	50	100	200	400	600	800	1000	V
Maximum Average Forward Rectified Current @TA=55°C	I(AV)	1.5							A
Peak Forward Surge Current 8.3ms single half sine-wave super imposed on rated load	IFSM	50							A
Maximum forward Voltage at 1.5A DC	VF	1.3							V
Maximum DC Reverse Current at Rated DC Blocking Voltage @TJ=25°C @TJ=125°C	IR	5.0 100							uA
Maximum Reverse Recovery Time (Note 1)	T <sub>RR</sub>	150				250	500		ns
Typical Junction Capacitance (Note2)	C <sub>J</sub>	25							pF
Typical Thermal Resistance (Note 3)	R <sub>θJA</sub>	30							°C/W
Operating Temperature Range	T <sub>J</sub>	-55 to +150							°C
Storage Temperature Range	T <sub>STG</sub>	-55 to +150							°C

NOTES : 1.Reverse Recovery Test Conditons :IF=0.5A IR=1A. T<sub>RR</sub>=0.25A.  
2.Measured at 1.0MHz and applied reverse voltage of 4.0V DC.  
3.Thermal Resistance Junction to Ambient.

REV. 1, 24-May-2000

