

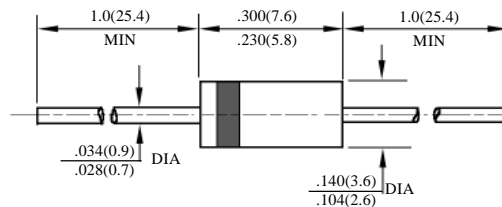
**FR151 – FR157P**

## 1.5A 快速二极管

## 1.5A FAST RECOVERY DIODES

型号 TYPE	最大反向 峰值电压 Maximum Peak Reverse Voltage	最大平均正向电流 Maximum Average Rectified Current @ Half-Wave Resistive Load 60Hz		最大正向浪涌电流 Maximum Forward Peak Surge Current @ 8.3ms Superimposed	最大反向漏电电流 Maximum Reverse Current @ PRV @ T <sub>A</sub> =25°C	最大正向电压 Maximum Forward Voltage @ T <sub>A</sub> =25°C		最大反向 恢复时间 Maximum Reverse Recovery Time	外型尺寸 Package Dimensions
	PRV	I <sub>O</sub> @ T <sub>L</sub>		I <sub>FM</sub> (Surge)	I <sub>R</sub>	I <sub>FM</sub>	V <sub>FM</sub>	T <sub>rr</sub>	
	V <sub>PK</sub>	A <sub>AV</sub>	°C	A <sub>PK</sub>	μA <sub>dc</sub>	A <sub>PK</sub>	V <sub>PK</sub>	ns	
FR151	50	1.5	75	60	5.0	1.5	1.3	150	DO – 15
FR152	100							150	
FR153	200							150	
FR154	400							150	
FR155	600							250	
FR155P	600							150	
FR156	800							500	
FR157	1000							500	
FR157P	1000							250	

 T<sub>rr</sub>测试条件: I<sub>F</sub> = 0.5A, I<sub>R</sub> = 1.0A, I<sub>RR</sub> = 0.25A

 T<sub>rr</sub> Test Conditions: I<sub>F</sub> = 0.5A, I<sub>R</sub> = 1.0A, I<sub>RR</sub> = 0.25A


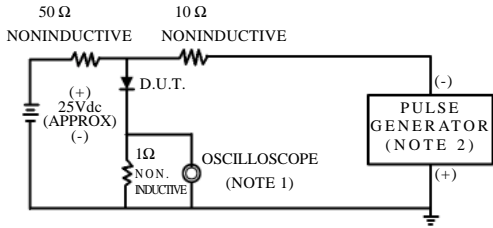
DO – 15

FR151 – FR157P

1.5A 快速二极管额定值与特性曲线

RATING & CHARACTERISTIC CURVES OF 1.5A FAST DIODES

FIG.1–TEST CIRCUIT DIAGRAM AND REVERSE RECOVERY TIME CHARACTERISTIC



NOTES: 1. Rise Time=7ns max.  
Input Impedance=1megohm.22pF.  
2. Rise Time=10ns max.  
Source Impedance=50 ohms.

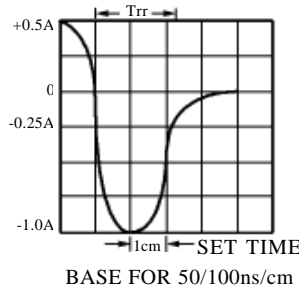


FIG. 2 – TYPICAL FORWARD CURRENT DERATING CURVE

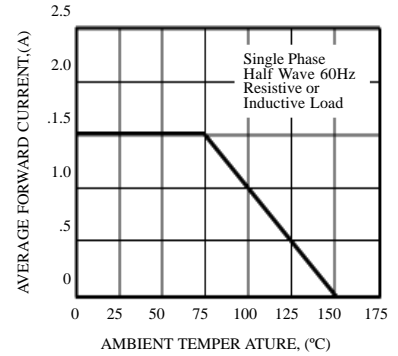


FIG. 3 – TYPICAL INSTANTANEOUS FORWARD CHARACTERISTICS

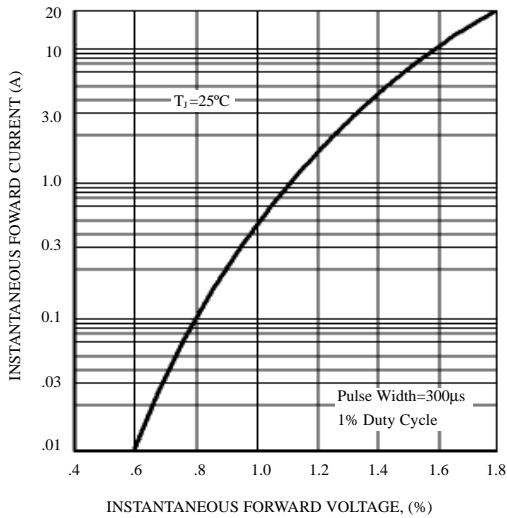


FIG. 4 – MAXIMUM NON-REPETITIVE FORWARD SURGE CURRENT

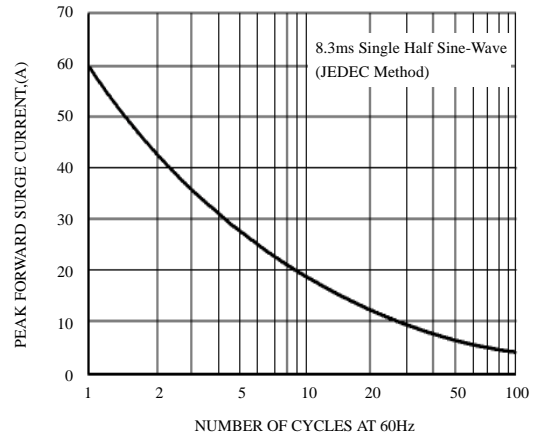


FIG. 5 – TYPICAL JUNCTION CAPACITANCE

