

HER301 – HER308

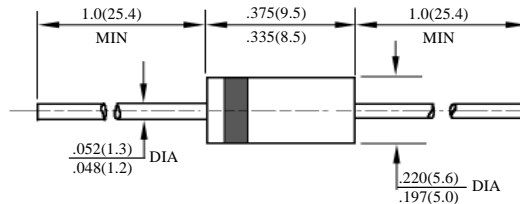
3A 高效二极管

3A HIGH EFFICIENCY DIODES

型号 TYPE	最大反向 峰值电压 Maximum Peak Reverse Voltage	最大平均正向电流 Maximum Average Rectified Current @ Half-Wave Resistive Load 60Hz		最大正向浪涌电流 Maximum Forward Peak Surge Current @ 8.3ms Superimposed	最大反向 漏电流 Maximum Reverse Current @ PRV @ T <sub>A</sub> =25°C	最大正向电压 Maximum Forward Voltage @ T <sub>A</sub> =25°C		最大反向 恢复时间 Maximum Reverse Recovery Time	外型尺寸 Package Dimensions
	PRV V <sub>PK</sub>	I <sub>O</sub> @ T <sub>L</sub> A <sub>AV</sub>	°C	I <sub>FM</sub> (Surge) A <sub>PK</sub>	I <sub>R</sub> μA <sub>dc</sub>	I <sub>FM</sub> A <sub>PK</sub>	V <sub>FM</sub> V <sub>PK</sub>	T <sub>rr</sub> ns	
HER301	50	3.0		200	10	3.0	1.00	50	DO-201AD
HER302	100						1.00		
HER303	200						1.00		
HER304	300						1.30		
HER305	400						1.30		
HER306	600						1.85		
HER307	800			1.85					
HER308	1000			1.85	70				

T<sub>rr</sub> 测试条件: I<sub>F</sub>=0.5A, I<sub>R</sub>=1.0A, I<sub>RR</sub>=0.25A

T<sub>rr</sub> Test Conditions: I<sub>F</sub>=0.5A, I<sub>R</sub>=1.0A, I<sub>RR</sub>=0.25A



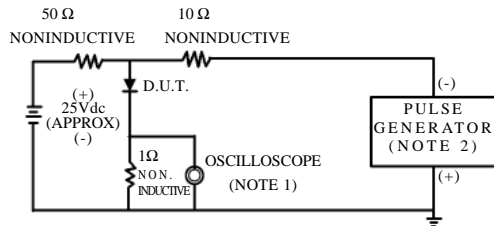
DO – 201AD

# HER301 – HER308

## 3A 高效率二极管额定值与特性曲线

## 3A RATING & CHARACTERISTIC CURVES OF HIGH EFFICIENCY DIODES

FIG.1-TEST CIRCUIT DIAGRAM AND REVERSE RECOVERY TIME CHARACTERISTIC



NOTES:1.Rise Time=7ns max.  
Input Impedance=1megohm.22pF.  
2.Rise Time=10ns max.  
Source Impedance=50 ohms.

FIG. 2 - TYPICAL FORWARD CURRENT DERATING CURVE

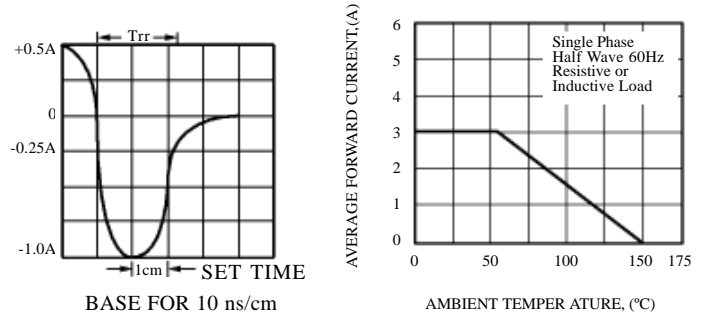


FIG. 3 - TYPICAL REVERSE CHARACTERISTICS

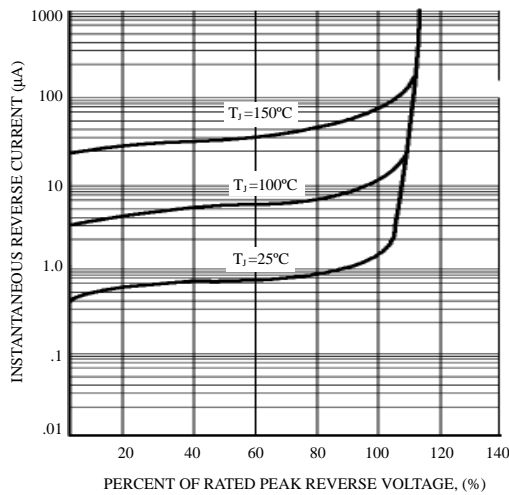


FIG. 4 - TYPICAL INSTANTANEOUS FORWARD CHARACTERISTICS

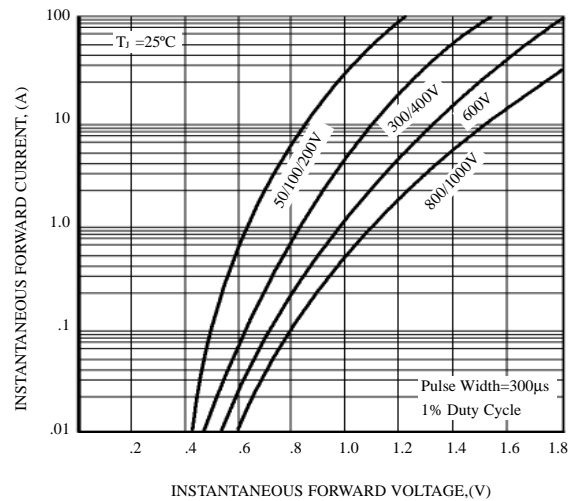


FIG. 5 - MAXIMUM NON-REPETITIVE FORWARD SURGE CURRENT

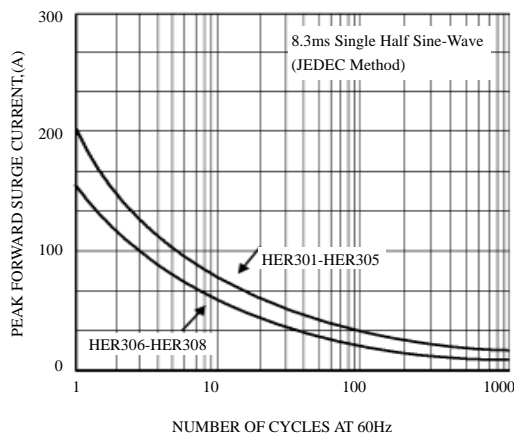


FIG. 6 - TYPICAL JUNCTION CAPACITANCE

