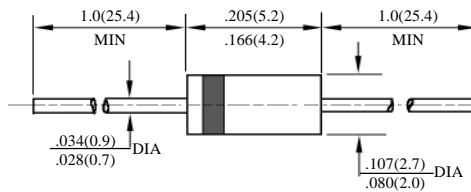


SF11 – SF16

超快速二极管 SUPER FAST DIODES

型号 TYPE	最大反向 峰值电压 Maximum Peak Reverse Voltage	最大平均 正向电流 Maximum Average Rectified Current @ Half-Wave Resistive Load 60Hz		最大正向 浪涌电流 Maximum Forward Peak Surge Current @ 8.3ms Superimposed	最大反向 漏电流 Maximum Reverse Current @ PRV @ T _A =25°C	最大正向电压 Maximum Forward Voltage @ T _A =25°C		最大反向 恢复时间 Maximum Reverse Recovery Time	外型尺寸 Package Dimensions
	PRV	I _O @ T _L		I _{FM} (Surge)	I _R	I _{FM}	V _{FM}	T _{rr}	
	V _{PK}	A _{AV}	°C	A _{PK}	μA _{dc}	A _{PK}	V _{PK}	ns	
SF11	50	1.0	55	30	5.0	1.0	0.95	35	DO – 41
SF12	100						0.95		
SF13	150						0.95		
SF14	200						0.95		
SF15	300						1.25		
SF16	400						1.25		

 T_{rr}测试条件: I_F = 0.5A, I_R = 1.0A, I_{RR} = 0.25A

 T_{rr} Test Conditions: I_F = 0.5A, I_R = 1.0A, I_{RR} = 0.25A


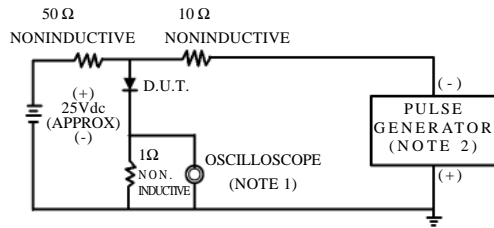
DO – 41

SF11-SF16

超快速二极管额定值与特性曲线

RATING AND CHARACTERISTIC CURVES OF SUPER FAST DIODES

FIG.1-TEST CIRCUIT DIAGRAM AND REVERSE RECOVERY TIME CHARACTERISTIC



NOTES: 1. Rise Time=7ns max.
Input Impedance=1megohm.22pF.
2. Rise Time=10ns max.
Source Impedance=50 ohms.

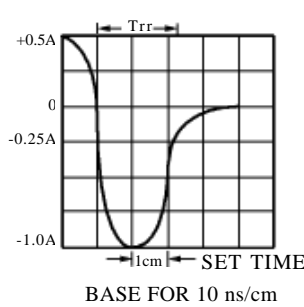


FIG. 2 - TYPICAL FORWARD CURRENT DERATING CURVE

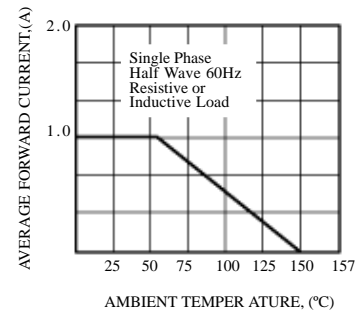


FIG. 3 - TYPICAL REVERSE CHARACTERISTICS

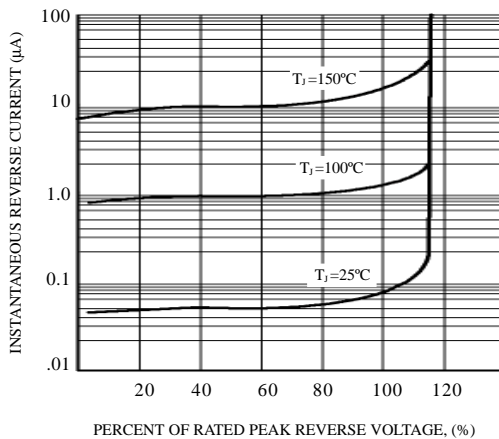


FIG. 4 - TYPICAL INSTANTANEOUS FORWARD CHARACTERISTICS

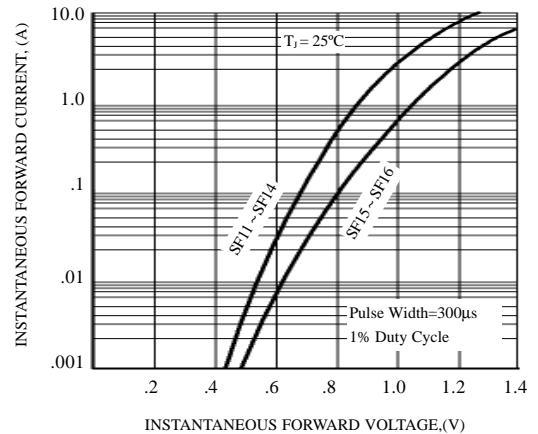


FIG. 5 - MAXIMUM NON-REPETITIVE FOWARD SURGE CURRENT

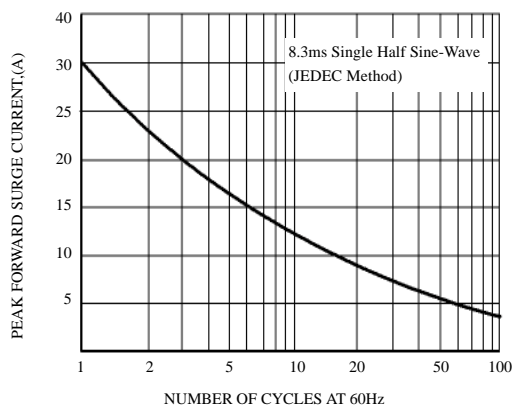


FIG. 6 - TYPICAL JUNCTION CAPACITANCE

