

Broadband Four-Way Power Divider

2 - 2000 MHz

DS-4-4

V2.00

Features

- 3 Decade Frequency Range
- Low Loss — 1 dB Maximum to 1000 MHz
High Isolation — 25 dB Midband Minimum

Guaranteed Specifications*

(From -55°C to +85°C)

Frequency Range	2-2000 MHz	
Insertion Loss (Less coupling)	2-30 MHz	0.75 dB Max
	30-400 MHz	0.5 dB Max
	400-1000 MHz	1.0 dB Max
	1000-2000 MHz	2.0 dB Max
Isolation	2-30 MHz	15 dB Min
	30-400 MHz	30 dB Min
	400-1000 MHz	24 dB Min
	1000-2000 MHz	20 dB Min
Amplitude Balance	2-30 MHz	0.6 dB Max
	30-400 MHz	1.0 dB Max
	400-1000 MHz	1.0 dB Max
	1000-2000 MHz	1.0 dB Max
Phase Balance	2-30 MHz	15° Max
	30-400 MHz	5° Max
	400-1000 MHz	5° Max
	1000-2000 MHz	5° Max
VSWR (All Ports)	2-30 MHz	2.0:1 Max
	30-400 MHz	1.3:1 Max
	400-1000 MHz	1.3:1 Max
	1000-2000 MHz	1.9:1 Max

Operating Characteristics

Impedance	50 Ohms Nominal
Maximum Power Rating or Input Power	1.0 Watt Max
Internal Load Dissipation	0.25 Watt Max

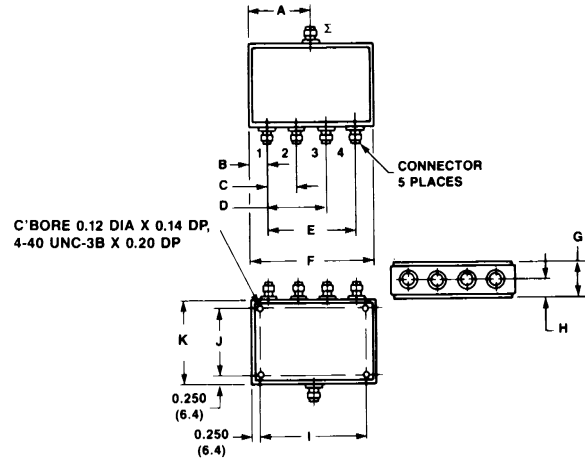
Environmental
MIL-STD-202 screening available.

* All specifications apply with 50 ohm source and load impedance.
This product contains elements protected by United States Patent Number 3,325,587.

Ordering Information

Model No.	Package
DS-4-4 N	Connectorized
DS-4-4 BNC	Connectorized
DS-4-4 SMA	Connectorized
DS-4-4 TNC	Connectorized

C-17



Dimensions in () are in mm.
Unless Otherwise Noted: .xxx = ±0.015 (.x = ±0.4)
Weight (Approx): 10.58 ounces 300 grams

	A	B	C	D	E	F	G	H	I	J	K
DS-4-4	2.250 (57.2)	0.656 (16.7)	1.062 (27.0)	2.125 (54.0)	3.188 (81.0)	4.500 (114.3)	1.145± 0.020 (29.1± 0.5)	0.562± 0.020 (14.3± 0.5)	4.000 (101.6)	2.500 (63.5)	3.000 (76.1)

Typical Performance

