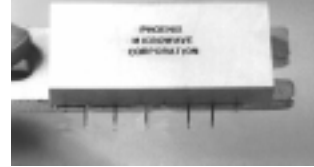


PA1151 **1930-1990 MHz.** **PCS**
4 Watt **Ultra Linear Power Amplifier**



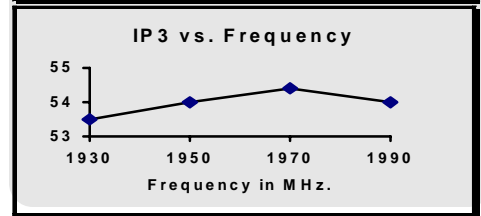
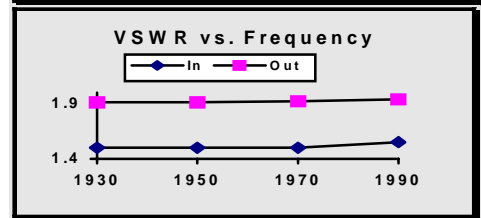
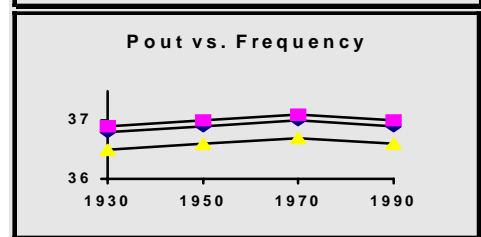
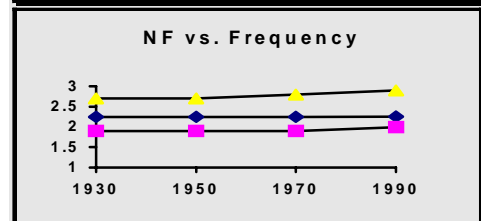
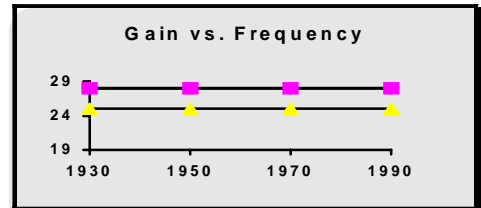
Features (typical values)

- High IP3** **+54.0 dBm.**
- Low NF** **2.4 dB.**
- High Output Power** **+36.8 dBm.**
- Low Cost**

Parameter	Typical Value	Min. Value	Max. Value	Units
Frequency		1930	1990	MHz.
Gain	26.5	25.0		dB.
Gain Flatness	±0.5			dB.
Reverse Isolation	45			dB.
Pout @ 1dB. comp.	36.8	36.0		dBm.
Noise Figure	2.4		3.5	dB.
IP3	+54.0	+52.0		dBm.
VSWR	1.5:1/2:1		2.0:2.5:1	
Supply Req'd	+10/1350		+10/1700	v./mA.

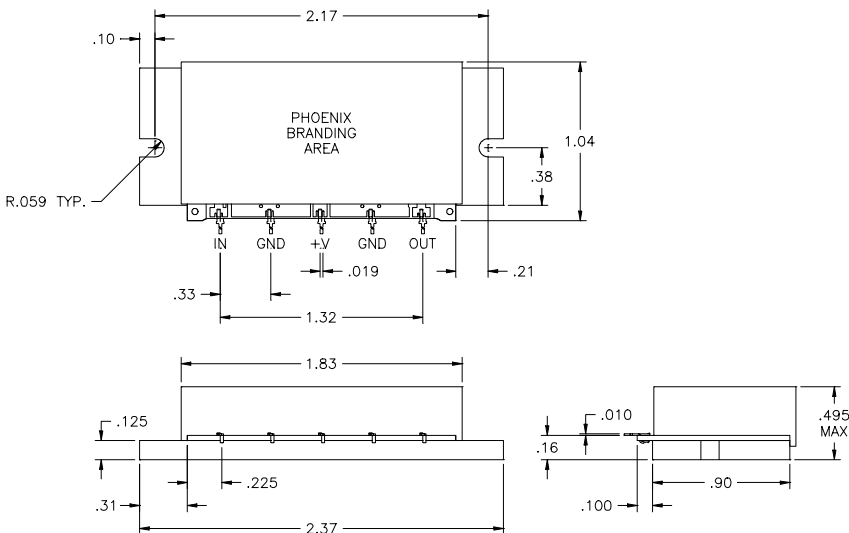
Typical Performance @

--♦-- +25°C --■-- -0°C --△-- +85°C



IP3 measured with 2 tones @+22dBm. per tone
 Min and max values from 0 to 85 degrees C
 CDMA data available

Outline Drawings



Maximum Ratings

- Storage Temperature -40°C to +125°C
- DC Voltage +12 volts
- RF Input Power +15 dBm.
- Case Temperature +95°C