

PA1157
4 Watt

2000-2200 MHz. WCDMA
Ultra Linear Power Amplifier

tyco

Electronics

M/A-COM



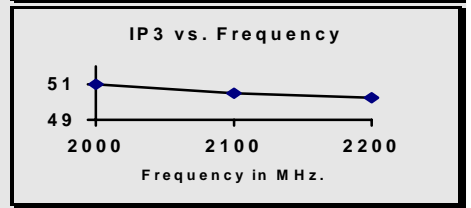
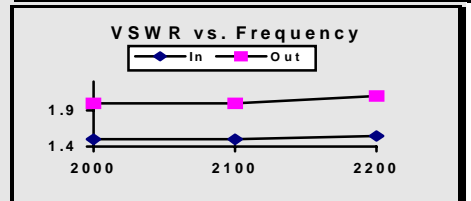
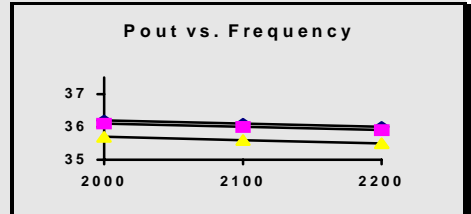
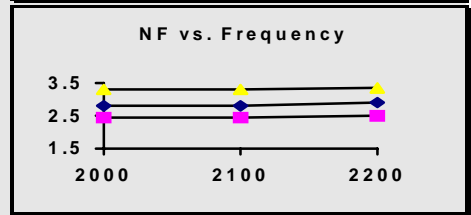
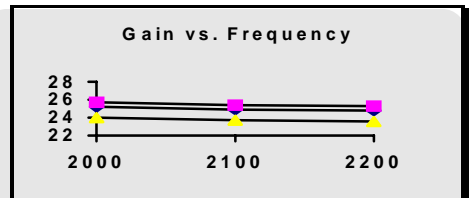
Features (typical values)

- High IP3** +52.0 dBm.
- Low NF** 3.0 dB.
- High Output Power** +36.0 dBm.
- Low Cost**

Parameter	Typical Value	Min. Value	Max. Value	Units
Frequency		2000	2200	MHz.
Gain	24.5	23.5		dB.
Gain Flatness	±0.3		±0.5	dB.
Reverse Isolation	40			dB.
Pout @ 1dB. comp.	36.0	35.0		dBm.
Noise Figure	3.0		4.0	dB.
IP3 (two tone)	+50.0	+48.0		dBm.
VSWR (Input/Out)	1.5:1/2:1		1.8:1/2.5:1	
Supply Req'd	+10/1350		+10/1700	v./mA.

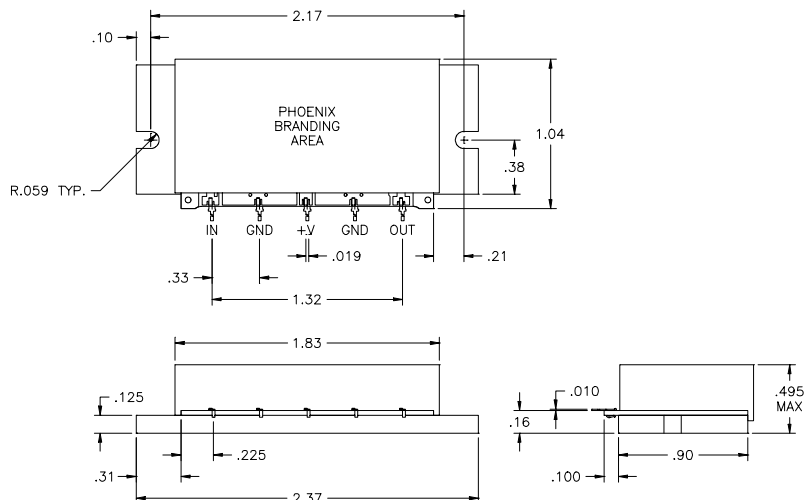
Typical Performance @ 25°C

--◇-- 0°C --◇-- +25°C --△-- +85°C



IP3 measured with 2 tones @+22dBm. per tone @ 1 MHz apart
Min and max values from 0 to 85 degrees C

Outline Drawings



Maximum Ratings

- Storage Temperature -40°C to +125°C
- DC Voltage +12 volts
- RF Input Power +15 dBm.
- Case Temperature +95°C