

PAW587

40-550 MHz.

tyco

Electronics

21 dB.

CATV Ultra-linear Amplifier

M/A-COM



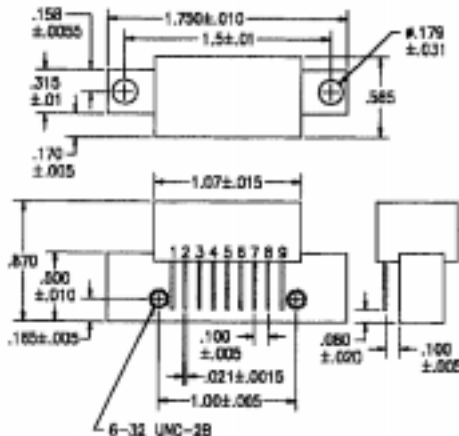
Features: (typical values)

- Ultra High Linearity
- Low Noise Figure
- Rugged Construction
- Operation over a wide voltage range
- Usable for 50 ohm operation

Specifications @Tcase = 30°C (Referenced to 75 ohms)

| Parameter | Typical Conditions | Min. Value | Max. Value | Units |
|-----------------------------------|--|------------|------------|-------|
| Frequency Range | | 40 | 550 | MHz. |
| Power Gain Rugged Construction | f=50 MHz. | 21 | 22 | dB. |
| Cable Equivalent slope | f=40 MHz. to 750 MHz. | 0 | 1.2 | dB. |
| Gain Flatness (peak to valley) | f=40 to 550 MHz. | - | +/- 0.4 | dB. |
| Input/Output Return Loss | f=40 to 550 MHz. | - | 16 | dB. |
| Composite Triple Beat (CTB) | 77 channels flat Vo=44dBmV. measured @ channel 78 | - | -57 | dB. |
| Cross Modulation (XMOD) | 77 channels flat Vo=44dBmV. measured @ channel 2 | - | -57 | dB. |
| Composite 2nd. Order | 77 channels flat Vo=44dBmV. measured @ channel 78 | - | -55 | dB. |
| IP3 / IP2 | 2 tone | 40/56 | - | dBm. |
| Noise Figure | @ f= 550 MHz. | - | 7.0 | dB. |
| Total Current | @ Voltage of +24v. | - | 340 | mA. |

Outline Drawings



Maximum Ratings

- Storage Temperature -40°C to +100°C
- DC Voltage +28 volts
- RF Input voltage 60dBmV.
- Operating Base Temperature +100°C

Pin Configuration

| Pin # | Description |
|---------|-------------|
| 1 | Input |
| 2,3,7,8 | Ground |
| 5 | +V |
| 4,6 | not used |