



Micro Commercial Components  
 21201 Itasca Street Chatsworth  
 CA 91311  
 Phone: (818) 701-4933  
 Fax: (818) 701-4939

# MUR3005WT THRU MUR3060WT

**30 Amp  
 Super Fast Recovery  
 Rectifier  
 200 to 600 Volts**

## Features

- High Surge Capability
- Low Forward Voltage Drop
- High Current Capability
- Super Fast Switching Speed For High Efficiency

## Maximum Ratings

- Operating Temperature: -55°C to +150°C
- Storage Temperature: -55°C to +150°C

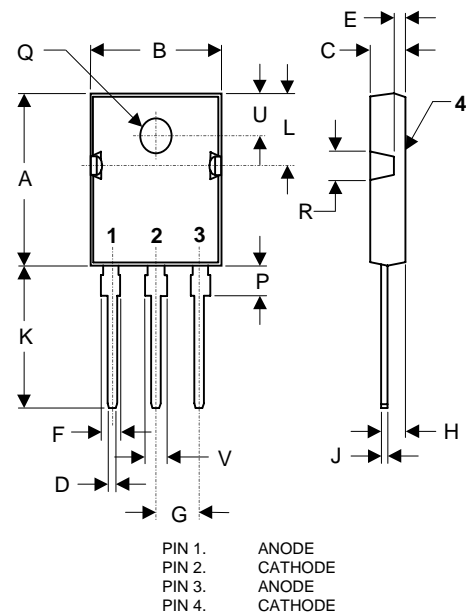
MCC Part Number	Maximum Recurrent Peak Reverse Voltage	Maximum RMS Voltage	Maximum DC Blocking Voltage
MUR3005WT	50V	35V	50V
MUR3010WT	100V	70V	100V
MUR3020WT	200V	140V	200V
MUR3040WT	400V	280V	400V
MUR3060WT	600V	420V	600V

## Electrical Characteristics @ 25°C Unless Otherwise Specified

Average Forward Current	$I_{F(AV)}$	30 A	$T_C = 100^\circ\text{C}$
Peak Forward Surge Current	$I_{FSM}$	300A	8.3ms, half sine
Maximum Instantaneous Forward Voltage	$V_F$	1.05V 1.30V 1.70V	$I_{FM} = 15.0\text{A};$ $T_C = 25^\circ\text{C}$
Maximum DC Reverse Current At Rated DC Blocking Voltage	$I_R$	10 $\mu\text{A}$ 50 $\mu\text{A}$	$T_C = 25^\circ\text{C}$ $T_C = 125^\circ\text{C}$
Maximum Reverse Recovery Time	$T_{rr}$	50ns 80ns	$I_F=0.5\text{A}, I_R=1.0\text{A},$ $I_{rr}=0.25\text{A}$

\*Pulse Test: Pulse Width 300 $\mu\text{sec}$ , Duty Cycle 1%

## TO-247



DIM	INCHES		MM		NOTE
	MIN	MAX	MIN	MAX	
A	.803	.823	20.40	20.90	
B	.608	.628	15.44	15.95	
C	.185	.205	4.70	5.21	
D	.043	.051	1.09	1.30	
E	.059	.064	1.50	1.63	
F	.071	.086	1.80	2.18	
G	.215	BSC	5.45	BSC	
H	.101	.130	2.56	2.87	
J	.019	.027	0.48	0.68	
K	.813	.833	15.57	16.08	
L	.286	.295	7.26	7.50	
P	.122	.133	3.10	3.38	
Q	.138	.145	3.50	3.70	∅
R	.130	.150	3.30	3.80	
U	.209	BSC	5.30	BSC	
V	.120	.134	3.05	3.40	

# MUR3005WT thru MUR3060WT

Figure 1  
Typical Forward Characteristics @  $T_J = 25^\circ\text{C}$

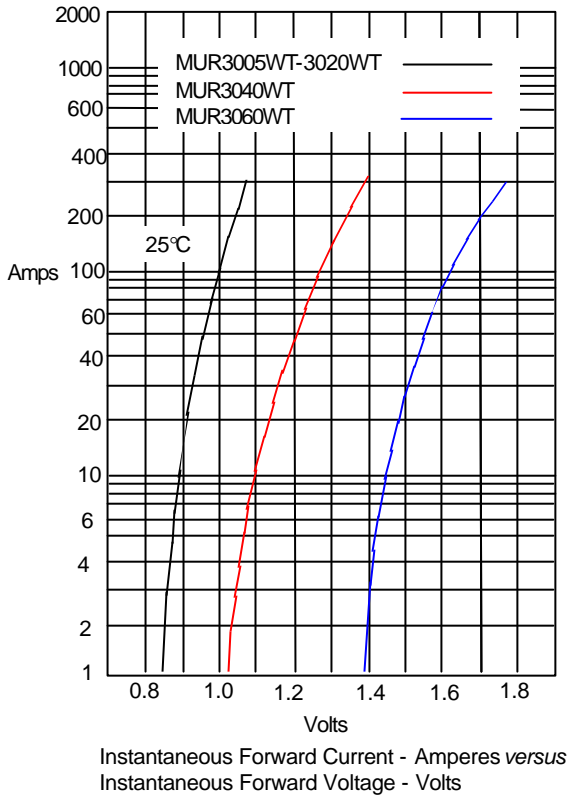


Figure 2  
Typical Forward Characteristics @  $T_J = 100^\circ\text{C}$

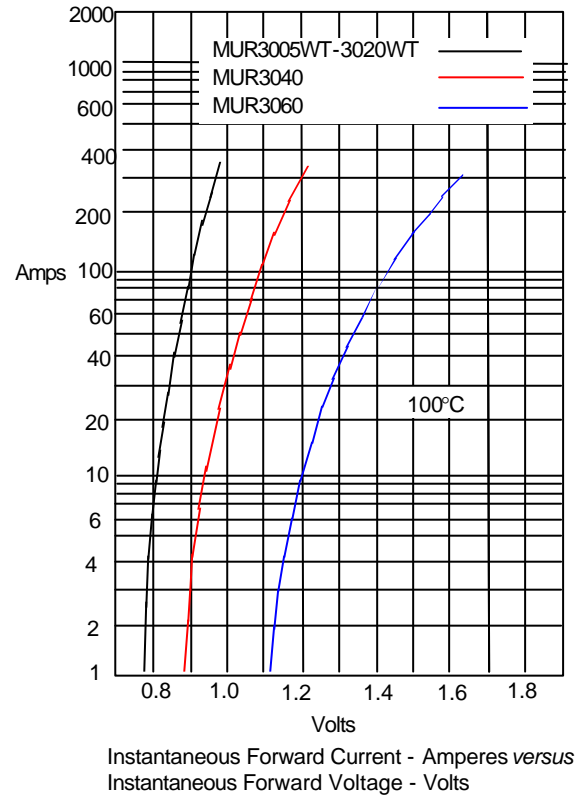
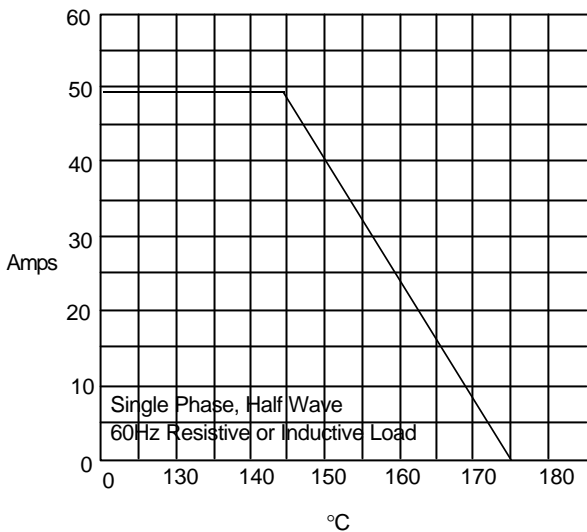


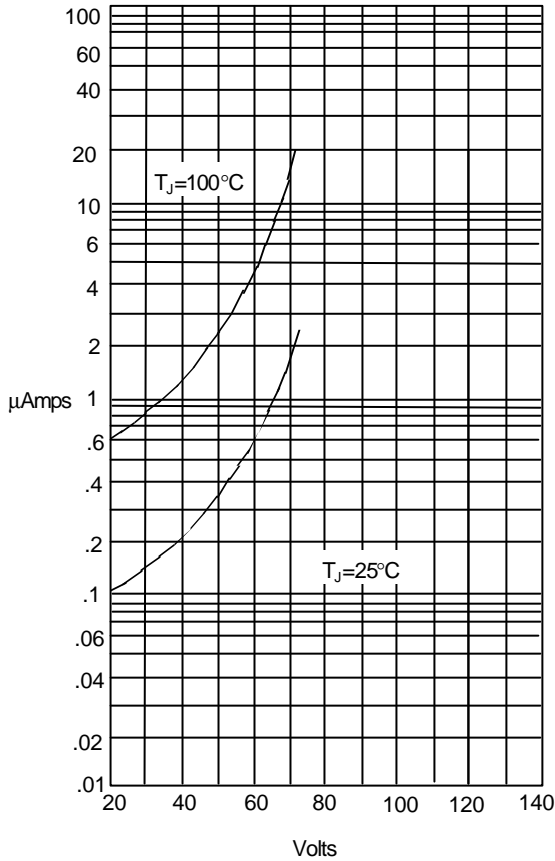
Figure 3  
Forward Derating Curve



Average Forward Rectified Current Per Leg - Amperes *versus* Case Temperature - °C

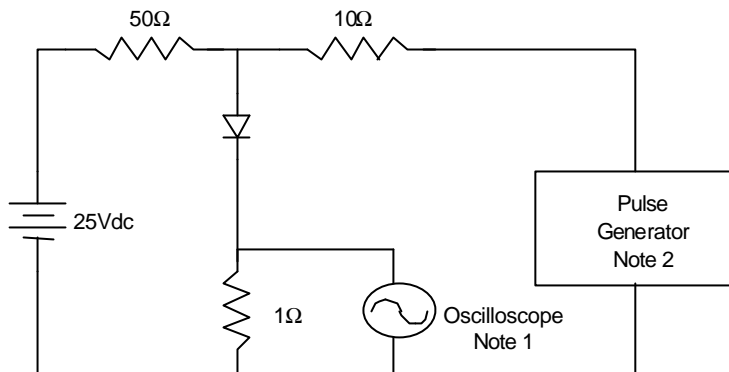
# MUR3005WT thru MUR3060WT

Figure 4  
Typical Reverse Characteristics



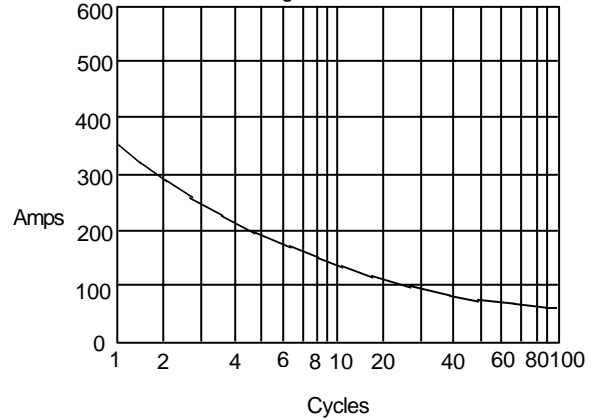
Instantaneous Reverse Leakage Current - MicroAmperes versus

Figure 7  
Reverse Recovery Time Characteristic And Test Circuit Diagram



- Notes:
1. Rise Time = 7ns max.  
Input impedance = 1 megohm, 22pF
  2. Rise Time = 10ns max.  
Source impedance = 50 ohms
  3. Resistors are non-inductive

Figure 5  
Peak Forward Surge Current



Peak Forward Surge Current - Amperes versus Number Of Cycles At 60Hz - Cycles

