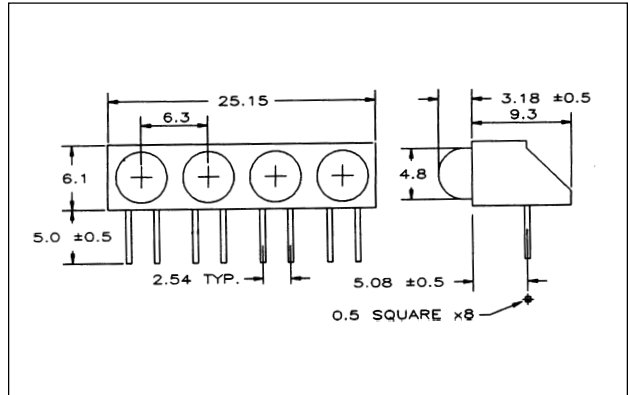


# Packaged LED/PCB Mount Indicators

## FEATURES

- T-1¾ right angle PCB mount LED
- Diffused lens
- Stackable end to end
- Multiple color combinations available

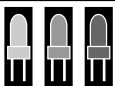


## MAXIMUM RATINGS (Ta = 25°C)

PART NO.	FORWARD CURRENT (I <sub>F</sub> ) (mA)	REVERSE VOLTAGE (V <sub>R</sub> ) (V)	POWER DISSIPATION (P <sub>D</sub> ) (mW)	OPERATING TEMPERATURE (T <sub>opr</sub> ) (°C)	STORAGE TEMPERATURE (T <sub>stg</sub> ) (°C)
MTA2264-YG	(Y)	30	5.0	85	-25~+60
	(G)	30	5.0	85	-25~+60
MTA2264-HRG	(HR)	30	5.0	85	-25~+60
	(G)	30	5.0	85	-25~+60
MTA4064-G	30	5.0	85	-25~+60	-25~+60
MTA4064-Y	30	5.0	85	-25~+60	-25~+60
MTA4064-HR	30	5.0	85	-25~+60	-25~+60

## OPTO-ELECTRICAL CHARACTERISTICS (Ta = 25°C)

PART NO.	MATERIAL	LENS COLOR	VIEWING ANGLE typ.	LUMINOUS INTENSITY (mcd)			FORWARD VOLTAGE (V)			REVERSE CURRENT		PEAK WAVE LENGTH (nm)	
				min.	typ.	@mA	typ.	max.	@mA	µA	Vr		
MTA2264-YG	(Y)	GaAsP/GaP	Yellow Diff	38°	5.8	65	20	2.1	3.0	20	100	5	585
	(G)	GaP	Green Diff	38°	7.2	100	20	2.1	3.0	20	100	5	567
MTA2264-HRG	(HR)	GaAsP/GaP	Red Diff	38°	8.2	75	20	2.1	3.0	20	100	5	635
	(G)	GaP	Green Diff	38°	7.2	100	20	2.1	3.0	20	100	5	567
MTA4064-G	GaP	Green Diff	38°	7.2	100	20	2.1	3.0	20	100	5	567	
MTA4064-Y	GaAsP/GaP	Yellow Diff	38°	5.8	65	20	2.1	3.0	20	100	5	585	
MTA4064-HR	GaAsP/GaP	Red Diff	38°	8.2	75	20	2.1	3.0	20	100	5	635	



**marktech**  
**optoelectronics**

120 Broadway • Menands, New York 12204

Toll Free: (800) 98-4LEDS • Fax: (518) 432-7454