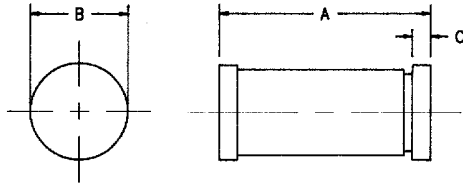


# 1 Amp Schottky Rectifier HSM150, HSM160



Dim.	Inches		Millimeter		Notes
	Minimum	Maximum	Minimum	Maximum	
A	.189	.205	4.80	5.20	Dia.
B	.094	.105	2.39	2.66	
C	.016	.022	.41	.55	

GLASS HERMETIC D0213AB

Microsemi Catalog Number	Working Peak Reverse Voltage	Repetitive Peak Reverse Voltage	
HSM150	50V	50V	<ul style="list-style-type: none"> <li>• Schottky Barrier Rectifier</li> <li>• Guard Ring Protection</li> <li>• 150°C Junction Temperature</li> <li>• V<sub>RRM</sub> 50 to 60 Volts</li> </ul>
HSM160	60V	60V	

Electrical Characteristics			
Average forward current	I <sub>F(AV)</sub> 1.0 Amps	T <sub>A</sub> = 118°C, Square wave, R <sub>θJC</sub> = 45°C/W	
Maximum surge current	I <sub>FSM</sub> 75 Amps	8.3ms, half sine, T <sub>J</sub> = 150°C	
Max peak forward voltage	V <sub>FM</sub> .51 Volts	I <sub>FM</sub> = 0.1A; T <sub>J</sub> = 25°C*	
Max peak forward voltage	V <sub>FM</sub> .69 Volts	I <sub>FM</sub> = 1.0A; T <sub>J</sub> = 25°C*	
Max peak reverse current	I <sub>RM</sub> 100 μA	V <sub>RRM</sub> , T <sub>J</sub> = 25°C	
Typical junction capacitance	C <sub>J</sub> 59pF	V <sub>R</sub> = 5.0V, T <sub>J</sub> = 25°C	
*Pulse test: Pulse width 300 μsec, Duty cycle 2%			

Thermal and Mechanical Characteristics		
Storage temperature range	T <sub>STG</sub>	-65°C to + 175°C
Operating junction temp range	T <sub>J</sub>	-65°C to + 150°C
Maximum thermal resistance	R <sub>θJC</sub>	45°C/W Junction to case
Weight		.0047 ounces (.012 grams) typical

PH: 303-469-2161  
FAX: 303-466-3775

**Microsemi Corp.**  
**Colorado**

C-11

# HSM150, HSM160

Figure 1  
Typical Forward Characteristics

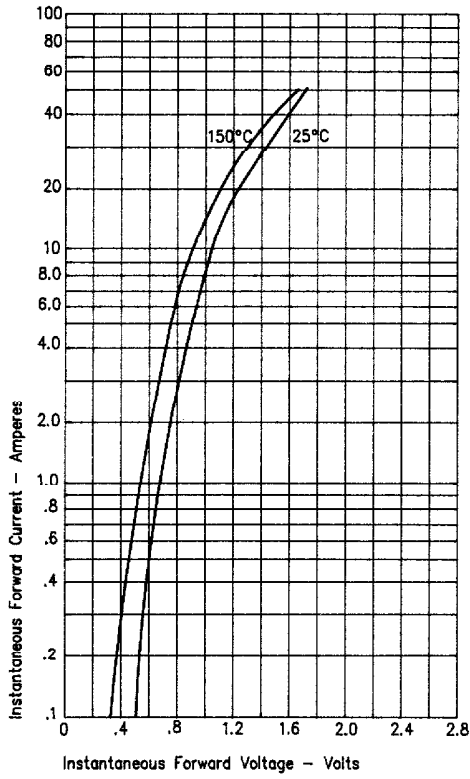


Figure 3  
Typical Junction Capacitance

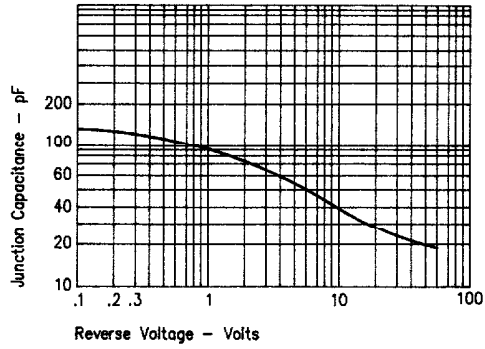


Figure 2  
Typical Forward Characteristics

