

## MU9C8358L/8338A Evaluation Kit

### APPLICATION BENEFITS

- Evaluation platform for MU9C8358L or MU9C8338A Ethernet Filter Interface
- Allows user to become familiar with the operation of the Ethernet Filter.
- Includes an easy to use GUI and sample C-code

### DISTINCTIVE CHARACTERISTICS

- Easy to use hardware uses the parallel port of any PC
- Easy to use Windows Interface allows LANCAM database to be viewed
- Hardware includes a RJ-45 connector and PHY, which allows network traffic to be received and filtered.
- A socketed MUSIC LANCAM is included



Figure 1: MU9C8358L Evaluation Board

## GENERAL DESCRIPTION

The MUSIC MU9C8358L/8338A Evaluation Kit is a hardware and software platform which allows either chip to be fully evaluated. It has an 8358L or 8338A Ethernet Filter, MUSIC LANCAM, 10/100 Mb PHY, RJ-45 connector, and a standard parallel port interface. A socket is provided which will allow the user to use the Low Voltage version LANCAM supplied with the kit or any device in the 3.3v LANCAM-L family. The board is plugged into a PC parallel port using the 25-pin connector that is provided. Four 38-pin high-density logic analyzer connectors are available which will allow all of the 8358L/8338A, LANCAM, and MII signals to be inspected. A 110V power adaptor is also provided. Figure 1 shows the 8358L version of the kit.

A Windows software tool is provided that will allow the

user to quickly inspect the LANCAM database. Entries that have been added to the database can be viewed in their raw 64-bit LANCAM form. Additionally, the four 16-bit segments are decoded and shown as an individual 48-bit Ethernet address, Time-stamp, Port ID and Permanent bit.

Some C-code files are also included that will allow the user to initialize the Filter and LANCAM. Once initialized, real network packets can be received through the RJ-45 connector. The user may add or delete entries, increase the Time-stamp value, and purge entries using the software registers or the INCR hardware pin. The user may also view the data that is available through the Result and Tag port(s). Figure 2 shows the CAMView Software tool that is supplied with the kit.

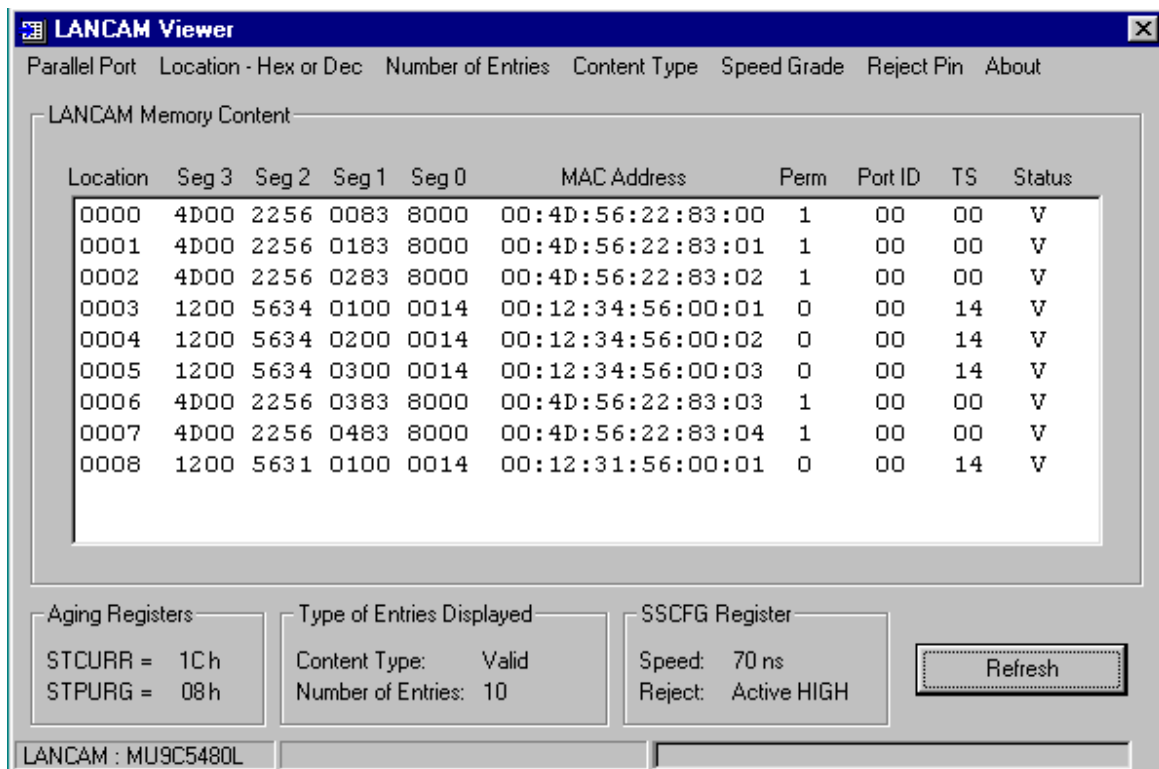


Figure 2: CAMView LANCAM Viewer Software Tool

The Evaluation kit will allow the user to develop initialization code and software maintenance routines. The simple C functions and C software program skeleton provided allows the kit hardware to be accessed using a standard C compiler. Due to the simple parallel port interface, the user may also develop their software using

other software languages by performing simple parallel port accesses. A typical user would use the kit to familiarize themselves using the supplied C code. This would involve initializing the board, transmitting packets to the board, and viewing the LANCAM database using the software GUI.

## EVALUATION KIT CONTENTS

- 6 inch x 6 inch Hardware PCB
  - 8358L or 8338A device fitted
  - LANCAM socket containing MU9C3480L
- 25-pin to 25-pin parallel port connector cable
- 110v to 5v 2.5A power supply
- Users Manual
- Software CD
  - CAMView Windows GUI
  - C functions and program skeleton
  - User Manual and other documentation in PDF format
  - Schematics in Orcad Version 7.2 format
  - FPGA Verilog code

<p><b>MUSIC Semiconductors' agent or distributor:</b></p>	<p>MUSIC Semiconductors reserves the right to make changes to its products and specifications at any time in order to improve on performance, manufacturability or reliability. Information furnished by MUSIC is believed to be accurate, but no responsibility is assumed by MUSIC Semiconductors for the use of said information, nor for any infringements of patents or of other third-party rights which may result from said use. No license is granted by implication or otherwise under any patent or patent rights of any MUSIC company. © Copyright 2001, MUSIC Semiconductors</p>
---	---

 <p><a href="http://www.musicsemi.com">http://www.musicsemi.com</a> email: <a href="mailto:info@musicsemi.com">info@musicsemi.com</a></p>	<p><b>Worldwide Headquarters</b> MUSIC Semiconductors 1521 California Circle Milpitas, CA 95035 USA Tel: 408 869-4600 Fax: 408 942-0837 USA Only: 800 933-1550 Tech Support 888 226-6874 Product Info</p>	<p><b>Asian Headquarters</b> MUSIC Semiconductors Special Export Processing Zone Carmelray Industrial Park Canlubang, Calamba, Laguna Philippines Tel: +63 49 549-1480 Fax: +63 49 549-1024 Sales Tel/Fax: +632 723-6215</p>	<p><b>European Headquarters</b> MUSIC Semiconductors P. O. Box 184 6470 ED Eygelshoven The Netherlands Tel: +31 43 455-2675 Fax: +31 43 455-1573</p>
--	---	--	--