

LVC MOS (1.8V) SJ-C1440 Series

PRELIMINARY

Description

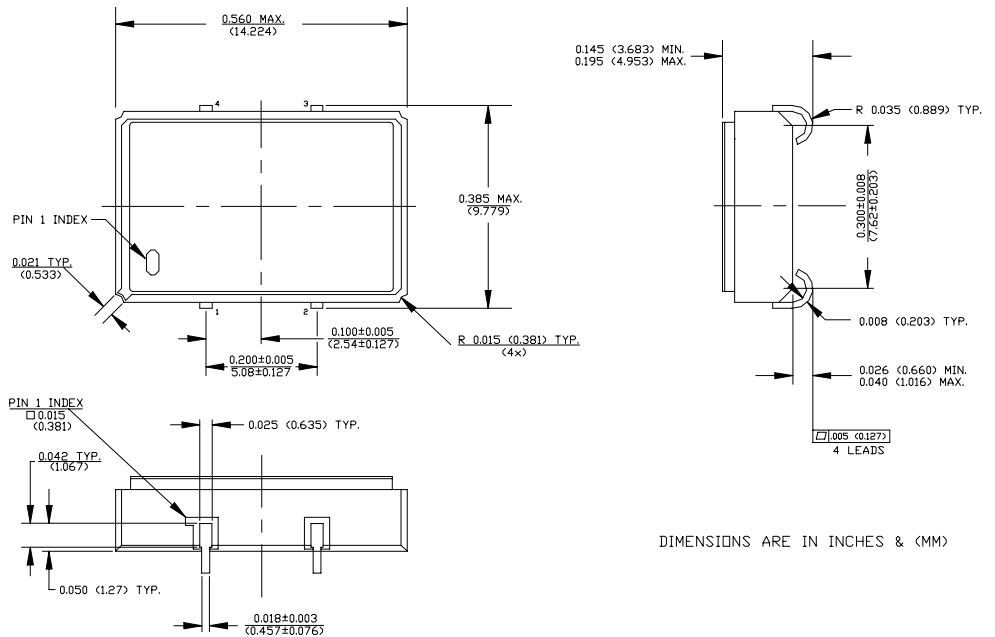
The **SJ-C1440 Series** of quartz crystal oscillators provide enable/disable 3-state LVC MOS compatible signals for bus connected systems. Supplying Pin 1 of the SJ-C1440 units with a logic "1" or open enables its pin 3 output. In the disabled mode, pin 3 presents a high impedance to the load.

Features

- Wide frequency range— 30.0MHz to 100.0MHz
- User specified tolerance available
- Will withstand vapor phase temperatures of 253°C for 4 minutes maximum
- Space-saving alternative to discrete component oscillators
- High shock resistance, to 3000g
- Metal lid electrically connected to ground to reduce EMI
- High Q Crystal actively tuned oscillator circuit
- High Reliability - NEL HALT/HASS qualified for crystal oscillator start-up conditions
- Low Jitter - Wavecrest jitter characterization available
- 1.8Volt operation
- Power supply decoupling internal
- No internal PLL avoids cascading PLL problems
- Low power consumption
- Gold plated leads

Electrical Connection

Pin	Connection
1	Enable Input
2	Grd & Case
3	Output
4	V _{DD}



DIMENSIONS ARE IN INCHES & (MM)

