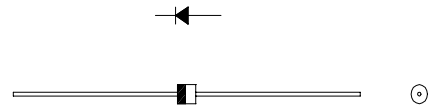


# FRD Type :10ELS2

## FEATURES

- \* Miniature Size
- \* Fast Recovery and Low Price
- \* High Surge Capability
- \* 100volts trough 600volts Types Available
- \* 26mm and 52mm Inside Tape Spacing

## OUTLINE DRAWING



## Maximum Ratings

Approx Net Weight:0.17g

Rating		Symbol	10ELS2			Unit
Repetitive Peak Reverse Voltage		$V_{RRM}$	200			V
Non-repetitive Peak Reverse Voltage		$V_{RSM}$	400			V
Average Rectified Output Current	P.C.Board Mounted *	$I_O$	1	$T_a=26^{\circ}C$	Half Sine Wave Resistive Load	A
RMS Forward Current		$I_{F(RMS)}$	1.57			A
Surge Forward Current		$I_{FSM}$	30	Half Sine Wave, 1cycle, Non-repetitive		A
Operating Junction Temperature Range		$T_{jw}$	- 40 to + 150			$^{\circ}C$
Storage Temperature Range		$T_{stg}$	- 40 to + 150			$^{\circ}C$

## Electrical • Thermal Characteristics

Characteristics	Symbol	Conditions	Min	Typ	Max	Unit
Peak Reverse Current	$I_{RM}$	$T_j= 25^{\circ}C, V_{RM}= V_{RRM}$	-	-	10	$\mu A$
Peak Forward Voltage	$V_{FM}$	$T_j= 25^{\circ}C, I_{FM}= 1 A$	-	-	1.1	V
Reverse Recovery Time	$t_{rr}$	$I_{FM}= 1 A, -di/dt= 50 A/\mu s, T_a= 25^{\circ}C$	-	-	150	ns
Thermal Resistance	$R_{th(j-a)}$	Without Fin or P.C.Board*	-	-	100	$^{\circ}C/W$

\*:L=3mm, Print Lands = 7x7 mm, Both Sides

10ELS2 OUTLINE DRAWING (Dimensions in mm)

