

QUAD SINGLE-SUPPLY OPERATIONAL AMPLIFIER

■ **GENERAL DESCRIPTION**

The NJM2902 consists of four independent high-gain operational amplifiers that are designed for single-supply operation.

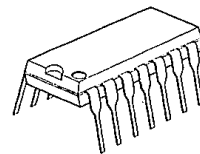
Operation from split power supplies is also possible and the low power supply drain is independent of the magnitude of the power supply voltage.

Used with a dual supply the circuit will operate over a wide range of supply voltages. However, a large amount of crossover distortion may occur with loads to ground. An external current-sinking resistor to $-V_s$ will reduce crossover distortion. There is no crossover distortion problem in single-supply operation if the load is direct-coupled to ground.

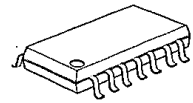
■ **FEATURES**

- Single Supply
- Operating Voltage (+3V ~ +30V)
- High Output Voltage ($V^+ - 2V$)
- Slew Rate ($0.5V/\mu s$ typ.)
- Low Operating Current (1mA typ.)
- Package Outline DIP14, DMP14, SSOP14
- Bipolar Technology

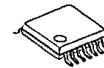
■ **PACKAGE OUTLINE**



NJM2902N

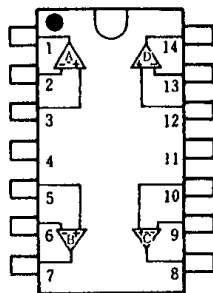


NJM2902M



NJM2902V

■ **PIN CONFIGURATION**

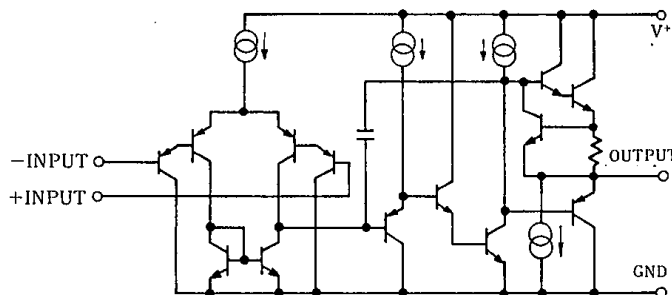


NJM2902N
NJM2902M
NJM2902V

PIN FUNCTION

- | | |
|-------------------|--------------|
| 1 .A OUTPUT | 8 .C OUTPUT |
| 2 .A-INPUT | 9 .C-INPUT |
| 3 .A+INPUT | 10 .C+INPUT |
| 4 .V ⁺ | 11 .GND |
| 5 .B+INPUT | 12 .D+INPUT |
| 6 .B-INPUT | 13 .D-INPUT |
| 7 .B OUTPUT | 14 .D OUTPUT |

■ **EQUIVALENT CIRCUIT (1/4 Shown)**



■ ABSOLUTE MAXIMUM RATINGS

(Ta=25°C)

PARAMETER	SYMBOL	RATINGS	UNIT
Supply Voltage	$V^+(V^+/V^-)$	32(or ± 16)	V
Differential Input Voltage	V_{ID}	32	V
Input Voltage	V_{IC}	-0.3~+32 (note)	V
Power Dissipation	P_D	(DIP14) 570	mW
		(DMP14) 300	mW
		(SSOP14) 300	mW
Operating Temperature Range	T_{opr}	-40~+85	°C
Storage Temperature Range	T_{stg}	-50~+125	°C

■ ELECTRICAL CHARACTERISTICS

(Ta=25°C V+=5V)

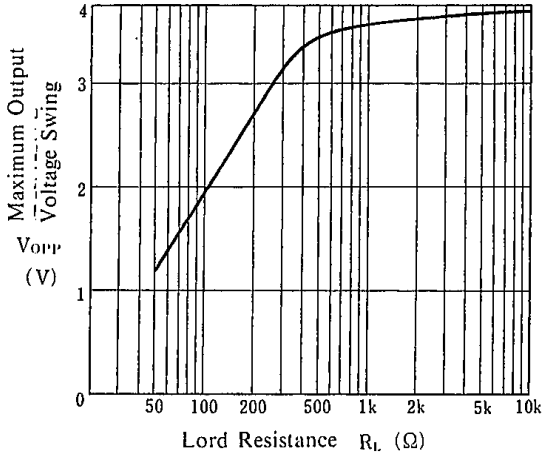
PARAMETER	SYMBOL	TEST CONDITION	MIN.	TYP.	MAX.	UNIT
Input Offset Voltage	V_{IO}	$R_S=0\Omega$	—	2	10	mV
Input Offset Current	I_{IO}	$I_{IN^+} - I_{IN^-}$	—	5	50	nA
Input Bias Current	I_B	I_{IN^+} or I_{IN^-}	—	20	500	nA
Large Signal Voltage Gain	A_V	$R_L \geq 2k\Omega$	—	100	—	V/mV
Maximum Output Voltage Swing	V_{OM}	$R_L=2k\Omega$	3.5	—	—	V
Input Common Mode Voltage Range	V_{ICM}		0~3.5	—	—	V
Common Mode Rejection Ratio	CMR		—	85	—	dB
Supply Voltage Rejection Ratio	SVR		—	100	—	dB
Output Source Current	I_{SOURCE}	$V_{IN^+}=1V, V_{IN^-}=0V$	20	40	—	mA
Output Sink Current	I_{SINK}	$V_{IN^+}=0V, V_{IN^-}=1V$	8	20	—	mA
Channel Separation	CS	$f=1k\sim 20kHz$, Input Referred	—	120	—	dB
Operating Current	I_{CC}	$R_L=\infty$	—	1	2	mA
Slew Rate	SR	$V^+/V^- = \pm 15V$	—	0.5	—	V/ μs
Gain Bandwidth Product	GB	$V^+/V^- = \pm 15V$	—	0.5	—	MHz

4

■ TYPICAL CHARACTERISTICS

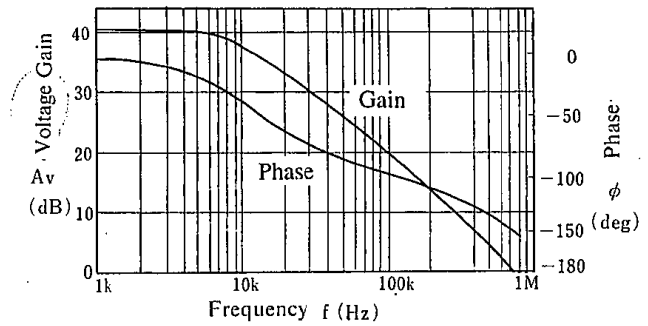
Maximum Output Voltage Swing vs. Load Resistance

($V^+ = 5V, T_a = 25^\circ C$)



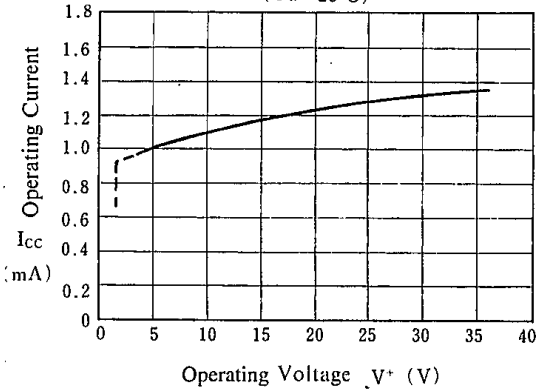
Voltage Gain, Phase vs. Frequency

($V^+/V^- = \pm 15V, R_L = \infty, 40dB/Amp, T_a = 25^\circ C$)

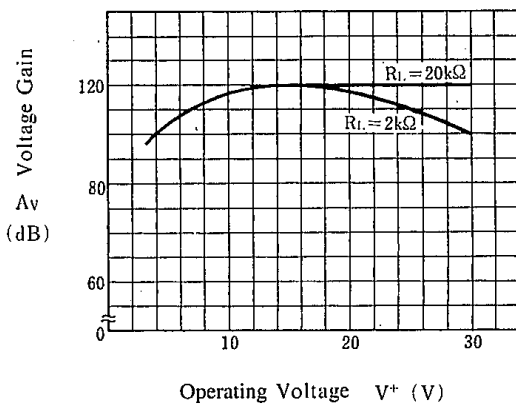


Operating Current vs. Operating Voltage

($T_a = 25^\circ C$)

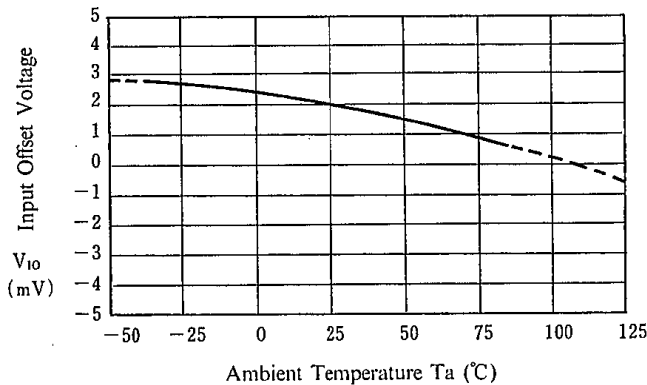


Voltage Gain vs. Operating Voltage



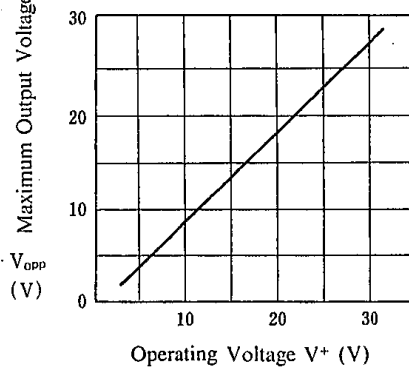
Input Offset Voltage vs. Temperature

($V^+ = 5V$)



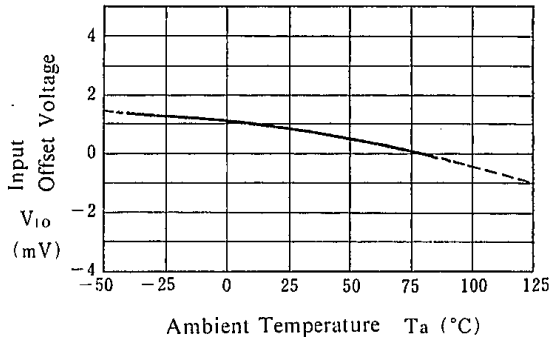
Maximum Output Voltage vs. Operating Voltage

($R_L = 2k\Omega, T_a = 25^\circ C$)

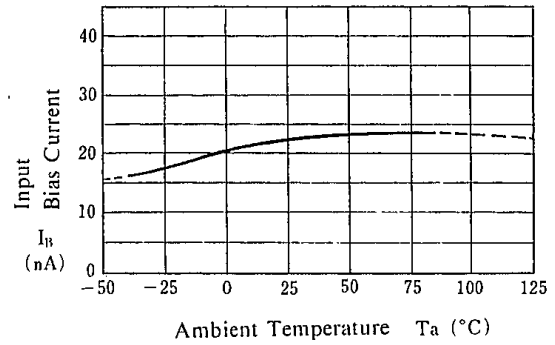


■ TYPICAL CHARACTERISTICS

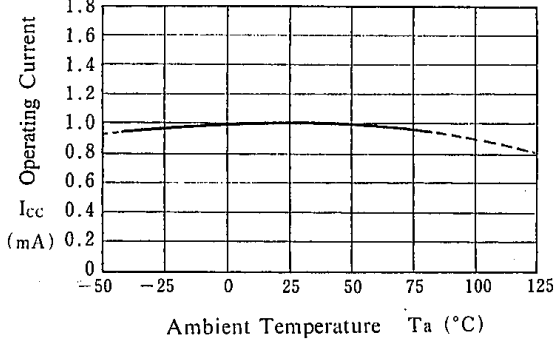
Input Offset Voltage vs. Temperature
($V^+ = 5\text{ V}$)



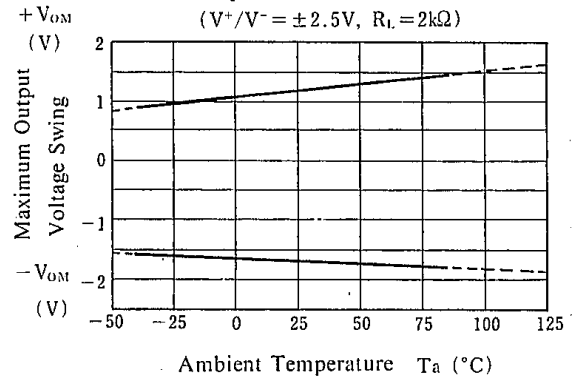
Input Bias Current vs. Temperature
($V^+ = 5\text{ V}$)



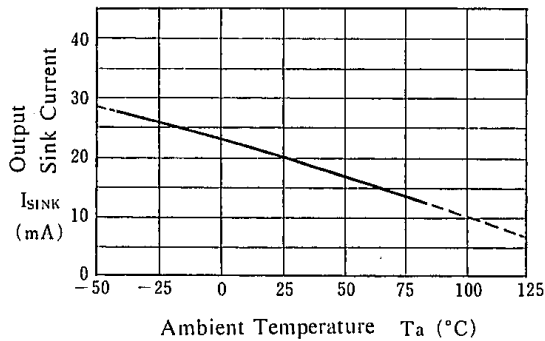
Operating Current vs. Temperature
($V^+ = 5\text{ V}$)



Maximum Output Voltage Swing vs. Temperature
($V^+/V^- = \pm 2.5\text{ V}$, $R_L = 2\text{ k}\Omega$)

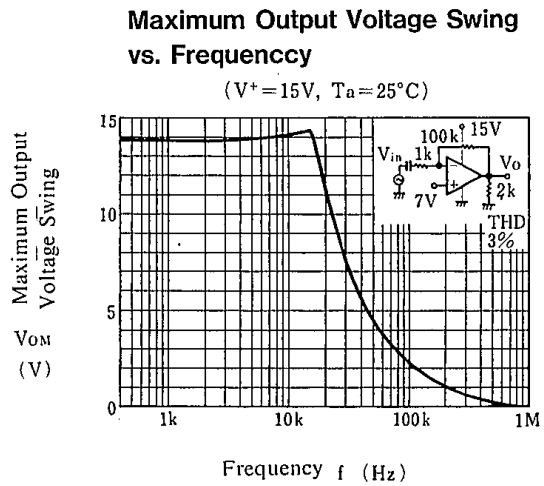
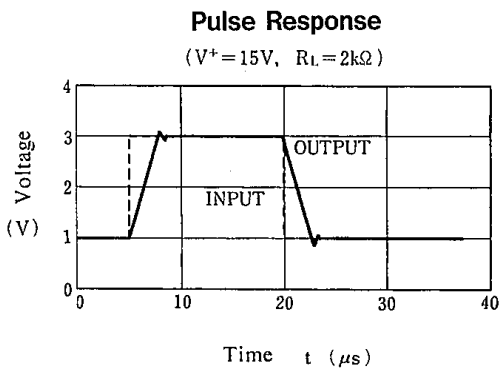
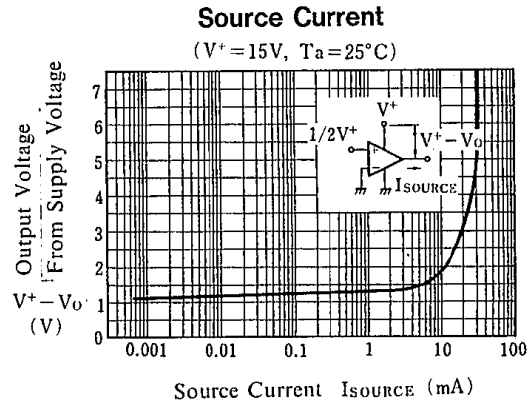
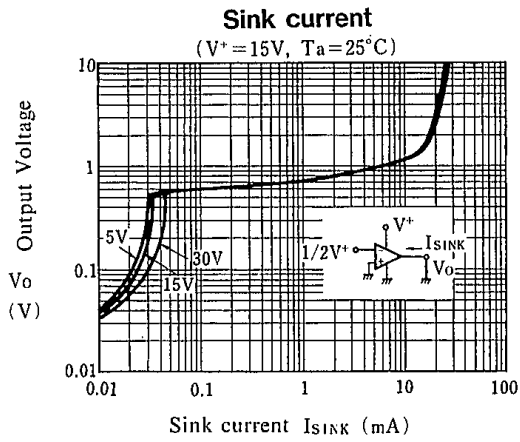


Output Sink Current vs. Temperature
($V^+ = 5\text{ V}$)



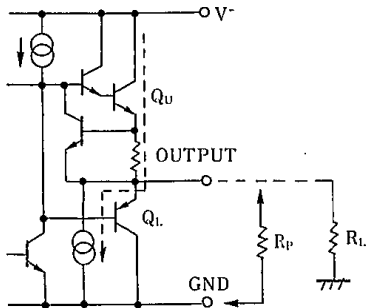
4

TYPICAL CHARACTERISTICS



■ APPLICATION

Improvement of Cross-over Distortion
Equivalent circuit at the output stage

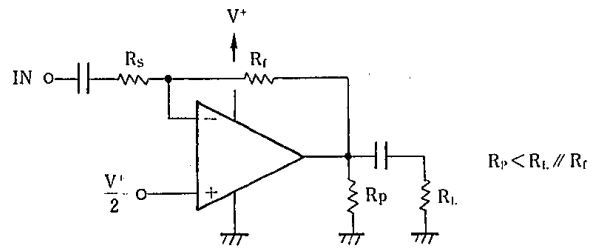
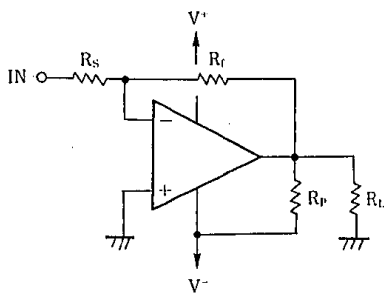


NJM2902, in its static state (No in and output condition) when design, Q_U being biased by constant current (break down beam) yet, Q_L stays OFF.

While using with both power source mode, the cross-over distortion might occur instantly when Q_L ON.

There might be cases when application for amplifier of audio signals, not only distortion but also the apparent frequency bandwidth being narrowed remarkably.

It is advisable especially when using both power source mode, constantly to use with higher current on Q_U than the load current (including feedback current), and then connect the pull-down resistor R_P at the part between output and GND pins.



4

NJM2902

MEMO

[CAUTION]

The specifications on this databook are only given for information, without any guarantee as regards either mistakes or omissions. The application circuits in this databook are described only to show representative usages of the product and not intended for the guarantee or permission of any right including the industrial rights.