

CGS74B2525 1-to-8 Minimum Skew Clock Driver

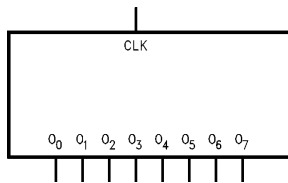
General Description

This minimum skew clock driver is designed for Clock Generation and Support (CGS) applications operating well above 20 MHz (33 MHz, 50 MHz). The device guarantees minimum output skew across the outputs of a given device and also from device-to-device. Skew parameters are also provided as a means to measure duty cycle requirements as those found in high speed clocking systems. The 'B2525 is a minimum skew clock driver with one input driving eight outputs specifically designed for signal generation and clock distribution applications.

Features

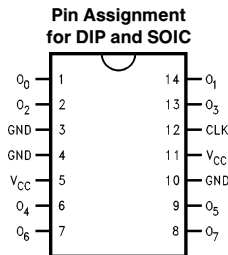
- Clock Generation and Support (CGS) Device—Ideal for high frequency signal generation or clock distribution applications
- CGS74B version features National's Advanced Bipolar FAST® LSI process
- 1-to-8 low skew clock distribution
- 600 ps pin-to-pin output skew
- Specifications for device-to-device variation of propagation delay
- Specification for transition skew to meet duty cycle requirements
- Center pin V_{CC} and GND configuration to minimize high speed switching noise
- Current sourcing 48 mA and current sinking of 64 mA
- Low dynamic power consumption above 20 MHz
- Guaranteed 4 kV ESD protection

Logic Symbol



TL/F/10907-1

Connection Diagram



TL/F/10907-2

FAST® and TRI-STATE® are registered trademarks of National Semiconductor Corporation.

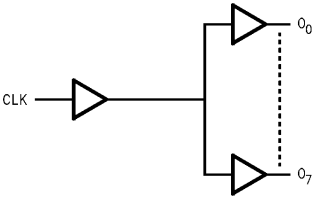
Functional Description

Pin Description

Pin Names	Description
CLK	Clock Input
O ₀ -O ₇	Outputs

Truth Table

Inputs	Outputs
CLK	O ₀ -O ₇
L	L
H	H



TL/F/10907-5

Absolute Maximum Ratings (Note 1)

If Military/Aerospace specified devices are required, please contact the National Semiconductor Sales Office/Distributors for availability and specifications.

Supply Voltage (V_{CC})	7.0V
Input Voltage (V_i)	7.0V
Operating Free Air Temperature	0°C to +70°C
Storage Temperature Range	-65°C to +150°C
Junction Temperature (θ_{JA})	
Plastic (N) Package	104 °C/W
JEDEC SOIC (M) Package	120 °C/W

Recommended Operating Conditions

Supply Voltage (V_{CC})	4.5V to 5.5V
Input Rise and Fall Times (0.8V to 2.0V)	9.6 ns max
Free Air Operating Temperature (T_A)	0°C to +70°C

Note 1: The Absolute Maximum Ratings are those values beyond which the safety of the device cannot be guaranteed. The device should not be operated at these limits. The parametric values defined in the DC and AC Electrical Characteristics tables are not guaranteed at the absolute maximum ratings. The Recommended Operating Conditions will define the conditions for actual device operation.

DC Electrical Characteristics

over recommended operating conditions unless specified otherwise. All typical values are measured at $V_{CC} = 5V$, $T_A = 25^\circ C$.

Symbol	Parameter	Conditions	Min	Typ	Max	Units
V_{IK}	Input Clamp Voltage	$V_{CC} = 4.5V$, $I_I = -18\text{ mA}$			-1.2	V
V_{IH}	Minimum Input High Level Voltage		2.0			V
V_{IL}	Maximum Input Low Level Voltage				0.8	V
V_{OH}	High Level Output Voltage	$I_{OH} = -3\text{ mA}$, $V_{CC} = 4.5V$	2.4			V
		$I_{OH} = -48\text{ mA}$, $V_{CC} = 4.5V$	2.0			
V_{OL}	Low Level Output Voltage	$V_{CC} = 4.5V$, $I_{OL} = 64\text{ mA}$		0.35	0.5	V
I_I	Input Current @ Max Input Voltage	$V_{CC} = 5.5V$, $V_{IH} = 7V$			0.1	mA
I_{IH}	High Level Input Current	$V_{CC} = 5.5V$, $V_{IH} = 2.7V$			20	μA
I_{IL}	Low Level Input Current	$V_{CC} = 5.5V$, $V_{IH} = 0.4V$			-0.5	mA
I_O	Output Drive Current	$V_{CC} = 5.5V$, $V_O = 2.25V$	-50		-150	mA
I_{CC}	Supply Current	$V_{CC} = 5.5V$	Outputs High	8	15	mA
			Outputs Low	32	42	mA
C_{IN}	Input Capacitance	$V_{CC} = 5V$		5		pF

AC Electrical Characteristics

Over recommended operating conditions unless specified otherwise.

Symbol	Parameter	CGS74B2525			Units
		V _{CC} = 4.5V to 5.5V R _L = 500Ω, C _L = 50 pF			
		Min	Typ	Max	
t _{PLH}	Propagation Delay	2	3.0	4.8	ns
t _{PHL}	CLK to O _n	2	3.0	4.8	

Extended AC Electrical Characteristics

Over recommended operating conditions unless specified otherwise.

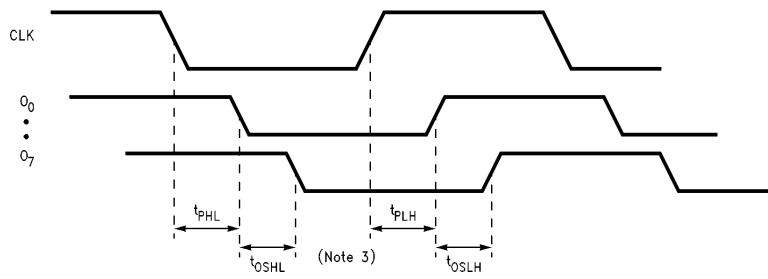
Symbol	Parameter	CGS74B2525			Units
		V _{CC} = 4.5V to 5.5V R _L = 500Ω, C _L = 50 pF, T _A = 0°C to 70°C			
		Min	Typ	Max	
f _{max}	Maximum Operating Frequency	50			MHz
t _{OSSL}	Maximum Skew Common Edge Output-to-Output Variation (Note 2)		150	600	ps
t _{OSLH}	Maximum Skew Common Edge Output-to-Output Variation (Note 2)		150	600	ps
t _{OSt}	Maximum Skew Opposite Edge Output-to-Output Variation (Note 2)		0.7	1.5	ns
t _{pV}	Maximum Skew Part-to-Part Variation Skew (Note 3)			1.75	ns
t _{pS}	Maximum Skew Pin (Signal) Transition Variation (Note 2)		0.6	1.5	ns
t _{rise} , t _{fall}	Maximum Rise/Fall Time (from 0.8V to 2.0V/2.0V to 0.8V)			1.6 1.4	ns ns

Note 2: Output-to-Output Skew is defined as the absolute value of the difference between the actual propagation delay for any outputs within the same packaged device. The specifications apply to any outputs switching in the same direction either HIGH to LOW (t_{OSSL}) or LOW to HIGH (t_{OSLH}) or in opposite directions both HL and LH (t_{OSt}). Parameters t_{OSt} and t_{pS} guaranteed by design. t_{OSSL} and t_{OSLH} are characterized and guaranteed by design @ 1 MHz.

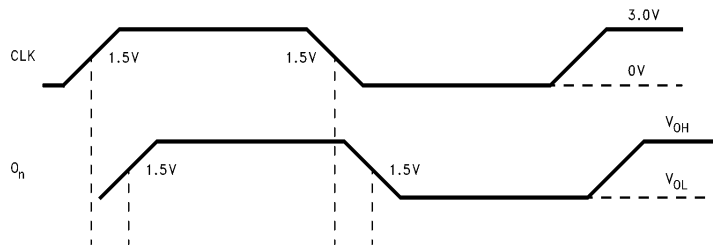
Note 3: Part-to-part skew is defined as the absolute value of the difference between the propagation delay for any outputs from device to device. The parameter is specified for a given set of conditions (i.e., capacitive load, V_{CC}, temperature, # of outputs switching, etc.). Parameter guaranteed by design.

Note 4: Load capacitance includes the test jig.

Timing Diagrams

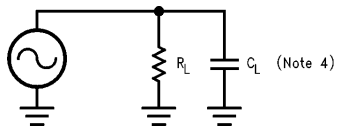


TL/F/10907-16



TL/F/10907-17

Test Circuit

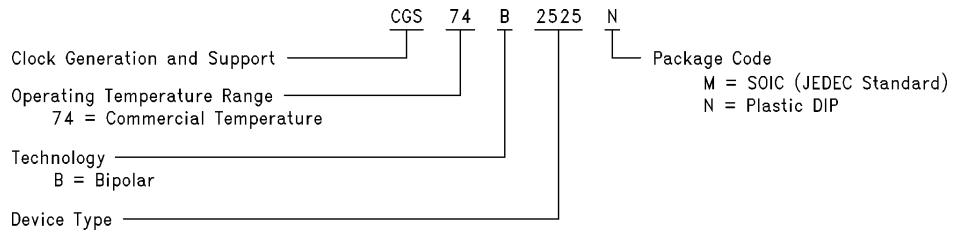


R_L is 500 Ω
 C_L is 50 pF for all prop delays and skew measurements

TL/F/10907-18

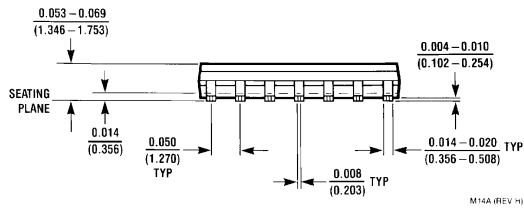
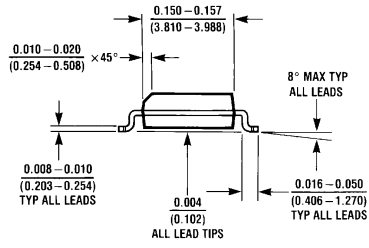
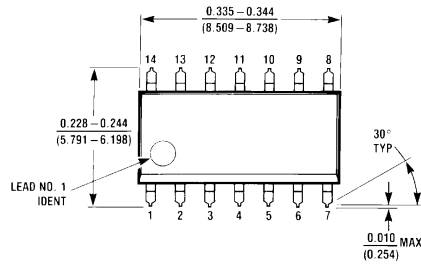
Ordering Information

The device number is used to form part of a simplified purchasing code where the package type and temperature range are defined as follows:



TL/F/10907-19

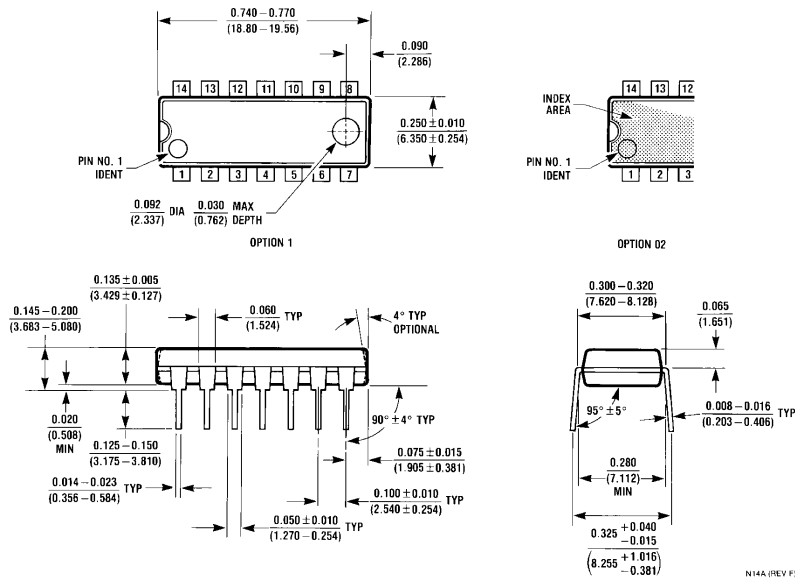
Physical Dimensions inches (millimeters)



**14-Lead Small Outline Integrated Circuit
NS Package Number M14A**

M14A (REV H)

Physical Dimensions inches (millimeters) (Continued)



**14-Lead Plastic Dual-In-Line Package
NS Package Number N14A**

N14A (REV F)

LIFE SUPPORT POLICY

NATIONAL'S PRODUCTS ARE NOT AUTHORIZED FOR USE AS CRITICAL COMPONENTS IN LIFE SUPPORT DEVICES OR SYSTEMS WITHOUT THE EXPRESS WRITTEN APPROVAL OF THE PRESIDENT OF NATIONAL SEMICONDUCTOR CORPORATION. As used herein:

1. Life support devices or systems are devices or systems which, (a) are intended for surgical implant into the body, or (b) support or sustain life, and whose failure to perform, when properly used in accordance with instructions for use provided in the labeling, can be reasonably expected to result in a significant injury to the user.
2. A critical component is any component of a life support device or system whose failure to perform can be reasonably expected to cause the failure of the life support device or system, or to affect its safety or effectiveness.



National Semiconductor Corporation
1111 West Bardin Road
Arlington, TX 76017
Tel: 1(800) 272-9959
Fax: 1(800) 737-7018

National Semiconductor Europe
Fax: (+49) 0-180-530 85 86
Email: cnjwge@tevm2.nsc.com
Deutsch Tel: (+49) 0-180-530 85 85
English Tel: (+49) 0-180-532 78 32
Français Tel: (+49) 0-180-532 93 58
Italiano Tel: (+49) 0-180-534 16 80

National Semiconductor Hong Kong Ltd.
13th Floor, Straight Block,
Ocean Centre, 5 Canton Rd.
Tsimshatsui, Kowloon
Hong Kong
Tel: (852) 2737-1600
Fax: (852) 2736-9960

National Semiconductor Japan Ltd.
Tel: 81-043-299-2309
Fax: 81-043-299-2408