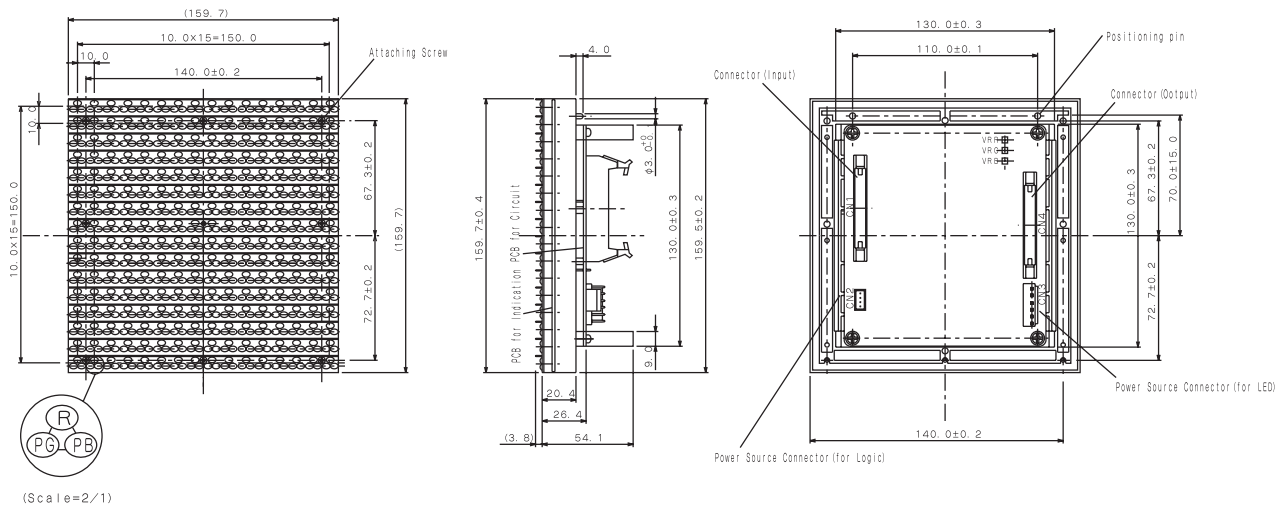


FULL COLOR PANEL DISPLAY UNITS

160 × 160 mm

10 mm 16 × 16 Dots LNP728021

Outline Drawing



Absolute Maximum Ratings (Ta = 25°C)

Item	Symbol	Ratings	Unit
Supply Voltage for Logic	V _{CC}	- 0.3 ~ + 5.25	V
Supply Voltage for LED	V _{LED}	R: + 3.2 PG: + 5.0 PB: + 5.0	V
Input Voltage	V _{in}	- 0.3 ~ V _{CC} + 0.3	V
Operating Ambient Temperature	T _{opr}	- 20 ~ + 45	°C
Storage Temperature	T _{stg}	- 30 ~ + 80	°C

Main Specifications (Ta = 25°C)

Item	Symbol	Ratings	Unit	
Display Colors		Full Color (Red, Green, Blue)		
Display Surface Size		160 × 160	mm	
Dot Total Number		256 (10 16 × 16)		
Dot Structure		R:1 PG:1 PB:1		
Dots Pitch		10.0	mm	
Brightness(when lighting all lamps)	B	(W):5000	cd/m ²	
Area Gradation		R:PG:PB 256 gradation for each color		
Peak Emission Wavelength (Typ)	λ _p	R:620 PG:525 PB:468	nm	
Viewing Angle (50% Luminous)	2θ 1/2	Level 120, Up10, Down30	°	
Operating Method		1/4(Duty) Dynamic lighting		
Date Forward Frequency		8	MHz	
Clock Frequency		500	KHz	
for Logic	Supply Voltage	V _{CC}	5.0 ± 0.25	V
	Supply Current	I _{CC}	Max 0.5	A
for LED	Supply Voltage	V _R	3.0	V
		V _{PG} · V _{PB}	4.8	
	Supply Current	I _R	Max 3.4	A
		I _{PG}	Max 2.5	
I _{PB}		Max 1.0		
Mass			610	g