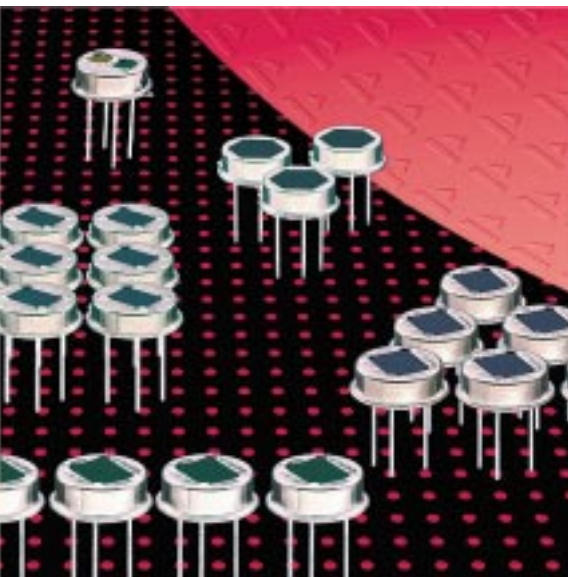


Pyroelectric Infrared Detectors

Dual Element Detector LHi 2068

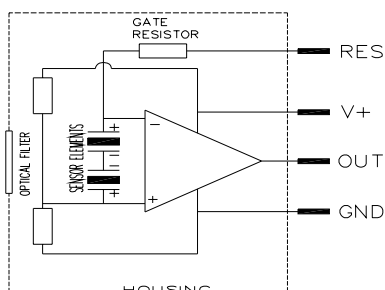


NEW: Integrated amplifier

High output signal

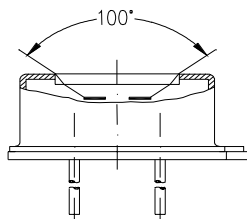
Design for special alarm applications

The **LHi 2068** pyroelectric infrared-detector is a new unique design with dual element configuration and integrated amplifier. Two elements are connected in series and feed the signal into an operational amplifier. It offers a highly stable responsivity with excellent common mode performance (match) and low noise, with extended frequency performance .

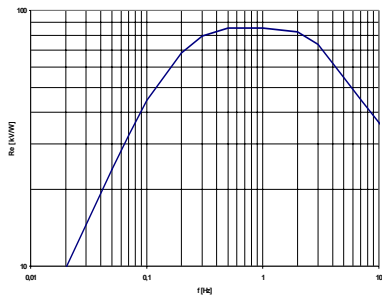


Parameters	LHi 2068			units	condition
	min	typical	max		
Element size	2x1			mm ²	(2 elements)
Responsivity	50	90		kV/W	100°C, 1 Hz
Match	1 10			%	
Noise	0,5	0,75		mVpp	25°C, 0,3...10Hz

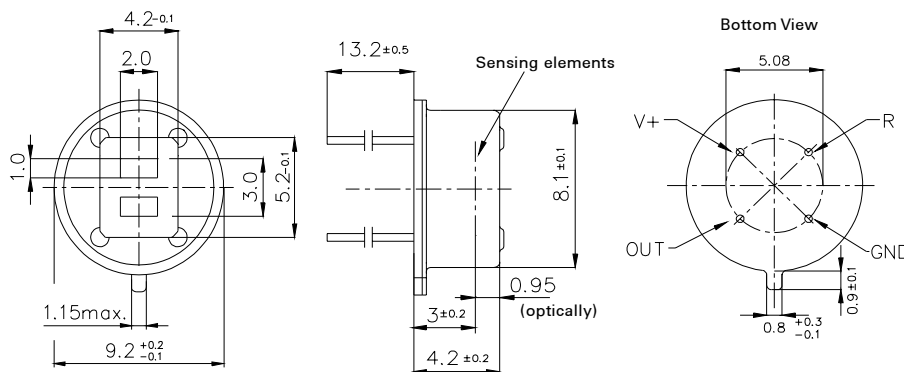
NEP	8,1x10 ⁻¹⁰	25x10 ⁻¹⁰	W √Hz	1Hz Bw, 100°C, 1 Hz
D*	5,6x10 ⁷	17,5x10 ⁷	cm √Hz/W	1Hz Bw, 100°C, 1 Hz
Operating Voltage	4	16	V	25°C
Field of View, horizontal	110°			unobstructed
vertical	110°			unobstructed
Operating Temp.	-40	85	°C	non permanent
Storage Temperature	-40	85	°C	non permanent



Field of View



Frequency Response



Dimensions in mm

Right for modification reserved / WS / 29.6.2001

Europe:
PerkinElmer Optoelectronics GmbH
 Wenzel Jaksch Str 31
 Wiesbaden / Germany
 Phone +49(0)611 492 0
 Fax +49(0)611 492 170

USA:
PerkinElmer Optoelectronics
 2175 Mission College Blvd
 Santa Clara, CA 95054
 Phone +408 565 0830
 Fax +408 565 0703

Asia:
PerkinElmer Optoelectronics
 47, Ayer Rajah Crescent #06-12
 Singapore 139947
 Phone +65 775 2022
 Fax +65 775 1008

