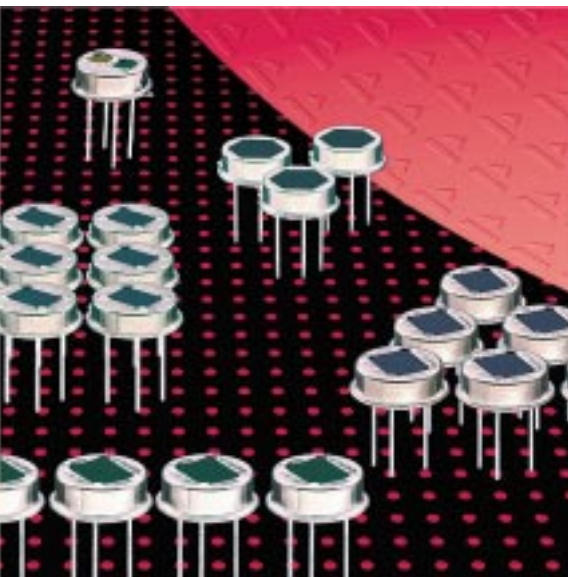


Pyroelectric Infrared Detectors

Single Element Detector LHi 907



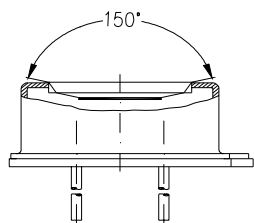
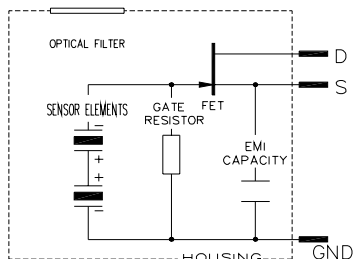
Round element design with compensation

Single FET output

Designed for ceiling mount applications

The **LHi 907** pyroelectric infrared-detector is a special design for motion control in ceiling mount applications. It includes a pyroelectric ceramic with a round sensitive element connected to one FET in source follower connection, and a compensational second element.

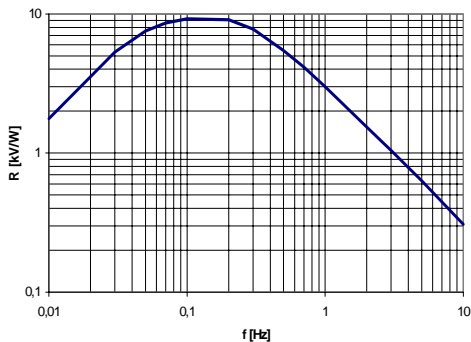
This detector is available in TO-5 housing with a standard infrared filter. It offers low noise, and special field of view and capture for ceiling mount applications.



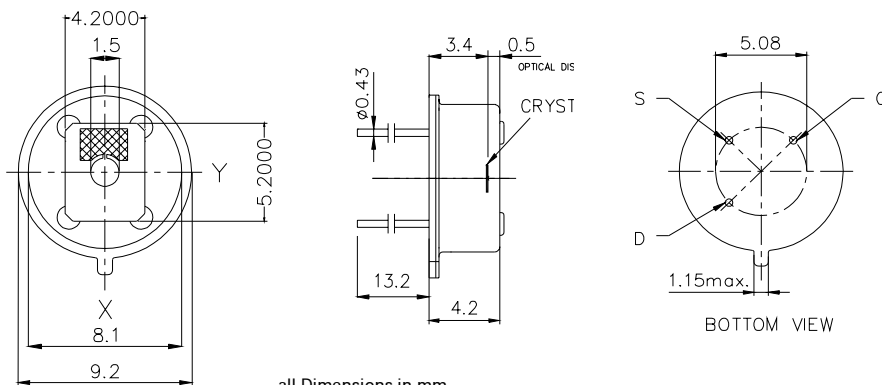
Field of View

Parameters	LHi 907			units	condition
	min	typical	max		
Element size	1,77			mm ²	(1 element)
Responsivity	3300	4000		V/W	100°C, 1 Hz
Noise		20	50	µVpp	25°C, 0,3...10Hz
Offset Voltage	0,2		1,5	V	R _s =47kΩ, 25°C
NEP		7,5x10 ⁻¹⁰	23x10 ⁻¹⁰	W √Hz	1Hz Bw, 100°C, 1 Hz
D*	6x10 ⁷	19x10 ⁷		cm √Hz/W	1Hz Bw, 100°C, 1 Hz
Output Impedance		5	10	kΩ	R _s =47kΩ, 25°C
Operating Voltage	2		15	V	R _s =47kΩ, 25°C
Field of View, horizontal		150°			unobstructed
Field of View, vertical		145°			unobstructed
Operating Temp.	-40		85	°C	non permanent
Storage Temperature	-40		85	°C	non permanent

Right for modification reserved / WS / 29.6.2001



Frequency Response



all Dimensions in mm

Europe:
PerkinElmer Optoelectronics GmbH
 Wenzel Jaksch Str 31
 Wiesbaden / Germany
 Phone +49(0)611 492 0
 Fax +49(0)611 492 170

USA:
PerkinElmer Optoelectronics
 2175 Mission College Blvd
 Santa Clara, CA 95054
 Phone +408 565 0830
 Fax +408 565 0703

Asia:
PerkinElmer Optoelectronics
 47, Ayer Rajah Crescent #06-12
 Singapore 139947
 Phone +65 775 2022
 Fax +65 775 1008

