

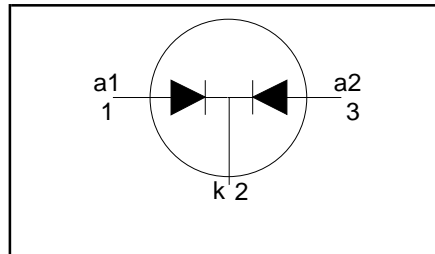
**Rectifier diodes  
ultrafast, rugged**

**BYV72EW series**

**FEATURES**

- Low forward volt drop
- Fast switching
- Soft recovery characteristic
- Reverse surge capability
- High thermal cycling performance
- Low thermal resistance

**SYMBOL**



**QUICK REFERENCE DATA**

|                                     |
|-------------------------------------|
| $V_R = 150\text{ V} / 200\text{ V}$ |
| $V_F \leq 0.85\text{ V}$            |
| $I_{O(AV)} = 30\text{ A}$           |
| $I_{RRM} = 0.2\text{ A}$            |
| $t_{tr} \leq 28\text{ ns}$          |

**GENERAL DESCRIPTION**

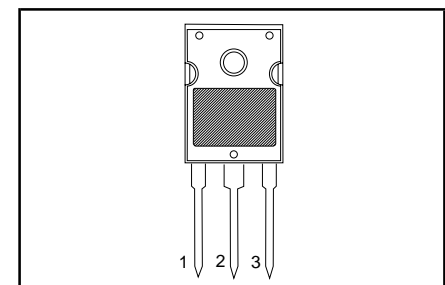
Dual, ultra-fast, epitaxial rectifier diodes intended for use as output rectifiers in high frequency switched mode power supplies.

The BYV72EW series is supplied in the conventional leaded SOT429 (TO247) package.

**PINNING**

| PIN | DESCRIPTION |
|-----|-------------|
| 1   | anode 1     |
| 2   | cathode     |
| 3   | anode 2     |
| tab | cathode     |

**SOT429 (TO247)**



**LIMITING VALUES**

Limiting values in accordance with the Absolute Maximum System (IEC 134).

| SYMBOL      | PARAMETER  | CONDITIONS  | MIN. | MAX.    |      | UNIT             |
|-------------|--|---|------|---------|------|------------------|
|             |  |   |      | BYV72EW |      |                  |
| $V_{RRM}$   | Peak repetitive reverse voltage  | $T_{mb} \leq 144\text{ }^\circ\text{C}$   | -    | -150    | -200 | V                |
| $V_{RWM}$   | Crest working reverse voltage  |   | -    | 150     | 200  | V                |
| $V_R$       | Continuous reverse voltage   |   | -    | 150     | 200  | V                |
| $I_{O(AV)}$ | Average rectified output current (both diodes conducting) <sup>1</sup> | square wave<br>$\delta = 0.5; T_{mb} \leq 104\text{ }^\circ\text{C}$                  | -    | 30      |      | A                |
| $I_{FRM}$   | Repetitive peak forward current per diode                              | $t = 25\text{ }\mu\text{s}; \delta = 0.5;$<br>$T_{mb} \leq 104\text{ }^\circ\text{C}$ | -    | 30      |      | A                |
| $I_{FSM}$   | Non-repetitive peak forward current per diode                          | $t = 10\text{ ms}$  | -    | 150     |      | A                |
|             |  | $t = 8.3\text{ ms}$<br>sinusoidal; with reapplied<br>$V_{RWM(max)}$                   | -    | 160     |      | A                |
| $I_{RRM}$   | Repetitive peak reverse current per diode                              | $t_p = 2\text{ }\mu\text{s}; \delta = 0.001$  | -    | 0.2     |      | A                |
| $I_{RSM}$   | Non-repetitive peak reverse current per diode                          | $t_p = 100\text{ }\mu\text{s}$  | -    | 0.2     |      | A                |
| $T_{stg}$   | Storage temperature  |   | -40  | 150     |      | $^\circ\text{C}$ |
| $T_j$       | Operating junction temperature   |   | -    | 150     |      | $^\circ\text{C}$ |

1 Neglecting switching and reverse current losses.

**ESD LIMITING VALUE**

| SYMBOL | PARAMETER                                 | CONDITIONS   | MIN. | MAX. | UNIT |
|--------|---|--|------|------|------|
| $V_C$  | Electrostatic discharge capacitor voltage | Human body model;<br>$C = 250\text{ pF}; R = 1.5\text{ k}\Omega$ | -    | 8    | kV   |

---

**Rectifier diodes  
ultrafast, rugged**


---

**BYV72EW series****THERMAL RESISTANCES**

| SYMBOL         | PARAMETER                                    | CONDITIONS                            | MIN. | TYP. | MAX. | UNIT |
|----------------|--|---------------------------------------|------|------|------|------|
| $R_{th\ j-mb}$ | Thermal resistance junction to mounting base | per diode                             | -    | -    | 2.4  | K/W  |
| $R_{th\ j-a}$  | Thermal resistance junction to ambient       | both diodes conducting<br>in free air | -    | -    | 1.4  | K/W  |
|                |  |                                       | -    | 45   | -    | K/W  |

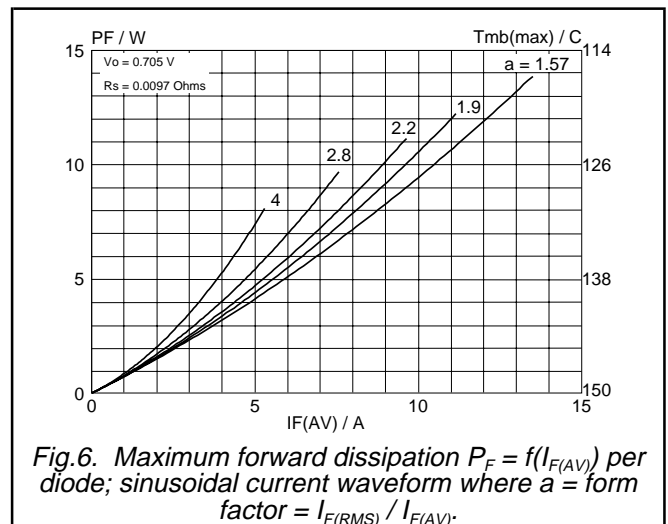
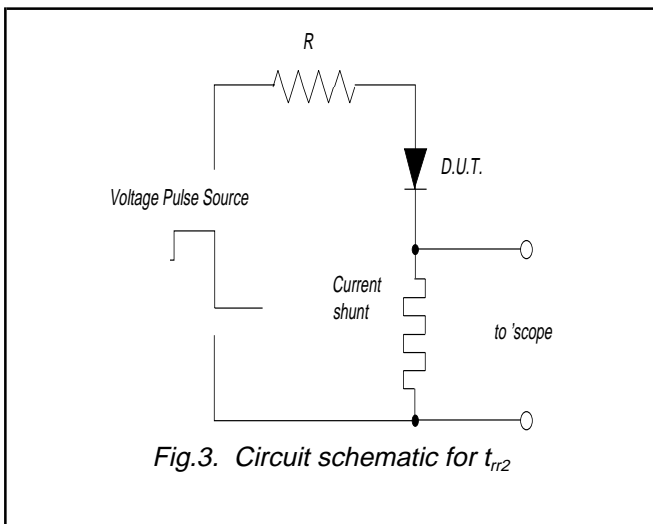
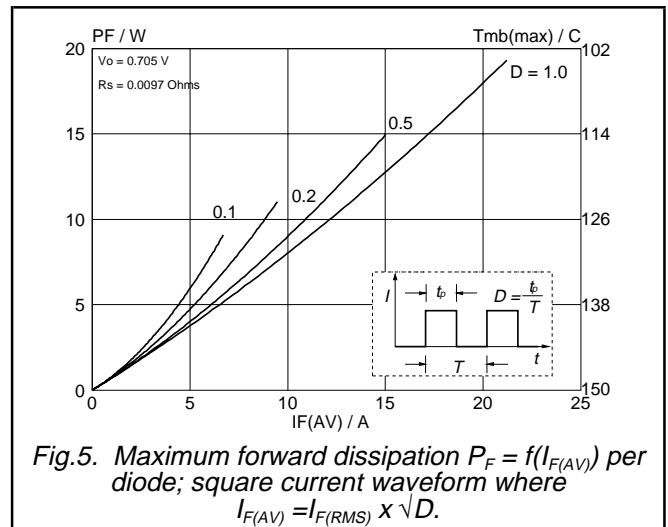
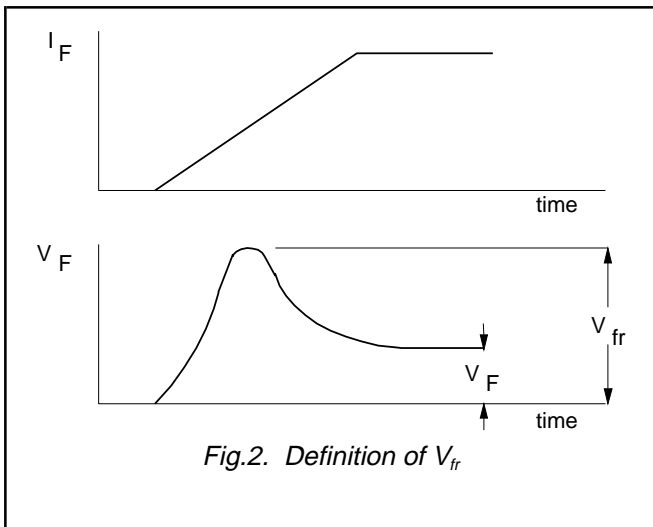
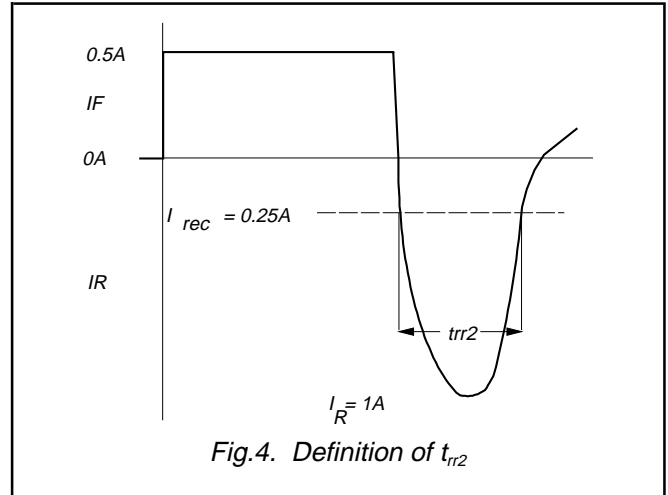
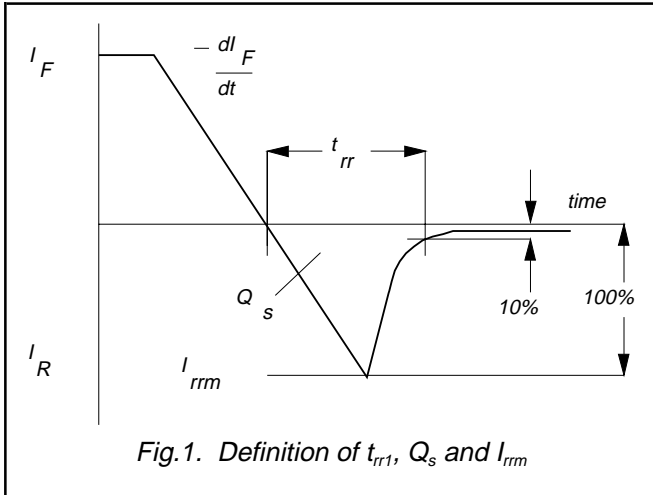
**ELECTRICAL CHARACTERISTICS**

characteristics are per diode at  $T_j = 25\text{ }^\circ\text{C}$  unless otherwise stated

| SYMBOL    | PARAMETER                | CONDITIONS   | MIN. | TYP. | MAX. | UNIT          |
|-----------|--------------------------|--|------|------|------|---------------|
| $V_F$     | Forward voltage          | $I_F = 15\text{ A}$ ; $T_j = 150\text{ }^\circ\text{C}$                                | -    | 0.83 | 0.90 | V             |
|           |                          | $I_F = 15\text{ A}$  | -    | 0.95 | 1.05 | V             |
|           |                          | $I_F = 30\text{ A}$  | -    | 1.00 | 1.20 | V             |
| $I_R$     | Reverse current          | $V_R = V_{RWM}$ ; $T_j = 100\text{ }^\circ\text{C}$                                    | -    | 0.5  | 1    | mA            |
|           |                          | $V_R = V_{RWM}$  | -    | 10   | 100  | $\mu\text{A}$ |
| $Q_s$     | Reverse recovery charge  | $I_F = 2\text{ A}$ ; $V_R \geq 30\text{ V}$ ; $-di_F/dt = 20\text{ A}/\mu\text{s}$     | -    | 6    | 15   | nC            |
| $t_{rr1}$ | Reverse recovery time    | $I_F = 1\text{ A}$ ; $V_R \geq 30\text{ V}$ ;<br>$-di_F/dt = 100\text{ A}/\mu\text{s}$ | -    | 20   | 28   | ns            |
| $t_{rr2}$ | Reverse recovery time    | $I_F = 0.5\text{ A}$ to $I_R = 1\text{ A}$ ; $I_{rec} = 0.25\text{ A}$                 | -    | 13   | 22   | ns            |
| $V_{fr}$  | Forward recovery voltage | $I_F = 1\text{ A}$ ; $di_F/dt = 10\text{ A}/\mu\text{s}$                               | -    | 1    | -    | V             |

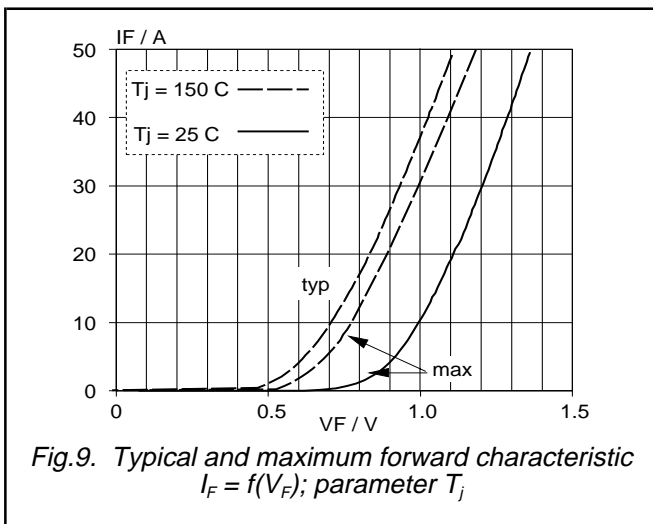
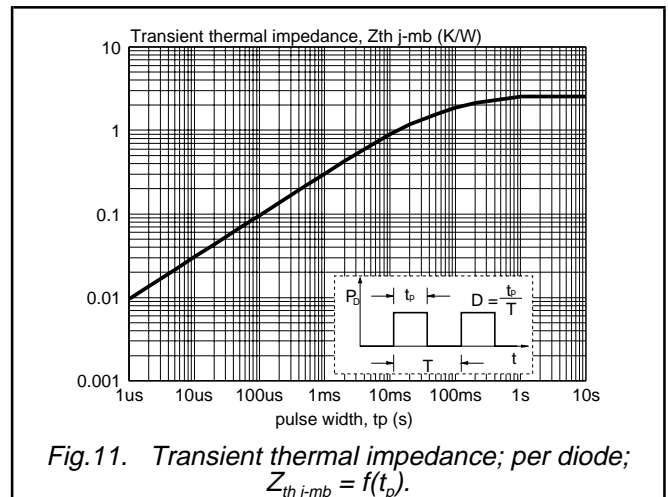
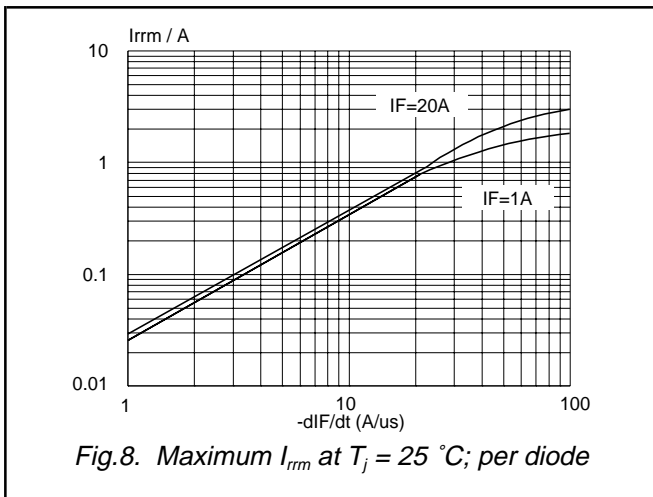
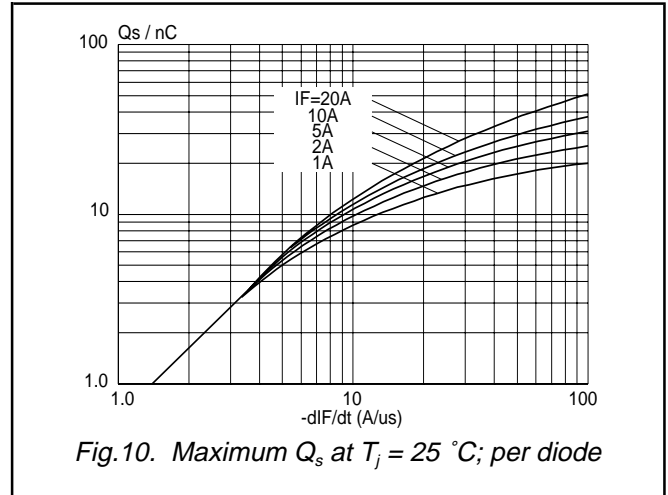
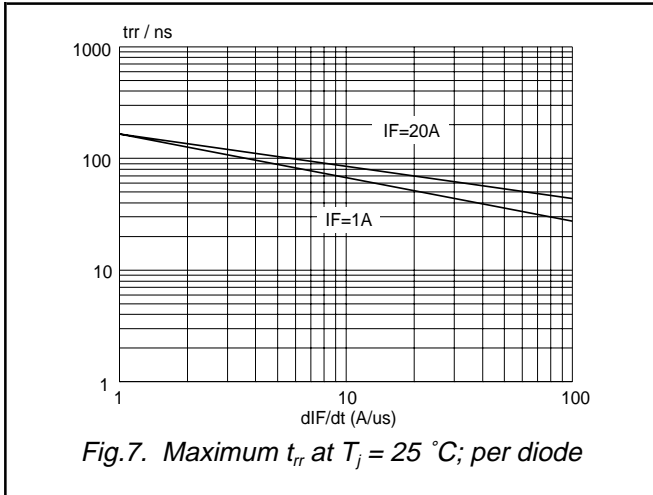
Rectifier diodes  
ultrafast, rugged

BYV72EW series



Rectifier diodes  
ultrafast, rugged

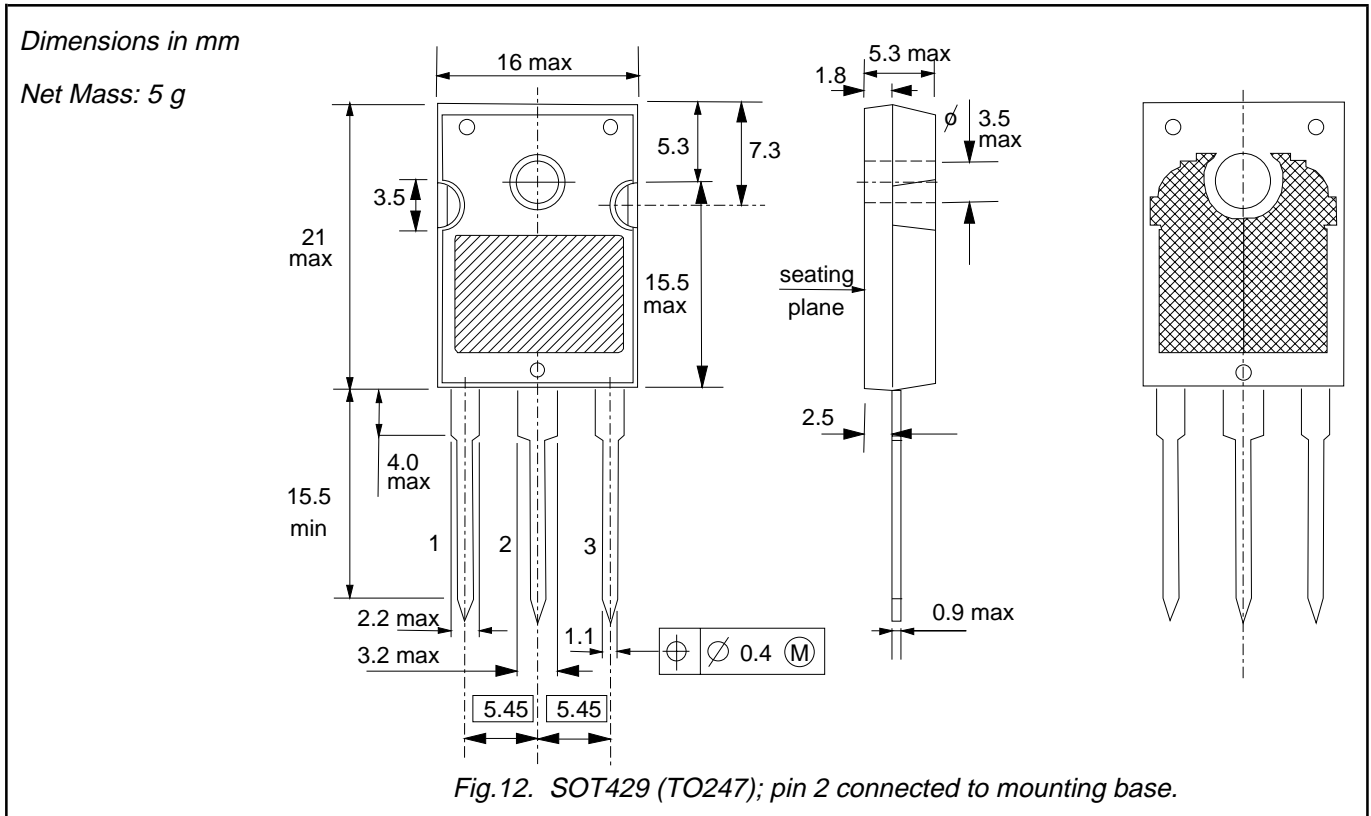
BYV72EW series



Rectifier diodes  
ultrafast, rugged

BYV72EW series

**MECHANICAL DATA**



**Notes**

1. Refer to mounting instructions for SOT429 envelope.
2. Epoxy meets UL94 V0 at 1/8".

---

**Rectifier diodes  
ultrafast, rugged**


---

**BYV72EW series**


---

**DEFINITIONS**

|  |   |
|--|---|
| <b>Data sheet status</b>   |   |
| Objective specification  | This data sheet contains target or goal specifications for product development.       |
| Preliminary specification  | This data sheet contains preliminary data; supplementary data may be published later. |
| Product specification  | This data sheet contains final product specifications.                                |
| <b>Limiting values</b>   |   |
| Limiting values are given in accordance with the Absolute Maximum Rating System (IEC 134). Stress above one or more of the limiting values may cause permanent damage to the device. These are stress ratings only and operation of the device at these or at any other conditions above those given in the Characteristics sections of this specification is not implied. Exposure to limiting values for extended periods may affect device reliability. |   |
| <b>Application information</b>   |   |
| Where application information is given, it is advisory and does not form part of the specification.  |   |
| © Philips Electronics N.V. 1998  |   |
| All rights are reserved. Reproduction in whole or in part is prohibited without the prior written consent of the copyright owner.  |   |
| The information presented in this document does not form part of any quotation or contract, it is believed to be accurate and reliable and may be changed without notice. No liability will be accepted by the publisher for any consequence of its use. Publication thereof does not convey nor imply any license under patent or other industrial or intellectual property rights.   |   |

**LIFE SUPPORT APPLICATIONS**

These products are not designed for use in life support appliances, devices or systems where malfunction of these products can be reasonably expected to result in personal injury. Philips customers using or selling these products for use in such applications do so at their own risk and agree to fully indemnify Philips for any damages resulting from such improper use or sale.