

SANYO

No.3351A

LA8500, 8501-P**Tone Ringer****Applications**

- . Telephones and other various types of consumer equipment.

Features and Functions

- . Adjustable OSC frequency
- . On-chip power supply control circuit with hysteresis prevents false triggering and rotary dial "chirps".
- . Minimum number of external parts required
- . Adjustable operation start voltage (LA8500)
- . Adjustable operation start current (LA8501-P)

Maximum Ratings at Ta=25°C

			unit
Maximum Supply Voltage	V_{CC} max	30	V
Allowable Power Dissipation	P_d max	500	mW
Operating Temperature	T_{opr}	-20 to +75	°C
Storage Temperature	T_{stg}	-55 to +150	°C

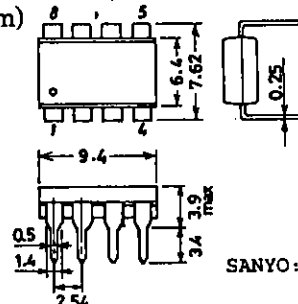
Operating Conditions at Ta=25°C

			min	typ	max	unit	
Operating Voltage	V_{opr}				29	V	
Operation Start Supply Voltage	V_{si}	(Note 1)	17	19	21	V	
Operation Sustain Supply Voltage	V_{sus}	(Note 2)	10.5	12		V	
Operation Start Current Dissipation	I_{si}	No load	1.4	3.3	4.2	mA	
Operation Sustain Current Dissipation	I_{sus}	No load		1.0		mA	
OSC Frequency (Note 3)	f_L	$C1=0.47\mu F, R1=165k\Omega$	9	10	11	Hz	
	f_{H1}	$C2=6800pF, R2=191k\Omega$	461	512	563	Hz	
	f_{H2}	$C2=6800pF, R2=191k\Omega$	576	640	703	Hz	
Output Voltage	H Level	V_{OH}	$V_{CC}=24V, I_{OH}=-10mA, PIN 7=GND$	20.0	21.5	22.5	V
	L Level	V_{OL}	$V_{CC}=24V, I_{OL}=10mA, PIN 7=7V$	0.7	1.0	2.0	V
Trigger Pin Operating Voltage (LA8500)	V_{trig}	$V_{CC}=15V, I_{trig}=100\mu A$	7.8	10	11.5	V	

Continued on next page.

Package Dimensions 3001B

(unit: mm)

**SANYO Electric Co., Ltd. Semiconductor Business Headquarters**

TOKYO OFFICE Tokyo Bldg., 1-10, 1 Chome, Ueno, Taito-ku, TOKYO, 110 JAPAN

70494HK / 1170YT / 8087TA, TS No.3351-1/2

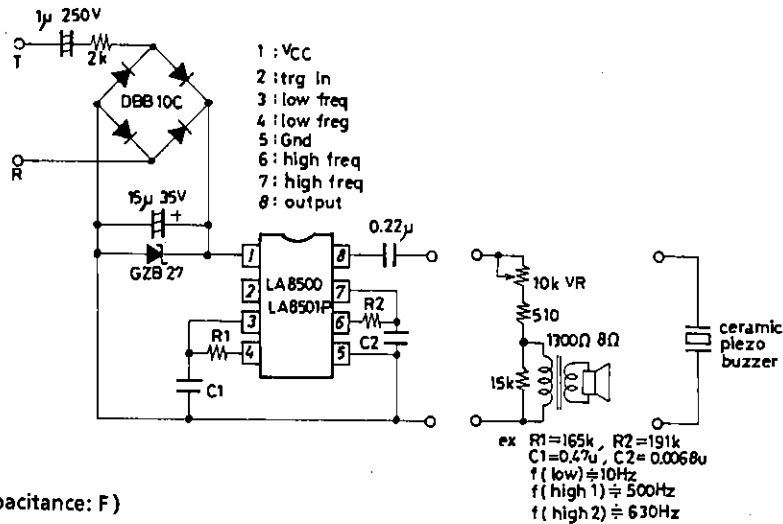
Continued from preceding page.

Note 1: Operation start supply voltage (V_{si}) is the value of supply voltage required for the tone ringer to start oscillating.

Note 2: Operation sustain supply voltage (V_{sus}) is the value of supply voltage required for the tone ringer to maintain oscillation.

Note 3: OSC frequencies are: (1) $f_L = 1/1.234 \cdot R1 \cdot C1$
 (2) $f_{H1} = 1/1.515 \cdot R2 \cdot C2$
 (3) $f_{H2} = 1.24 \cdot f_{H1}$

Sample Application Circuit



Unit (resistance: Ω , capacitance: F)

■ No products described or contained herein are intended for use in surgical implants, life-support systems, aerospace equipment, nuclear power control systems, vehicles, disaster/crime-prevention equipment and the like, the failure of which may directly or indirectly cause injury, death or property loss.

■ Anyone purchasing any products described or contained herein for an above-mentioned use shall:

- ① Accept full responsibility and indemnify and defend SANYO ELECTRIC CO., LTD., its affiliates, subsidiaries and distributors and all their officers and employees, jointly and severally, against any and all claims and litigation and all damages, cost and expenses associated with such use:
- ② Not impose any responsibility for any fault or negligence which may be cited in any such claim or litigation on SANYO ELECTRIC CO., LTD., its affiliates, subsidiaries and distributors or any of their officers and employees jointly or severally.

■ Information (including circuit diagrams and circuit parameters) herein is for example only; it is not guaranteed for volume production. SANYO believes information herein is accurate and reliable, but no guarantees are made or implied regarding its use or any infringements of intellectual property rights or other rights of third parties.