

SANYO	No.2198A	SB0015-03A
		Schottky Barrier Diode 30V, 15mA Detection Applications

Features

- Glass sleeve structure
- Detection efficiency : 70%
- Small size (Half the size of the DO-35 heretofore in use)

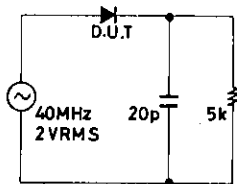
Absolute Maximum Ratings at Ta = 25°C

			unit
Reverse Voltage	V_R	-30	V
Average Rectified Current	I_o	15	mA
Junction Temperature	T_j	100	°C
Storage Temperature	T_{stg}	-55 to +100	°C

Electrical Characteristics at Ta = 25°C

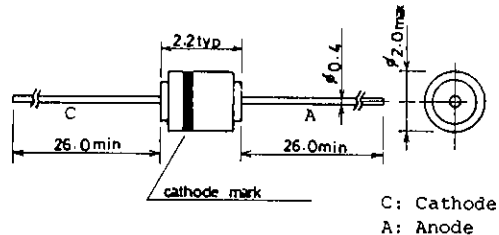
			min	typ	max	unit
Forward Current	I_F	$V_F = 1.0V$	3.0			mA
Reverse Current	I_R	$V_R = -10V$			-100	μA
Capacitance	C	$V_R = -1V, f = 1MHz$			3.0	pF
Detection Efficiency	η	$f = 40MHz$	70			%

Detection Efficiency Circuit



Unit (resistance: Ω, capacitance: F)

Package Dimensions 1153A (unit: mm)



■ No products described or contained herein are intended for use in surgical implants, life-support systems, aerospace equipment, nuclear power control systems, vehicles, disaster/crime-prevention equipment and the like, the failure of which may directly or indirectly cause injury, death or property loss.

■ Anyone purchasing any products described or contained herein for an above-mentioned use shall:

- ① Accept full responsibility and indemnify and defend SANYO ELECTRIC CO., LTD., its affiliates, subsidiaries and distributors and all their officers and employees, jointly and severally, against any and all claims and litigation and all damages, cost and expenses associated with such use;
- ② Not impose any responsibility for any fault or negligence which may be cited in any such claim or litigation on SANYO ELECTRIC CO., LTD., its affiliates, subsidiaries and distributors or any of their officers and employees jointly or severally.

■ Information (including circuit diagrams and circuit parameters) herein is for example only; it is not guaranteed for volume production. SANYO believes information herein is accurate and reliable, but no guarantees are made or implied regarding its use or any infringements of intellectual property rights or other rights of third parties.

