

## LM12S49

Color STN-LCD Module  
(FA/POS/Measuring instruments)

### Features

- 31 cm [12.1"] SVGA format
- High brightness (180 cd/m<sup>2</sup>)
- Built-in long life CCFT backlight (40 000 h, [Typ.])

### Specifications

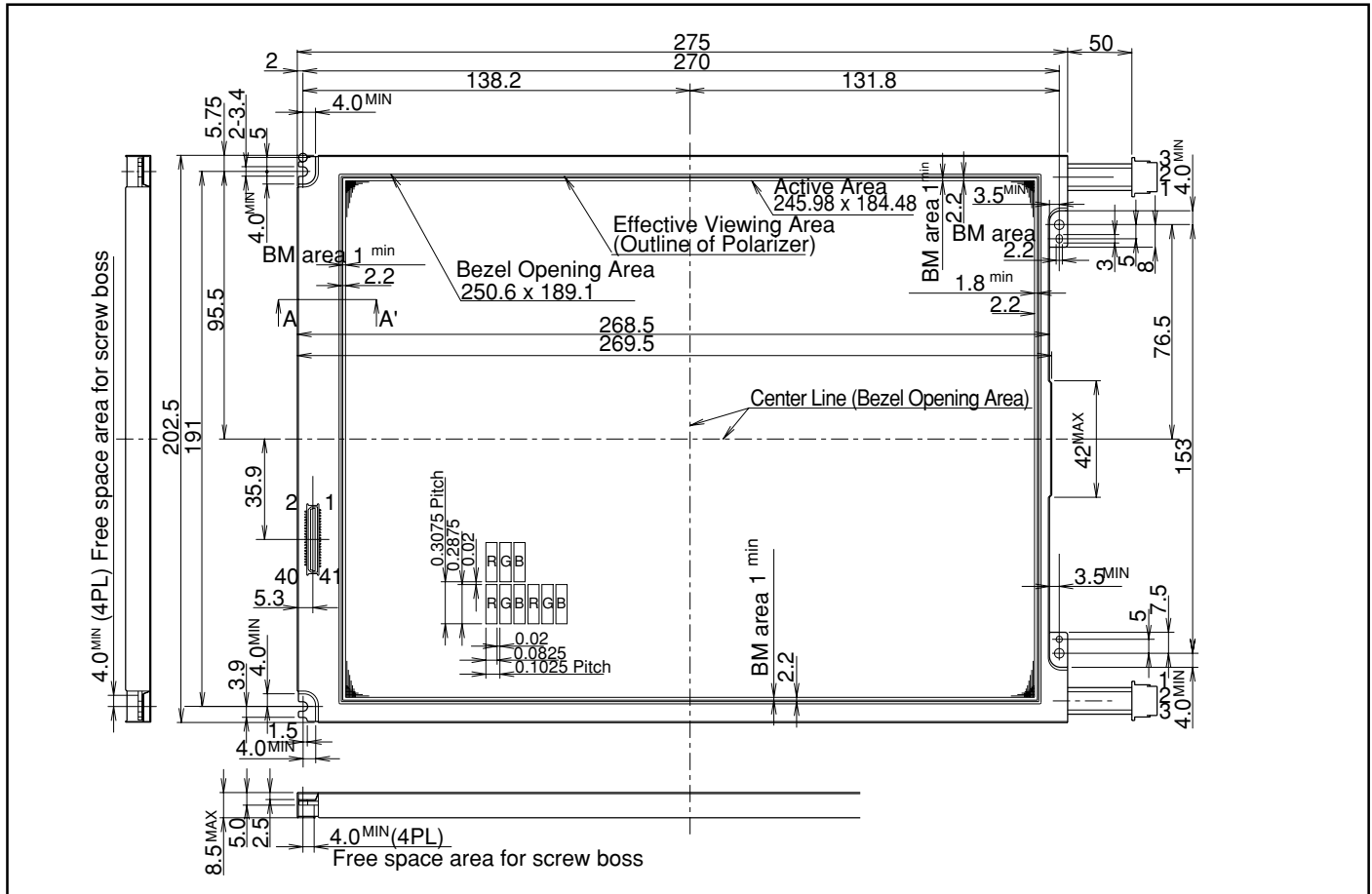
Parameter		Unit
Display size	31 [12.1]	cm ["]
Dot format (H x V)	800 x RGB x 600	dot
Dot pitch (H x V)	0.1025 x 0.3075	mm
Active area (H x V)	246.0 x 184.5	mm
Panel type	*1	-
Panel mode	Transmissive	-
Contrast ratio	40 : 1	-
Response time	300	ms
Brightness	180	cd/m <sup>2</sup>

Parameter		Unit
Backlight type	2CCFT(E)	-
Duty ratio	1/300	-
Logic voltage	5.0 Vcon	V
Power consumption	7 030	mW
Outline dimensions (W x H x D)	275.0 x 202.5 x 8.5	mm
Weight	550	g
Operating temperature	0 to +40	°C
Storage temperature	-25 to +60	°C

\*1...Triple Super Twisted Nematic

### Outline Dimensions

unit : mm



In the absence of confirmation by device specification sheets, SHARP takes no responsibility for any defects that may occur in using any SHARP devices shown in catalogs, data books, etc. Contact SHARP in order to obtain the latest device specification sheets before using any SHARP device. Specifications are subject to change without notice for improvement.