

SPEC No. | E L O 9 4 1 4 6

ISSUE: Apl 22 1997

To: _____

S P E C I F I C A T I O N S

Product Type 8M Flash File Memory

LH28F008SAT-K85

Model No. (LHF08S17)

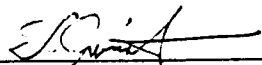
※This specifications contains 32 pages including the cover and appendix.
If you have any objections, please contact us before issuing purchasing order.

CUSTOMERS ACCEPTANCE

DATE: _____

BY: _____

PRESENTED

BY: 
T. MIMOTO
Dept. General Manager

REVIEWED BY:

PREPARED BY:

Flash Dept. 1
Memory Engineering Center
Tenri Integrated Circuits Group
SHARP CORPORATION

- Handle this document carefully for it contains material protected by international copyright law. Any reproduction, full or in part, of this material is prohibited without the express written permission of the company.

- When using the products covered herein, please observe the conditions written herein and the precautions outlined in the following paragraphs. In no event shall the company be liable for any damages resulting from failure to strictly adhere to these conditions and precautions.
 - (1) The products covered herein are designed and manufactured for the following application areas. When using the products covered herein for the equipment listed in Paragraph (2), even for the following application areas, be sure to observe the precautions given in Paragraph (2). Never use the products for the equipment listed in Paragraph (3).
 - Office electronics
 - Instrumentation and measuring equipment
 - Machine tools
 - Audiovisual equipment
 - Home appliance
 - Communication equipment other than for trunk lines

 - (2) Those contemplating using the products covered herein for the following equipment which demands high reliability, should first contact a sales representative of the company and then accept responsibility for incorporating into the design fail-safe operation, redundancy, and other appropriate measures for ensuring reliability and safety of the equipment and the overall system.
 - Control and safety devices for airplanes, trains, automobiles, and other transportation equipment
 - Mainframe computers
 - Traffic control systems
 - Gas leak detectors and automatic cutoff devices
 - Rescue and security equipment
 - Other safety devices and safety equipment, etc.

 - (3) Do not use the products covered herein for the following equipment which demands extremely high performance in terms of functionality, reliability, or accuracy.
 - Aerospace equipment
 - Communications equipment for trunk lines
 - Control equipment for the nuclear power industry
 - Medical equipment related to life support, etc.

 - (4) Please direct all queries and comments regarding the interpretation of the above three Paragraphs to a sales representative of the company.

- Please direct all queries regarding the products covered herein to a sales representative of the company.

CONTENTS

| | | | |
|----|--|-------|----|
| 1 | FEATURES | | 2 |
| 2 | PRODUCT OVERVIEW | | 3 |
| 3 | PRINCIPLES OF OPERATION | | 8 |
| 4 | BUS OPERATION | | 9 |
| 5 | COMMAND DEFINITIONS | | 11 |
| 6 | EXTENDED BLOCK ERASE/BYTE WRITE CYCLING | | 13 |
| 7 | AUTOMATED BYTE WRITE | | 13 |
| 8 | AUTOMATED BLOCK ERASE | | 13 |
| 9 | DESIGN CONSIDERATIONS | | 13 |
| 10 | ABSOLUTE MAXIMUM RATINGS | | 18 |
| 11 | OPERATING CONDITIONS | | 18 |
| 12 | DC CHARACTERISTICS | | 18 |
| 13 | CAPACITANCE | | 19 |
| 14 | AC CHARACTERISTICS | | 20 |
| 15 | BLOCK ERASE AND BYTE WRITE PERFORMANCE | | 23 |
| 16 | ALTERNATIVE \overline{CE} -CONTROLLED WRITES | | 25 |
| 17 | PACKAGING AND PACKING SPECIFICATION | | 27 |

LH28F008SAT-K85 8 MBIT (1 MBIT x 8) FLASH MEMORY

1. FEATURES

- **High-Density Symmetrically Blocked Architecture**
 - Sixteen 64 KByte Blocks
- **Extended Cycling Capability**
 - 100,000 Block Erase Cycles
 - 1.6 Million Block Erase Cycles per Chip
- **Automated Byte Write and Block Erase**
 - Command User Interface
 - Status Register
- **System Performance Enhancements**
 - $\overline{RY}/\overline{BY}$ Status Output
 - Erase Suspend Capability
- **Deep-Powerdown Mode**
 - 16 μ A I_{CC} Maximum
- **Very High-Performance Read**
 - 85 ns Maximum Access Time
- **SRAM-Compatible Write Interface**
- **Hardware Data Protection Feature**
 - Erase/Write Lockout during Power Transitions
- **Industry Standard Packaging**
 - 40-Lead TSOP
- **ETOX™* V Nonvolatile Flash Technology**
 - 12V Byte Write/Block Erase
- **Not designed or rated as radiation hardened**

SHARP's LH28F008SAT-K85 8 Mbit Flash Memory is the highest density nonvolatile read/write solution for solid state storage. The LH28F008SAXX-KXXX's extended cycling, symmetrically blocked architecture, fast access time, write automation and low power consumption provide a more reliable, lower power, lighter weight and higher performance alternative to traditional rotating disk technology. The LH28F008SAT-K85 brings new capabilities to portable computing. Application and operating system software stored in resident flash memory arrays provide instant-on rapid execute-in-place and protection from obsolescence through in-system software updates. Resident software also extends system battery life and increases reliability by reducing disk drive accesses.

For high density data acquisition applications, the LH28F008SAT-K85 offers a more cost-effective and reliable alternative to SRAM and battery. Traditional high density embedded applications, such as telecommunications, can take advantage of the LH28F008SAXX-KXXX's nonvolatility, blocking and minimal system code requirements for flexible firmware and modular software designs.

The LH28F008SAT-K85 is offered in 40-lead TSOP (standard) package. Pin assignments simplify board layout when integrating multiple devices in a flash memory array or subsystem. This device uses an integrated Command User Interface and state machine for simplified block erasure and byte write. The LH28F008SAT-K85 memory map consists of 16 separately erasable 64 Kbyte blocks.

SHARP's LH28F008SAT-K85 employs advanced CMOS circuitry for systems requiring low power consumption and noise immunity. Its 85 ns access time provides superior performance when compared with magnetic storage media. A deep powerdown mode lowers power consumption to 80 μ W maximum thru V_{CC} , crucial in portable computing, handheld instrumentation and other low-power applications. The \overline{RP} power control input also provides absolute data protection during system powerup/down.

* ETOX is a trademark of Intel Corporation.

2. PRODUCT OVERVIEW

The LH28F008SAT-K85 is a high-performance **8 Mbit** (8,388,608 bit) memory organized as **1 Mbyte** (1,048,576 bytes) of 8 bits each. **Sixteen 64 KByte** (65,536 byte) **blocks** are included on the LH28F008SAT-K85. A memory map is shown in Figure 4 of this specification. A block erase operation erases one of the sixteen blocks of memory in typically **1.6 seconds**, independent of the remaining blocks. Each block can be independently erased and written **100,000 cycles**. **Erase Suspend** mode allows system software to suspend block erase to read data or execute code from any other block of the LH28F008SAT-K85.

The LH28F008SAT-K85 is available in the **40-lead TSOP** (Thin Small Outline Package, 1.2 mm thick) package. Pinouts are shown in Figure 2 of this specification.

The **Command User Interface** serves as the interface between the microprocessor or microcontroller and the internal operation of the LH28F008SAT-K85.

Byte Write and Block Erase Automation allow byte write and block erase operations to be executed using a two-write command sequence to the Command User Interface. The internal **Write State Machine (WSM)** automatically executes the algorithms and timings necessary for byte write and block erase operations, including verifications, thereby unburdening the microprocessor or microcontroller. Writing of memory data is performed in byte increments typically within **8 μ s**. **I_{pp} byte write and block erase currents are 10 mA typical, 30 mA maximum. V_{pp} byte write and block erase voltage is 11.4V to 12.6V.**

The **Status Register** indicates the status of the WSM and when the WSM successfully completes the desired byte write or block erase operation.

The **$R\bar{Y}/\bar{B}Y$** output gives an additional indicator of WSM activity, providing capability for both hardware signal of status (versus software polling) and status masking (interrupt masking for background erase, for example). Status polling using **$R\bar{Y}/\bar{B}Y$** minimizes both CPU overhead and system power consumption. When low, **$R\bar{Y}/\bar{B}Y$** indicates that the WSM is performing a block erase or byte write operation. **$R\bar{Y}/\bar{B}Y$** high indicates that the WSM is ready for new commands, block erase is suspended or the device is in deep powerdown mode.

Maximum access time is **85 ns (t_{ACC})** over the commercial temperature range (0°C to +70°C) and over V_{CC} supply voltage range (4.5V to 5.5V and 4.75V to 5.25V). **I_{CC} active current (CMOS Read) is 20mA typical, 35 mA maximum at 8 MHz.**

When the **$\bar{C}E$** and **$\bar{R}P$** pins are at V_{CC} , the **I_{CC} CMOS Standby** mode is enabled.

A **Deep Powerdown** mode is enabled when the **$\bar{R}P$** pin is at GND, minimizing power consumption and providing write protection. **I_{CC} current** in deep powerdown is **16 μ A maximum**. Reset time of 400 ns is required from **$\bar{R}P$** switching high until outputs are valid to read attempts. Equivalently, the device has a wake time of 1 μ s from **$\bar{R}P$** high until writes to the Command User Interface are recognized by the LH28F008SAT-K85. With **$\bar{R}P$** at GND, the WSM is reset and the Status Register is cleared.

Please do not execute reprogramming "0" for the bit which has already been programmed "0". Overwrite operation may generate unerasable bit. In case of reprogramming "0" to the data which has been programmed "1".

- Program "0" for the bit in which you want to change data from "1" to "0".

- Program "1" for the bit which has already been programmed "0".

For example, changing data from "10111101" to "10111100" requires "11111110" programming.

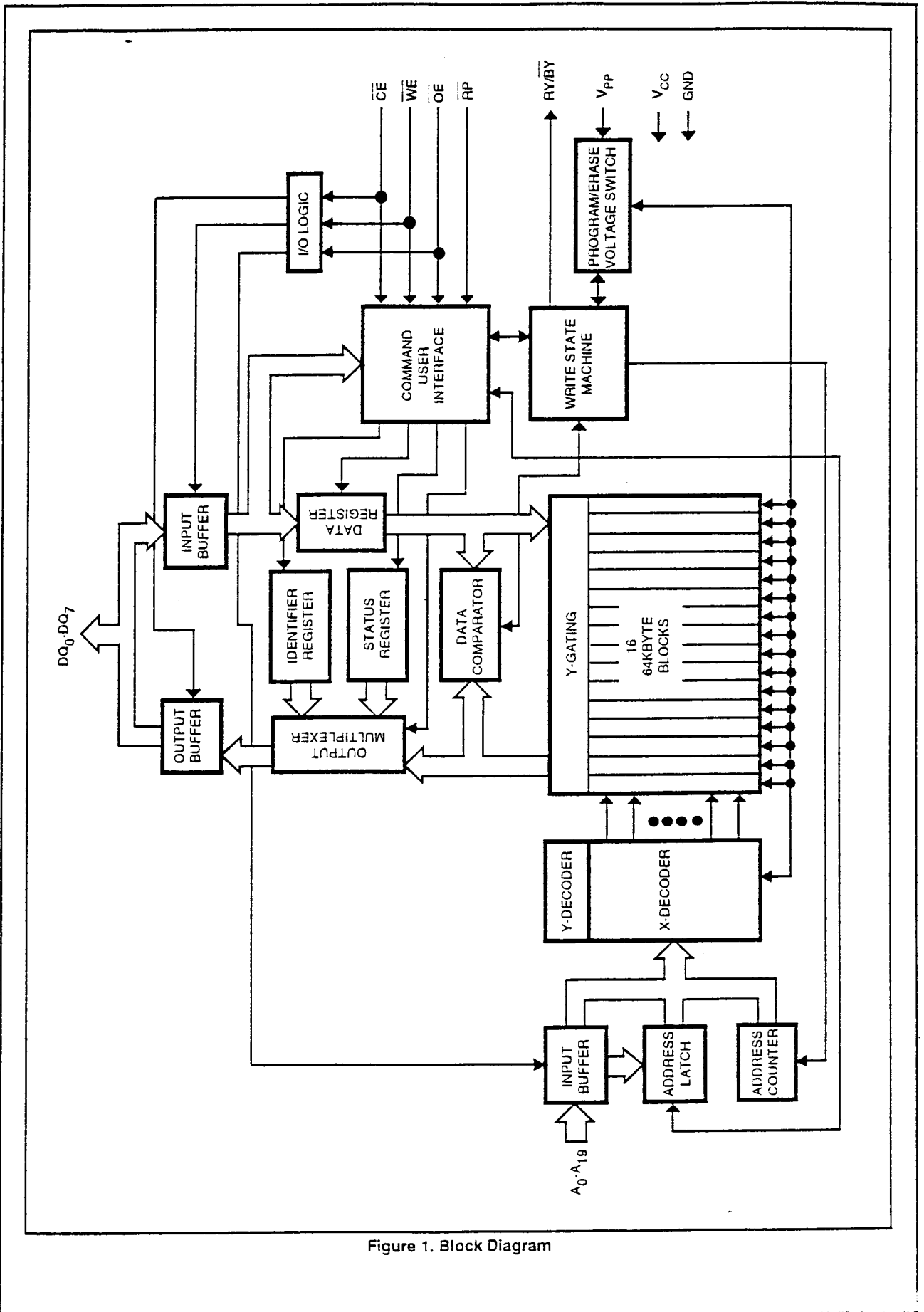


Figure 1. Block Diagram

Table 1. Pin Description

| Symbol | Type | Name and Function |
|--------------------|--------------|---|
| A_0 - A_{19} | INPUT | ADDRESS INPUTS: for memory addresses. Addresses are internally latched during a write cycle. |
| DQ_0 - DQ_7 | INPUT/OUTPUT | DATA INPUT/OUTPUTS: Inputs data and commands during Command User Interface write cycles; outputs data during memory array, Status Register and Identifier read cycles. The data pins are active high and float to tri-state off when the chip is deselected or the outputs are disabled. Data is internally latched during a write cycle. |
| \overline{CE} | INPUT | CHIP ENABLE: Activates the device's control logic input buffers decoders, and sense amplifiers. \overline{CE} is active low; \overline{CE} high deselects the memory device and reduces power consumption to standby levels. |
| \overline{RP} | INPUT | RESET/POWERDOWN: Puts the device in deep powerdown mode. \overline{RP} is active low; \overline{RP} high gates normal operation. \overline{RP} also locks out block erase or byte write operations when active low, providing data protection during power transitions. \overline{RP} active resets internal automation. Exit from Deep Powerdown sets device to read-array mode. |
| \overline{OE} | INPUT | OUTPUT ENABLE: Gates the device's outputs through the data buffers during a read cycle. \overline{OE} is active low. |
| \overline{WE} | INPUT | WRITE ENABLE: Controls writes to the Command User Interface and array blocks. \overline{WE} is active low. Addresses and data are latched on the rising edge of the \overline{WE} pulse. |
| RY/\overline{BY} | OUTPUT | READY/\overline{BUSY}: Indicates the status of the internal Write State Machine. When low, it indicates that the WSM is performing a block erase or byte write operation. RY/\overline{BY} high indicates that the WSM is ready for new commands, block erase is suspended or the device is in deep powerdown mode. RY/\overline{BY} is always active and does NOT float to tri-state off when the chip is deselected or data outputs are disabled. |
| V_{PP} | | BLOCK ERASE/BYTE WRITE POWER SUPPLY: for erasing blocks of the array or writing bytes of each block. NOTE: With $V_{PP} < V_{PPLMAX}$, memory contents cannot be altered. |
| V_{CC} | | DEVICE POWER SUPPLY (5V\pm10%, 5V\pm5%) |
| GND | | GROUND |

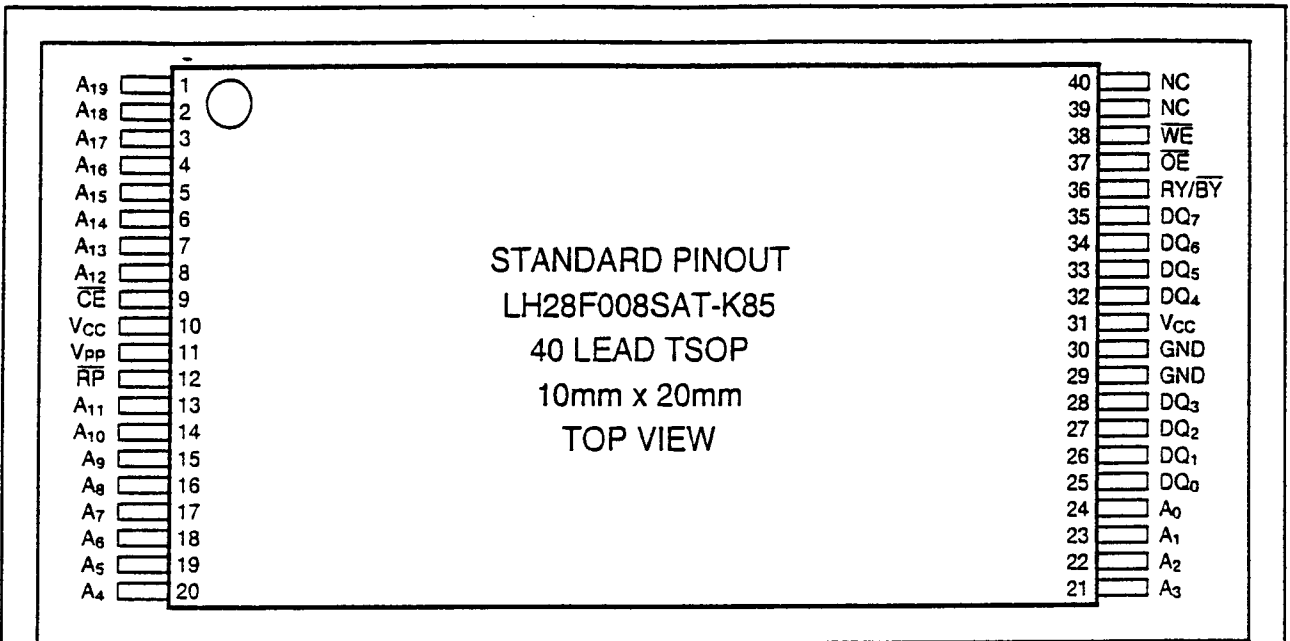


Figure 2. TSOP Lead Configuration

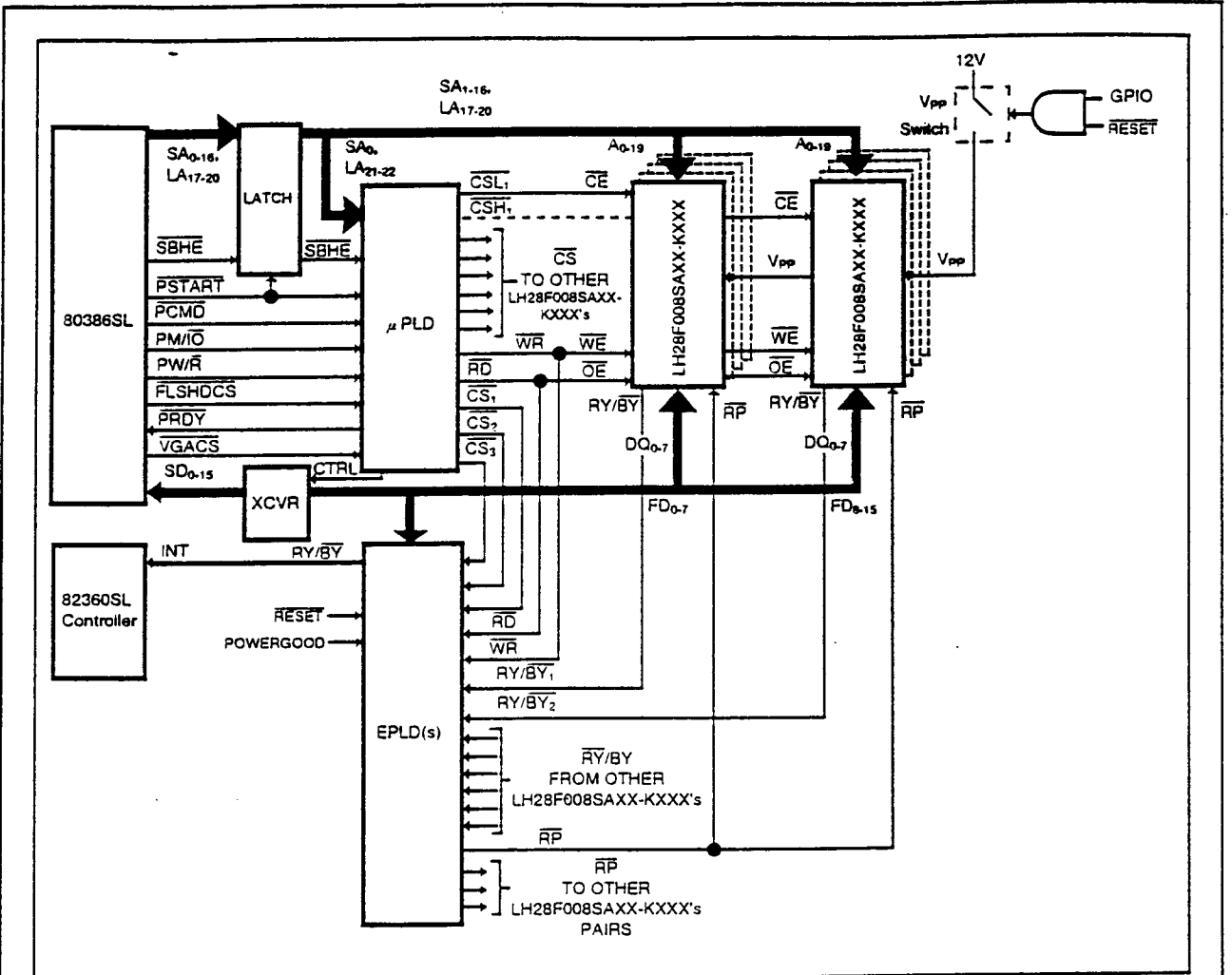


Figure 3. LH28F008SAXX-KXXX Array Interface to 386SL Microprocessor Superset through PI Bus (Including RY/
 $\bar{B}Y$ Masking and Selective Powerdown), for DRAM Backup during System SUSPEND, Resident O/S and
 Applications and Motherboard Solid-State Disk.

3. PRINCIPLES OF OPERATION

The LH28F008SAT-K85 includes on-chip write automation to manage write and erase functions. The Write State Machine allows for: 100% TTL-level control inputs; fixed power supplies during block erasure and byte write; and minimal processor overhead with SRAM-like interface timings.

After initial device powerup, or after return from deep powerdown mode (see Bus Operations), the LH28F008SAT-K85 functions as a read-only memory. Manipulation of external memory-control pins allow array read, standby and output disable operations. Both Status Register and intelligent identifiers can also be accessed through the Command User Interface when $V_{PP}=V_{PPL}$.

This same subset of operations is also available when high voltage is applied to the V_{PP} pin. In addition, high voltage on V_{PP} enables successful block erasure and byte writing of the device. All functions associated with altering memory contents — byte write, block erase, status and intelligent identifier — are accessed via the Command User Interface and verified thru the Status Register.

Commands are written using standard microprocessor write timings. Command User Interface contents serve as input to the WSM, which controls the block erase and byte write circuitry. Write cycles also internally latch addresses and data needed for byte write or block erase operations. With the appropriate command written to the register, standard microprocessor read timings output array data, access the intelligent identifier codes, or output byte write and block erase status for verification.

Interface software to initiate and poll progress of internal byte write and block erase can be stored in any of the LH28F008SAT-K85 blocks. This code is copied to, and executed from, system RAM during actual flash memory update. After successful completion of byte write and/or block erase, code/data reads from the LH28F008SAT-K85 are again possible via the Read Array command. Erase suspend/resume capability allows system software to suspend block erase to read data and execute code from any other block.

| | |
|-------|----------------|
| FFFFF | 64 Kbyte Block |
| F0000 | 64 Kbyte Block |
| EFFFF | 64 Kbyte Block |
| E0000 | 64 Kbyte Block |
| DFFFF | 64 Kbyte Block |
| D0000 | 64 Kbyte Block |
| CFFFF | 64 Kbyte Block |
| C0000 | 64 Kbyte Block |
| BFFFF | 64 Kbyte Block |
| B0000 | 64 Kbyte Block |
| AFFFF | 64 Kbyte Block |
| A0000 | 64 Kbyte Block |
| 9FFFF | 64 Kbyte Block |
| 90000 | 64 Kbyte Block |
| 8FFFF | 64 Kbyte Block |
| 80000 | 64 Kbyte Block |
| 7FFFF | 64 Kbyte Block |
| 70000 | 64 Kbyte Block |
| 6FFFF | 64 Kbyte Block |
| 60000 | 64 Kbyte Block |
| 5FFFF | 64 Kbyte Block |
| 50000 | 64 Kbyte Block |
| 4FFFF | 64 Kbyte Block |
| 40000 | 64 Kbyte Block |
| 3FFFF | 64 Kbyte Block |
| 30000 | 64 Kbyte Block |
| 2FFFF | 64 Kbyte Block |
| 20000 | 64 Kbyte Block |
| 1FFFF | 64 Kbyte Block |
| 10000 | 64 Kbyte Block |
| 0FFFF | 64 Kbyte Block |
| 00000 | 64 Kbyte Block |

Figure 4. Memory Map

Command User Interface and Write Automation

An on-chip state machine controls block erase and byte write, freeing the system processor for other tasks. After receiving the Erase Setup and Erase Confirm commands, the state machine controls block pre-conditioning and erase, returning progress via the Status Register and $\overline{RY/BY}$ output. Byte write is similarly controlled, after destination address and expected data are supplied. The program and erase algorithms of past standard Flash memories are now regulated by the state machine, including pulse repetition where required and internal verification and margining of data.

Data Protection

Depending on the application, the system designer may choose to make the V_{PP} power supply switchable (available only when memory byte writes/block erases are required) or hardwired to V_{PPH} . When $V_{PP}=V_{PPL}$, memory contents cannot be altered. The LH28F008SAT-K85 Command User Interface architecture provides protection from unwanted byte write or block erase operations even when high voltage is applied to V_{PP} . Additionally, all functions are disabled whenever V_{CC} is below the write lockout voltage V_{LKO} , or when \overline{RP} is at V_{IL} . The LH28F008SAT-K85 accommodates either design practice and encourages optimization of the processor-memory interface.

The two-step byte write/block erase Command User Interface write sequence provides additional software write protection.

4. BUS OPERATION

Flash memory reads, erases and writes in-system via the local CPU. All bus cycles to or from the flash memory conform to standard microprocessor bus cycles.

Read

The LH28F008SAT-K85 has three read modes. The memory can be read from any of its blocks, and information can be read from the intelligent identifier or Status Register. V_{PP} can be at either V_{PPL} or V_{PPH} .

The first task is to write the appropriate read mode command to the Command User Interface (array, intelligent identifier, or Status Register). The LH28F008SAT-K85 automatically resets to Read Array mode upon initial device powerup or after exit from deep powerdown. The LH28F008SAT-K85 has four control pins, two of which must be logically active to obtain data at the outputs. Chip Enable (\overline{CE}) is the device selection control, and when active enables the selected memory device. Output Enable (\overline{OE}) is the data input/output (DQ₀-DQ₇) direction control, and when active drives data from the selected memory onto the I/O bus. \overline{RP} and \overline{WE} must also be at V_{IH} . Figure 8 illustrates read bus cycle waveforms.

Output Disable

With \overline{OE} at a logic-high level (V_{IH}), the device outputs are disabled. Output pins (DQ₀-DQ₇) are placed in a high-impedance state.

Standby

\overline{CE} at a logic-high level (V_{IH}) places the LH28F008SAT-K85 in standby mode. Standby operation disables much of the LH28F008SAXX-KXXX's circuitry and substantially reduces device power consumption. The outputs (DQ₀-DQ₇) are placed in a high-impedance state independent of the status of \overline{OE} . If the LH28F008SAT-K85 is deselected during block erase or byte write, the device will continue functioning and consuming normal active power until the operation completes.

Table 2. Bus Operations

| Mode | Notes | \overline{RP} | \overline{CE} | \overline{OE} | \overline{WE} | A_0 | V_{PP} | DQ ₀₋₇ | RY/BY |
|---------------------------------|-------|-----------------|-----------------|-----------------|-----------------|----------|----------|-------------------|----------|
| Read | 1,2,3 | V_{IH} | V_{IL} | V_{IL} | V_{IH} | X | X | D _{OUT} | X |
| Output Disable | 3 | V_{IH} | V_{IL} | V_{IH} | V_{IH} | X | X | High Z | X |
| Standby | 3 | V_{IH} | V_{IH} | X | X | X | X | High Z | X |
| Deep PowerDown | | V_{IL} | X | X | X | X | X | High Z | V_{OH} |
| Intelligent Identifier (Mfr) | | V_{IH} | V_{IL} | V_{IL} | V_{IH} | V_{IL} | X | 89H | V_{OH} |
| Intelligent Identifier (Device) | | V_{IH} | V_{IL} | V_{IL} | V_{IH} | V_{IH} | X | A2H | V_{OH} |
| Write | 3,4,5 | V_{IH} | V_{IL} | V_{IH} | V_{IL} | X | X | D _{IN} | X |

NOTES:

1. Refer to DC Characteristics. When $V_{PP}=V_{PPL}$, memory contents can be read but not written or erased.
2. X can be V_{IL} or V_{IH} for control pins and addresses, and V_{PPL} or V_{PPH} for V_{PP} . See DC Characteristics for V_{OPL} and V_{OCH} voltages.
3. RY/ \overline{BY} is V_{OL} when the Write State Machine is executing internal block erase or byte write algorithms. It is V_{OH} when the WSM is not busy, in Erase Suspend mode or deep powerdown mode.
4. Command writes involving block erase or byte write are only successfully executed when $V_{PP}=V_{PPH}$.
5. Refer to Table 3 for valid D_{IN} during a write operation.

Deep Power-Down

The LH28F008SAT-K85 offers a deep powerdown feature, entered when \overline{RP} is at V_{IL} . Current draw thru V_{CC} is 16 μ A maximum in deep powerdown mode, with current draw through V_{PP} maximal 5 μ A. During read modes, \overline{RP} -low de-selects the memory, places output drivers in a high-impedance state and turns off all internal circuits. The LH28F008SAT-K85 requires time t_{PHQV} (see AC Characteristics-Read-Only Operations) after return from powerdown until initial memory access outputs are valid. After this wakeup interval, normal operation is restored. The Command User Interface is reset to Read Array, and the upper 5bits of the Status Register are cleared to value 10000, upon return to normal operation.

During block erase or byte write modes, \overline{RP} low will abort either operation. Memory contents of the block being altered are no longer valid as the data will be partially written or erased. Time t_{PHWL} after \overline{RP} goes to logic-high (V_{IH}) is required before another command can be written.

Intelligent Identifier Operation

The intelligent identifier operation outputs the manufacturer code, 89H; and the device code, A2H for the LH28F008SAT-K85. The system CPU can then automatically match the device with its proper block erase and byte write algorithms.

The manufacturer- and device-codes are read via the Command User Interface. Following a write of 90H to the Command User Interface, a read from address location 00000H outputs the manufacturer code (89H). A read from address 00001H outputs the device code (A2H). It is not necessary to have high voltage applied to V_{PP} to read the intelligent identifiers from the Command User Interface.

Write

Writes to the Command User Interface enable reading of device data and intelligent identifiers. They also control inspection and clearing of the Status Register. Additionally, when $V_{PP}=V_{PPH}$, the Command User Interface controls block erasure and byte write. The contents of the interface register serve as input to the internal state machine.

Table 3. Command Definitions

| Command | Bus Cycles Req'd | Notes | First Bus Cycle | | | Second Bus Cycle | | |
|----------------------------------|------------------|-------|-----------------|---------|------|------------------|---------|------|
| | | | Operation | Address | Data | Operation | Address | Data |
| Read Array/Reset | 1 | 1 | Write | X | FFH | | | |
| Intelligent Identifier | 3 | 2,3,4 | Write | X | 90H | Read | IA | IID |
| Read Status Register | 2 | 3 | Write | X | 70H | Read | X | SRD |
| Clear Status Register | 1 | | Write | X | 50H | | | |
| Erase Setup/Erase Confirm | 2 | 2 | Write | BA | 20H | Write | BA | D0H |
| Erase Suspend/Erase Resume | 2 | | Write | X | 80H | Write | X | D0H |
| Byte Write Setup/Write | 2 | 2,3,5 | Write | WA | 40H | Write | WA | WD |
| Alternate Byte Write Setup/Write | 2 | 2,3,5 | Write | WA | 10H | Write | WA | WD |

NOTES:

- Bus operations are defined in Table 2.
- IA=Identifier Address: 00H for manufacturer code, 01H for device code.
BA=Address within the block being erased.
WA=Address of memory location to be written.
- SRD=Data read from Status Register. See Table 4 for a description of the Status Register bits.
WD=Data to be written at location WA. Data is latched on the rising edge of \overline{WE} .
IID=Data read from intelligent identifiers.
- Following the intelligent identifier command, two read operations access manufacture and device codes.
- Either 40H or 10H are recognized by the WSM as the Byte Write Setup command.
- Commands other than those shown above are reserved by SHARP for future device implementations and should not be used.

The Command User Interface itself does not occupy an addressable memory location. The interface register is a latch used to store the command and address and data information needed to execute the command. Erase Setup and Erase Confirm commands require both appropriate command data and an address within the block to be erased. The Byte Write Setup command requires both appropriate command data and the address of the location to be written, while the Byte Write command consists of the data to be written and the address of the location to be written.

The Command User Interface is written by bringing \overline{WE} to a logic-low level (V_{IL}) while \overline{CE} is low. Addresses and data are latched on the rising edge of \overline{WE} . Standard microprocessor write timings are used.

Refer to AC Write Characteristics and the AC Waveforms for Write Operations, Figure 9, for specific timing parameters.

5. COMMAND DEFINITIONS

When V_{PPL} is applied to the V_{PP} pin, read operations from the Status Register, intelligent identifiers, or array blocks are enabled. Placing V_{PPH} on V_{PP} enables successful byte write and block erase operations as well.

Device operations are selected by writing specific commands into the Command User Interface. Table 3 defines the LH28F008SAT-K85 commands.

Read Array Command

Upon initial device powerup and after exit from deep powerdown mode, the LH28F008SAT-K85 defaults to Read Array mode. This operation is also initiated by writing FFH into the Command User Interface. Microprocessor read cycles retrieve array data. The device remains enabled for reads until the Command User Interface contents are altered. Once the internal Write State Machine has started a block erase or byte write operation, the device will not recognize the Read Array command, until the WSM has completed its operation. The Read Array command is functional when $V_{PP}=V_{PPL}$ or V_{PPH} .

Intelligent Identifier Command

The LH28F008SAT-K85 contains an intelligent identifier operation, initiated by writing 90H into the Command User Interface. Following the command write, a read cycle from address 00000H retrieves the manufacturer code of 89H. A read cycle from address 00001H returns the device code of A2H. To terminate the operation, it is necessary to write another valid command into the register. Like the Read Array command, the intelligent identifier command is functional when $V_{PP}=V_{PPL}$ or V_{PPH} .

Table 4. Status Register Definitions

| | | | | | | | |
|------|-----|----|-----|------|---|---|---|
| WSMS | ESS | ES | BWS | VPPS | R | R | R |
| 7 | 6 | 5 | 4 | 3 | 2 | 1 | 0 |

SR. 7 = WRITE STATE MACHINE STATUS (WSMS)
 1 = Ready
 0 = Busy

SR. 6 = ERASE SUSPEND STATUS (ESS)
 1 = Erase Suspended
 0 = Erase in Progress/Completed

SR. 5 = ERASE STATUS (ES)
 1 = Error in Block Erasure
 0 = Successful Block Erase

SR. 4 = BYTE WRITE STATUS (BWS)
 1 = Error in Byte Write
 0 = Successful Byte Write

SR. 3 = V_{PP} STATUS (VPPS)
 1 = V_{PP} Low Detect: Operation Abort
 0 = V_{PP} OK

SR. 2-0 = RESERVED FOR FUTURE (R) ENHANCEMENTS

NOTES:

RY/ \overline{BY} or the Write State Machine Status bit must first be checked to determine byte write or block erase completion, before the Byte Write or Erase Status bit are checked for success. If the Byte Write AND Erase Status bits are set to "1"s during a block erase attempt, an improper command sequence was entered. Attempt the operation again.

If V_{PP} low status is detected, the Status Register must be cleared before another byte write or block erase operation is attempted. The V_{PP} Status bit, unlike an A/D converter, does not provide continuous indication of V_{PP} level. The WSM interrogates the V_{PP} level only after the byte write or block erase command sequences have been entered and informs the system if V_{PP} has not been switched on. The V_{PP} Status bit is not guaranteed to report accurate feedback between V_{PDL} and V_{PPH} .

These bits are reserved for future use and should be masked out when polling the Status Register.

Read Status Register Command

The LH28F008SAT-K85 contains a Status Register which may be read to determine when a byte write or block erase operation is complete, and whether that operation completed successfully. The Status Register may be read at any time by writing the Read Status Register command (70H) to the Command User Interface. After writing this command, all subsequent read operations output data from the Status Register, until another valid command is written to the Command User Interface. The contents of the Status Register are latched on the falling edge of \overline{OE} or \overline{CE} , whichever occurs last in the read cycle. \overline{OE} or \overline{CE} must be toggled to V_{IH} before further reads to update the Status Register latch. The Read Status Register command functions when $V_{PP}=V_{PPL}$ or V_{PPH} .

Clear Status Register Command

The Erase Status and Byte Write Status bits are set to "1"s by the Write State Machine and can only be reset by the Clear Status Register Command. These bits indicate various failure conditions (see Table 4). By allowing system software to control the resetting of these bits, several operations may be performed (such as cumulatively writing several bytes or erasing multiple blocks in sequence). The Status Register may then be polled to determine if an error occurred during that sequence. This adds flexibility to the way the device may be used.

Additionally, the V_{PP} Status bit (SR.3) MUST be reset by system software before further byte writes or block erases are attempted. To clear the Status Register, the Clear Status Register command (50H) is written to the Command User Interface. The Clear Status Register command is functional when $V_{PP}=V_{PPL}$ or V_{PPH} .

Erase Setup/Erase Confirm Commands

Erase is executed one block at a time, initiated by a two-cycle command sequence. An Erase Setup command (20H) is first written to the Command User Interface, followed by the Erase Confirm command (D0H). These commands require both appropriate sequencing and an address within the block to be erased to FFH. Block preconditioning, erase and verify are all handled internally by the Write State Machine, invisible to the system. After the two-command erase sequence is written to it, the LH28F008SAT-K85 automatically outputs Status Register data when read (see Figure 6; Block Erase Flowchart). The CPU can detect the completion of the erase event by ana-

lyzing the output of the RY/ \overline{BY} pin, or the WSM Status bit of the Status Register.

When erase is completed, the Erase Status bit should be checked. If erase error is detected, the Status Register should be cleared. The Command User Interface remains in Read Status Register mode until further commands are issued to it.

This two-step sequence of set-up followed by execution ensures that memory contents are not accidentally erased. Also, reliable block erasure can only occur when $V_{PP}=V_{PPH}$. In the absence of this high voltage, memory contents are protected against erasure. If block erase is attempted while $V_{PP}=V_{PPL}$, the V_{PP} Status bit will be set to "1". Erase attempts while $V_{PPL}<V_{PP}<V_{PPH}$ produce spurious results and should not be attempted.

Erase Suspend/Erase Resume Commands

The Erase Suspend command allows block erase interruption in order to read data from another block of memory. Once the erase process starts, writing the Erase Suspend command (B0H) to the Command User Interface requests that the WSM suspend the erase sequence at a predetermined point in the erase algorithm. The LH28F008SAT-K85 continues to output Status Register data when read, after the Erase Suspend command is written to it. Polling the WSM Status and Erase Suspend Status bits will determine when the erase operation has been suspended (both will be set to "1"). RY/ \overline{BY} will also transition to V_{OH} .

At this point, a Read Array command can be written to the Command User Interface to read data from blocks other than that which is suspended. The only other valid commands at this time are Read Status Register (70H) and Erase Resume (D0H), at which time the WSM will continue with the erase process. The Erase Suspend Status and WSM Status bits of the Status Register will be automatically cleared and RY/ \overline{BY} will return to V_{OL} . After the Erase Resume command is written to it, the LH28F008SAT-K85 automatically outputs Status Register data when read (see Figure 7; Erase Suspend/Resume Flowchart). V_{PP} must remain at V_{PPH} while the LH28F008SAT-K85 is in Erase Suspend.

Byte Write Setup/Write Commands

Byte write is executed by a two-command sequence. The Byte Write Setup command (40H or 10H) is written to the Command User Interface, followed by a second write specifying the address and data (latched on the rising edge of \overline{WE}) to be written. The WSM then takes over, controlling the byte write and write verify algorithms internally. After the two-command byte write sequence is written to it, the LH28F008SAT-K85 automatically outputs Status Register data when read (see Figure 5; Byte Write Flowchart). The CPU can detect the completion of the byte write event by analyzing the output of the RY/ \overline{BY} pin, or the WSM Status bit of the Status Register. Only the Read Status Register command is valid while byte write is active.

When byte write is complete, the Byte Write Status bit should be checked. If byte write error is detected, the Status Register should be cleared. The internal WSM verify only detects errors for "1"s that do not successfully write to "0"s. The Command User Interface remains in Read Status Register mode until further commands are issued to it. If byte write is attempted while $V_{PP}=V_{PPL}$, the V_{PP} Status bit will be set to "1". Byte write attempts while $V_{PPL}<V_{PP}<V_{PPH}$ produce spurious results and should not be attempted.

6. EXTENDED BLOCK ERASE/BYTE WRITE CYCLING

The LH28F008SAT-K85 is designed for 100,000 byte write/block erase cycles on each of the sixteen 64 Kbyte blocks. Low electric fields, advanced oxides and minimal oxide area per cell subjected to the tunneling electric field combine to greatly reduce oxide stress and the probability of failure. A 20 Mbyte solid-state drive using an array of LH28F008SAXX-KXXX's has a MTBF (Mean Time Between Failure) of 33.3 million hours⁽¹⁾, over 600 times more reliable than equivalent rotating disk technology.

7. AUTOMATED BYTE WRITE

The LH28F008SAT-K85 integrates the Quick-Pulse programming algorithm using the Command User Interface, Status Register and Write State Machine (WSM). On-chip integration dramatically simplifies system software and provides processor interface timings to the Command User Interface and Status Register. WSM operation, internal verify and V_{PP} high voltage presence are monitored and reported via the RY/ \overline{BY} output and appropriate Status Register bits. Figure 5 shows a system software flowchart for device byte write. The entire sequence is performed with V_{PP} at V_{PPH} .

Byte write abort occurs when \overline{RP} transitions to V_{IL} , or V_{PP} drops to V_{PPL} . Although the WSM is halted, byte data is partially written at the location where byte write was aborted. Block erasure, or a repeat of byte write, is required to initialize this data to a known value.

8. AUTOMATED BLOCK ERASE

As above, the Quick-Erase algorithm is now implemented internally, including all preconditioning of block data. WSM operation, erase success and V_{PP} high voltage presence are monitored and reported through RY/ \overline{BY} and the Status Register. Additionally, if a command other than Erase Confirm is written to the device following Erase Setup, both the Erase Status and Byte Write Status bits will be set to "1"s. When issuing the Erase Setup and Erase Confirm commands, they should be written to an address within the address range of the block to be erased. Figure 6 shows a system software flowchart for block erase.

Erase typically takes 1.6 seconds per block. The Erase Suspend/Erase Resume command sequence allows suspension of this erase operation to read data from a block other than that in which erase is being performed. A system software flowchart is shown in Figure 7.

The entire sequence is performed with V_{PP} at V_{PPH} . Abort occurs when \overline{RP} transitions to V_{IL} or V_{PP} falls to V_{PPL} , while erase is in progress. Block data is partially erased by this operation, and a repeat of erase is required to obtain a fully erased block.

9. DESIGN CONSIDERATIONS

Three-Line Output Control

The LH28F008SAT-K85 will often be used in large memory arrays. SHARP provides three control inputs to accommodate multiple memory connections. Three-line control provides for:

- lowest possible memory power dissipation
- complete assurance that data bus contention will not occur

To efficiently use these control inputs, an address decoder should enable \overline{CE} while \overline{OE} should be connected to all memory devices and the system's \overline{READ} control line. This assures that only selected memory devices have active outputs while deselected memory devices are in Standby Mode. Finally, \overline{RP} should either be tied to the system \overline{RESET} , or connected to V_{CC} if unused.

(1) Assumptions: 10 Kbyte file written every 10 minutes. (20 Mbyte array)/(10 Kbyte file) = 2,000 file writes before erase required.
 (2000 files writes/erase) x (100,000 cycles per LH28F008SAT-K85 block) = 200 million file writes.
 (200 x 10⁶ file writes) x (10 min/write) x (1 hr/60 min) = 33.3 x 10⁶ MTBF

RY/ $\overline{\text{BY}}$ and $\overline{\text{BY}}$ Write/Block Erase Polling

RY/ $\overline{\text{BY}}$ is a full CMOS output that provides a hardware method of detecting byte write and block erase completion. It transitions low time t_{WHRL} after a write or erase command sequence is written to the LH28F008SAT-K85, and returns to V_{OH} when the WSM has finished executing the internal algorithm.

RY/ $\overline{\text{BY}}$ can be connected to the interrupt input of the system CPU or controller. It is active at all times, not tristated if the LH28F008SAT-K85 $\overline{\text{CE}}$ or $\overline{\text{OE}}$ inputs are brought to V_{IH} . RY/ $\overline{\text{BY}}$ is also V_{OH} when the device is in Erase Suspend or deep powerdown modes.

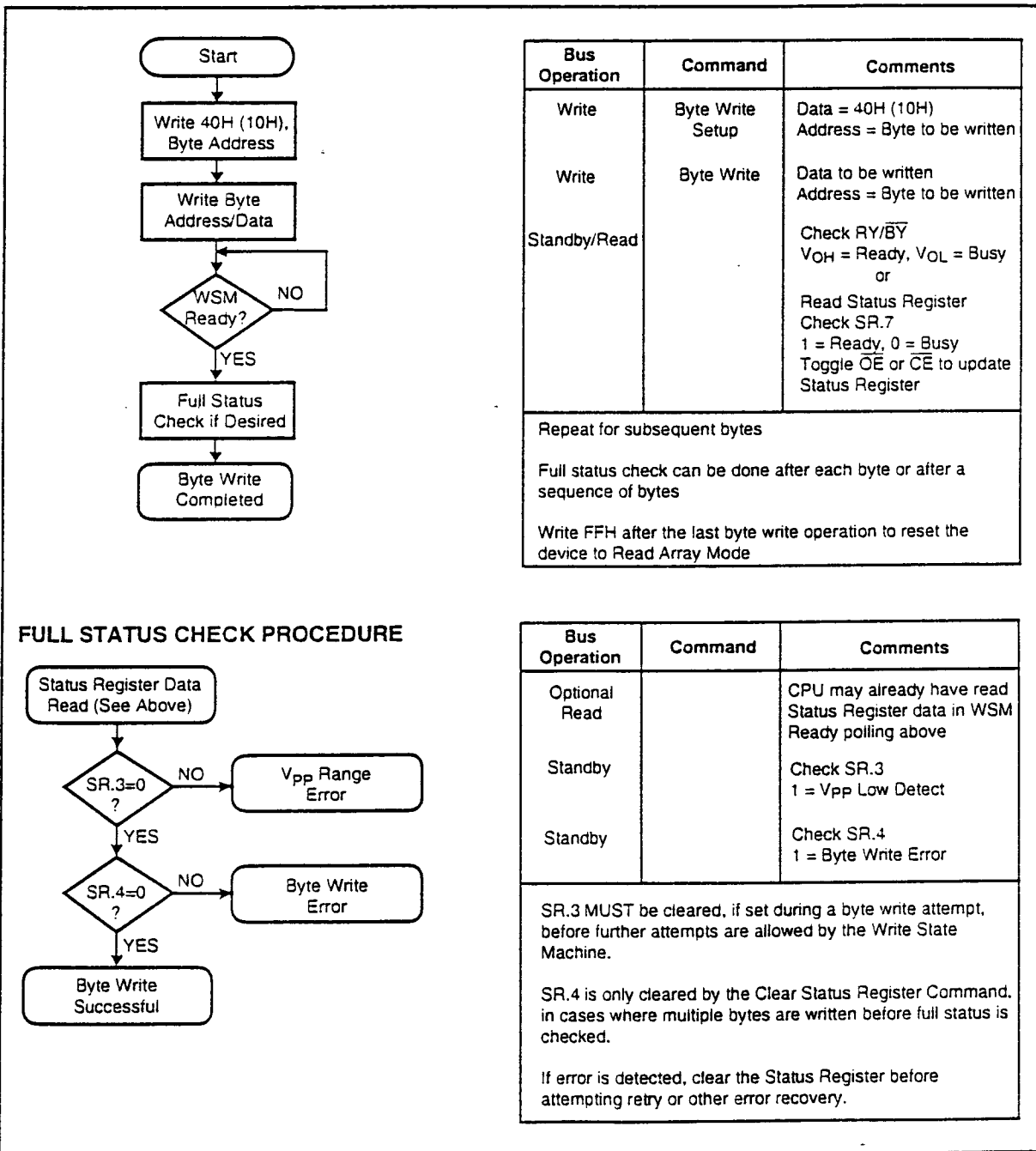


Figure 5. Automated Byte Write Flowchart

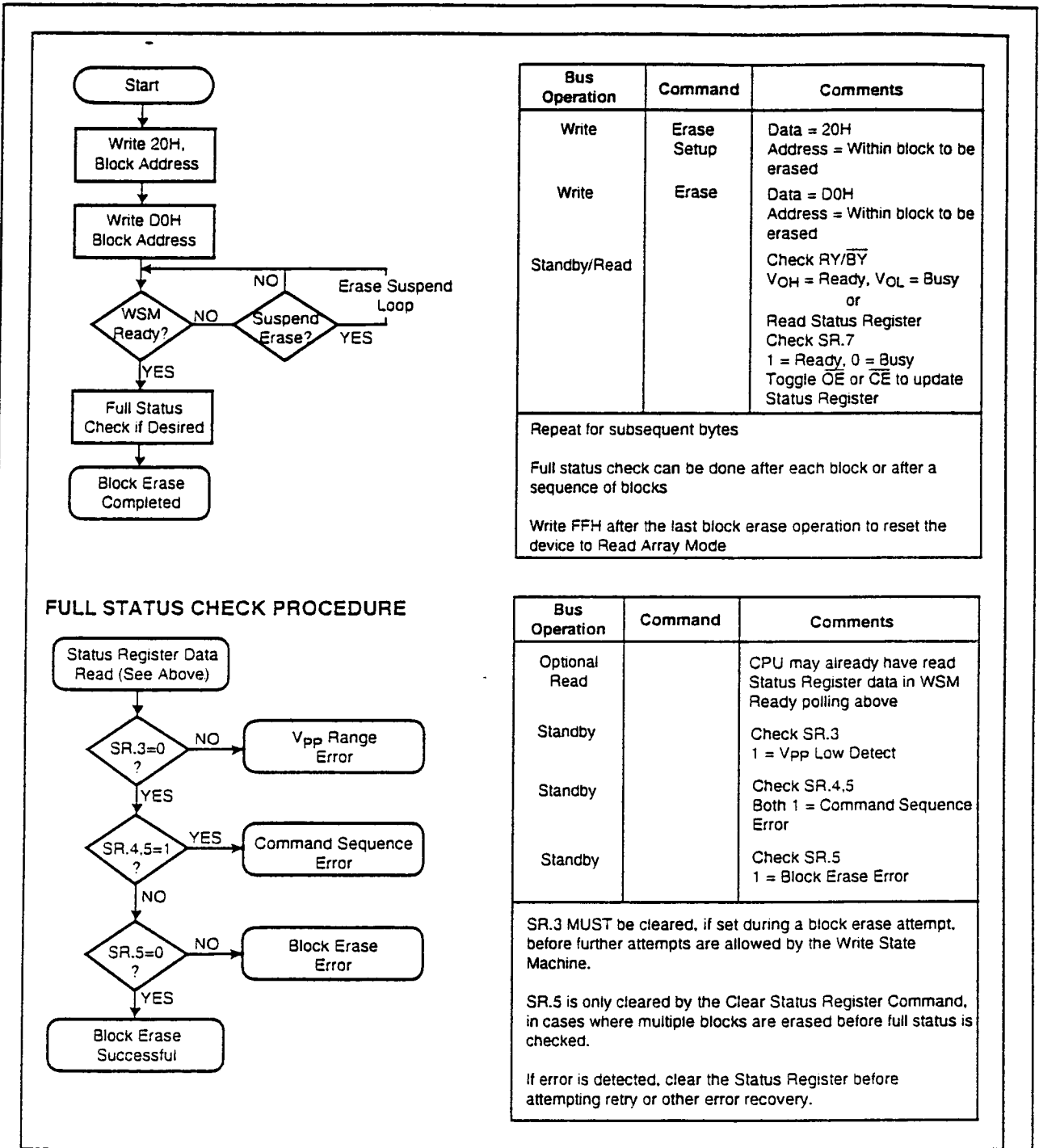


Figure 6. Automated Block Erase Flowchart

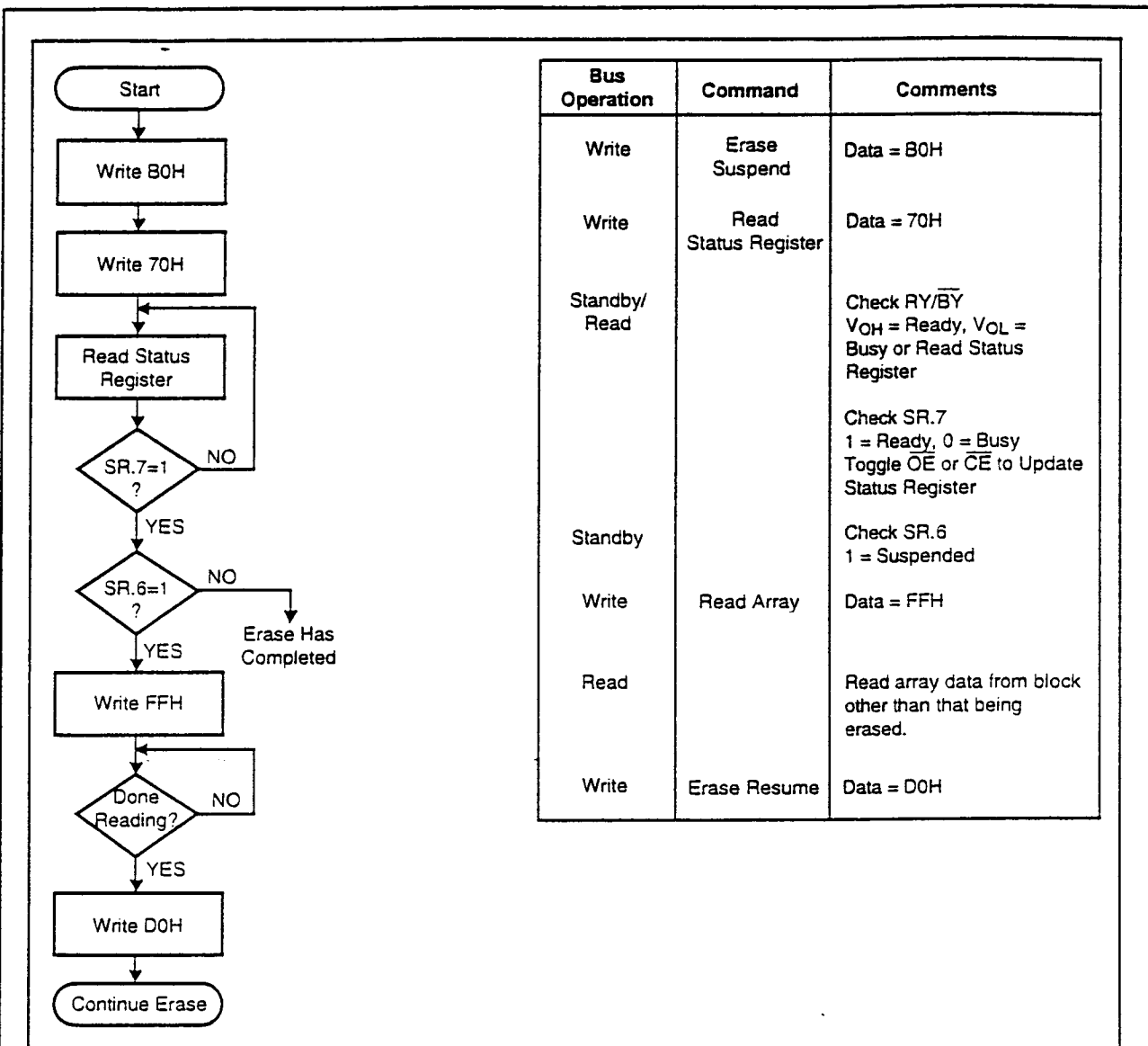


Figure 7. Erase Suspend/Resume Flowchart

Power Supply Decoupling

Flash memory power switching characteristics require careful device decoupling. System designers are interested in 3 supply current issues: standby current levels (I_{SB}), active current levels (I_{CC}) and transient peaks produced by falling and rising edges of $\overline{\text{CE}}$. Transient current magnitudes depend on the device outputs' capacitive and inductive loading. Two-line control and proper decoupling capacitor selection will suppress transient voltage peaks. Each device should have a 0.1 μF ceramic capacitor connected between each V_{CC} and GND, and between its V_{PP} and GND. These high frequency, low inherent-inductance capacitors should be placed as close as possible to package leads. Addition-

ally, for every 8 devices, a 4.7 μF electrolytic capacitor should be placed at the array's power supply connection between V_{CC} and GND. The bulk capacitor will overcome voltage slumps caused by PC board trace inductances.

V_{PP} Trace on Printed Circuit Boards

Writing flash memories, while they reside in the target system, requires that the printed circuit board designer pay attention to the V_{PP} power supply trace. The V_{PP} pin supplies the memory cell current for writing and erasing. Use similar trace widths and layout considerations given to the V_{CC} power bus. Adequate V_{PP} Supply traces and decoupling will decrease V_{PP} voltage spikes and overshoots.

V_{CC} , V_{PP} , \overline{RP} Transitions and the Command/Status Registers

Byte write and block erase completion are not guaranteed if V_{PP} drops below V_{PPH} . If the V_{PP} Status bit of the Status Register (SR.3) is set to "1", a Clear Status Register command MUST be issued before further byte write/block erase attempts are allowed by the WSM. Otherwise, the Byte Write (SR.4) or Erase (SR.5) Status bits of the Status Register will be set to "1"s if error is detected. \overline{RP} transitions to V_{IL} during byte write and block erase also abort the operations. Data is partially altered in either case, and the command sequence must be repeated after normal operation is restored. Device poweroff, or \overline{RP} transitions to V_{IL} , clear the Status Register to initial value 10000 for the upper 5 bits.

The Command User Interface latches commands as issued by system software and is not altered by V_{PP} or \overline{CE} transitions or WSM actions. Its state upon powerup, after exit from deep powerdown or after V_{CC} transitions below V_{LKO} , is Read Array Mode.

After byte write or block erase is complete, even after V_{PP} transitions down to V_{PPL} , the Command User Interface must be reset to Read Array mode via the Read Array command if access to the memory array is desired.

Power Up/Down Protection

The LH28F008SAT-K85 is designed to offer protection against accidental block erasure or byte writing during power transitions. Upon power-up, the LH28F008SAT-K85 is indifferent as to which power supply, V_{PP} or V_{CC} , powers up first. Power supply sequencing is not required. Internal circuitry in the LH28F008SAT-K85 ensures that the Command User Interface is reset to the Read Array mode on power up.

A system designer must guard against spurious writes for V_{CC} voltages above V_{LKO} when V_{PP} is active. Since both \overline{WE} and \overline{CE} must be low for a command write, driving either to V_{IH} will inhibit writes. The Command User Interface architecture provides an added level of protection since alteration of memory contents only occurs after successful completion of the two-step command sequences.

Finally, the device is disabled until \overline{RP} is brought to V_{IH} , regardless of the state of its control inputs. This provides an additional level of memory protection.

Power Dissipation

When designing portable systems, designers must consider battery power consumption not only during device operation, but also for data retention during system idle time. Flash nonvolatility increases usable battery life, because the LH28F008SAT-K85 does not consume any power to retain code or data when the system is off.

In addition, the LH28F008SAXX-KXXX's deep powerdown mode ensures extremely low power dissipation even when system power is applied. For example, portable PCs and other power sensitive applications, using an array of LH28F008SAXX-KXXX's for solid-state storage, can lower \overline{RP} to V_{IL} in standby or sleep modes, producing negligible power consumption. If access to the LH28F008SAT-K85 is again needed, the part can again be read, following the t_{PHQV} and t_{PHWL} wakeup cycles required after \overline{RP} is first raised back to V_{IH} . See AC Characteristics — Read-Only and Write Operations and Figures 8 and 9 for more information.

10. ABSOLUTE MAXIMUM RATINGS*

| | |
|---|---------------------------------------|
| Operating Temperature | |
| During Read |0°C to +70°C ⁽¹⁾ |
| During Block Erase/Byte Write |0°C to +70°C |
| Temperature Under Bias |-10°C to +80°C |
| Storage Temperature |-65°C to +125°C |
| Voltage on Any Pin (except V _{CC} and V _{PP}) | |
| with Respect to GND |-2.0V to +7.0V ⁽²⁾ |
| V _{PP} Program Voltage with Respect to GND during Block Erase/Byte Write |-2.0V to +14.0V ^(2,3) |
| V _{CC} Supply Voltage with Respect to GND |-2.0V to +7.0V ⁽²⁾ |
| Output Short Circuit Current |100mA ⁽⁴⁾ |

* WARNING: Stressing the device beyond the "Absolute Maximum Ratings" may cause permanent damage. These are stress ratings only. Operation beyond the "Operating Conditions" is not recommended and extended exposure beyond the "Operating Conditions" may affect device reliability.

NOTES:

1. Operating temperature is for commercial product defined by this specification.
2. Minimum DC voltage is -0.5V on input/output pins. During transitions, this level may undershoot to -2.0V for periods < 20ns. Maximum DC voltage on input/output pins is V_{CC}+0.5V which, during transitions, may overshoot to V_{CC}+2.0V for periods < 20ns.
3. Maximum DC voltage on V_{PP} may overshoot to +14.0V for periods < 20ns.
4. Output shorted for no more than one second. No more than one output shorted at a time.

11. OPERATING CONDITIONS

| Symbol | Parameter | Notes | Min. | Max. | Unit |
|-----------------|--------------------------------------|-------|------|------|------|
| T _A | Operating Temperature | | 0 | +70 | °C |
| V _{CC} | V _{CC} Supply Voltage (10%) | 1 | 4.50 | 5.50 | V |
| V _{CC} | V _{CC} Supply Voltage (5%) | 1 | 4.75 | 5.25 | V |

NOTE:

1. 5% V_{CC} specifications reference the LH28F008SAXX-KX85 in its High Speed configuration. 10% V_{CC} specifications reference the LH28F008SAXX-KX85 in its Standard configuration.

12. DC CHARACTERISTICS

T_A=0~+70°C

| Symbol | Parameter | Notes | Min. | Typ. | Max. | Unit | Test Condition |
|------------------|--|-------|------|------|------|------|---|
| I _{LI} | Input Load Current | 1 | | | ±1.0 | μA | V _{CC} =V _{CC} Max V _{IN} =V _{CC} or GND |
| I _{LO} | Output Leakage Current | 1 | | | ±10 | μA | V _{CC} =V _{CC} Max V _{OUT} =V _{CC} or GND |
| I _{CCS} | V _{CC} Standby Current | 1, 3 | | 1.0 | 2.0 | mA | V _{CC} =V _{CC} Max CE=RP=V _{IH} |
| | | | | 30 | 100 | μA | V _{CC} =V _{CC} Max CE=RP=V _{CC} ±0.2V |
| I _{CCD} | V _{CC} Deep PowerDown Current | 1 | | 0.2 | 16 | μA | RP=GND ±0.2V I _{OUT} (RY/BY)=0mA |
| I _{CCR} | V _{CC} Read Current | 1 | | 20 | 35 | mA | V _{CC} =V _{CC} Max, CE=GND f=8MHz, I _{OUT} =0mA CMOS Inputs |
| | | | | 25 | 50 | mA | V _{CC} =V _{CC} Max, CE=V _{IL} f=8MHz, I _{OUT} =0mA TTL Inputs |

DC CHARACTERISTICS (Continued)

| Symbol | Parameter | Notes | Min. | Typ. | Max. | Unit | Test Condition |
|------------|--|-------|--------------|------|--------------|---------|---|
| I_{CCW} | V_{CC} Byte Write Current | 1 | | 10 | 30 | mA | Byte Write In Progress |
| I_{CCE} | V_{CC} Block Erase Current | 1 | | 10 | 30 | mA | Block Erase In Progress |
| I_{CCES} | V_{CC} Erase Suspend Current | 1,2 | | 5 | 10 | mA | Block Erase Suspended $\overline{CE}=V_{IH}$ |
| I_{PPS} | V_{PP} Standby Current | 1 | | | +15/ -300 | μ A | $V_{PP}=GND$ |
| I_{PPD} | V_{PP} Deep PowerDown Current | 1 | | 0.1 | 5.0 | μ A | $\overline{RP}=GND \pm 0.2V$ |
| I_{PPR} | V_{PP} Read Current | 1 | | | 200 | μ A | $V_{PP}>V_{CC}$ |
| I_{PPW} | V_{PP} Byte Write Current | 1 | | 10 | 30 | mA | $V_{PP}=V_{PPH}$ Byte Write in Progress |
| I_{PPE} | V_{PP} Block Erase Current | 1 | | 10 | 30 | mA | $V_{PP}=V_{PPH}$ Block Erase in Progress |
| I_{PPES} | V_{PP} Erase Suspend Current | 1 | | 90 | 200 | μ A | $V_{PP}=V_{PPH}$ Block Erase Suspended |
| V_{IL} | Input Low Voltage | | -0.5 | | 0.8 | V | |
| V_{IH} | Input High Voltage | | 2.0 | | $V_{CC}+0.5$ | V | |
| V_{OL} | Output Low Voltage | 3 | | | 0.45 | V | $V_{CC}=V_{CC}$ Min $I_{OL}=5.8mA$ |
| V_{OH1} | Output High Voltage (TTL) | 3 | 2.4 | | | V | $V_{CC}=V_{CC}$ Min $I_{OH}=-2.5mA$ |
| V_{OH2} | Output High Voltage (CMOS) | | $0.85V_{CC}$ | | | V | $I_{OH}=-2.5\mu A$ $V_{CC}=V_{CC}$ Min |
| | | | $V_{CC}-0.4$ | | | | $I_{OH}=-100\mu A$ $V_{CC}=V_{CC}$ Min |
| V_{PPL} | V_{PP} during Normal Operations | 4 | 0.0 | | 6.5 | V | |
| V_{PPH} | V_{PP} during Erase/Write Operations | | 11.4 | 12.0 | 12.6 | V | |
| V_{LKO} | V_{CC} Erase/Write Lock Voltage | | 2.0 | | | V | |

NOTES:

- All currents are in RMS unless otherwise noted. Typical values at $V_{CC}=5.0V$, $V_{PP}=12.0V$, $T_A=+25^\circ C$. These currents are valid for all product versions (package and speeds).
- I_{CCES} is specified with the device deselected. If read while in Erase Suspend Mode, current draw is the sum of I_{CCES} and I_{CCR} .
- Includes $\overline{RY}/\overline{BY}$.
- Block Erases/Byte Writes are inhibited when $V_{PP}=V_{PPL}$ and not guaranteed in the range between V_{PPH} and V_{PPL} .

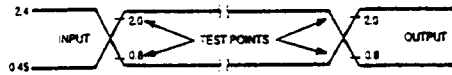
13. CAPACITANCE⁽¹⁾ $T_A=+25^\circ C$, $f=1MHz$

| Symbol | Parameter | Typ. | Max. | Unit | Condition |
|-----------|--------------------|------|------|------|--------------|
| C_{IN} | Input Capacitance | 6 | 8 | pF | $V_{IN}=0V$ |
| C_{OUT} | Output Capacitance | 8 | 12 | pF | $V_{OUT}=0V$ |

NOTE:

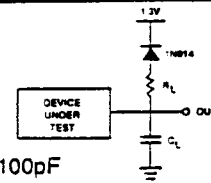
- Sampled, not 100% tested.

AC INPUT/OUTPUT REFERENCE WAVEFORM(1)



AC test inputs are driven at V_{OH} (2.4V_{TTL}) for a Logic "1" and V_{OL} (0.45V_{TTL}) for a Logic "0". Input timing begins at V_{IH} (2.0V_{TTL}) and V_{IL} (0.8V_{TTL}). Output timing ends at V_{IH} and V_{IL} . Input rise and fall times (10% to 90%) < 10ns.

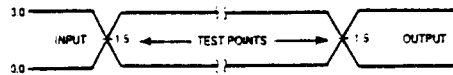
AC TESTING LOAD CIRCUIT(1)



$C_L=100\text{pF}$
 C_L Includes Jig Capacitance
 $R_L=3.3\text{k}\Omega$

HIGH SPEED

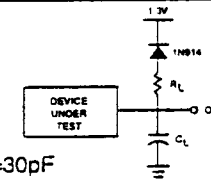
AC INPUT/OUTPUT REFERENCE WAVEFORM(2)



AC test inputs are driven at 3.0V for a Logic "1" and 0.0V for a Logic "0". Input timing begins, and output timing ends, at 1.5V. Input rise and fall times (10% to 90%) < 10ns.

HIGH SPEED

AC TESTING LOAD CIRCUIT(2)



$C_L=30\text{pF}$
 C_L Includes Jig Capacitance
 $R_L=3.3\text{k}\Omega$

NOTES:

1. Testing characteristics for LH28F008SAXX-KX85 in Standard configuration.
2. Testing characteristics for LH28F008SAXX-KX85 in High Speed configuration.

14. AC CHARACTERISTICS — Read-Only Operations⁽¹⁾

| Versions | | Parameter | Notes | LH28F008SAXX-KX85 ⁽⁴⁾ | | LH28F008SAXX-KX85 ⁽⁵⁾ | | Unit |
|------------|-----------|---|-------|----------------------------------|------|----------------------------------|------|------|
| | | | | Min. | Max. | Min. | Max. | |
| t_{AVAV} | t_{RC} | Read Cycle Time | | 85 | | 90 | | ns |
| t_{AVQV} | t_{ACC} | Address to Output Delay | | | 85 | | 90 | ns |
| t_{ELQV} | t_{CE} | \overline{CE} to Output Delay | 2 | | 85 | | 90 | ns |
| t_{PHQV} | t_{PWH} | \overline{RP} High to Output Delay | | | 400 | | 400 | ns |
| t_{GLQV} | t_{OE} | \overline{OE} to Output Delay | 2 | | 40 | | 45 | ns |
| t_{ELQX} | t_{LZ} | \overline{CE} to Output Low Z | 3 | 0 | | 0 | | ns |
| t_{EHQZ} | t_{HZ} | \overline{CE} High to Output High Z | 3 | | 55 | | 55 | ns |
| t_{GLQX} | t_{OLZ} | \overline{OE} to Output Low Z | 3 | 0 | | 0 | | ns |
| t_{GHQZ} | t_{DF} | \overline{OE} High to Output High Z | 3 | | 30 | | 30 | ns |
| | t_{OH} | Output Hold from Addresses, \overline{CE} or \overline{OE} Change, Whichever is First | 3 | 0 | | 0 | | ns |

NOTES:

1. See AC Input/Output Reference Waveform for timing measurements.
2. \overline{OE} may be delayed up to $t_{CE}-t_{OE}$ after the falling edge of \overline{CE} without impact on t_{CE} .
3. Sampled, not 100% tested.
4. See High Speed AC Input/Output Reference Waveforms and High Speed AC Testing Load circuits for testing characteristics.
5. See AC Input/Output Reference Waveforms and AC Testing Load Circuits for testing characteristics.

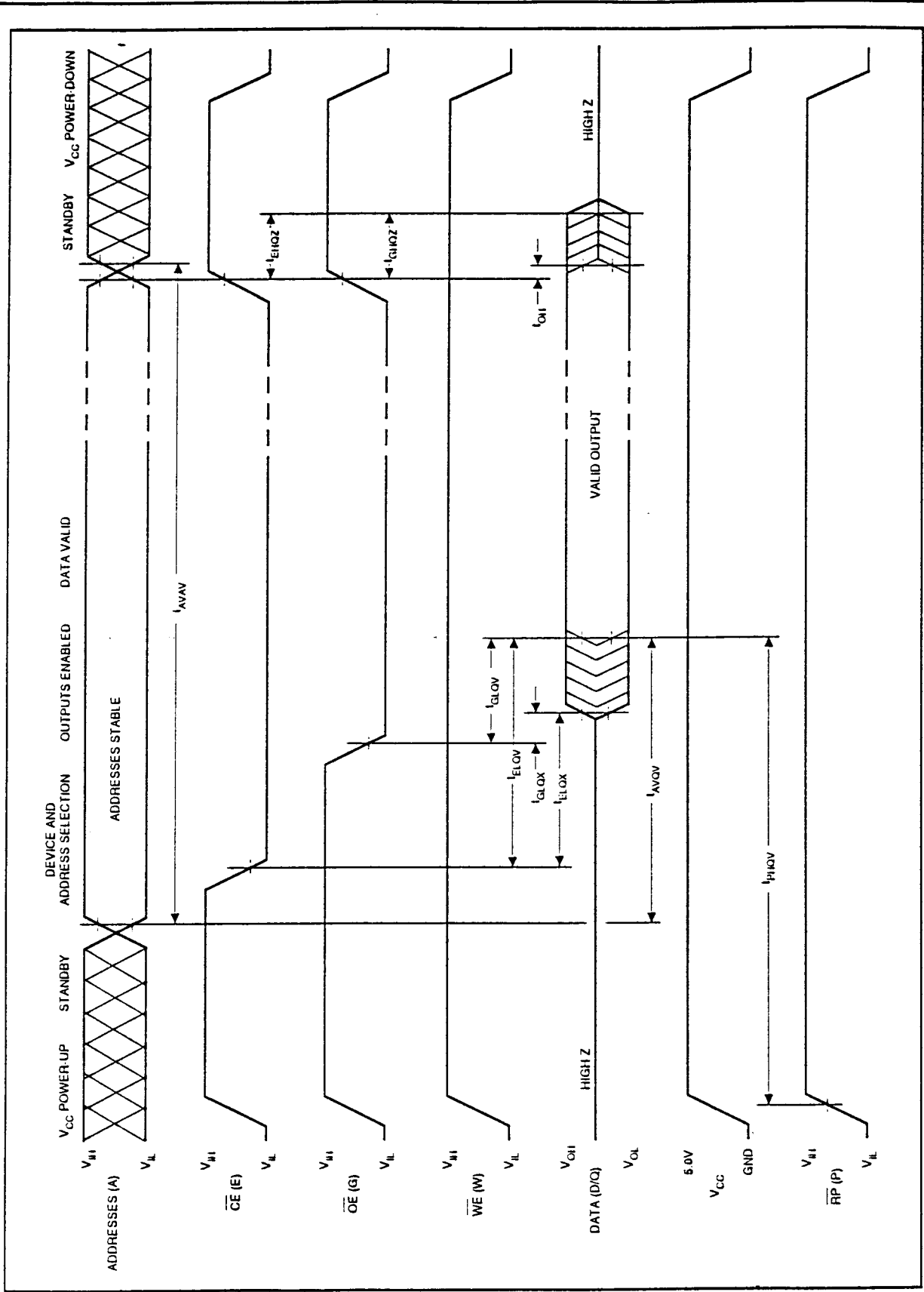


Figure 8. AC Waveform for Read Operations

AC CHARACTERISTICS - Write Operations⁽¹⁾

| Versions | | Parameter | Notes | LH28F008SAXX-KX85 ⁽⁷⁾ | | LH28F008SAXX-KX85 ⁽⁸⁾ | | Unit |
|--------------------|------------------|---|-------|----------------------------------|------|----------------------------------|------|------|
| | | | | V _{CC} ±5% | | Min. | Max. | |
| Symbol | | | | Min. | Max. | Min. | Max. | |
| t _{AVAV} | t _{WC} | Write Cycle Time | | 85 | | 90 | | ns |
| t _{PHWL} | t _{PS} | \overline{RP} High Recovery to \overline{WE} Going Low | 2 | 1 | | 1 | | μs |
| t _{ELWL} | t _{CS} | \overline{CE} Setup to \overline{WE} Going Low | | 10 | | 10 | | ns |
| t _{WLWH} | t _{WP} | \overline{WE} Pulse Width | | 40 | | 40 | | ns |
| t _{VPWH} | t _{VPS} | V _{PP} Setup to \overline{WE} Going High | 2 | 100 | | 100 | | ns |
| t _{AVWH} | t _{AS} | Address Setup to \overline{WE} Going High | 3 | 40 | | 40 | | ns |
| t _{DVWH} | t _{DS} | Data Setup to \overline{WE} Going High | 4 | 40 | | 40 | | ns |
| t _{WHDX} | t _{DH} | Data Hold from \overline{WE} High | | 5 | | 5 | | ns |
| t _{WHAX} | t _{AH} | Address Hold from \overline{WE} High | | 5 | | 5 | | ns |
| t _{WHEH} | t _{CH} | \overline{CE} Hold from \overline{WE} High | | 10 | | 10 | | ns |
| t _{WHWL} | t _{WPH} | \overline{WE} Pulse Width High | | 30 | | 30 | | ns |
| t _{WHRL} | | \overline{WE} High to RY/ \overline{BY} Going Low | | | 100 | | 100 | ns |
| t _{WHQV1} | | Duration of Byte Write Operation | 5, 6 | 6 | | 6 | | μs |
| t _{WHQV2} | | Duration of Block Erase Operation | 5, 6 | 0.3 | | 0.3 | | s |
| t _{WHGL} | | Write Recovery before Read | | 0 | | 0 | | ns |
| t _{QVVL} | t _{VPH} | V _{PP} Hold from Valid SRD, RY/ \overline{BY} High | 2, 6 | 0 | | 0 | | ns |

NOTES:

1. Read timing characteristics during erase and byte write operations are the same as during read-only operations. Refer to AC Characteristics for Read-Only Operations.
2. Sampled, not 100% tested.
3. Refer to Table 3 for valid A_W for byte write or block erasure.
4. Refer to Table 3 for valid D_W for byte write or block erasure.
5. The on-chip Write State Machine incorporates all byte write and block erase system functions and overhead of standard SHARP flash memory, including byte program and verify (byte write) and block precondition, precondition verify, erase and erase verify (block erase).
6. Byte write and block erase durations are measure to completion (SR.7=1, RY/ \overline{BY} =V_{OH}). V_{PP} should be held at V_{PPH} until determination of byte write/block erase success (SR.3/4/5=0).
7. See High Speed AC Input/Output Reference Waveforms and High Speed AC Testing Load Circuits for testing characteristics.
8. See AC Input/Output Reference Waveforms and AC Testing Load Circuits for testing characteristics.

15. BLOCK-ERASE AND BYTE WRITE PERFORMANCE

| Parameter | Notes | LH28F008SAXX-KXXX | | | Unit |
|------------------|-------|-------------------|---------------------|----------|------|
| | | Min. | Typ. ⁽¹⁾ | Max. | |
| Block Erase Time | 2 | | 1.6 | 10 | s |
| Block Write Time | 2 | | 0.6 | 2.1 | s |
| Byte Write Time | | | 8 | (Note 3) | μs |

NOTES:

1. 25°C, 12.0V V_{pp}.
2. Excludes System-Level Overhead.
3. Contact your SHARP representative for information on the maximum byte write specification.

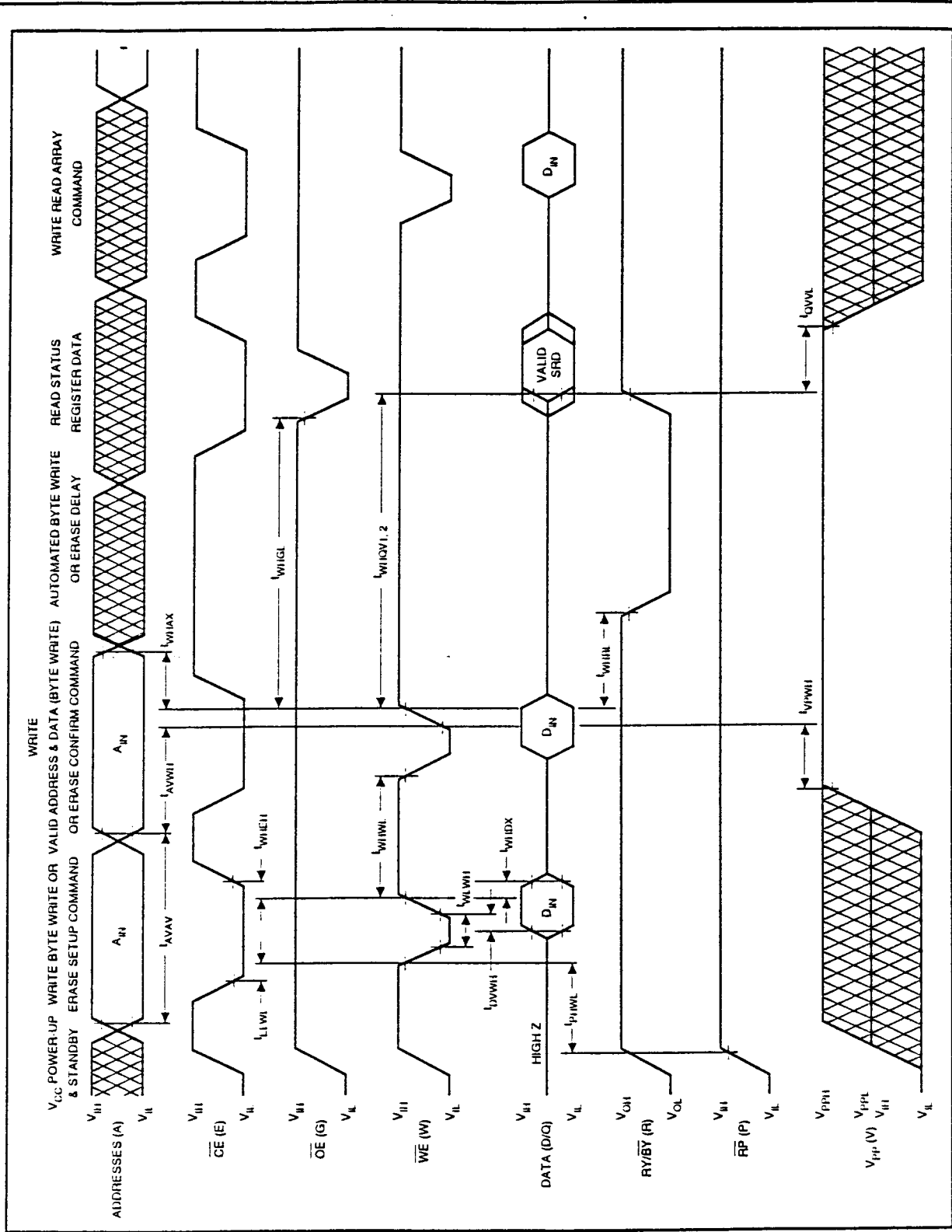


Figure 9. AC Waveform for Write Operations

16. ALTERNATIVE \overline{CE} -CONTROLLED WRITES⁽¹⁾

| Versions | | Parameter | Notes | LH28F008SAXX-KX85 ⁽⁶⁾ | | LH28F008SAXX-KX85 ⁽⁷⁾ | | Unit |
|-------------|-----------|--|-------|----------------------------------|------|----------------------------------|------|---------|
| | | | | $V_{CC} \pm 5\%$ | | $V_{CC} \pm 10\%$ | | |
| Symbol | | | | Min. | Max. | Min. | Max. | |
| t_{AVAV} | t_{WC} | Write Cycle Time | | 85 | | 90 | | ns |
| t_{PHEL} | t_{PS} | \overline{RP} High Recovery to \overline{CE} Going Low | 2 | 1 | | 1 | | μs |
| t_{WLEL} | t_{WS} | \overline{WE} Setup to \overline{CE} Going Low | | 0 | | 0 | | ns |
| t_{ELEH} | t_{CP} | \overline{CE} Pulse Width | | 50 | | 50 | | ns |
| t_{VPEH} | t_{VPS} | V_{PP} Setup to \overline{CE} Going High | 2 | 100 | | 100 | | ns |
| t_{AVEH} | t_{AS} | Address Setup to \overline{CE} Going High | 3 | 40 | | 40 | | ns |
| t_{DVEH} | t_{DS} | Data Setup to \overline{CE} Going High | 4 | 40 | | 40 | | ns |
| t_{EHDX} | t_{DH} | Data Hold from \overline{CE} High | | 5 | | 5 | | ns |
| t_{EHAX} | t_{AH} | Address Hold from \overline{CE} High | | 5 | | 5 | | ns |
| t_{EHWH} | t_{WH} | \overline{WE} Hold from \overline{CE} High | | 0 | | 0 | | ns |
| t_{EHEL} | t_{EPH} | \overline{CE} Pulse Width High | | 25 | | 25 | | ns |
| t_{EHRL} | | \overline{CE} High to RY/\overline{BY} Going Low | | | 100 | | 100 | ns |
| t_{EHQV1} | | Duration of Byte Write Operation | 5 | 6 | | 6 | | μs |
| t_{EHQV2} | | Duration of Block Erase Operation | 5 | 0.3 | | 0.3 | | s |
| t_{EHGL} | | Write Recovery before Read | | 0 | | 0 | | ns |
| t_{QVVL} | t_{VPH} | V_{PP} Hold from Valid SRD, RY/\overline{BY} High | 2,5 | 0 | | 0 | | ns |

NOTES:

1. Chip-Enable Controlled Writes: Write operations are driven by the valid combination of \overline{CE} and \overline{WE} . In systems where \overline{CE} defines the write pulsewidth (within a longer \overline{WE} timing waveform), all setup, hold and inactive \overline{WE} times should be measured relative to the \overline{CE} waveform.
2. Sampled, not 100% tested.
3. Refer to Table 3 for valid A_N for byte write or block erasure.
4. Refer to Table 3 for valid D_N for byte write or block erasure.
5. Byte write and block erase durations are measured to completion (SR.7=1, $RY/\overline{BY}=V_{OH}$). V_{PP} should be held at V_{PPH} until determination of byte write/block erase success (SR.3/4.5=0).
6. See High Speed AC Input/Output Reference Waveforms and High Speed AC Testing Load Circuits for testing characteristics.
7. See AC Input/Output Reference Waveforms and AC Testing Load Circuits for testing characteristics.

17 Package and packing specification

1. Package Outline Specification

Refer to drawing No. AA1105

2. Markings

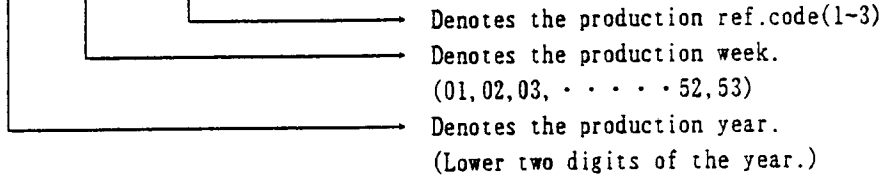
2-1. Marking contents

(1) Product name : LH28F008SAT-K85

(2) Company name : SHARP

(3) Date code

(Example) YY WW XXX Indicates the product was manufactured in the WWth week of 19YY.



(4) The marking of "JAPAN" indicates the country of origin.

2-2. Marking layout

Refer drawing No. AA1105

(This layout does not define the dimensions of marking character and marking position.)

3. Packing Specification (Dry packing for surface mount packages)

Dry packing is used for the purpose of maintaining IC quality after mounting packages on the PCB (Printed Circuit Board).

When the epoxy resin which is used for plastic packages is stored at high humidity, it may absorb 0.15% or more of its weight in moisture. If the surface mount type package for a relatively large chip absorbs a large amount of moisture between the epoxy resin and insert material (e.g. chip, lead frame) this moisture may suddenly vaporize into steam when the entire package is heated during the soldering process (e.g. VPS). This causes expansion and results in separation between the resin and insert material, and sometimes cracking of the package. This dry packing is designed to prevent the above problem from occurring in surface mount packages.

3-1. Packing Materials

| Material Name | Material Specificaiton | Purpose |
|------------------------|-------------------------------------|---|
| Tray | Conductive plastic (50devices/tray) | Fixing of device |
| Upper cover tray | Conductive plastic (1tray/case) | Fixing of device |
| Laminated aluminum bag | Aluminum polyethylene (1bag/case) | Drying of device |
| Desiccant | Silica gel | Drying of device |
| P P band | Polypropylene (3pcs/case) | Fixing of tray |
| Inner case | Card board (500devices/case) | Packaging of device |
| Label | Paper | Indicates part number, quantity and date of manufacture |
| Outer case | Card board | Outer packing of tray |

(Devices shall be placed into a tray in the same direction.)

- 3-2. Outline dimension of tray
Refer to attached drawing

4. Storage and Opening of Dry Packing

- 4-1. Store under conditions shown below before opening the dry packing

- (1) Temperature range : 5~40°C
(2) Humidity : 80% RH or less

- 4-2. Notes on opening the dry packing

- (1) Before opening the dry packing, prepare a working table which is grounded against ESD and use a grounding strap.
(2) The tray has been treated to be conductive or anti-static. If the device is transferred to another tray, use a equivalent tray.

- 4-3. Storage after opening the dry packing

Perform the following to prevent absorption of moisture after opening.

- (1) After opening the dry packing, store the ICs in an environment with a temperature of 5~25°C and a relative humidity of 60% or less and mount ICs within 72 hours after opening dry packing.

- 4-4. Baking (drying) before mounting

- (1) Baking is necessary
(A) If the humidity indicator in the desiccant becomes pink
(B) If the procedure in section 4-3 could not be performed
(2) Recommended baking conditions
If the above conditions (A) and (B) are applicable, bake it before mounting. The recommended conditions are 16~24 hours at 120°C.
Heat resistance tray is used for shipping tray.

5. Surface Mount Conditions

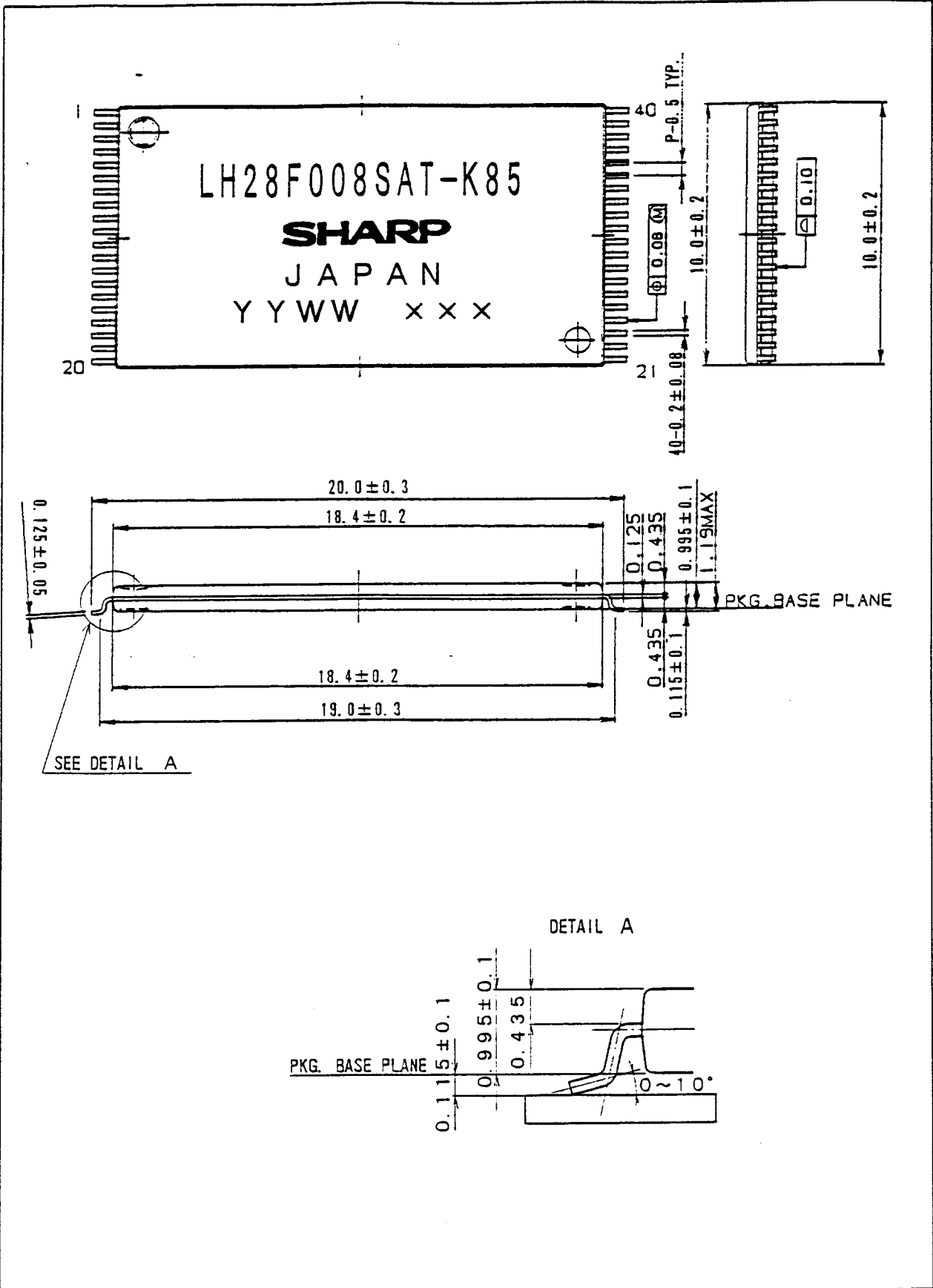
Please perform the following conditions when mounting ICs not to deteriorate IC quality.

- 5-1. Soldering conditions (The following conditions are valid only for one time soldering.)

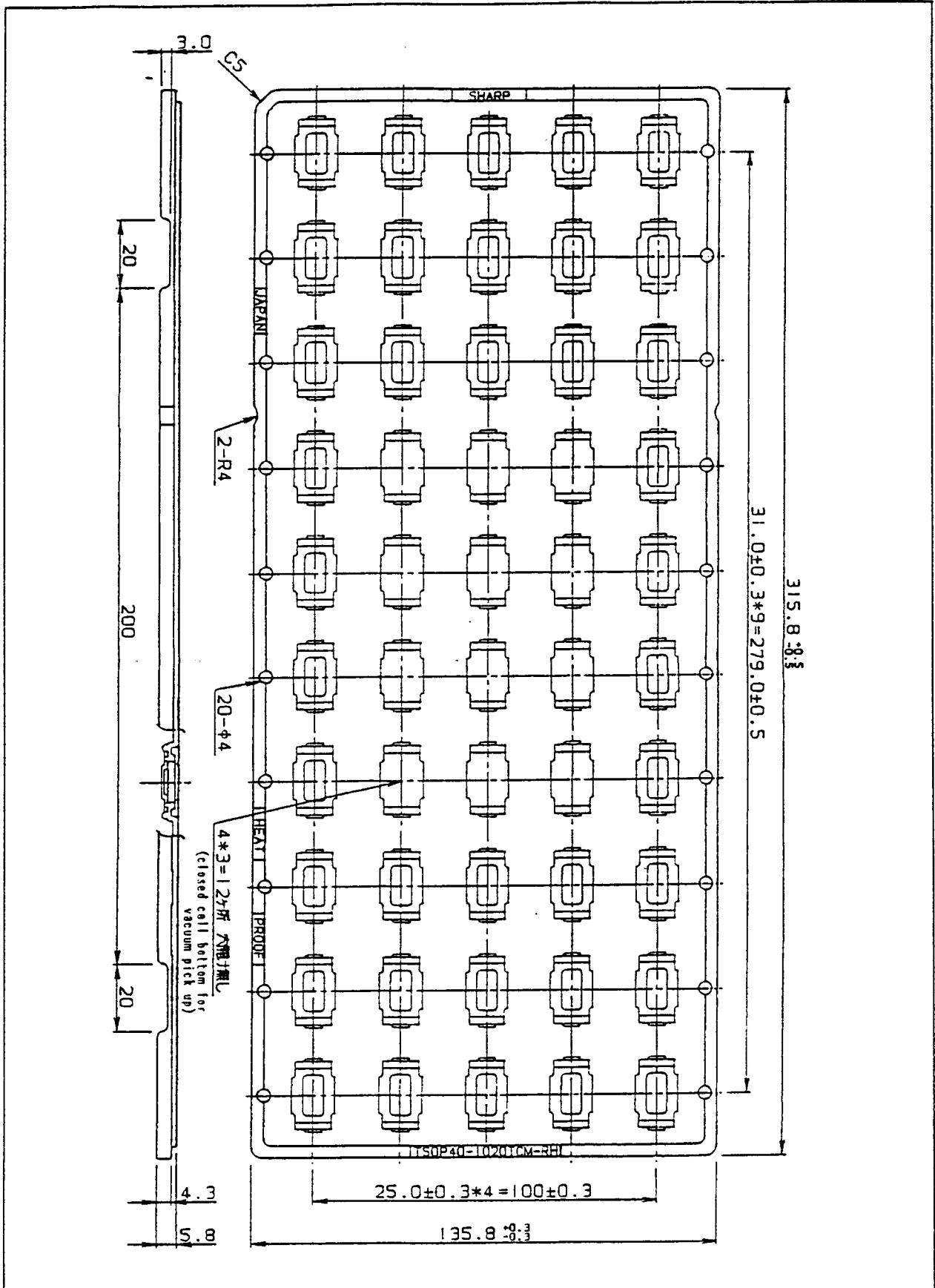
| Mounting Method | Temperature and Duration | Measurement Point |
|--------------------------------------|--|--------------------------|
| Reflow soldering (air) | Peak temperature of 230°C or less, duration of less than 15 seconds. 200°C or over, duration of less than 40 seconds. Temperature increase rate of 1~4°C/second | IC package surface |
| Manual soldering (soldering iron) | 260°C or less, duration of less than 10 seconds. | IC outer lead surface |

- 5-2. Conditions for removal of residual flux

- (1) Ultrasonic washing power : 25 Watts/liter or less
(2) Washing time : Total 1 minute maximum
(3) Solvent temperature : 15~40°C



| | | | | |
|-------------|---------------|-------------|----|--|
| 名称 | リード仕上 | TIN-LEAD | 備考 | プラスチックパッケージ外形は、バリを含まないものとする。 NOTE Plastic body dimensions do not include burr of resin. |
| NAME | TSOP40-P-1020 | LEAD FINISH | | |
| DRAWING NO. | AA1105 | 単位 | mm | |
| | | UNIT | | |

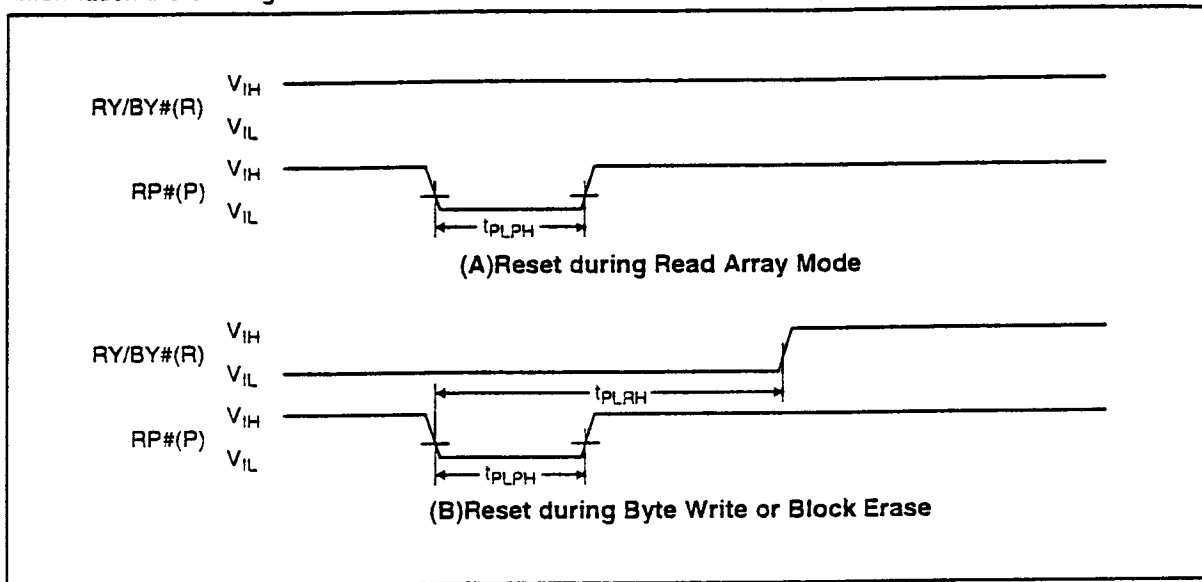


| | | |
|-------------|-------------------|------------|
| 名称 NAME | TSOP40-1020TCM-RH | 備考 NOTE |
| DRAWING NO. | CV644 | UNIT mm |

SPECIFICATION CHANGES

Reset Specifications for the LH28F008SAXX-KXXX

PROBLEM: Two reset specifications have been added to the LH28F008SAXX-KXXX. Please add this information the existing datasheet. The next datasheet revision will incorporate these reset specifications.



AC Waveform for Reset Operation

Reset AC Specifications⁽¹⁾

| Sym | Parameter | Notes | V _{CC} =5V | | Unit |
|-------------------|---|-------|---------------------|------|------|
| | | | Min. | Max. | |
| t _{PLPH} | RP# Pulse Low Time (If RP# is tied to V _{CC} , this specification is not applicable) | | 100 | | ns |
| t _{PLRH} | RP# Low to Reset during Block Erase or Byte Write (If RP# is tied to V _{CC} , this specification is not applicable) | 2,3 | | 12 | s |

NOTES:

1. These specifications are valid for all product versions (packages and speeds).
2. If RP# is asserted while a block erase or byte write operation is not executing, the reset will complete within 100 ns.
3. A reset time, t_{PHQV}, is required from the latter of RY/BY# or RP# going high until outputs are valid.

In read modes, RP#-low deselects the memory, places output drivers in a high impedance state and turns off all internal circuits. RP# must be held low for a minimum of 100 ns. Time t_{PHQV} is required after return from power-down until initial memory access outputs are valid. After this wake-up interval, normal operation is restored. The CUI is reset to read array mode and status register is set to 80H.

During block erase or byte write, RP#-low will abort the operation. RY/BY# remains low until the reset operation is complete. Memory contents being altered are no longer valid; the data may be partially erased or written.

AFFECTED PRODUCTS: All A- χ stepping material is affected.

LH28Fxxx FLASH MEMORY FLASH NON-VOLATILE MEMORY FLASH E2ROM FLASH ROM
READ ONLY MEMORY ETOX LH28F008SAT-K85 8M (1Mx8) Dual Voltage