

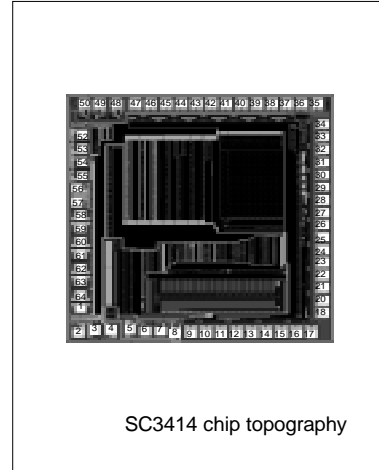
10/12 DIGIT CALCULATOR

DESCRIPTION

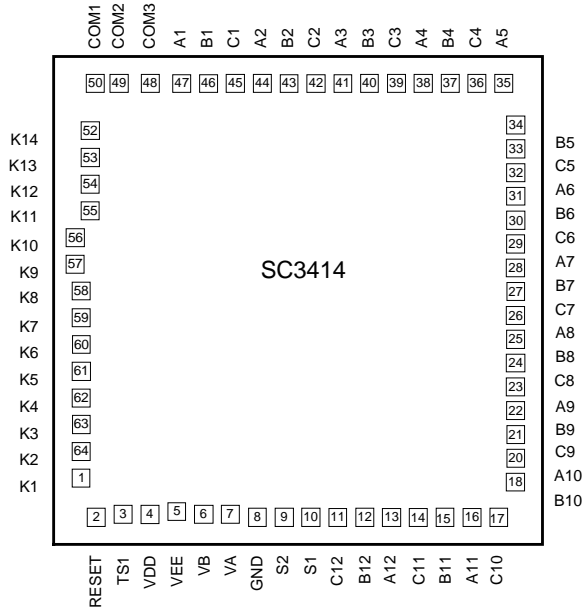
The SC3414 is a single-chip LSI CMOS calculator with 12-digits 2-memory or 10-digits 2-memory. SC3414 can drive the liquid crystal display (LCD) with single power supply. Single power supply operation, wide operating voltage and lower power consumption make it suitable for 1.5V solar battery operated calculator. Beside SC3414 can be selected as Auto Power OFF or Manual Power OFF with Lock Key. It also can be selected as Memory Hold or Clear at Power OFF.

FEATURES

- * Display: 12-digit or 10-digit (selectable with a pin programmable) of data, 1-digits of sign, error, memory load symbol.
- * Algebraic mode
- * Standard 4 function (addition, subtraction, multiplication, division).
- * Memory and Grand total calculation.
- * Accumulating GT memory register with count up (down) item counter.
- * Automatic percentage operation with add-on discount.
- * Automatic delta percentage, mark-up and markdown operations.
- * Square root.
- * Constant calculation.
- * Chain calculation.
- * Change sign.
- * Floating point (selectable with a switch).
- * Fixed point ("0", "1", "2", "3", "4", or "6" selectable with a switch).
- * Adding point mode (selectable with a switch).
- * Rounding switch (rounding up, down and off).
- * Trailing zero suppression.
- * Function on display, commas for thousands.
- * Memory and GT memory contents indicator, turned with nonzero in the memory and GT memory.
- * Complementary output buffer for direct driving of liquid crystal display
- * Memory overflows indicating.
- * Result overflow, indicating during calculation (most function key are locked as it happened).
- * Keyboard encoding internal to chip.
- * Automatic power on clear.
- * Wide supply voltage range (1.1 to 1.8V)
- * Very low power consumption.
- * Floating minus.
- * Key roll over function (2 keys).
- * Oscillator/clock generator internal to chip.
- * Registration overflow, indicating too many digits are entered (the most significant digit is protected).



PAD ASSIGNMENT



Note: The IC substrate should be connected to GND in the PCB layout artwork.

ABSOLUTE MAXIMUM RATING

Characteristic	Symbol	Value	Unit
Supply Voltage	VDD - VSS	-0.3 ~ +2.0	V
Input Voltage	VIN	-0.3 - VDD + 0.3	V
Storage temperature	TSTG	-55 ~ +125	°C
Operating Temperature	TOPT	0 ~ + 50	°C

ELECTRICAL CHARACTERISTICS (VDD = 1.5V±0.2V, GND=0V, TA = 25°C, VEE = 3.0±0.4V)

Parameter	Symbol	Conditions	Min	Typ	Max	Unit
Operating Voltage	VDD		1.1	1.5	1.8	V
K3~K10, RESET Input High Voltage	VIH(1)		VDD-0.4	--	VDD	V
K11~K14 Input Low Voltage	VIH(2)		VEE-0.4	--	VEE	V
K3~K10, RESET Input Low Voltage	VIL		0	--	0.4	V
SEGMENT, COM1~3 Output High Voltage	VOH(1)		VEE-0.2	--	VEE	V
SEGMENT COM1~3 Output Low Voltage	VOL(1)		0	--	0.20	V
COM1~3 Output Middle Voltage	VOM		VDD-0.2	--	VDD+0.2	V

(To be continued)

— HANGZHOU SILAN MICROELECTRONICS JOINT-STOCK CO.,LTD —

(Continued)

Parameter	Symbol	Conditions	Min	Typ	Max	Unit
K1~K10 Output High Voltage	VOH(2)		VDD-0.2	--	VDD	V
K1~K14 Output Low Voltage	VOL(2)		0	--	0.2	V
SEGMENT, COM1~3 Output High Resistance	ROH	VOUT=VEE-0.5V	--	--	70	kΩ
SEGMENT, COM1~3 Output Low Resistance	ROL	VOUT=0.5V	--	--	70	kΩ
K1~K10 Pull Down Resistance	RKEYL(1)	VOUT =V DD	240	--	650	kΩ
K1~K10 Pull Up Resistance	RKEYH(2)	VOUT=0.5V	--	--	10	kΩ
RESET Pull Up Resistance	RKEYH(2)	VOUT=0.5V	50	--	370	kΩ
Oscillating (WAIT)	f0 WAIT	VDD =1.5V	10.8	18	25.2	kHz
Frequency (OPERATE)	f0 OP	VDD =1.5V	57.6	96.0	134.4	kHz
SEGMENT, COM1~3 Frame Frequency	fF	VDD =1.5V	56.3	93.8	131	Hz
Supply Current	IDDWAIT	(WAIT)	--	2.2	3.4	μA
	IDDOP	(OPERATE)	--	7.0	11.0	μA
	IDDOFF	(OFF)	--	--	1.0	μA
Power off Timer Times	T	VDD =1.5V	429	600	1001	SEC

PIN DESCRIPTION

Pin No.	Symbol	I/O	Description
1	K1	O	Key output strobe signal to key
2	RESET	O	System reset
3	TS1	O	Test pin
4	VDD	O	Power supply
5	VEE	O	Connected to capacitor
6	VB	I	Connected as voltage doubler
7	VA	I	Connected as voltage doubler
8	GND	I	Ground
9	S2	O	Output Signal to LCD
10	S1	I	Output Signal to LCD
11	C12	O	Output Signal to LCD
12	B12	O	Output Signal to LCD
13	A12	O	Output Signal to LCD
14	C11	O	Output Signal to LCD
15	B11	O	Output Signal to LCD
16	A11	O	Output Signal to LCD

(To be continued)

 ——— **HANGZHOU SILAN MICROELECTRONICS JOINT-STOCK CO.,LTD** ———

Rev: 1.0 2000.12.31

(Continued)

Pin No.	Symbol	I/O	Description
17	C10	O	Output Signal to LCD
18	B10	O	Output Signal to LCD
20	A10	O	Output Signal to LCD
21	C9	O	Output Signal to LCD
22	B9	O	Output Signal to LCD
23	A9	O	Output Signal to LCD
24	C8	O	Output Signal to LCD
25	B8	O	Output Signal to LCD
26	A8	O	Output Signal to LCD
27	C7	O	Output Signal to LCD
28	B7	O	Output Signal to LCD
29	A7	O	Output Signal to LCD
30	C6	O	Output Signal to LCD
31	B6	O	Output Signal to LCD
32	A6	O	Output Signal to LCD
33	C5	O	Output Signal to LCD
34	B5	O	Output Signal to LCD
35	A5	O	Output Signal to LCD
36	C4	O	Output Signal to LCD
37	B4	O	Output Signal to LCD
38	A4	O	Output Signal to LCD and Output strobe to lock key
39	C3	O	Output Signal to LCD and Output strobe to lock key
40	B3	O	Output Signal to LCD and Output strobe to lock key
41	A3	O	Output Signal to LCD and Output strobe to lock key
42	C2	O	Output Signal to LCD and Output strobe to lock key
43	B2	O	Output Signal to LCD and Output strobe to lock key
44	A2	O	Output Signal to LCD and Output strobe to lock key
45	C1	O	Output Signal to LCD and Output strobe to lock key
46	B1	O	Output Signal to LCD and Output strobe to lock key
47	A1	O	Output Signal to LCD and Output strobe to lock key
48	COM3	O	Common 3 to LCD
49	COM2	O	Common 2 to LCD
50	COM1	O	Common 1 to LCD
52	K14	I	Key input signal

(To be continued)

 ——— **HANGZHOU SILAN MICROELECTRONICS JOINT-STOCK CO.,LTD** ———

Rev: 1.0 2000.12.31

(Continued)

Pin No.	Symbol	I/O	Description
53	K13	I	Key input signal
54	K12	I	Key input signal
55	K11	I	Key input signal
56	K10	I	Key input signal
57	K9	I	Key input signal
58	K8	I/O	Key output strobe signal and key input signal
59	K7	I/O	Key output strobe signal and key input signal
60	K6	I/O	Key output strobe signal and key input signal
61	K5	I/O	Key output strobe signal and key input signal
62	K4	I/O	Key output strobe signal and key input signal
63	K3	I/O	Key output strobe signal and key input signal
64	K2	O	Key output strobe signal to key

FUNCTIONAL DESCRIPTION

A). Operation Characteristics

a). Constant Operation

The SC3414 has implied constant mode on +, -, X, ÷ & % operations. The constant is performed automatically by the "=" key, "%" key, or "%%" key without a constant for addition, subtraction and division while the first operand is the constant for multiplication.

b). Number Entry

Numericals can be entered up to 12-digit.

c). Memory Protection

In any error detection, the memory contents present before the error detection are protected.

d). Memory Indication

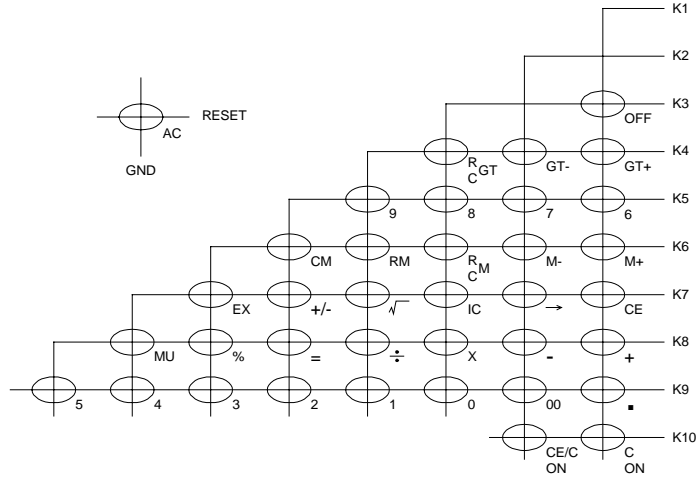
If the memory contents are a number other than zero, "M" is indicated in the sign-digit position.

e). Auto Power Off

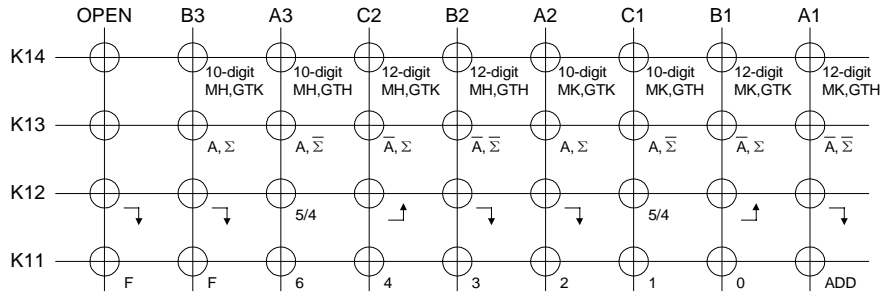
If no key is depressed for a specific period of time, the power supply will automatically turn off (pin option). This time interval up to power-off is 600 sec.

f).Key Definition

i).Touch Key Constitution



ii).Lock Key Constitution



K14: Select with Calculated Digits and Memory Hold Status, MH (Memory Hold), MK (Memory Kill), GTH (GT Memory Hold) and GTX (GT Memory Kill) at Auto Power OFF or OFF key.

K13: Select with Auto Power OFF mode and Total switch.

K12: Rounding switches.

K11: Select with Fixed point or Floating mode.

B). Keyboard Description*a). Equal Key (=)*

- i). Performs Keyed-in operation and maintains that operation for possible use.
- ii). Establishes power/reciprocal calculation.

b). Multiplication Key (\times)

- i). Enters multiplicand.
- ii). Performs previous operation and displays result.

c). Division Key (\div)

- i). Enters dividend.
- ii). Performs previous operation and displays result.

d). Addition Key (+)

- i). Conditions machine for an addition.
- ii). Performs previous operation and displays result.

e). Subtraction Key (-)

- i). Conditions machine for a subtraction.
- ii). Performs previous operation and displays result.

f). Percent Key (%)

The purpose of the percent key is to allow for calculation of add-on and discount. Determination of add-on requires the principal amount to be the first entry followed by the "+" or "X" key, with the percentage being the second entry. Depression of the percent key yields the amount to add on, such as tax or interest. Depression of the "=" key adds this amount to the principal.

g). Change Sign Key (+/-)

Pushing the "+/-" key twice in succession causes the corresponding sign to appear and disappear. During digit entry, this function changes the sign of the entered factor.

h). Power On/All Clear Key (ON/AC)

- i). First push power-on displays "0".
- ii). In the middle of a digit entry, a second push will clear all operating registers).

i). Clear Entry/Clear Key (CE/C)

- i). During the digit entry, the first depression will clear the entry register. And display the previous entered number again.
- ii). The second push will clear all registers.

j). Clear Entry Key (CE)

During the digit entry will clear the entry register and display number "0".

k). Square Root Key ($\sqrt{\quad}$)

Extracts the square root of a positive number displayed in the entry register.

l). Memory Plus Key (M+)

- i). Adds the current display to the contents of memory.
- ii). It will terminate a number entry.

m).Memory Minus Key (M-)

- i).Subtracts the current display from the contents of memory
- ii).It will terminate a number entry.

n).memory Recall and Clear Key (RCM)

- i).First push, as RM key, transfers the contents of the memory register into the display register.
- ii).Second push, as CM key, clears the memory.

o).Number, Decimal Key ("00", "0 - 9", "•")

The first number key in a sequence will clear the display and enter the digit in the display. Successive entries will shift the display left and enters the data in display register. The first decimal point entered is effective. An attempted entry of more than 12 digits or 11decimal places will be ignored.

p).GT Memory Recall and Clear Key (RC GT)

- i).First push, as RGT key, transfers the contents of the GT memory register into the display register.
- ii).Second push, as CGT key, clears the GT memory.

q).Exchange Key (EX)

Exchange two operand between the operator. For example, key in "a-b", and then key in "EX" will exchange a and b to "b-a".

r).Shift Key (→)

Delete the rightest digit and others will shift to right.

s).Item Counter Key (IC)

- i).The "+" and "=" key will increase the counter's contents by one.
- ii).The "-" will decrease it by two.
- iii).The others operator key and number key will not change it.

t).Grand Total Plus (GT+)

Ands the current display to the content of grand total memory.

u).Grand Total Minus (GT-)

Subtracts the current display from the content of grand total memory.
GT- will terminate a number entry.

C). Error Conditions

a).Error Detection

System errors occur when :

- i).The integral part of any calculation result exceeds 12 digits.
- ii).The integral part of any memory calculation result exceeds 12-digit or when the integral part of any addend or subtrahend to memory exceeds 12-digit.
- iii).The integral part of a mark-up and mark-down calculation result exceeds 12-digit.
- v).A division by zero is attempted.
- iv).An extraction of the square root of a negative number is attempted.

b). *Error Indication*

i). System error :

a). "0" is indicated in the first-digit position and "E" in the sign-digit position.

b). The high-order 12-digit of a calculation result is indicated together with "E". The location of the decimal point corresponds to the result of calculation times 10^{-12} , and no zero shift is performed.

c). *Error Release*

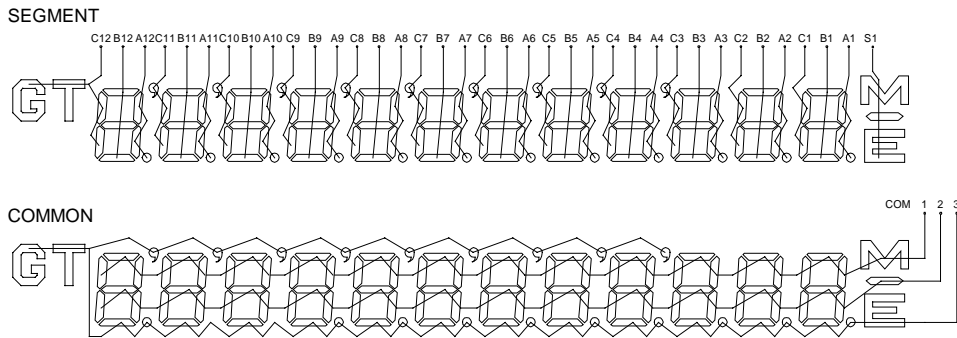
i). System error :

A system error can be released by depressing ON/AC key or CE/C key. However the calculation result is not cleared by CE/C key but is retained.

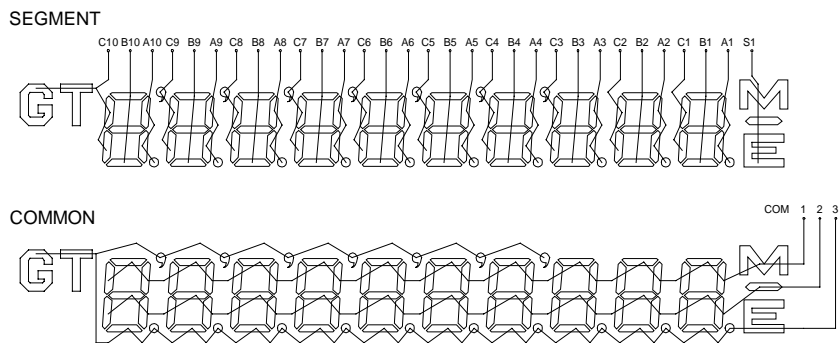
D). LCD Display

a). *Inter Connection of LCD*

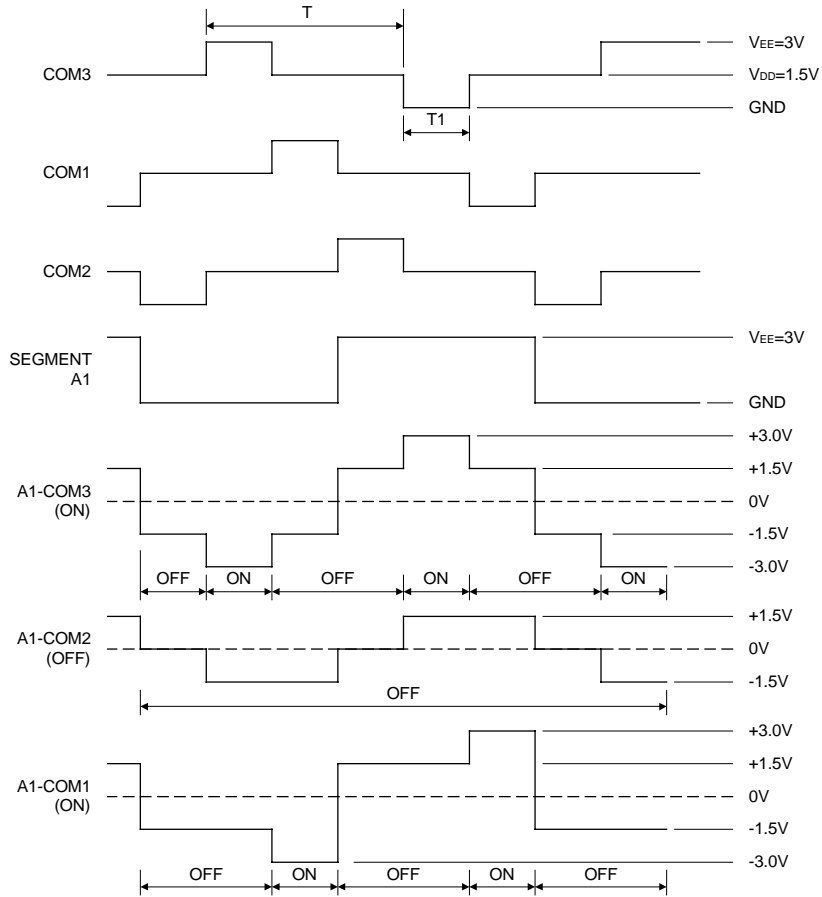
i). Select of 10-digits



ii). Select of 12-digits

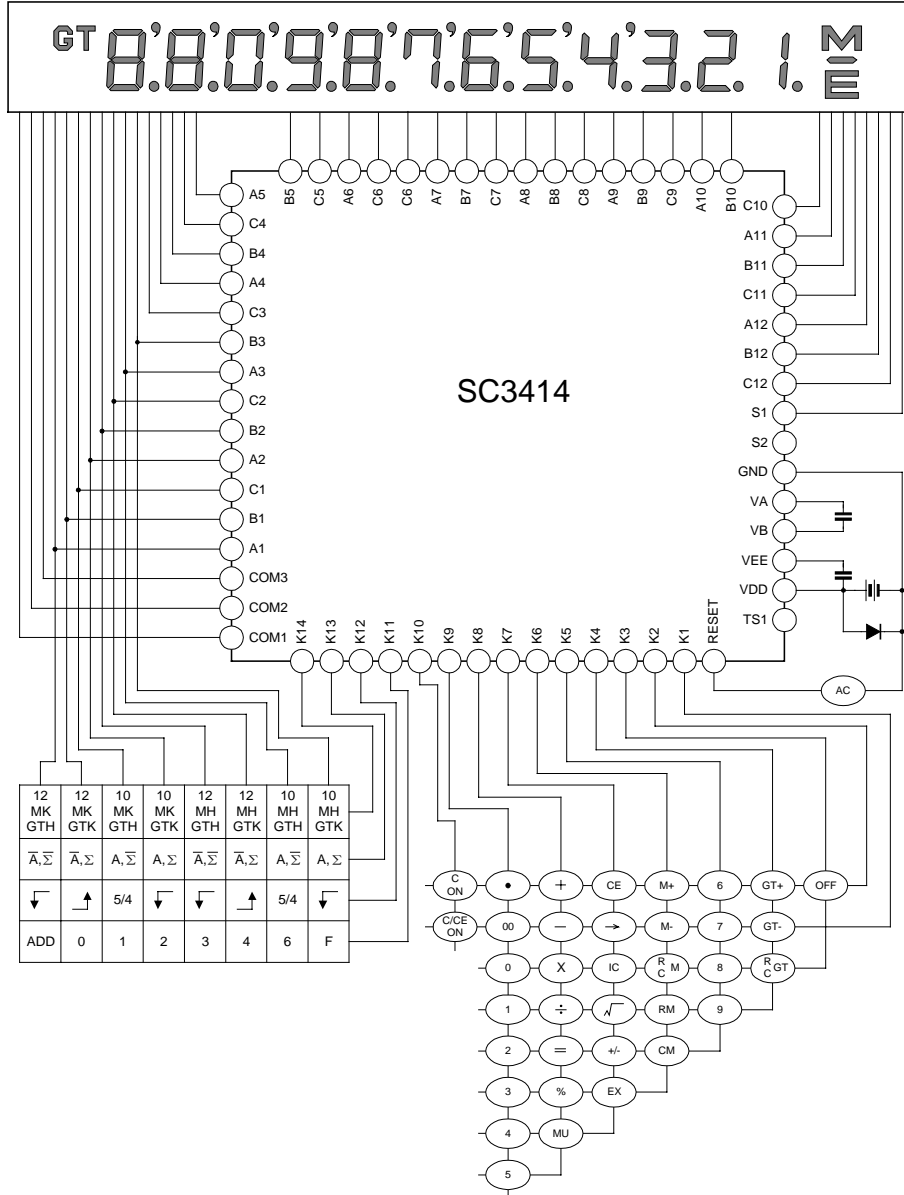


E). Waveforms for Display

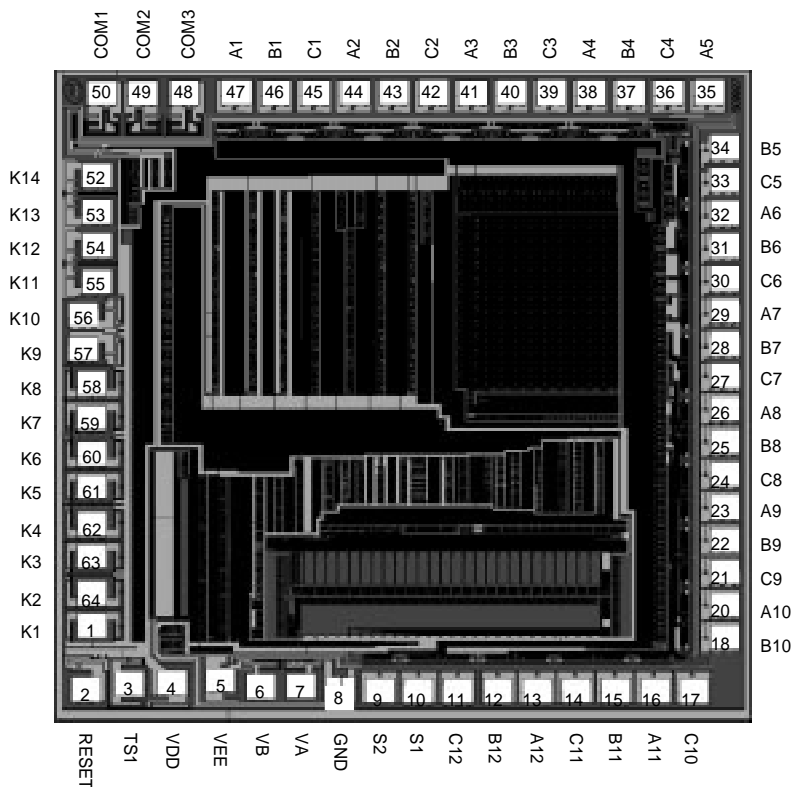


When $f_0=18kHz$
 $T=1/93.8Hz$ $T_1=3.56ms$

APPLICATION CIRCUITS



CHIP TOPOGRAPHY



Chip Size : 2.780 x 2.510 (mm²)

PAD COORDINATES (Unit: μm)

Pin No.	Symbol	X	Y	Pin No.	Symbol	X	Y
1	K1	-1065	-995	33	C5	1100	875
2	RESET	-1085	-1230	34	B5	1100	1010
3	TS1	-940	-1205	35	A5	1050	1240
4	VDD	-790	-1200	36	C4	920	1240
5	VEE	-625	-1200	37	B4	780	1240
6	VB	-490	-1220	38	A4	645	1240
7	VA	-350	-1215	39	C3	510	1240
8	GND	-215	-1230	40	B3	375	1240
9	S2	-80	-1235	41	A3	240	1240
10	S1	55	-1235	42	C2	105	1240
11	C12	190	-1235	43	B2	-30	1240
12	B12	325	-1235	44	A2	-165	1240
13	A12	460	-1235	45	C1	-300	1240
14	C11	595	-1235	46	B1	-435	1240
15	B11	730	-1235	47	A1	-570	1240
16	A11	865	-1235	48	COM3	-750	1240
17	C10	1000	-1235	49	COM2	-890	1240
18	B10	1100	-1015	50	COM1	-1030	1240
20	A10	1100	-880	52	K14	-1050	895
21	C9	1100	-745	53	K13	-1050	745
22	B9	1100	-610	54	K12	-1050	605
23	A9	1100	-475	55	K11	-1050	455
24	C8	1100	-340	56	K10	-1100	320
25	B8	1100	-205	57	K9	-1100	175
26	A8	1100	-70	58	K8	-1065	35
27	C7	1100	65	59	K7	-1065	-110
28	B7	1100	200	60	K6	-1065	-255
29	A7	1100	335	61	K5	-1065	-390
30	C6	1100	470	62	K4	-1065	-545
31	B6	1100	605	63	K3	-1065	-675
32	A6	1100	740	64	K2	-1065	-830

Note: The original point of the coordinate is the die center.