

## 1 M x 4-Bit Dynamic RAM Low Power 1 M x 4-Bit Dynamic RAM

HYB 514400BJ/BJL -50/-60/-70

### Advanced Information

- 1 048 576 words by 4-bit organization
- 0 to 70 °C operating temperature
- Fast Page Mode Operation
- Performance:

		-50	-60	-70	
$t_{RAC}$	$\overline{RAS}$ access time	50	60	70	ns
$t_{CAC}$	$\overline{CAS}$ access time	13	15	20	ns
$t_{AA}$	Access time from address	25	30	35	ns
$t_{RC}$	Read/Write cycle time	95	110	130	ns
$t_{PC}$	Fast page mode cycle time	35	40	45	ns

- Single + 5 V ( $\pm 10\%$ ) supply with a built-in  $V_{BB}$  generator
- Low power dissipation
  - max. 660 mW active (-50 version)
  - max. 605 mW active (-60 version)
  - max. 550 mW active (-70 version)
- Standby power dissipation:
  - 11 mW max.standby (TTL)
  - 5.5 mW max.standby (CMOS)
  - 1.1 mW max.standby (CMOS) for Low Power Version
- Output unlatched at cycle end allows two-dimensional chip selection
- Read, write, read-modify write,  $\overline{CAS}$ -before- $\overline{RAS}$  refresh,  $\overline{RAS}$ -only refresh, hidden refresh and test mode capability
- All inputs and outputs TTL-compatible
- 1024 refresh cycles / 16 ms
- 1024 refresh cycles / 128 ms Low Power Version only
- Plastic Packages: P-SOJ-26/20-5 with 300 mil width

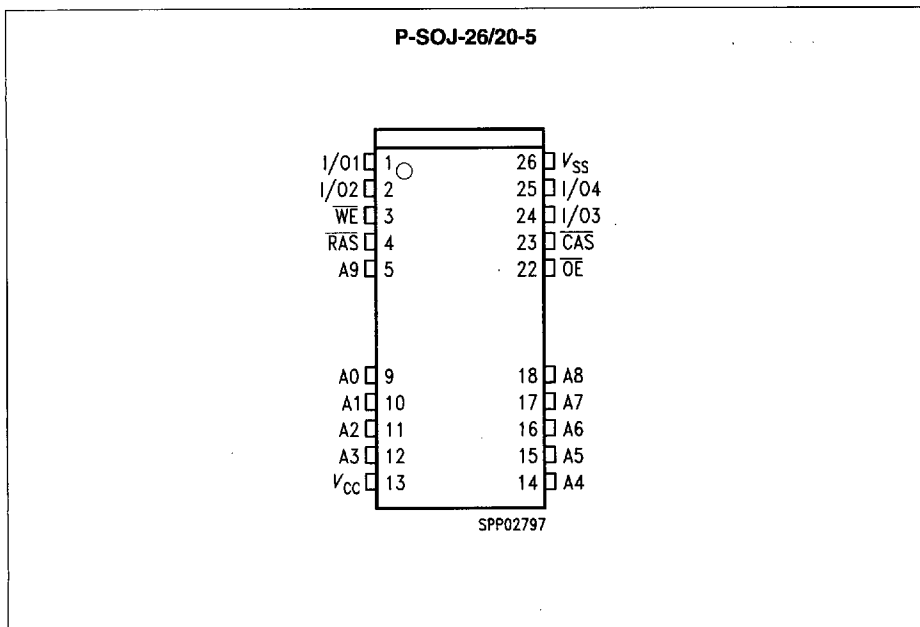
The HYB 514400BJ/BJL is the new generation dynamic RAM organized as 1 048 576 words by 4-bit. The HYB 514400BJ/BJL utilizes CMOS silicon gate process as well as advances circuit techniques to provide wide operation margins, both internally and for the system user. Multiplexed address inputs permit the HYB 514400BJ/BJL to be packed in a standard plastic P-SOJ-26/20 package. This package size provides high system bit densities and is compatible with commonly used automatic testing and insertion equipment. System oriented features include single + 5 V ( $\pm 10\%$ ) power supply, direct interfacing with high performance logic device families such as Schottky TTL.

■ 8235605 0086388 4T9 ■

### Ordering Information

Type	Ordering Code	Package	Descriptions
HYB 514400BJ-50	Q67100-Q973	P-SOJ-26/20-5	DRAM (access time 50 ns)
HYB 514400BJ-60	Q67100-Q756	P-SOJ-26/20-5	DRAM (access time 60 ns)
HYB 514400BJ-70	Q67100-Q757	P-SOJ-26/20-5	DRAM (access time 70 ns)
HYB 514400BJL-50	Q67100-Q2012	P-SOJ-26/20-5	Low Power DRAM (access time 50 ns)
HYB 514400BJL-60	Q67100-Q1030	P-SOJ-26/20-5	Low Power DRAM (access time 60 ns)
HYB 514400BJL-70	Q67100-Q762	P-SOJ-26/20-5	Low Power DRAM (access time 70 ns)

### Pin Configuration (top view)

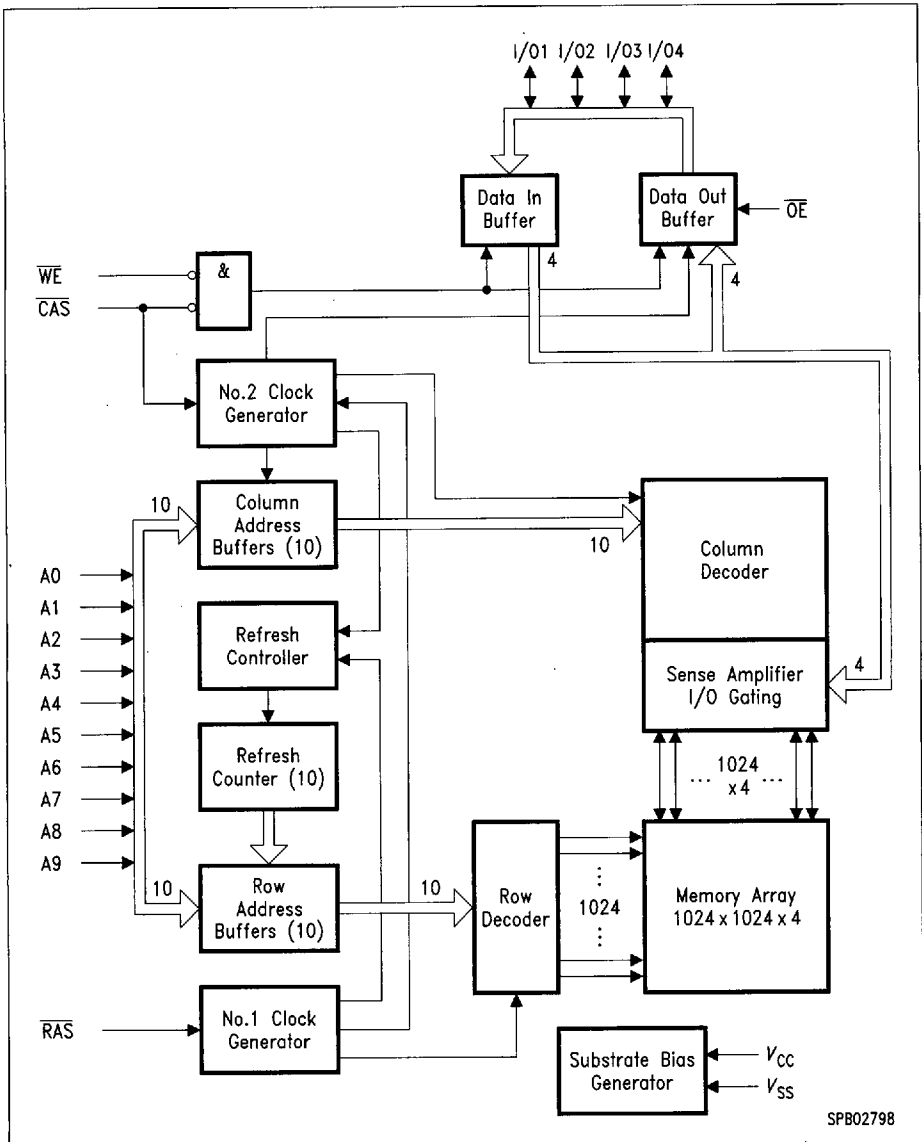


■ 8235605 0086389 335 ■

## Pin Names

A0-A9	Address Input
RAS	Row Address Strobe
CAS	Column Address Strobe
WE	Read/Write Input
OE	Output Enable
I/O1 - I/O4	Data Input/Output
V <sub>cc</sub>	Power Supply (+ 5 V)
V <sub>ss</sub>	Ground (0 V)
N.C.	No Connection

■ 8235605 0086390 057 ■



**Block Diagram**

■ 8235605 0086391 T93 ■

### Absolute Maximum Ratings

Operating temperature range .....	0 to 70 °C
Storage temperature range .....	- 55 to + 150 °C
Input/output voltage .....	- 1 to + 7 V
Power Supply voltage .....	- 1 to + 7 V
Data out current (short circuit) .....	50 mA

**Note:** Stresses above those listed under "Absolute Maximum Ratings" may cause permanent damage of the device. Exposure to absolute maximum rating conditions for extended periods may affect device reliability

### DC Characteristics

$T_A = 0$  to 70 °C,  $V_{SS} = 0$  V,  $V_{CC} = 5$  V  $\pm$  10 %,  $t_T = 5$  ns

Parameter	Symbol	Limit Values		Unit	Test Condition
		min.	max.		
Input high voltage	$V_{IH}$	2.4	$V_{CC} + 0.5$	V	1)
Input low voltage	$V_{IL}$	- 1.0	0.8	V	1)
Output high voltage ( $I_{OUT} = - 5$ mA)	$V_{OH}$	2.4	-	V	1)
Output low voltage ( $I_{OUT} = 4.2$ mA)	$V_{OL}$	-	0.4	V	1)
Input leakage current, any input ( $0$ V < $V_{in}$ < 7, all other input = 0 V)	$I_{I(L)}$	- 10	10	$\mu$ A	1)
Output leakage current (DO is disabled, $0 < V_{OUT} < V_{CC}$ )	$I_{O(L)}$	- 10	10	$\mu$ A	1)
Average $V_{CC}$ supply current	$I_{CC1}$			mA	2)3)4)
		-50 version	120		
		-60 version	110		
		-70 version	100		
Standby $V_{CC}$ supply current ( $RAS = CAS = WE = V_{in}$ )	$I_{CC2}$	-	2	mA	-
Average $V_{CC}$ supply current during RAS-only refresh cycles	$I_{CC3}$			mA	2)4)
		-50 version	120		
		-60 version	110		
		-70 version	100		
Average $V_{CC}$ supply current during fast page mode operation	$I_{CC4}$			mA	2)3)4)
		-50 version	80		
		-60 version	70		
		-70 version	60		
Standby $V_{CC}$ supply current ( $RAS = CAS = WE = V_{CC} - 0.2$ V)	$I_{CC5}$	-	1	mA	1)
Standby $V_{CC}$ supply current ( $RAS = CAS = WE = V_{CC} - 0.2$ V) for Low Power Version	$I_{CC5}$	-	200	$\mu$ A	-

#### DC Characteristics (cont'd)

$T_A = 0$  to  $70$  °C,  $V_{SS} = 0$  V,  $V_{CC} = 5$  V  $\pm$  10 %,  $t_T = 5$  ns

Parameter	Symbol	Limit Values		Unit	Test Condition
		min.	max.		
Average $V_{CC}$ supply current during CAS before RAS refresh mode	$I_{CC6}$			mA	2)4)
-50 version		–	120		
-60 version		–	110		
-70 version		–	100		
For Low Power Version only: Battery backup current (average power supply current in battery backup mode): ( $\overline{CAS} = \overline{CAS}$ before $\overline{RAS}$ cycling or 0.2 V, $\overline{WE} = V_{CC} - 0.2$ V or 0.2 V, $A0$ to $A10 = V_{CC} - 0.2$ V or 0.2 V; $DI = V_{CC} - 0.2$ V or 0.2 V or open, $t_{RC} = 125$ $\mu$ S, $t_{RAS} = t_{RAS}$ min = 1 $\mu$ S)	$I_{CC7}$	–	250	$\mu$ A	–

#### AC Characteristics <sup>5)6)</sup>

$T_A = 0$  to  $70$  °C,  $V_{CC} = 5$  V  $\pm$  10 %,  $t_T = 5$  ns

Parameter	Symbol	Limit Values						Unit	Note
		-50		-60		-70			
		min.	max.	min.	max.	min.	max.		

#### Common Parameters

Random read or write cycle time	$t_{RC}$	95	–	110	–	130	–	ns	
$\overline{RAS}$ precharge time	$t_{RP}$	35	–	40	–	50	–	ns	
$\overline{RAS}$ pulse width	$t_{RAS}$	50	10k	60	10k	70	10k	ns	
$\overline{CAS}$ pulse width	$t_{CAS}$	13	10k	15	10k	20	10k	ns	
Row address setup time	$t_{ASR}$	0	–	0	–	0	–	ns	
Row address hold time	$t_{RAH}$	8	–	10	–	10	–	ns	
Column address setup time	$t_{ASC}$	0	–	0	–	0	–	ns	
Column address hold time	$t_{CAH}$	10	–	15	–	15	–	ns	
$\overline{RAS}$ to $\overline{CAS}$ delay time	$t_{RCD}$	18	37	20	45	20	50		
$\overline{RAS}$ to column addr. delay time	$t_{RAD}$	13	25	15	30	15	35	ns	
$\overline{RAS}$ hold time	$t_{RSH}$	13		15	–	20	–	ns	
$\overline{CAS}$ hold time	$t_{CSH}$	50		60	–	70	–	ns	
CAS to $\overline{RAS}$ precharge time	$t_{CRP}$	5	–	5	–	5	–	ns	

#### AC Characteristics (cont'd) <sup>5/6)</sup>

$T_A = 0$  to  $70$  °C,  $V_{CC} = 5$  V  $\pm$  10 %,  $t_T = 5$  ns

Parameter	Symbol	Limit Values						Unit	Note
		-50		-60		-70			
		min.	max.	min.	max.	min.	max.		
Transition time (rise and fall)	$t_T$	3	50	3	50	3	50	ns	7
Refresh period	$t_{REF}$	—	16	—	16	—	16	ms	
Refresh period for L-version	$t_{REF}$	—	128	—	128	—	128	ms	

#### Read Cycle<sup>7</sup>

Access time from $\overline{RAS}$	$t_{RAC}$	—	50	—	60	—	70	ns	8, 9
Access time from $\overline{CAS}$	$t_{CAC}$	—	13	—	15	—	20	ns	8, 9
Access time from column address	$t_{AA}$	—	25	—	30	—	35	ns	8,10
$\overline{OE}$ access time	$t_{OEA}$	—	13	—	15	—	20	ns	
Column address to $\overline{RAS}$ lead time	$t_{RAL}$	25	—	30	—	35	—	ns	
Read command setup time	$t_{RCS}$	0	—	0	—	0	—	ns	
Read command hold time	$t_{RCH}$	0	—	0	—	0	—	ns	11
Read command hold time referenced to $\overline{RAS}$	$t_{RRH}$	0	—	0	—	0	—	ns	11
$\overline{CAS}$ to output in low-Z	$t_{CLZ}$	0	—	0	—	0	—	ns	8
Output buffer turn-off delay	$t_{OFF}$	0	13	0	15	0	20	ns	12
Output buffer turn-off delay from $\overline{OE}$	$t_{OEZ}$	0	13	0	15	0	20	ns	12
Data to $\overline{CAS}$ low delay	$t_{DZC}$	0	—	0	—	0	—	ns	13
Data to $\overline{OE}$ low delay	$t_{DZO}$	0	—	0	—	0	—	ns	13
$\overline{CAS}$ high to data delay	$t_{CDD}$	13	—	15	—	20	—	ns	14
$\overline{OE}$ high to data delay	$t_{ODD}$	13	—	15	—	20	—	ns	14

#### Write Cycle

Write command hold time	$t_{WCH}$	8	—	10	—	10	—	ns	
Write command pulse width	$t_{WP}$	8	—	10	—	10	—	ns	
Write command setup time	$t_{WCS}$	0	—	0	—	0	—	ns	15
Write command to $\overline{RAS}$ lead time	$t_{RWL}$	13	—	15	—	20	—	ns	

■ 8235605 0086394 7T2 ■

### AC Characteristics (cont'd) <sup>5)6)</sup>

$T_A = 0$  to  $70$  °C,  $V_{CC} = 5 V \pm 10 \%$ ,  $t_T = 5$  ns

Parameter	Symbol	Limit Values						Unit	Note
		-50		-60		-70			
		min.	max.	min.	max.	min.	max.		
Write command to $\overline{CAS}$ lead time	$t_{CWL}$	13	–	15	–	20	–	ns	
Data setup time	$t_{DS}$	0	–	0	–	0	–	ns	16
Data hold time	$t_{DH}$	10	–	10	–	15	–	ns	16

### Read-Modify-Write Cycle

Read-write cycle time	$t_{RWC}$	131	–	150	–	180	–	ns	
$\overline{RAS}$ to $\overline{WE}$ delay time	$t_{RWD}$	68	–	80	–	95	–	ns	15
$\overline{CAS}$ to $\overline{WE}$ delay time	$t_{CWD}$	31	–	35	–	45	–	ns	15
Column address to $\overline{WE}$ delay time	$t_{AWD}$	43	–	50	–	60	–	ns	15
$\overline{OE}$ command hold time	$t_{OEH}$	13	–	15	–	20	–	ns	

### Fast Page Mode Cycle

Fast page mode cycle time	$t_{FC}$	35	–	40	–	45	–	ns	
$\overline{CAS}$ precharge time	$t_{CP}$	10	–	10	–	10	–	ns	
Access time from $\overline{CAS}$ precharge	$t_{CPA}$	–	30	–	35	–	40	ns	7
$\overline{RAS}$ pulse width	$t_{RAS}$	50	200k	60	200k	70	200k	ns	
$\overline{CAS}$ precharge to $\overline{RAS}$ Delay	$t_{RHCP}$	30	–	35	–	40	–	ns	

### Fast Page Mode Read-Modify-Write Cycle

Fast page mode read-write cycle time	$t_{PRWC}$	71	–	80	–	95	–	ns	
$\overline{CAS}$ precharge to $\overline{WE}$	$t_{CPWD}$	48	–	55	–	65	–	ns	

### $\overline{CAS}$ -before- $\overline{RAS}$ Refresh Cycle

$\overline{CAS}$ setup time	$t_{CSR}$	10	–	10	–	10	–	ns	
$\overline{CAS}$ hold time	$t_{CHR}$	10	–	10	–	10	–	ns	
$\overline{RAS}$ to $\overline{CAS}$ precharge time	$t_{RPC}$	5	–	5	–	5	–	ns	
Write to $\overline{RAS}$ precharge time	$t_{WRP}$	10	–	10	–	10	–	ns	



### AC Characteristics (cont'd) <sup>5/6)</sup>

$T_A = 0$  to  $70$  °C,  $V_{CC} = 5$  V  $\pm$  10 %,  $t_T = 5$  ns

Parameter	Symbol	Limit Values						Unit	Note
		-50		-60		-70			
		min.	max.	min.	max.	min.	max.		
Write hold time referenced to $\overline{\text{RAS}}$	$t_{\text{WRH}}$	10	–	10	–	10	–	ns	

### CAS-before-RAS Counter Test Cycle

CAS precharge time	$t_{\text{CPT}}$	35	–	40	–	40	–	ns	
--------------------	------------------	----	---	----	---	----	---	----	--

### Test Mode

Write command setup time	$t_{\text{WTS}}$	10	–	10	–	10	–	ns	
Write command hold time	$t_{\text{WTH}}$	10	–	10	–	10	–	ns	

### Capacitance

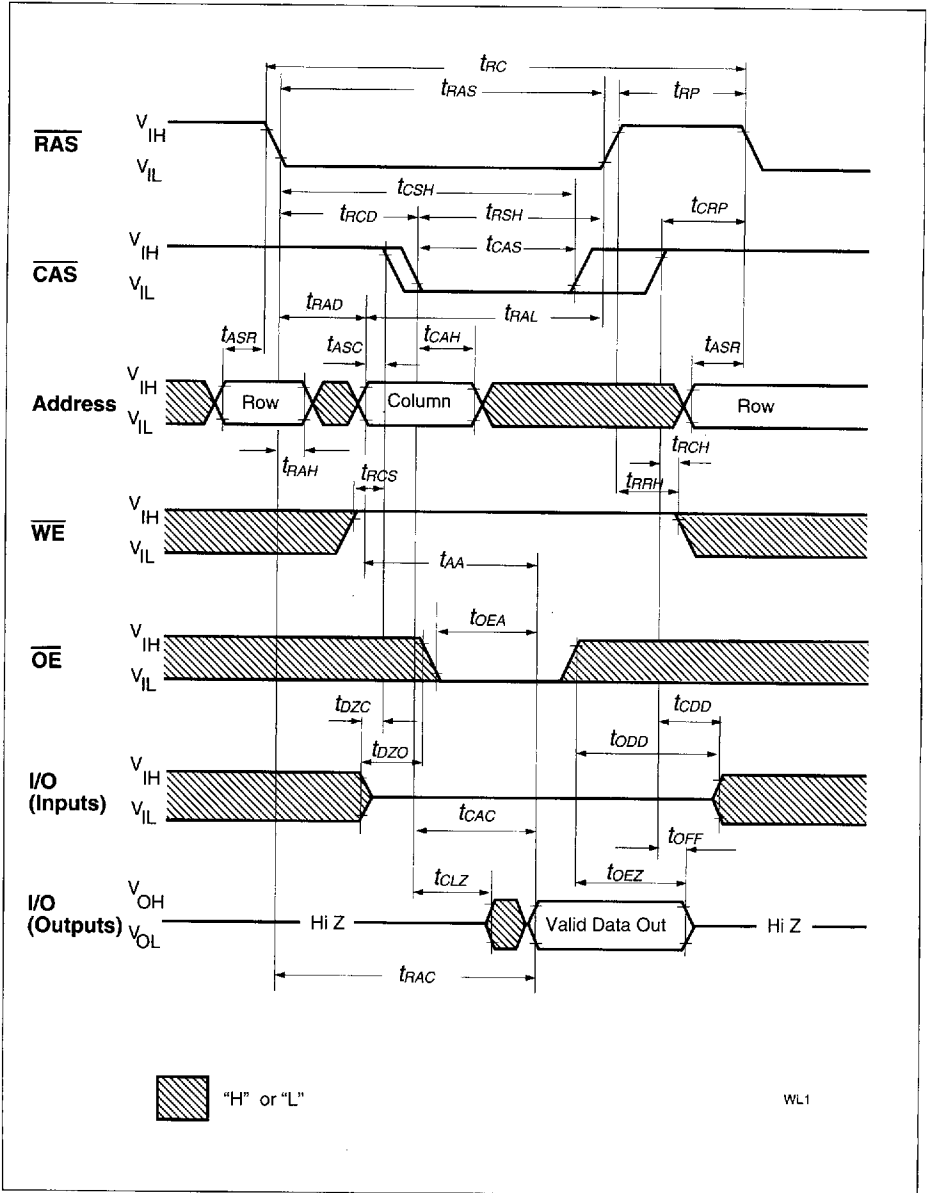
$T_A = 0$  to  $70$  °C;  $V_{CC} = 5$  V  $\pm$  10 %;  $f = 1$  MHz

Parameter	Symbol	Limit Values		Unit
		min.	max.	
Input capacitance (A0 to A9)	$C_{i1}$	–	5	pF
Input capacitance ( $\overline{\text{RAS}}$ , $\overline{\text{CAS}}$ , $\overline{\text{WE}}$ , $\overline{\text{OE}}$ )	$C_{i2}$	–	7	pF
Output capacitance (IO1 to IO4)	$C_{i0}$	–	7	pF

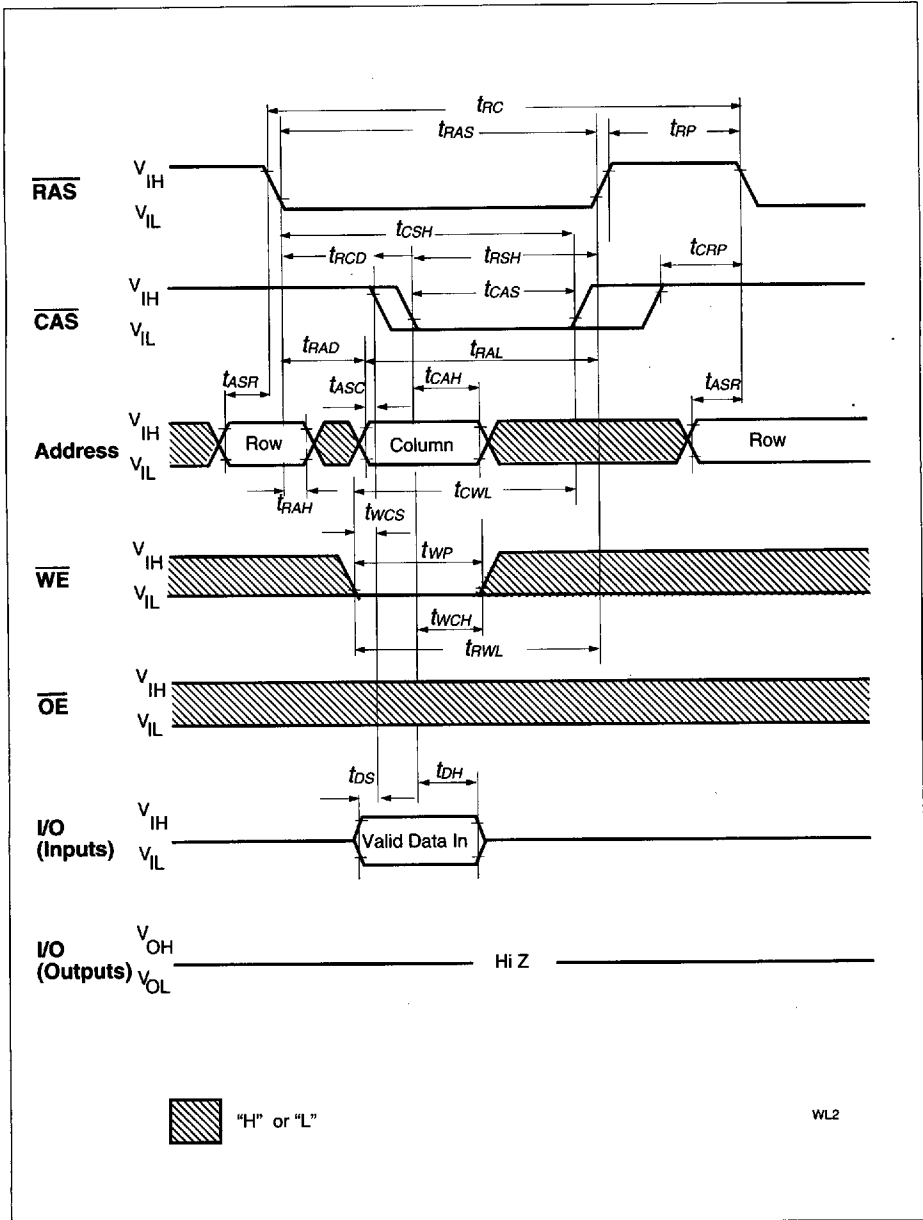
## Notes:

- 1) All voltages are referenced to  $V_{SS}$ .
- 2)  $I_{CC1}$ ,  $I_{CC3}$ ,  $I_{CC4}$  and  $I_{CC6}$  depend on cycle rate.
- 3)  $I_{CC1}$  and  $I_{CC4}$  depend on output loading. Specified values are measured with the output open.
- 4) Address can be changed once or less while  $\overline{RAS} = V_{IL}$ . In the case of  $I_{CC4}$  it can be changed once or less during a fast page mode cycle ( $t_{PC}$ ).
- 5) An initial pause of 200  $\mu s$  is required after power-up followed by 8  $\overline{RAS}$  cycles of which at least one cycle has to be a refresh cycle, before proper device operation is achieved. In case of using internal refresh counter, a minimum of 8  $\overline{CAS}$ -before- $\overline{RAS}$  initialization cycles instead of 8  $\overline{RAS}$  cycles are required.
- 6) AC measurements assume  $t_T = 5$  ns.
- 7)  $V_{IH (min)}$  and  $V_{IL (max)}$  are reference levels for measuring timing of input signals. Transition times are also measured between  $V_{IH}$  and  $V_{IL}$ .
- 8) Measured with a load equivalent to 2 TTL loads and 100 pF.
- 9) Operation within the  $t_{RCD (max)}$  limit ensures that  $t_{RAC (max)}$  can be met.  $t_{RCD (max)}$  is specified as a reference point only: If  $t_{RCD}$  is greater than the specified  $t_{RCD (max)}$  limit, then access time is controlled by  $t_{CAC}$ .
- 10) Operation within the  $t_{RAD (max)}$  limit ensures that  $t_{RAC (max)}$  can be met.  $t_{RAD (max)}$  is specified as a reference point only: If  $t_{RAD}$  is greater than the specified  $t_{RAD (max)}$  limit, then access time is controlled by  $t_{AA}$ .
- 11) Either  $t_{RCH}$  or  $t_{RRH}$  must be satisfied for a read cycle.
- 12)  $t_{OFF (max)}$  and  $t_{OEZ (max)}$  define the time at which the outputs achieve the open-circuit condition and are not referenced to output voltage levels.
- 13) Either  $t_{DZC}$  or  $t_{DZO}$  must be satisfied.
- 14) Either  $t_{CDD}$  or  $t_{ODD}$  must be satisfied.
- 15)  $t_{WCS}$ ,  $t_{RWD}$ ,  $t_{CWD}$ ,  $t_{AWD}$  and  $t_{CPWD}$  are not restrictive operating parameters. They are included in the data sheet as electrical characteristics only. If  $t_{WCS} > t_{WCS (min)}$ , the cycle is an early write cycle and the I/O pin will remain open-circuit (high impedance) through the entire cycle; if  $t_{RWD} > t_{RWD (min)}$ ,  $t_{CWD} > t_{CWD (min)}$ ,  $t_{AWD} > t_{AWD (min)}$  and  $t_{CPWD} > t_{CPWD (min)}$ , the cycle is a read-write cycle and I/O pins will contain data read from the selected cells. If neither of the above sets of conditions is satisfied, the condition of the I/O pins (at access time) is indeterminate.
- 16) These parameters are referenced to the  $\overline{CAS}$  leading edge in early write cycles and to the  $\overline{WE}$  leading edge in read-write cycles.

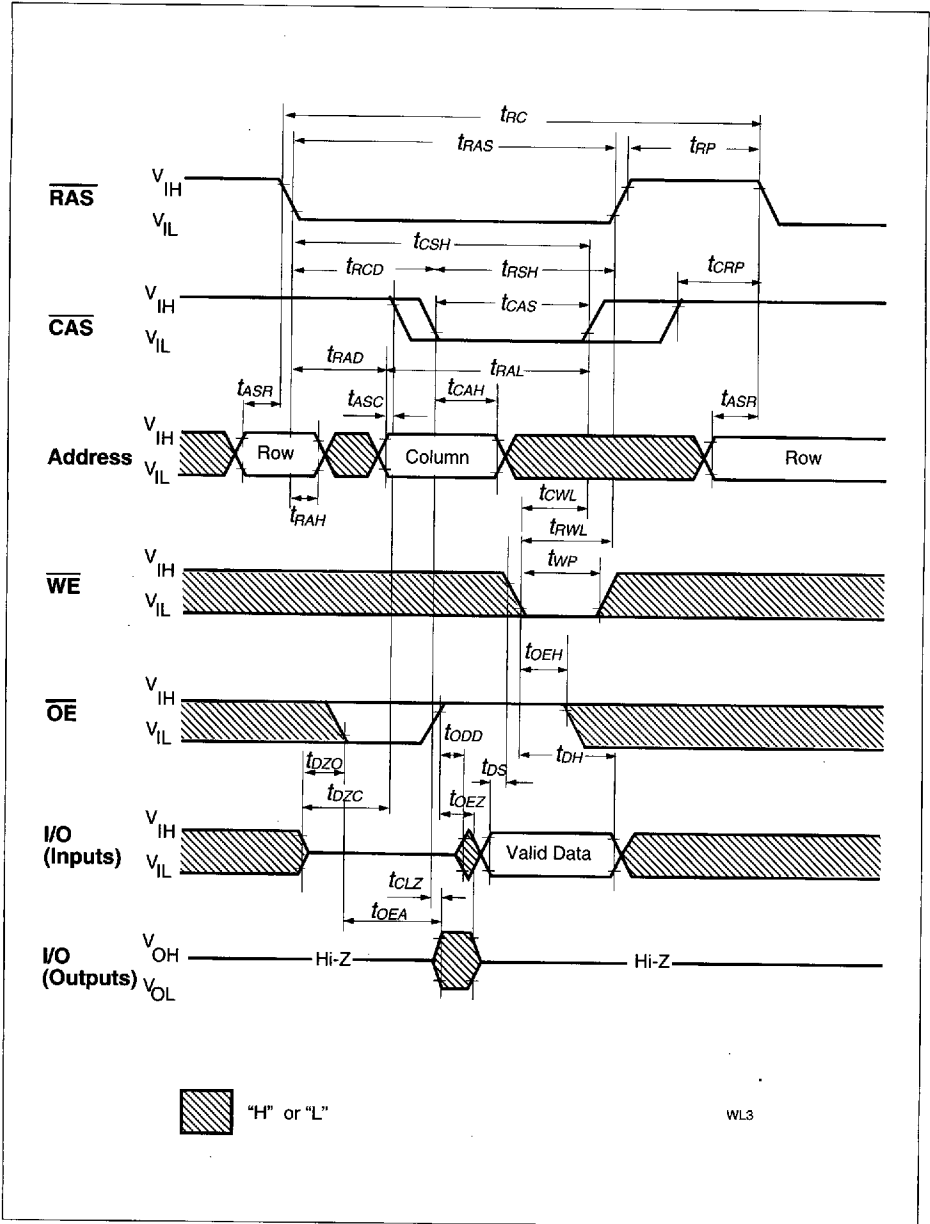
■ 8235605 0086397 401 ■



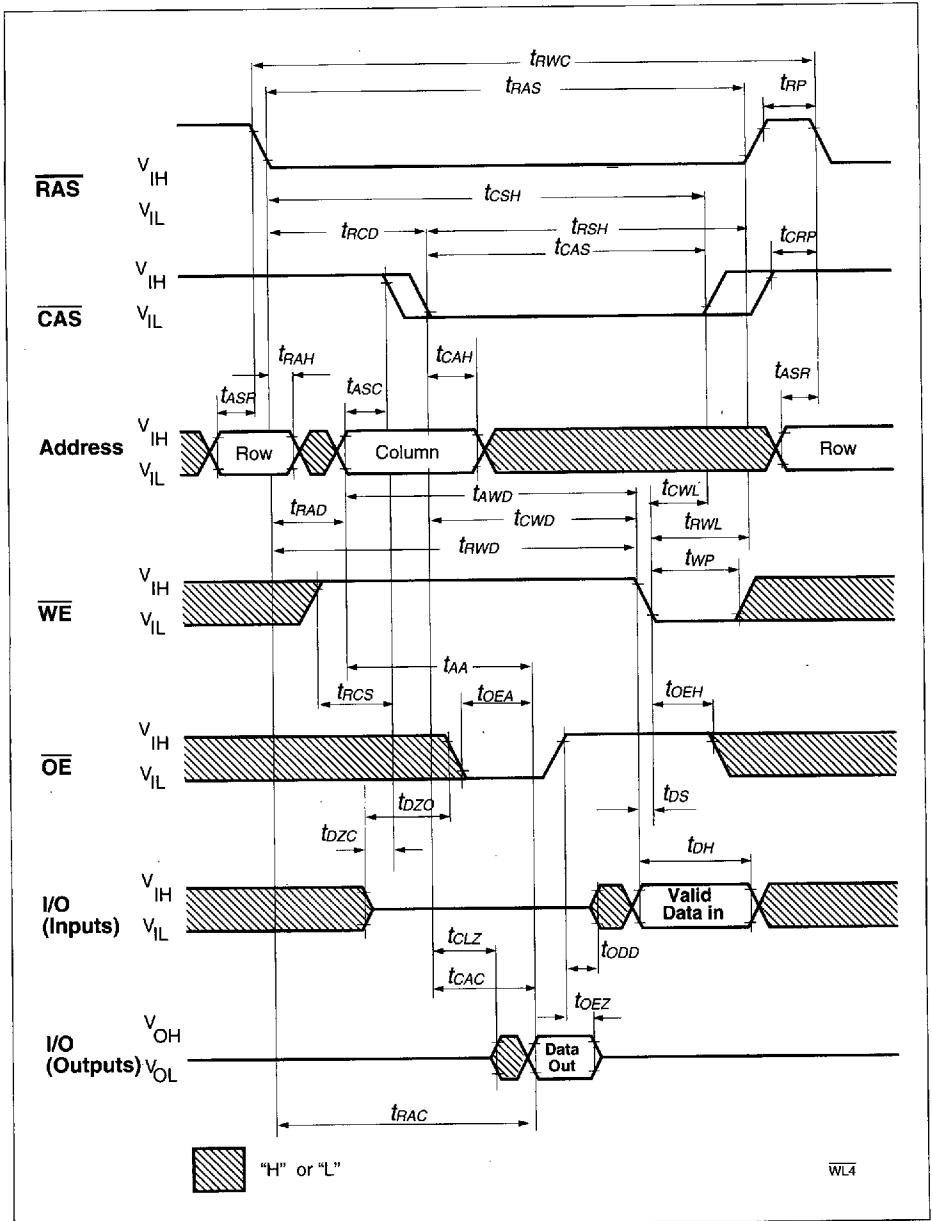
Read Cycle



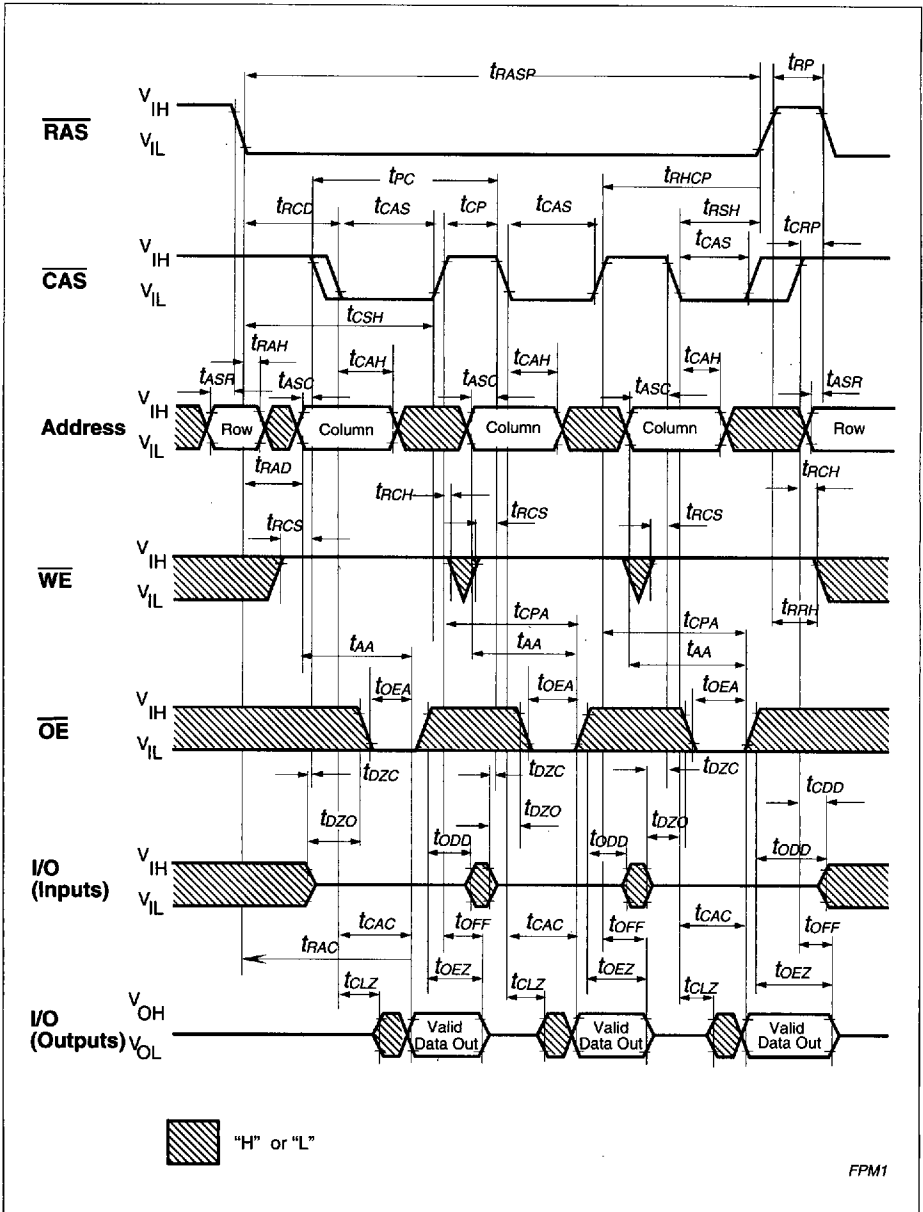
Write Cycle (Early Write)



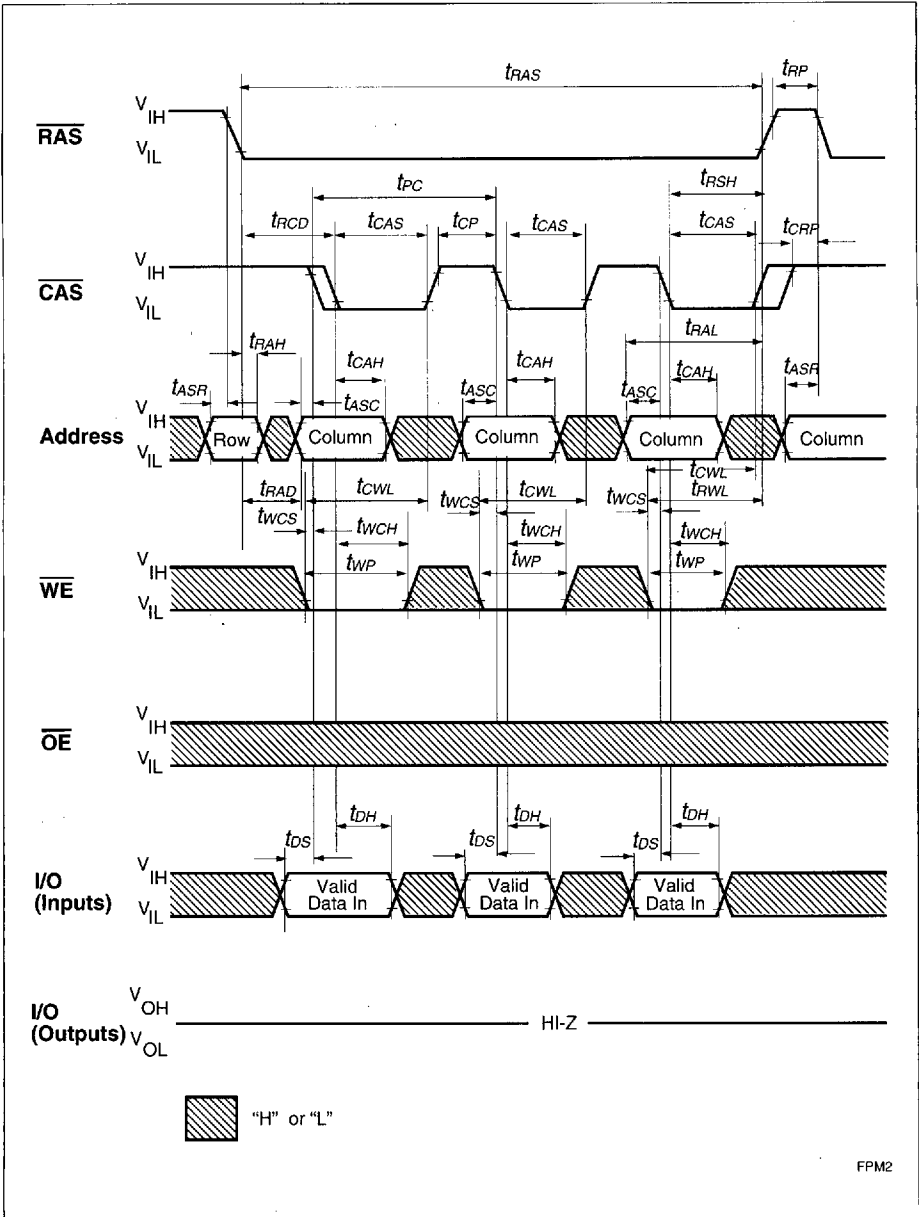
Write Cycle ( $\overline{OE}$  Controlled Write)



Read-Write (Read-Modify-Write) Cycle

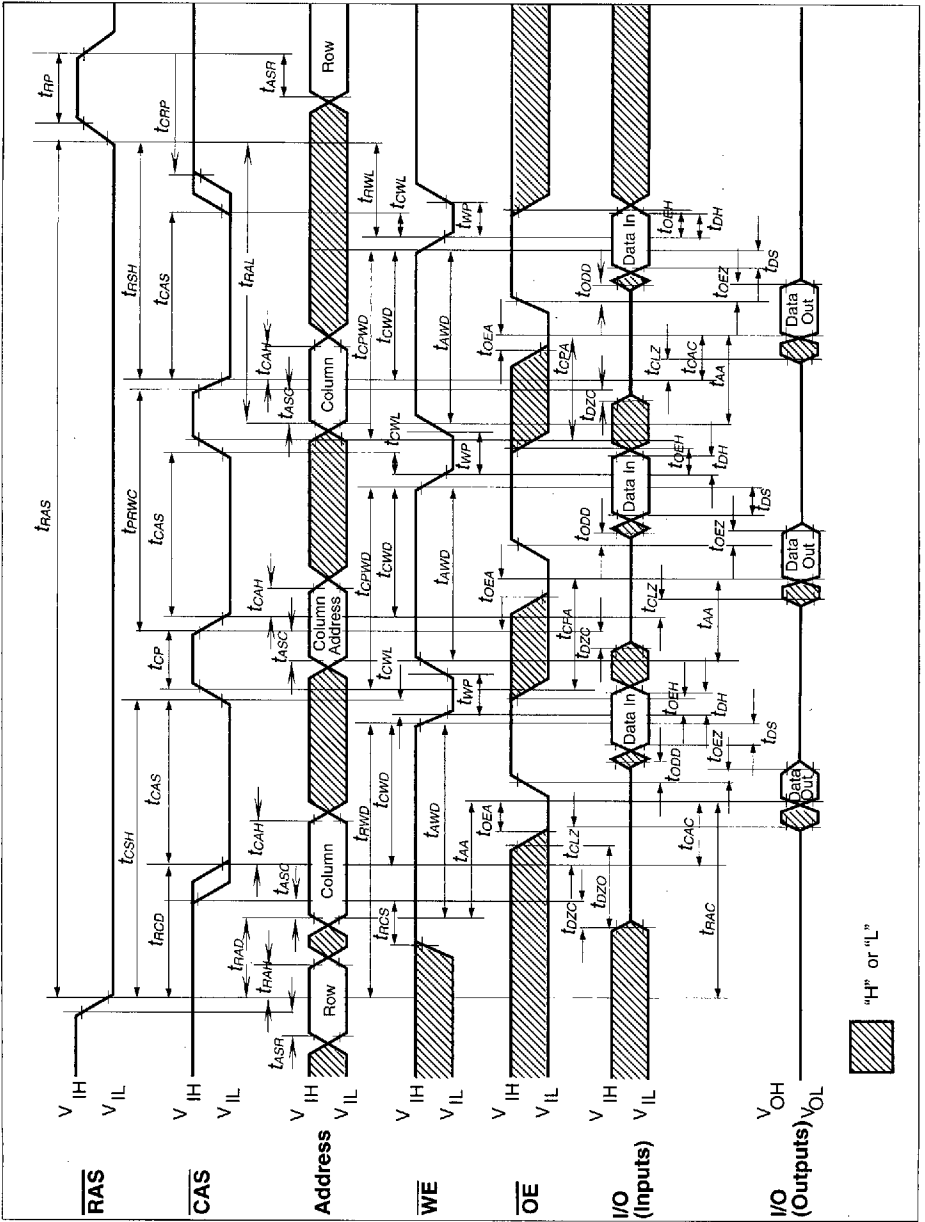


### Fast Page Mode Read Cycle

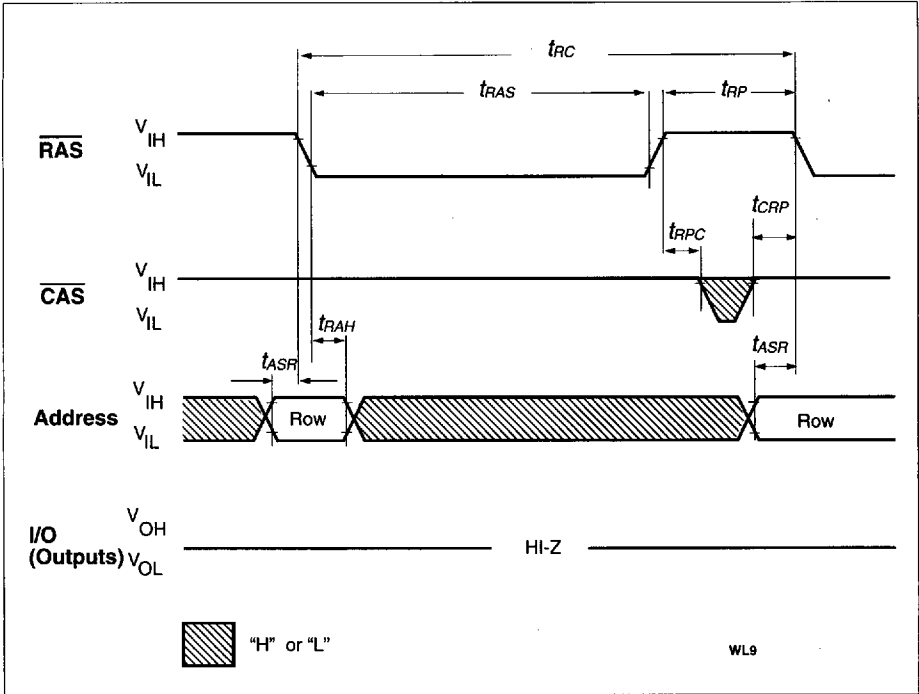


Fast Page Mode Early Write Cycle

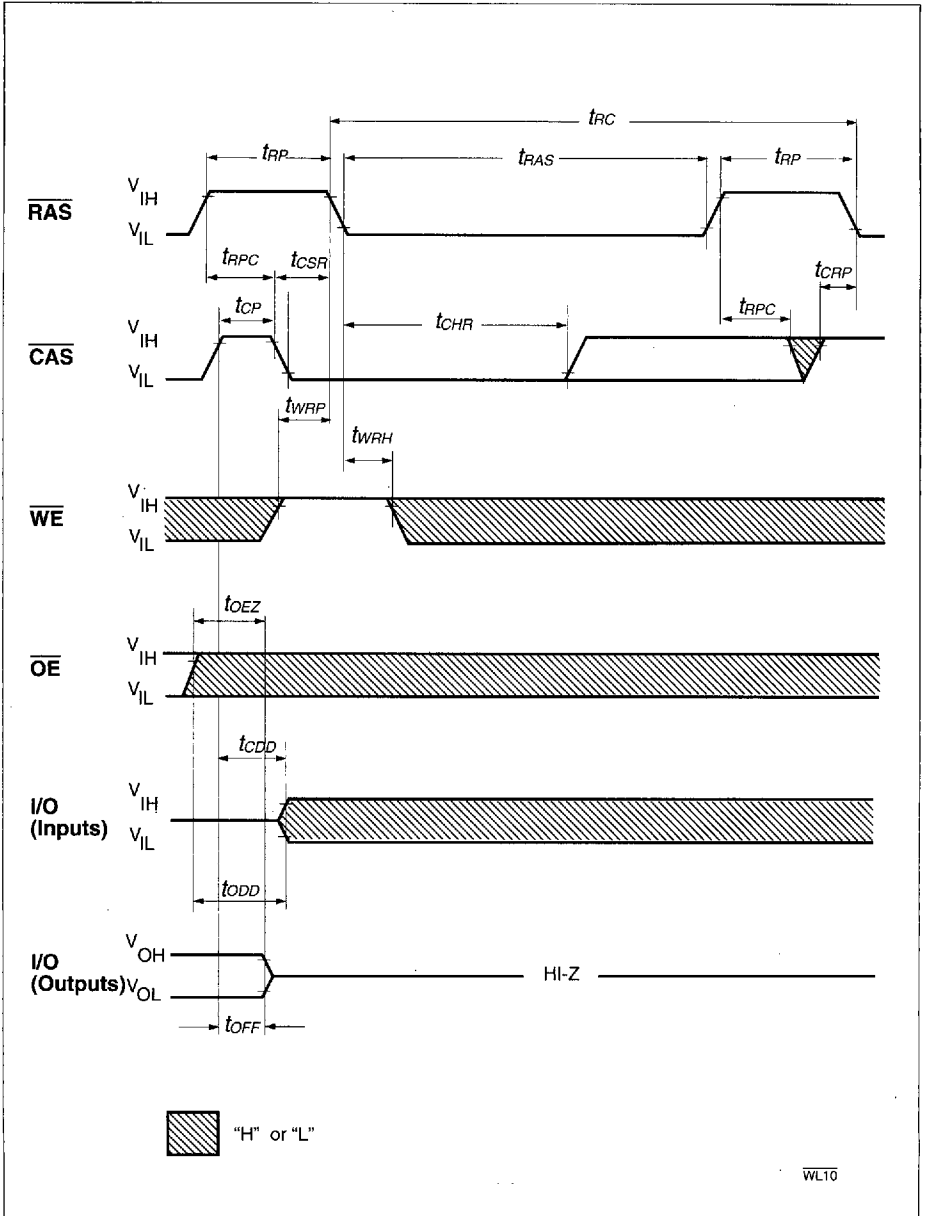




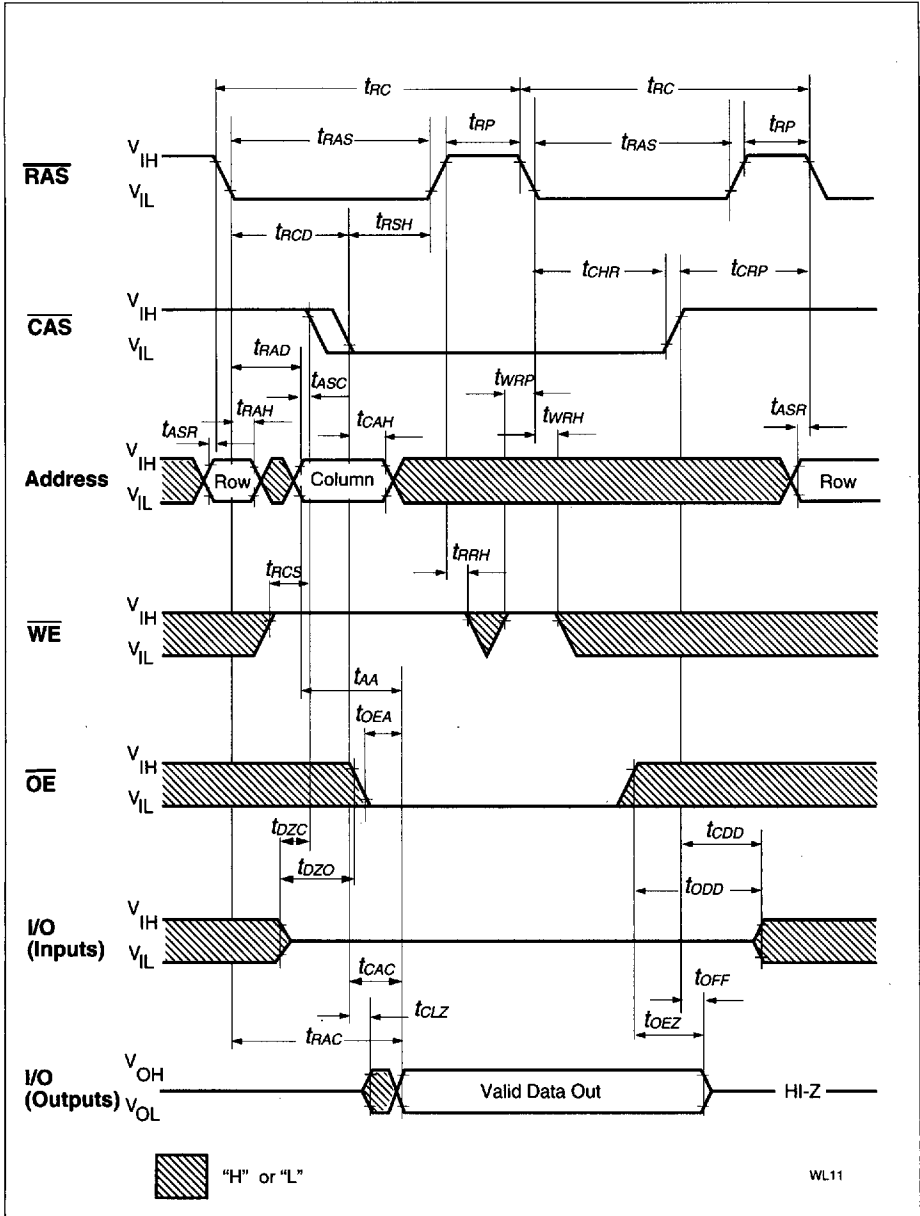
Fast Page Mode Read-Modify-Write Cycle



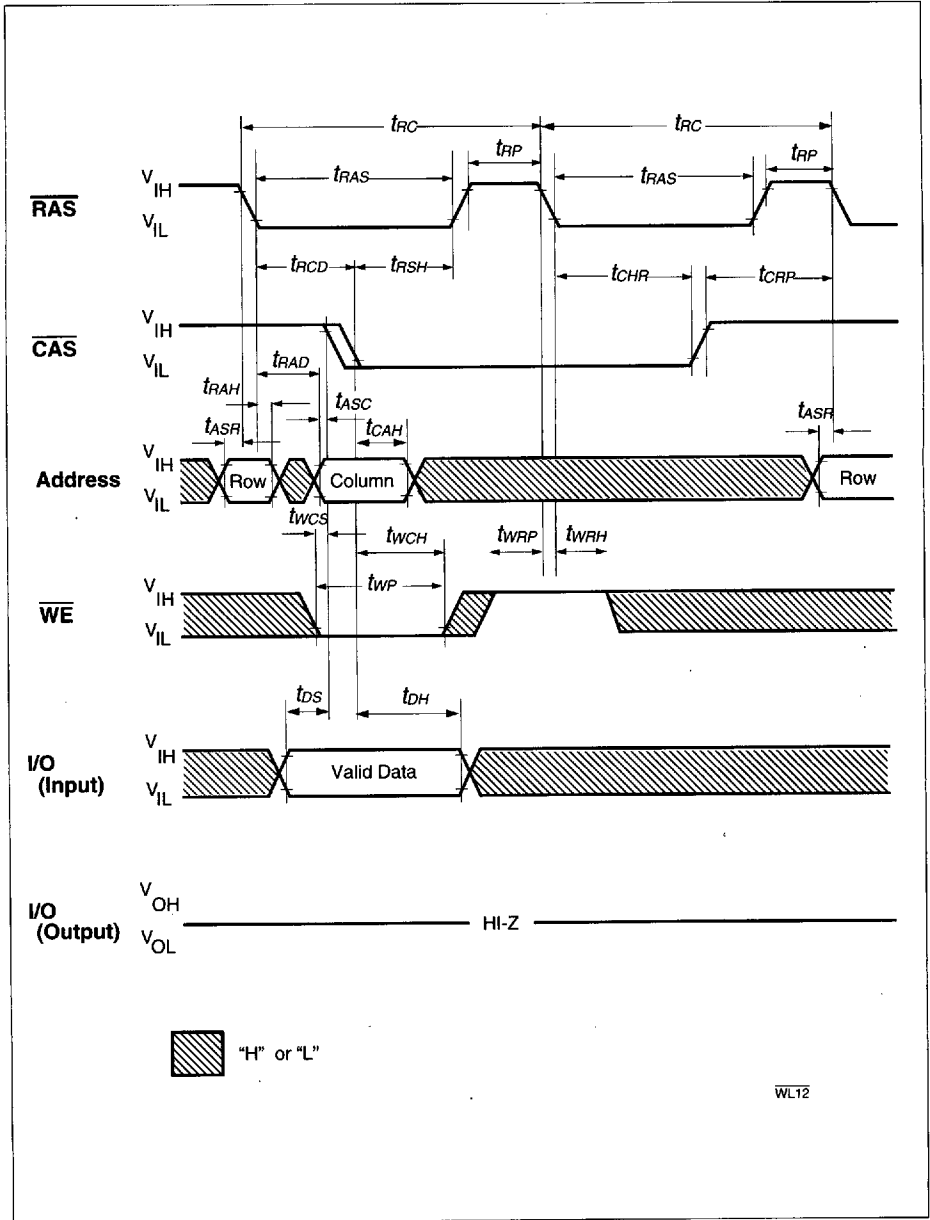
**RAS-Only Refresh Cycle**



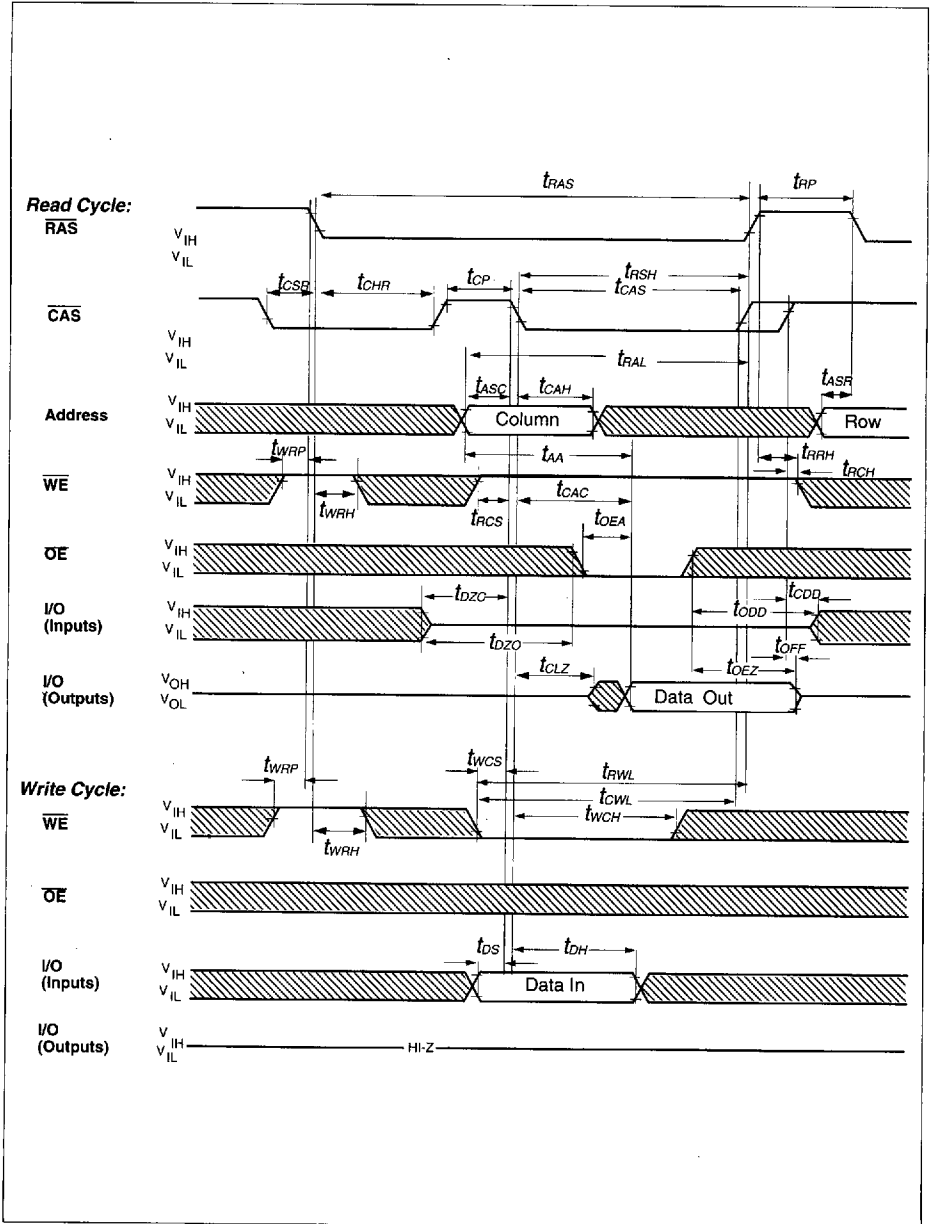
CAS-Before-RAS Refresh Cycle



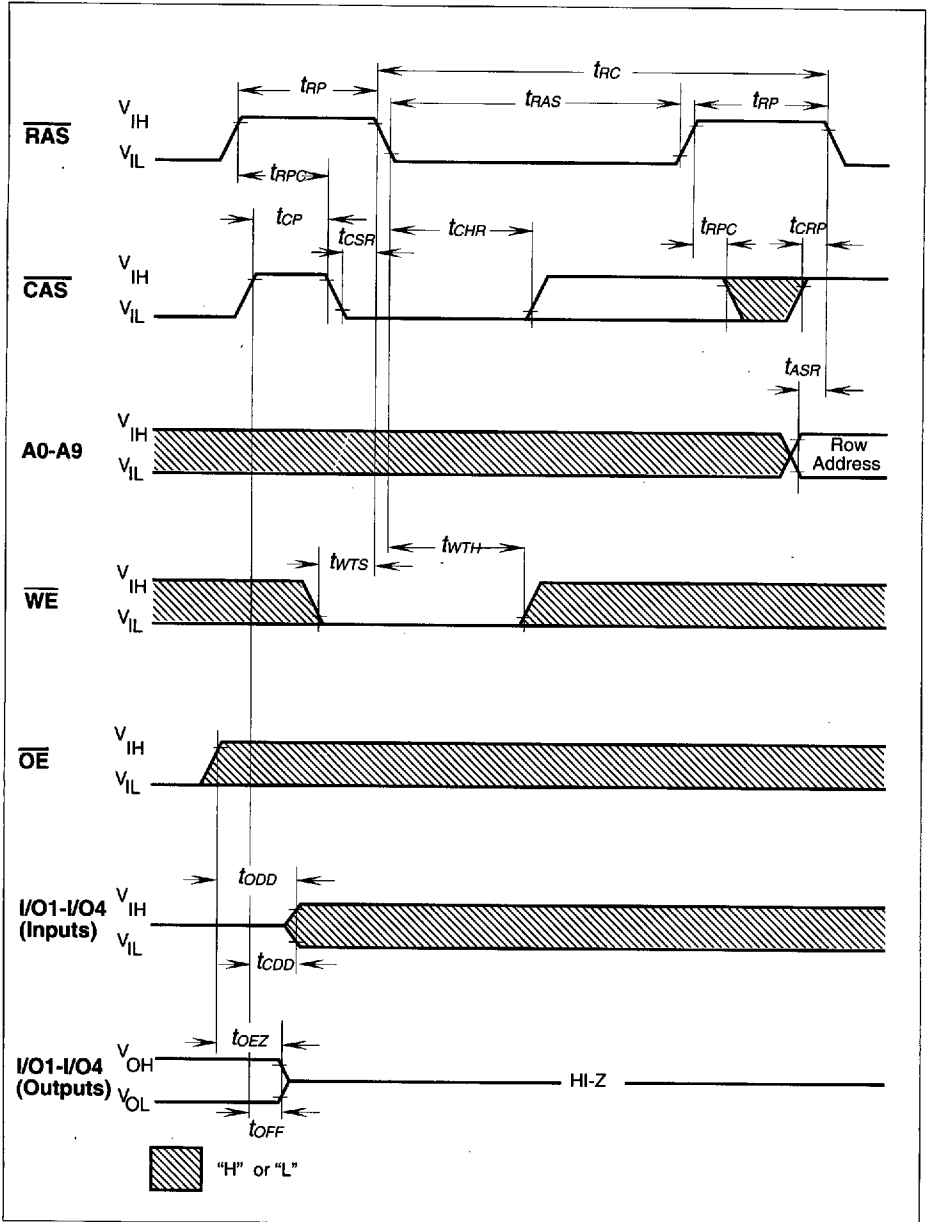
Hidden Refresh Cycle (Read)



Hidden Refresh Cycle (Early Write)



CAS-Before-RAS Refresh Counter Test Cycle



Test Mode Entry

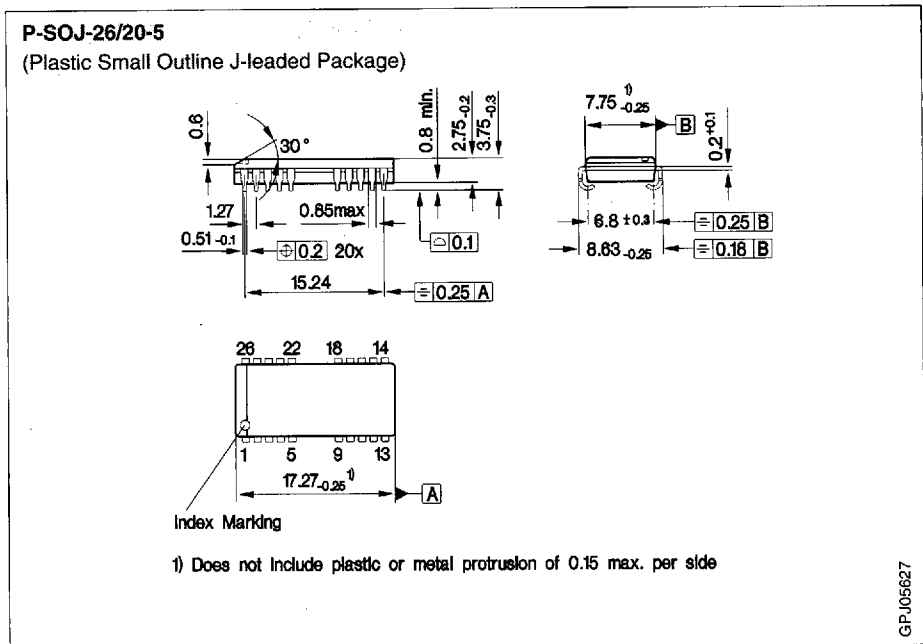
### Test Mode

As the HYB 514400BJ/BJL/BT/BTL is organized internally as 512K x 8-bits, a test mode cycle using 8:1 compression can be used to improve test time. Note that in the 1M x 4 version the test time is reduced by 1/2 for a linear test pattern.

In a test mode "write" the data from each I/O1 pin is written into eight bits simultaneously (all "1" s or all "0" s). The I/O2-I/O4 inputs are not used for writing in test mode. In test mode "read" each I/O output is used for indicating the test mode result. If the internal eight bits are equal, the I/O would indicate a "1". If they were not equal, the I/O would indicate a "0". Note that in test mode „read“ I/O1-I/O3 are always driven to „ones“, i.e. all outputs will be „1“s for a test mode „pass“. The WCBR cycle ( $\overline{WE}$ ,  $\overline{CAS}$  before  $\overline{RAS}$ ) puts the device into test mode. To exit from test mode, a " $\overline{CAS}$  before  $\overline{RAS}$  refresh", " $\overline{RAS}$  only refresh" or "Hidden refresh" can be used.

Addresses A10R, A10C and A0C are don't care during test mode.

### Package Outlines



### Sorts of Packing

Package outlines for tubes, trays etc. are contained in our Data Book "Package Information".

SMD = Surface Mounted Device

Dimensions in mm