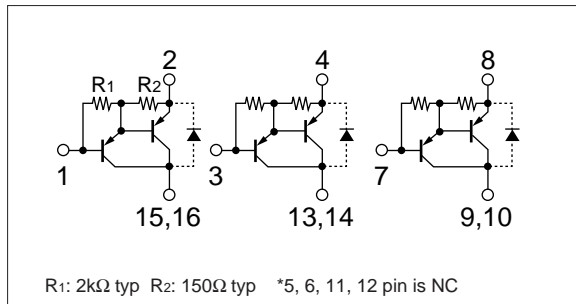


Absolute maximum ratings

(Ta=25°C)

Symbol	Ratings	Unit
V _{CB0}	-60	V
V _{CEO}	-60	V
V _{EBO}	-6	V
I _c	-4	A
I _{cP}	-6 (PW≤1ms, Du≤50%)	A
I _B	-0.5	A
P _T	2.6 (Ta=25°C)	W
T _j	150	°C
T _{stg}	-40 to +150	°C

Equivalent circuit diagram



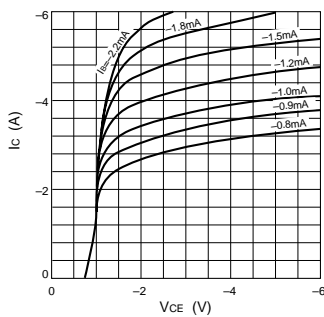
Electrical characteristics

(Ta=25°C)

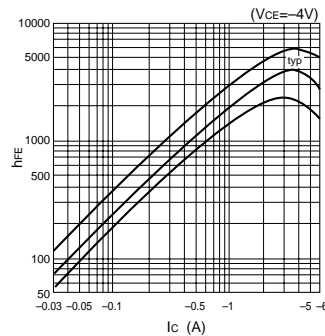
Symbol	Specification			Unit	Conditions
	min	typ	max		
I _{CB0}			-10	μA	V _{CB} =-60V
I _{EBO}			-10	mA	V _{EB} =-6V
V _{CEO}	-60			V	I _c =-10mA
h _{FE}	2000		12000		V _{CE} =-4V, I _c =-3A
V _{CE(sat)}			-1.5	V	I _c =-3A, I _B =-6mA
V _{BE(sat)}			-2.0	V	
V _{FEC}			1.8	V	I _{FEC} =1A
t _{on}		0.4		μs	V _{CC} ÷-30V, I _c =-3A,
t _{stg}		0.8		μs	I _B =-I _{B2} =-10mA
t _f		0.6		μs	
f _T		200		MHz	V _{CE} =-12V, I _E =0.2A
C _{ob}		75		pF	V _{CB} =-10V, f=1MHz

Characteristic curves

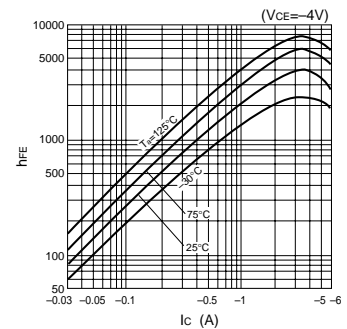
I_c-V_{CE} Characteristics (Typical)



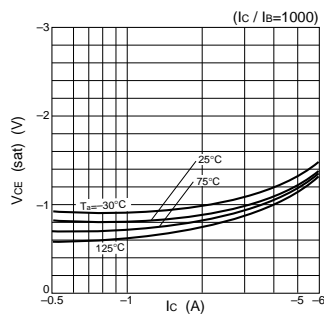
h_{FE}-I_c Characteristics (Typical)



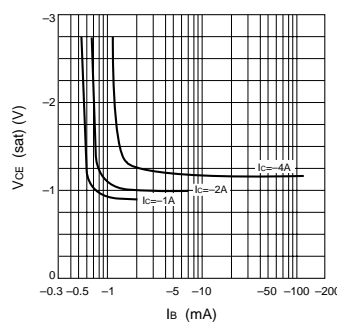
h_{FE}-I_c Temperature Characteristics (Typical)



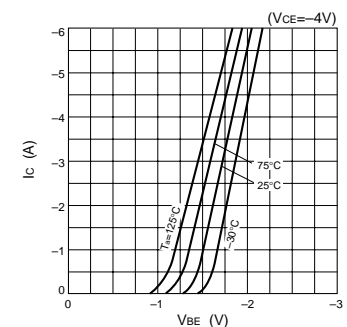
V_{CE(sat)}-I_c Temperature Characteristics (Typical)



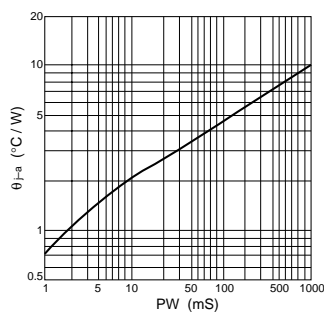
V_{CE(sat)}-I_B Characteristics (Typical)



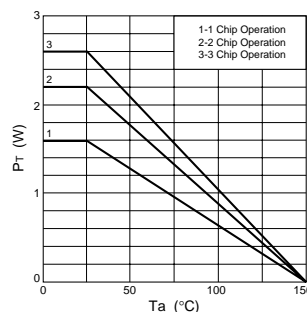
I_c-V_{BE} Temperature Characteristics (Typical)



θ_{J-a}-PW Characteristics



P_T-T_a Characteristics



Safe Operating Area (SOA)

