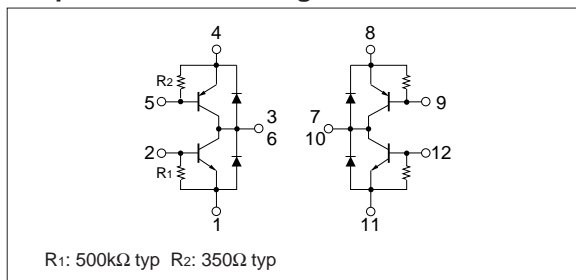


Absolute maximum ratings

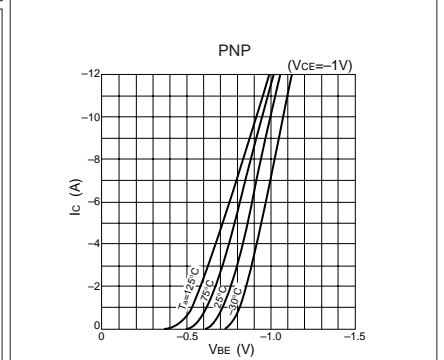
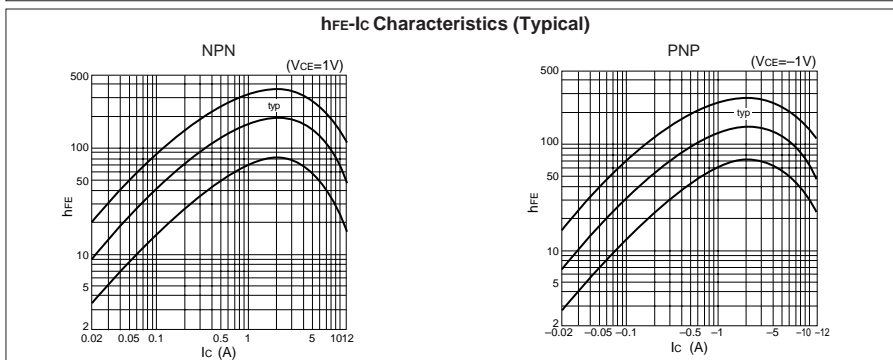
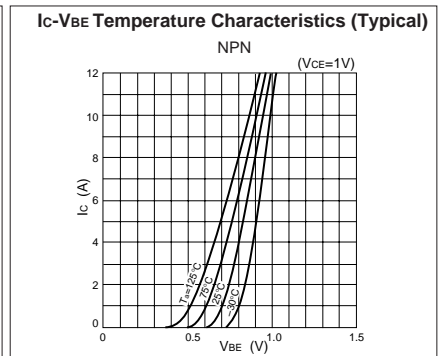
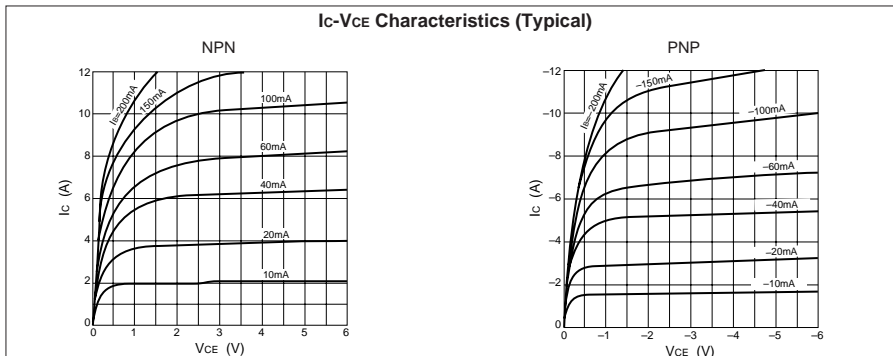
($T_a=25^\circ\text{C}$)

Symbol	Ratings		Unit
	NPN	PNP	
V_{CBO}	60	-60	V
V_{CEO}	60	-60	V
V_{EBO}	6	-6	V
I_C	12	-12	A
I_B	3	-3	A
P_T	5 ($T_a=25^\circ\text{C}$)		W
	40 ($T_c=25^\circ\text{C}$)		
V_{ISO}	1000 (Between fin and lead pin, AC)		V_{rms}
T_j	150		$^\circ\text{C}$
T_{stg}	-40 to +150		$^\circ\text{C}$
θ_{j-c}	3.12		$^\circ\text{C/W}$

Equivalent circuit diagram



Characteristic curves



Electrical characteristics

($T_a=25^\circ\text{C}$)

Symbol	NPN					PNP				
	Specification			Unit	Conditions	Specification			Unit	Conditions
	min	typ	max			min	typ	max		
I_{CBO}			100	μA	$V_{CB}=60\text{V}$			-100	μA	$V_{CB}=-60\text{V}$
I_{EBO}			60	mA	$V_{EB}=6\text{V}$			-60	mA	$V_{EB}=-6\text{V}$
V_{CEO}	60			V	$I_C=25\text{mA}$	-60			V	$I_C=-25\text{mA}$
h_{FE}	50				$V_{CE}=1\text{V}, I_C=6\text{A}$	50				$V_{CE}=-1\text{V}, I_C=-6\text{A}$
$V_{CE(sat)}$			0.35	V	$I_C=6\text{A}, I_B=0.3\text{A}$			-0.35	V	$I_C=-6\text{A}, I_B=-0.3\text{A}$
V_{FEC}			2.5	V	$I_{FEC}=10\text{A}$			2.5	V	$I_{FEC}=10\text{A}$

Characteristic curves

