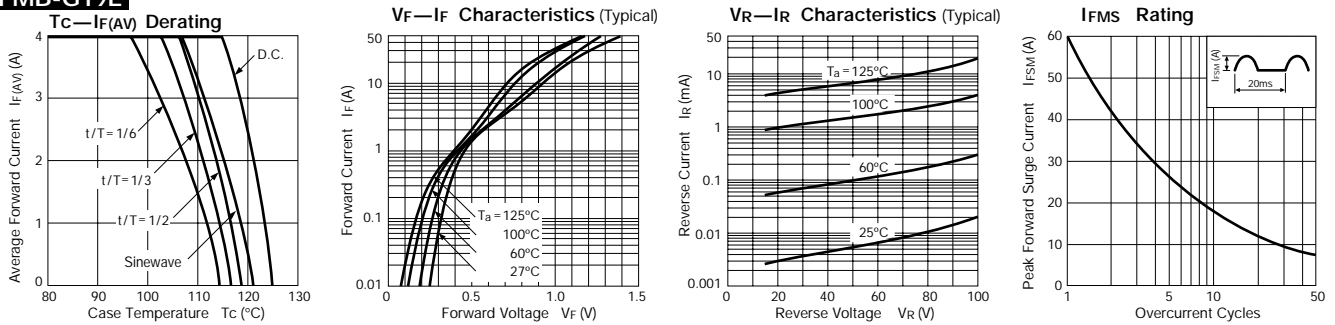


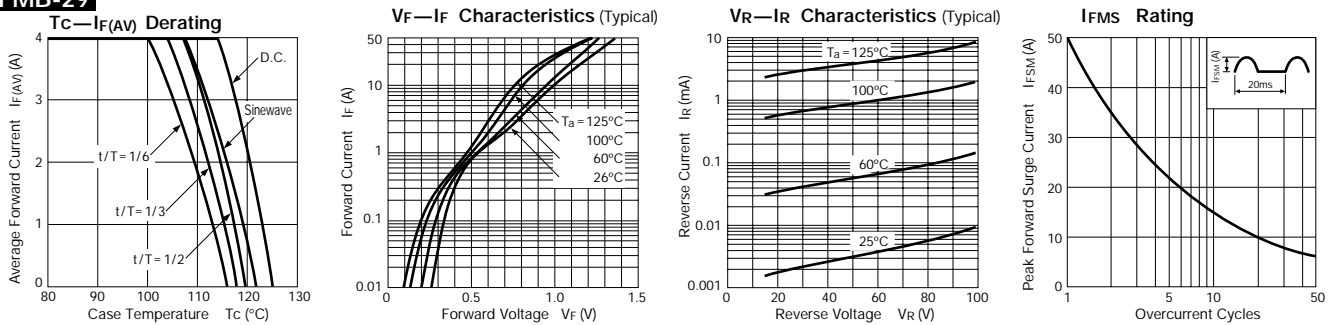
Schottky Barrier Diodes 90V

Parameter Type No.	Absolute Maximum Ratings					Electrical Characteristics (Ta=25°C)					Others					
	V _{RM} (V)	I _{F(AV)} (A)	I _{FSM} (A) 50Hz Half-cycle Sinewave Single Shot	T _j (°C)	T _{stg} (°C)	V _F (V) max per element	I _R (mA) V _R =V _{RM} max per element	I _{R(H)} (mA) V _R =V _{RM} , Ta=100°C max per element	t _{rr} (ns) I _F /I _{RP} (mA)	R _{th(j-c)} (°C/W)	Mass (g)	Remarks	Fig.			
FMB-G19L	90	4.0	60	-40 to +150	0.81	4.0	5.0	35	100	100/100	4.0	2.1	1 Chip	Ⓐ		
FMB-29			50										2.0	3.0	15	Center-tap
FMB-29L		8.0	4.0										5.0	35		
FMB-39		15.0	7.5										10.0	50		
FMB-39M		20.0	150										10.0	15.0	60	2.0

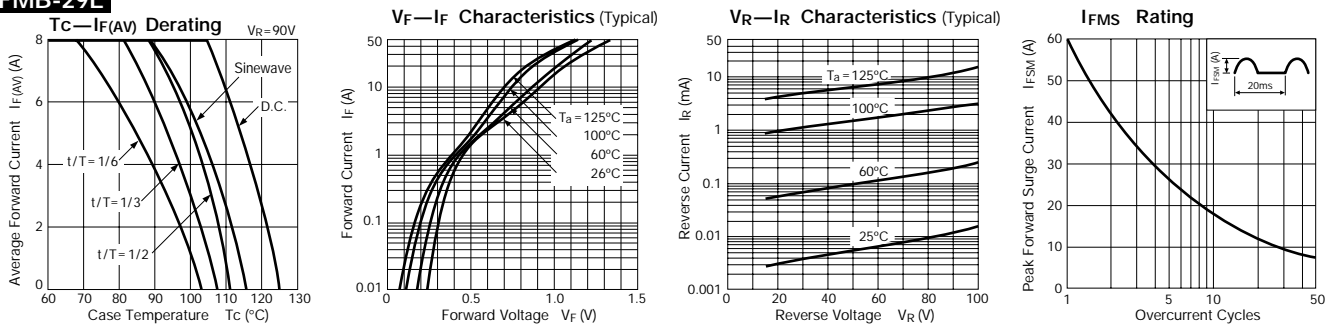
FMB-G19L



FMB-29



FMB-29L



External Dimensions

(Unit: mm) (Full-mold)

Flammability:
UL94V-0 or Equivalent

Fig. Ⓐ

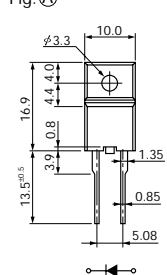


Fig. Ⓑ

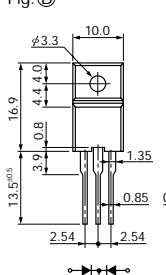
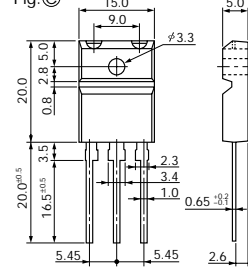
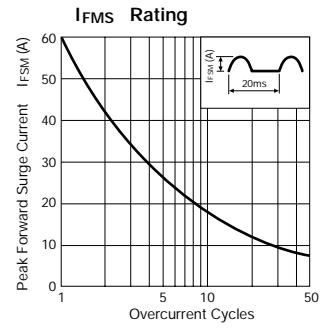
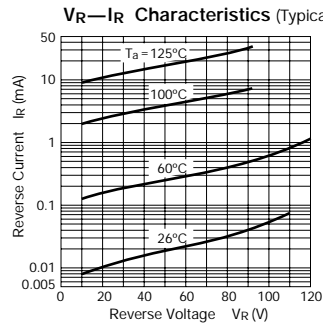
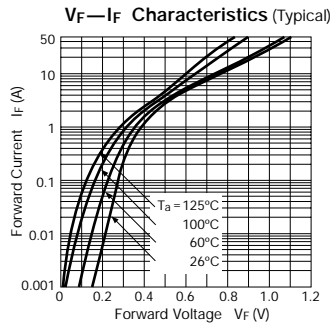
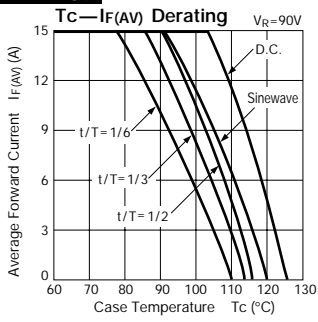


Fig. Ⓒ



FMB-39



FMB-39M

