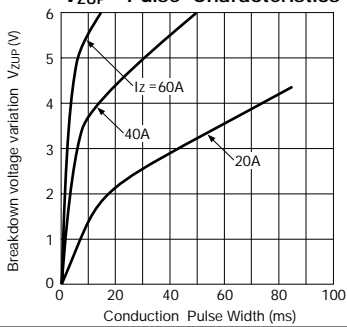


Power Zener Diodes

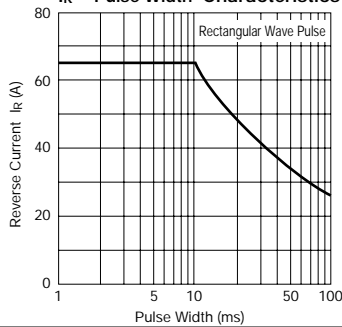
Parameter Type No.	Absolute Maximum Ratings					Electrical Characteristics (Ta = 25°C)							Others		
	PR (W) P.W.=5ms	VDC (V)	IzSM (A) Rectangular wave 10ms single shot	Tj (°C)	Tstg (°C)	Vz (V) Iz = 1mA Instantaneous	IR (mA) VR = VDC max	IR (H) (mA) VR = VDC Ta = 150°C max	Temperature dependence of breakdown voltage V/C	Rz (Ω) Iz = 1.0A to 10A typ.	VF (V) max IF (A)	Mass (g)	Remarks	Fig.	
PZ 628	1500	20	65	-40 to +150		28±3	0.5	1.0	0.02	0.03	0.95	5.0	2.6		Ⓐ
SFPZ-68	50		2.0				0.01	1.0	0.02	0.03	0.95	1.0	0.072	Surface Mount	Ⓑ
SPZ-G36	450	30	11.0			36±3.6	0.005	0.1	0.03	0.24	0.98	3.0	0.29	Power Surface Mount	Ⓒ

PZ 628

VzUP—Pulse Characteristics



IR—Pulse Width Characteristics

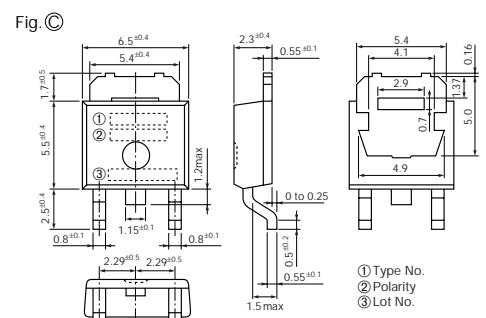
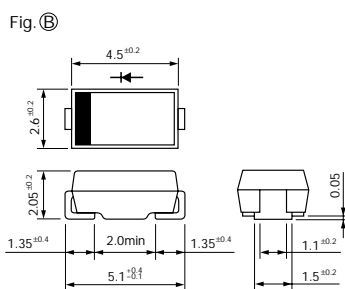
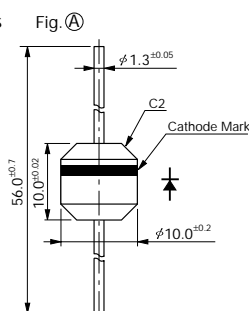


SFPZ-68

SPZ-G36

External Dimensions (Unit: mm)

Flammability:
UL94V-0 or Equivalent



① Type No.
② Polarity
③ Lot No.