

SANKEN LINEAR REGULATOR HYBRID IC

Type : STR-D3000

1. Scope:

The present specifications shall only apply to Sanken Linear Regulator Hybrid IC, STR-D3000.

2. General:

2.1 Category: Hybrid IC

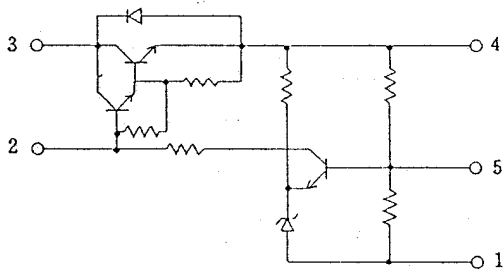
2.2 Construction: Hybrid IC based on the Silicon 3-layer Planar Transistor. Drive Circuit and Reference Voltage Circuit are built in.

2.3 Application: For off-line TV power supply.

2.4 Output voltage is fixed.

2.5 Full mode (isolated) package.

3. Equivalent Circuit



- 1. Common (-)
- 2. Base
- 3. Input
- 4. Output
- 5. Blank (Output Cont : STR-D3010 only)

4. Appearance and Outline Drawings:

4.1 Appearance

The body shall be clean and shall not bear any stain, rust or flaw.

4.2 Outline Drawings

Refer to Page 7.

5. Marking

The type number and lot number shall be legitimately be marked by laser printing. Refer to Page 7.

SANKEN ELECTRIC COMPANY, LTD.

6. Ratings

6.1 Maximum Rating ( $T_a=25^\circ\text{C}$ )

Description	Symbol	Rating	Unit	Conditions
Peak Input Voltage	$V_{IN}$	200	V	
Output Current	$I_o$	1.0	A	
Power Dissipation	$P_D$	20	W	
Operating Temperature	$T_{OP}$	-20~+125	$^\circ\text{C}$	※1
Storage Temperature	$T_{STG}$	-30~+125	$^\circ\text{C}$	
Junction Temperature of the Power Transistor	$T_j$	150	$^\circ\text{C}$	

※1: Recommended Temperature  $T_{OP}(T_c)=100^\circ\text{C}$  ( $T_c$  denotes the temperature of inner frame)

6.2 Electrical Characteristics ( $T_a = 25^\circ\text{C}$ )

Description		Symbol	Rating	Unit	Condition
Set Output Voltage	Measured Circuit#1		Refer to P.3	V	※2
	Measured Circuit#2				
Output Voltage Variation 1 (vs. Input Voltage) Measured Circuit #1			Refer to P.3	V	
Output Voltage Variation 2 (vs. Input Voltage) Measured Circuit #1			Refer to P.3	V	
Temperature Coefficient of Output Voltage			Refer to P.3		
Saturation Voltage between Input and Output		$V_{CE(SAT)}$	1.5 MAX.	V	$I_C = 1A, I_B = 10mA$
DC Current Gain		$h_{FE}$	1500~6500		$I_C = 1A, V_{CE} = 4V$
Cut-off Current between Input and Output		$I_{CEO}$	100 MAX.	$\mu A$	$V_{CE} = 200V$
Thermal Resistance of Power Transistor		$\theta_{J-C}$	1.8	$^\circ\text{C/W}$	Between Junction and the internal of frame
Emitter-Base Current		$I_{EB(S/B)}$	300 MAX.	mA	$t = 65 \text{ ms}$

※2: The set output voltage denotes the voltage appears after power is turned on and paused for 5 seconds. When there is any question on the output voltage, it can be determined by the measured circuit #2.

Date: Oct. 1, 1990

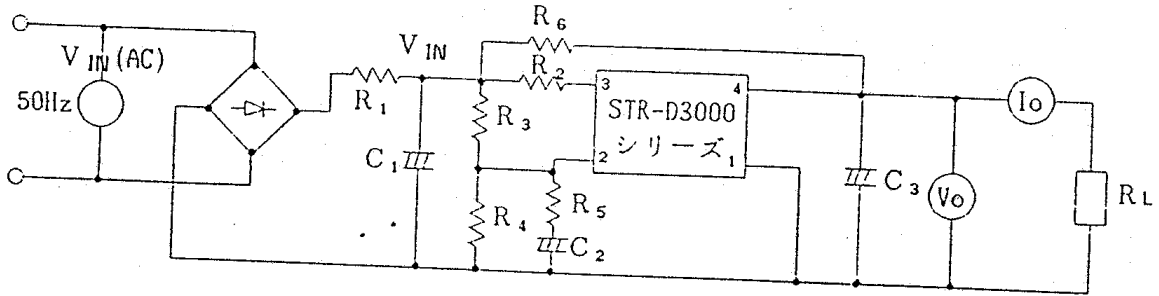
Specification No.: SSE-16436E

2/7

7. Electrical Characteristic

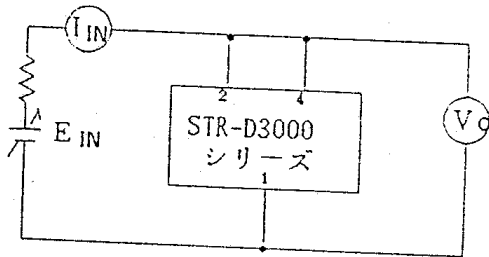
Description	Part Number	STR-D3010	STR-D3012	STR-D3013	STR-D3015	STR-D3020	STR-D3023	STR-D3025	STR-D3030	STR-D3034	STR-D3035
Ratings		110±0.8V	112±0.8V	113±0.8V	115±0.8V	120±0.8V	123±0.8V	125±0.8V	130±0.8V	134±0.8V	135±0.8V
Measured Circuit #2		I <sub>IN</sub> = 5.9 mA					I <sub>IN</sub> = 7.2 mA			I <sub>IN</sub> = 6.9 mA	
Measured Circuit #1		V <sub>IN</sub> = 134 V(DC), I <sub>o</sub> = 0.5 A									
Ratings		Δ 2.4 V									
Measured Circuit #1		V <sub>IN</sub> = 125 ~ 150 V(DC)					V <sub>IN</sub> = 145 ~ 170 V(DC)			V <sub>IN</sub> = 150 ~ 175 V(DC)	
		I <sub>o</sub> = 0.5 A					I <sub>o</sub> = 0.5 A			I <sub>o</sub> = 0.5 A	
Ratings		Δ 0.5 V									
Measured Circuit #1		V <sub>IN</sub> = 134 V(DC)					V <sub>IN</sub> = 161 V(DC)				
		I <sub>o</sub> = 0.25 ~ 0.5 A					I <sub>o</sub> = 0.25 ~ 0.5 A				
Ratings		± 0 mV/°C typ									
Measured Circuit #1		V <sub>IN</sub> = 134 V(DC), I <sub>o</sub> = 0.5 A					V <sub>IN</sub> = 161 V(DC), I <sub>o</sub> = 0.5 A				
		I <sub>o</sub> = -20 ~ 100 °C					T <sub>c</sub> = -20 ~ 100 °C				
Circuit Constant of measured circuit #1		R <sub>3</sub> = 10 KΩ R <sub>4</sub> = 220 KΩ					R <sub>3</sub> = 12 KΩ R <sub>4</sub> = 220 KΩ			R <sub>3</sub> = 12 KΩ R <sub>4</sub> = 330 KΩ	

Measured Circuit #1



$R_1: 1.0 \Omega$ ,  $R_2: 2.2 \Omega$ ,  $R_3: K\Omega$ ,  $R_4: K\Omega$ ,  $R_5: 47 \Omega$ ,  $R_6: 220 \Omega$   
 $C_1: 470 \mu F$ ,  $C_2: 33 \mu F$ ,  $C_3: 33 \mu F$

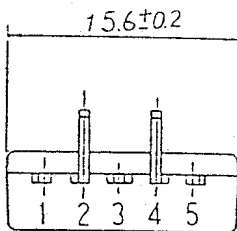
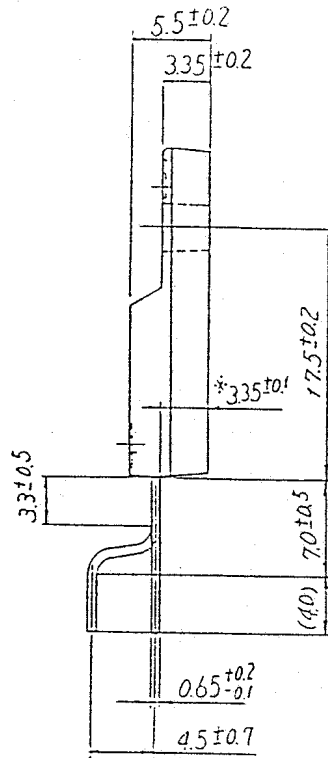
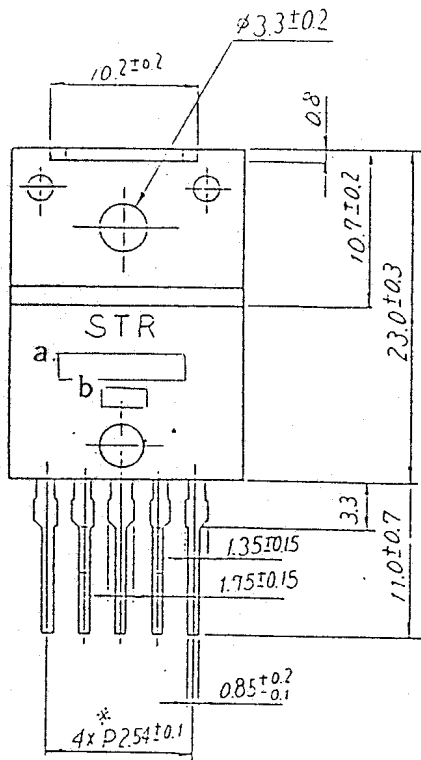
Measured Circuit #2



SSE-16436

4/7

SANKEN ELECTRIC COMPANY, LTD.



1. Common (-)
2. Base
3. Input
4. Output
5. Blank (Output Cont...STR-D3010 only)

a. Part Number : D3000 series

b. Lot display :

1st. digit : Last number of ~~the~~ year

2nd. digit : Month

1~9 : Jan.~Sept.

0 : October

N : November

D : December

3rd. and

4th digits : Date 01~31 in a month

Unit : mm